

Farming for Info: Agrologists coming to a field near you

Agrologists will be touring the Cariboo region this summer to collect information on crops, irrigation, livestock, and land-use for farming areas in the region. The crew will navigate public roads and observe land from within the vehicle, often with binoculars.

Watch for a blue F150 pickup with BC Ministry of Agriculture magnetic signs on both door panels:

- Quesnel, Electoral Area B , Wells, Electoral Area C from July 16 to July 26
- Electoral Area E, F, G, H from July 29 to August 30

Agriculture is an important sector in the Cariboo and for it to succeed, water must be available. To help ensure the long term viability of both the natural resource and the industry, the Ministry of Agriculture and the Partnership for Water Sustainability in BC are working together to complete an Agricultural Land Use Inventory and Water Demand Model for the region.

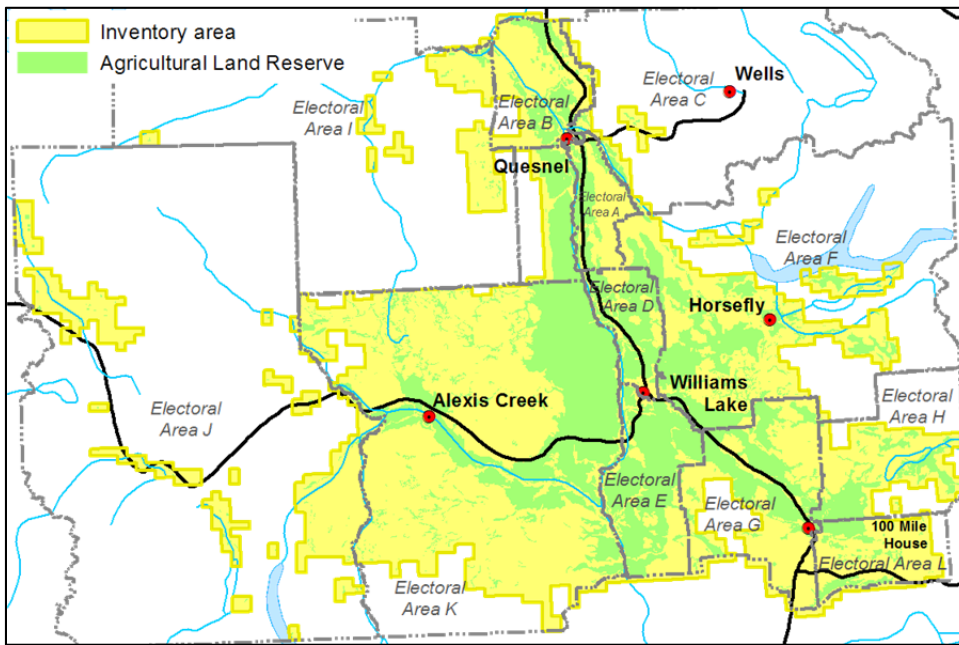
The Agricultural Land Use Inventory will:

- Define the amount of actively farmed land in the region;
- Provide a benchmark for monitoring land use change;
- Identify land use trends for areas with historic ALUIs; and
- Assist land use planning including official community plans & Crown land use planning.

The Agricultural Water Demand Model will:

- Enable examination of water management alternatives that consider future land use changes;
- Define potential impacts of climate change and identify appropriate adaptation strategies; and
- Inform future water storage modelling projects.

This is a multiyear project that started in 2018 and is expected to be completed in 2020. Funding is provided by the BC Ministry of Agriculture and Agriculture and Agri-Food Canada through the Canadian Agricultural Partnership, a five year (2018-19 to 2022-23), \$3 billion investment by federal provincial and territorial governments to strengthen the agriculture, agri-food and agri-based products sector, ensuring continued innovation, growth and prosperity.



For further information, contact:

Corrine Roesler
ALUI Lead
BC Ministry of Agriculture
Abbotsford
604.556.3110
Corrine.Roesler@gov.bc.ca

Or

AgriService BC
Ministry of Agriculture
1.888.221.7141
AgriServiceBC@gov.bc.ca