

## ***Farming for Info: Agrologists coming to a field near you***

---

Agrologists will be touring the Capital region this summer to collect information on crops, irrigation, livestock, and land-use for farming areas in the region. The data will be used to estimate agricultural water demand for current and predicted future climate scenarios.

Agriculture is an important sector in the region and for it to succeed, water must be available. To help ensure the long term viability of both the natural resource and the industry, the Capital Regional District, the Ministry of Agriculture, and the Partnership for Water Sustainability in BC are working together to complete an Agricultural Land Use Inventory and Water Demand Model.

This summer, agrologists will navigate public roads and observe the land from within the vehicle to confirm information gathered from aerial photography.

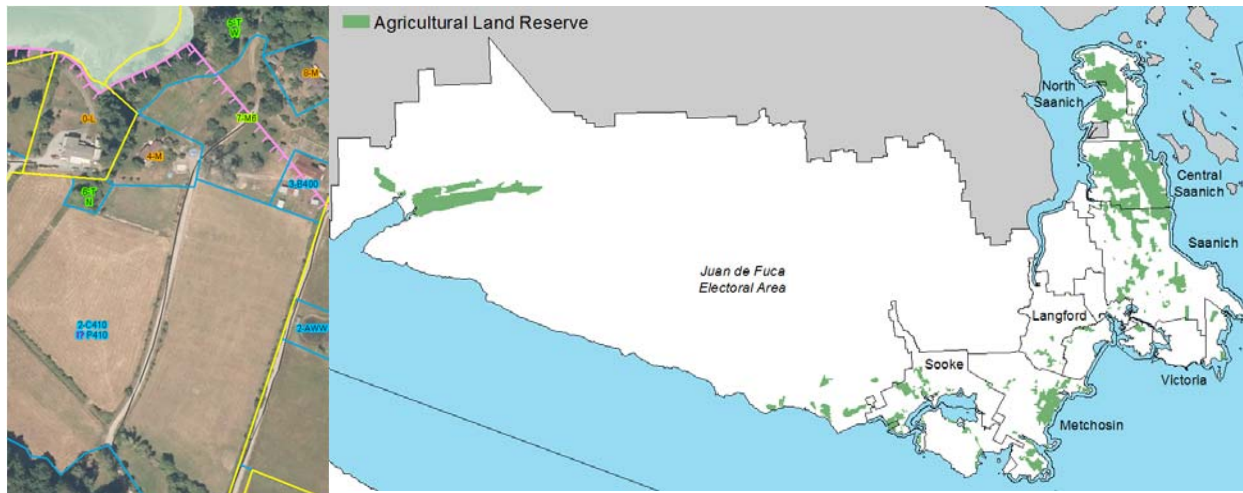
Watch for a light gray Jeep Compass with Ministry of Agriculture signs on both door panels in farming areas between July 30 and August 31 2018.

Once complete the Agricultural Land Use Inventory will:

- Define the amount of actively farmed land in the region as of 2018;
- Provide a benchmark for monitoring land use change;
- Identify land use trends for areas with historic ALUIs; and
- Assist land use planning including official community plans & Crown land use planning.

The Agricultural Water Demand Model will:

- Enable examination of water management alternatives that consider future land use changes;
- Define potential impacts of climate change and identify appropriate adaptation strategies; and
- Inform future water storage modelling projects.



For more information, please contact:

Jeff Weightman, Capital Regional District, Phone: 250 360 3162, [jweightman@crd.bc.ca](mailto:jweightman@crd.bc.ca)

Corrine Roesler, BC Ministry of Agriculture, Phone: 604 556 3110, [Corrine.Roesler@gov.bc.ca](mailto:Corrine.Roesler@gov.bc.ca)