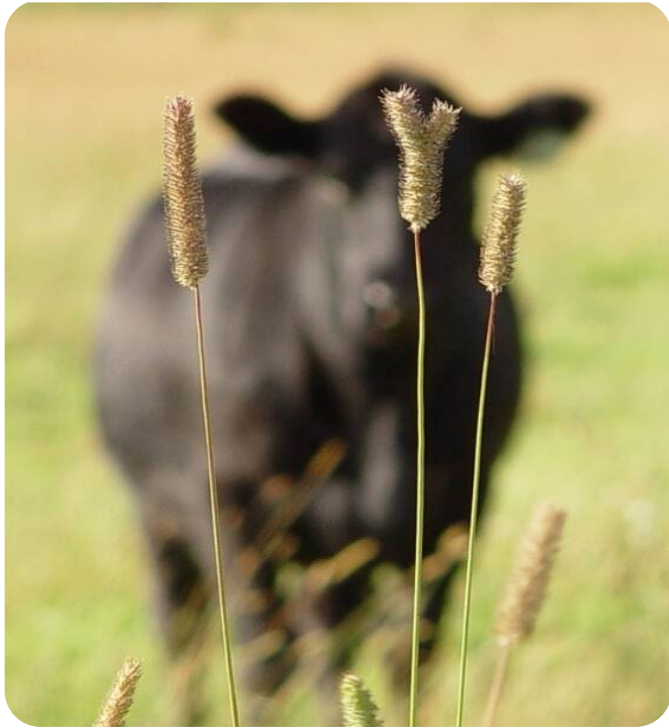


The B.C. Grazing Management Guide



Purpose of the guide:

The primary purpose of the Grazing Management Guide is to assist producers and provide guidance for professionals in developing a Grazing Management Plan. Every effort has been made to ensure the accuracy and completeness of these materials but, these materials should not be considered the final word on areas of practice that are covered. One should seek the advice of appropriate professionals and experts as the facts of any situation may differ from those set out in the materials. All information in this publication and related materials are provided entirely “as is” and no representations, warranties or conditions, either expressed or implied, are made in connection with your use of, or reliance upon, this information. This information is provided to you as the user entirely at your risk.

Acknowledgements:

The updated content was contracted to the BC Forage Council and authored by:

- Greg Tegart, PAg.
- Jim Forbes, PAg.
- Serena Black, PAg.

Original content (May 2005) was edited and compiled by:

- Darren Bruhjell, P.Ag, CPRM

Original content (May 2005) was published by:

- BC Agriculture Council

Edited, reviewed, and compiled by the B.C. Ministry of Agriculture and Food.

Content review was provided by several Ministry of Agriculture and Food staff, Industry Subject Matter Experts, and Ministry of Forests staff.



The following materials and factsheets have been updated as of March 2026:

Grazing Management Guide – Foundation information for grazing management.

Factsheet #4 – Components of a Grazing Management Plan. Discusses and describes what elements or topics should comprise a grazing plan and offers some tools to assist in that process.

Factsheet # 5 – Pasture Design. Discusses and describes aspects to consider when designing a grazing management plan or system, (includes stocking rate calculation). Offers some examples, both conceptual and actual, of grazing systems and approaches including a checklist.

Factsheet #6 – Riparian Pasture Design. Discusses and describes aspects to consider and steps to take in designing a grazing plan for riparian areas. Offers some examples, both conceptual and actual, of grazing systems and approaches.

Factsheet # 7 – Cost-benefit Analysis of Various Grazing Systems. Discusses, and provides analytical guidance and tools with regards to evaluating the costs, benefits and returns associated with investing in rotational grazing practices.

Factsheet # 8 – Grazing Frequency and Utilization. Provides further insights into the FIO Principles and timing of grazing as well as some plant species leaf or stubble height guidance to use in conjunction with FIO to quickly monitor grazing impacts and the effectiveness of the rest periods.

Factsheet # 9 –Different Livestock Species – Grazing Considerations. Outlines the general characteristics and of livestock species as it pertains to grazing management as well as a Animal Unit chart. Species included are: sheep, goats, hogs/pigs, poultry, and horses.

Factsheet # 10 –Multi-Species Livestock Grazing. Looks at the basics of multi-species grazing from a pasture and livestock performance perspective. Compliments factsheet # 9.

Factsheet #11 – Monitoring Grazing Lands. Discusses monitoring in general, photo-point use and methodology, stubble height rules of thumb, relative use levels, forage production and browse species utilization and trend. Sheets to print for in-field monitoring.

Factsheet # 12 – Monitoring Strategies for Extensive and Intensive Grazing Systems. Provides information on various monitoring tools and approaches. Including the Grazing Response Index, Pasture Walks (with silvopasture and cutblock section), soil moisture, record keeping, and a link to the Grassland Monitoring Manual for British Columbia.

Factsheet # 13 – Pasture Renovation and Management. Outlines considerations and options associated with forage pasture renovation, species selection and management linked to operational objectives, forage productivity, soil and pasture health and carbon considerations.

The following materials and factsheets have had minor revisions, but most material as is of publishing date May 2005:

Factsheet #1 – Pasture and Range Assessment. This factsheet describes how to assess pasture and range sites by walking you through the process, offering examples to assist and scoring the results.

Factsheet #2 – Addressing Pasture and Range Assessment Concerns. Provides guidance and insights into what aspects could benefit from adjustments to current management practices, ideas on options and where to seek additional information.

Factsheet #3 – Improving Livestock Distribution. Discusses tools and strategies that can improve livestock distribution and patterns of use on pasture and range areas.

Factsheet #14 – Seasonal Considerations for Grazing Management. Discusses grazing management and use aspects and consideration points in relation to the seasons of the year.

Factsheet # 15 – Managing Grazing Lands During Drought. Discusses some options for herd