

# Specialized Homes and Support Services



## What is SHSS?

- ▶ **SHSS is a new approach to providing services and staffed care to children and youth**, and their families within the province's network of care.
- ▶ SHSS **plays a crucial role within the network of care**, not only safeguarding the well-being of vulnerable children and youth but also providing preventive services and early intervention support to keep families strong and together.
- ▶ **SHSS has four service types: Specialized Long-Term Care, Low-Barrier Short-Term Stabilization Care, Emergency Care and Respite Care.**
- ▶ These service types are designed to help keep families together, help strengthen placement stability, and provide healing opportunities for children and youth.

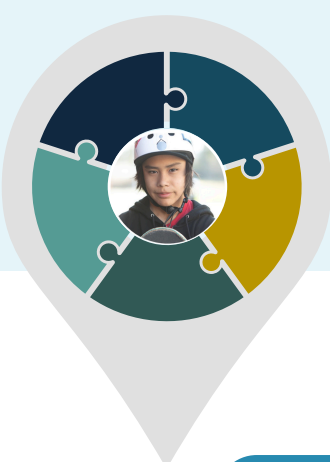
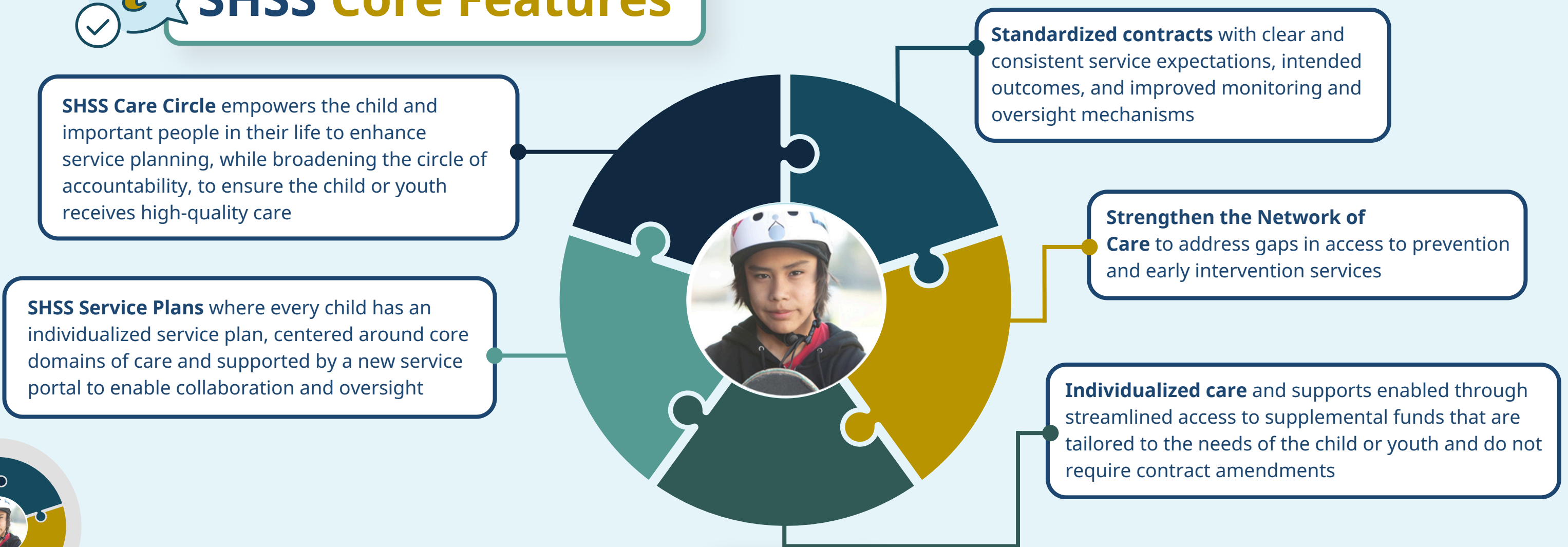


## Why the change?

- 1 To ensure children and youth have a voice in their care and to promote successful outcomes for them.
- 2 To create safety and provisions for early intervention.
- 3 To create contracts with service providers that are consistent, modernized and clear.
- 4 To move towards specialized homes that are the best fit for each child.

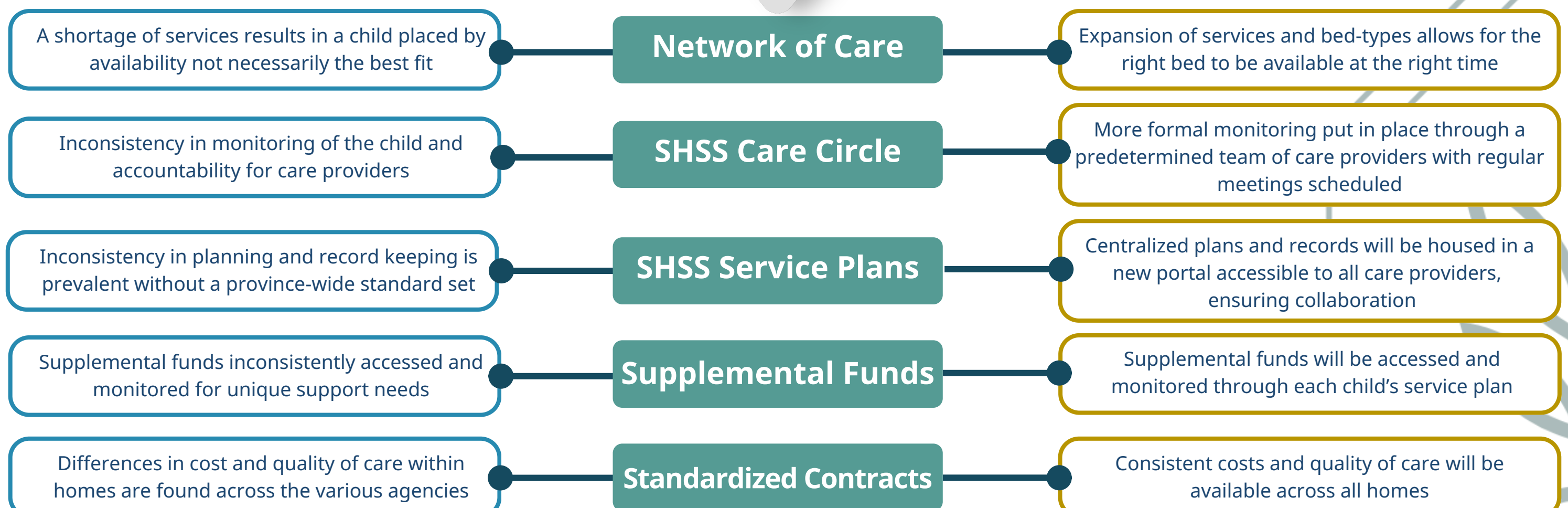


## SHSS Core Features



## BEFORE SHSS

## SHSS IMPLEMENTED



For more information, reach out to the SHSS Implementation Team at [MCF.SHSSImplementation@gov.bc.ca](mailto:MCF.SHSSImplementation@gov.bc.ca)