

Taking Responsibility for your Beverage Container Products

Understanding your Responsibilities as a Producer



Ministry of
Environment
and Parks



Why is this important?

The Recycling Regulation requires producers who supply beverage container products in B.C. to take responsibility for the life cycle of their products, including end-of-life collection and recycling.

1 What makes me a producer?

You are a producer of beverage container products if you sell, offer for sale or distribute ready-to-drink beverages in sealed containers that end up in collection depots or return to retail stores in B.C. Even if beverage containers aren't your main product, they are part of your obligations because they hold the beverages you sell.

Beverage container products include:

Aluminum cans

Glass bottles

Plastic containers

Stand up pouches

Drinking boxes

Bag in a box

Bimetal cans

Gable top containers



*See [Recycling Regulation](#) for a full list of product materials.

2 What do I need to know?

Producers include **manufacturers, distributors, importers and retailers** of ready-to-drink beverages in sealed containers.

Additionally, if the beverage is made outside B.C., a producer can be the manufacturer's agent who represents the maker to the Liquor Distribution Branch.

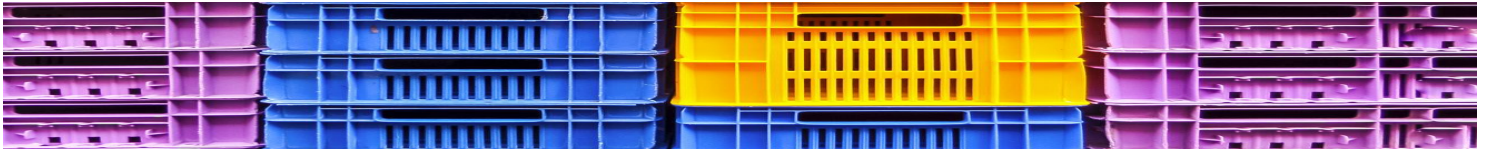


3 What do I need to do?

Contact an approved Extended Producer Responsibility **agency overseeing beverage container products** to manage your business's recycling obligations or submit your own plan.

Joining an agency can help you fulfill your responsibilities under the Recycling Regulation.

Approved EPR Agency List can be found by product type on the [BC Government EPR website](#).



What is Extended Producer Responsibility (EPR)?

EPR is one of the key pillars of B.C.'s circular economy, driving sustainable waste management through the continuous conservation and reuse of products as raw materials. British Columbia stands as a leader in North America, with over 15 EPR programs that mandate producers to take full responsibility for the entire life cycle of their products, including collection and recycling.

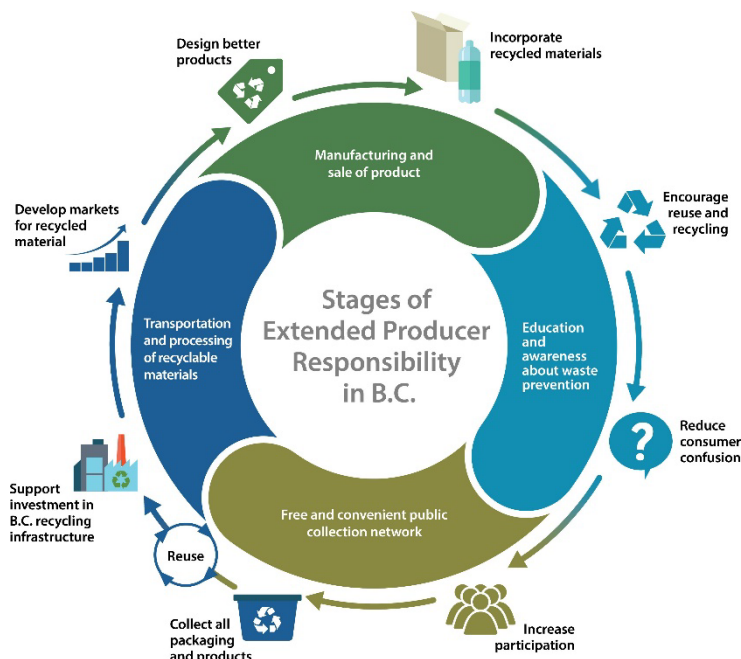
Why is EPR important?

Over 2.5 million tonnes of solid waste from B.C. homes and businesses end up in landfills or are incinerated each year. This is over 500 kg of waste disposed per person.

We're doing something to curb the waste. Through the EPR framework, we're able to improve province-wide recycling and expand collection programs making recycling easier and more accessible for British Columbians.

Benefits of adopting the EPR Framework:

- ✓ EPR provides businesses like yours the tools to take ownership of the products you sell, helping you participate in the circular economy.
- ✓ EPR promotes the design of more reusable and recyclable products and redirects them away from landfills.



That's why in B.C., we're shifting towards the circular economy, working with industry, businesses, and other levels of government to realize the environmental and economic benefits of this move to a circular system, preventing waste from being produced in the first place.

For questions contact:

**ExtendedProducerResponsibility
[@gov.bc.ca](mailto:ExtendedProducerResponsibility@gov.bc.ca)**