



LARRATT
AQUATIC

Okanagan Lake Collaborative Monitoring Agreement 2021 Summary Report

Prepared for BC Ministry of Environment and Climate Change Strategy,
Environmental Protection Division

Executive Summary

The British Columbia Ministry of Environment and Climate Change Strategy (BC ENV) in partnership with local municipalities, commissioned a multi-year collaborative monitoring program to sample water quality in Okanagan Lake. Sampling occurred monthly from March to September at four locations from 2011 to 2021. A primary function of the monitoring was to determine attainment of Okanagan Lake water quality objectives, along with increasing the temporal resolution of water quality data for Okanagan Lake, specifically with the goal of determining trends in nutrient and biological data. Similar to previous years, parameters such as temperature and dissolved oxygen were measured throughout the water column as well as several chemical parameters including silica, nitrogen, and phosphorus at discrete depths. Biological data including phytoplankton and zooplankton biomass with taxonomic identification were also collected. This report summarizes the 2021 findings and sets these recent data within the context of this program (2011-2021) and the entire historical dataset (1973-2021).

The results to date indicate that the Armstrong Arm is the most impacted by human activities and watershed degradation. These impacts include including agriculture, cattle range, logging, septic systems adjacent to the shoreline, and now the White Rock Lake wildfire. This site had the most exceedances and the most parameters trending towards greater exceedances. Weather was the dominant factor on water quality at Okanagan Centre, Kelowna, and Summerland but long-term data still demonstrates human impacts.

Physical

Okanagan Lake is usually stratified from May to November, it mixes in mid-November and then freely mixes over the winter. Secchi depth was highest in late winter and decreased each spring in response to increased phytoplankton activity. Water clarity was typical for Okanagan Lake in 2021. Only the Armstrong Arm failed to meet the Secchi depth objective in 2021, as it did in every year to date.

Chemical

Dissolved oxygen (DO) is essential for all aquatic animals and is high throughout Okanagan Lake at all times except in the hypolimnion of the Armstrong Arm where DO fell below the water quality objective each summer including 2021. Silica, an important micronutrient, had stable concentrations in Okanagan Lake over the past 20 years.

Total nitrogen (TN) exceeded the objective at all sites during 2021 as it did in most years. There were significant increasing trends in TN from 2011-2021 at Okanagan Centre and Armstrong Arm, driven in part by a decades-long increasing trend in nitrate in the deep water of Okanagan Lake. This increasing nitrate trend has continued through multiple wet-dry climate cycles and is likely caused by increasing human impacts within the Okanagan region and possibly also climate change.

Total phosphorus (TP) had a year-over-year increasing trend at all sites from 2011-2021, and forms part of a longer-term trend since the mid-2000s. TP includes phosphorus associated

with suspended sediment carried into the lake. It increased in Okanagan Lake during wet years such as 2017-2018 and decreased during dry years such as 2019 and 2021. Dissolved phosphorus is less affected by freshets than TP and was stable over the past 20 years at all sites, averaging much lower than the 1970s.

The ratio of total nitrogen to total phosphorus (N:P) available to phytoplankton will play a major role in which types of phytoplankton proliferate in a lake. A lower N:P ratio (abundant phosphorus relative to nitrogen) will favour the growth of cyanobacteria. The N:P ratio failed to meet the objective in the Armstrong Arm in 2021 with a downwards trend (farther from meeting objective).

Biological

Chlorophyll-a was used as a measure of photosynthetic activity in Okanagan Lake. A decreasing north to south trend in the chlorophyll-a data occurred over the course of this study. All sites met the chlorophyll-a objectives during 2021. Chlorophyll-a was lower during 2019-2021 compared to the very high 2018 values because of the drier conditions and lower freshet nutrient inputs after 2018. However, a significant increasing trend occurred at all sites from 2011-2020, part of a trend since the mid-2000s.

Phytoplankton abundance during 2021 was elevated compared to 2020. All sites met the phytoplankton biovolume objective but failed to meet the phytoplankton taxonomy objective during 2021 because of elevated cyanobacteria densities, particularly the Armstrong Arm.

Zooplankton biomass met the objective at Kelowna and Summerland in 2021 and was high compared to previous years. All sites failed to meet the objective of >5% cladocerans in some samples during 2021. No significant trends in zooplankton data occurred to date.

The following areas of concern have been identified that may require further investigation on the part of the Ministry:

- Chronically low Secchi depth in the Armstrong Arm
- Increasing nitrate in hypolimnion of Okanagan Lake since 1970s
- Increasing total phosphorus at all sites except Summerland since early 2000s
- Increasing chlorophyll-a throughout the lake since early 2000s
- Decreasing N:P ratio in the Armstrong Arm
- High densities of potentially toxic cyanobacteria in Armstrong Arm during 2018-2021
- Role of Climate Change in water quality changes in Okanagan Lake

Water Quality Objectives, 2011-2020 Values, and Trends for Okanagan Lake

Table 1: Okanagan Lake water quality objectives

Parameter (Nordin, 2005)	Summerland	Kelowna	Ok Centre	Armstrong Arm
Secchi Depth (growing season average: Apr-Sep)	>7m	>6m	>6m	>5m
Dissolved Oxygen (minimum in bottom waters)	-	-	-	>5 mg/L
TP (mg/L as P) (maximum at spring overturn)	<0.007	<0.008	<0.008	<0.01
Chlorophyll-a (µg/L) (maximum seasonal average)	<4.5	<4.5	<4	<5
TN (mg/L as N) (maximum at spring overturn)	<0.230	<0.230	<0.230	<0.250
N:P Ratio (spring weighted ratio)	>25:1	>25:1	>25:1	>25:1
Algae Taxonomy (% heterocystous cyanobacteria)	<5%	<5%	<5%	<5%
Algae Biomass (µL/L) (growing season average)	<0.75	<0.75	<0.75	<0.75
Zooplankton Biomass (µg/L) (growing season average)	>50	>50	>50	>50
Zooplankton Taxonomy (% cladocerans)	>5%	>5%	>5%	>5%

Table 2: Attainment of Okanagan Lake water quality objectives compared to growing season averages during 2011-2020

Objective	Summerland	Kelowna	Ok Centre	Armstrong Arm
Secchi Depth	6.4	6.1	6	3.6
Dissolved Oxygen	10.45	10.88	10.79	0.55
TP (mg/L) 0:10m:	0.005	0.005	0.005	0.010
20-45m:	0.004	0.005	0.006	0.026
Chlorophyll-a (µg/L)	2.7	3.11	2.94	3.63
TN (mg/L) 0-10m:	0.209	0.218	0.224	0.264
20-45m:	0.235	0.247	0.244	0.271
N:P Ratio 0-10m:	47:1	45:1	44:1	28:1
20-45m:	55:1	48:1	43:1	15:1
Algae Taxonomy (% heterocystous cyanobacteria)	2.3%	4.0%	4.5%	8.1%
Algae Biovolume (µL/L)	0.86	0.694	0.532	1.760
Zooplankton Biomass (µg/L)	95.8	274.8	270	489.9
Zooplankton Taxonomy (% cladocerans)	7.5%	4.0%	2.4%	4.4%

Legend:

Achieve objective in >70% of samples	Achieve objective in >25% and <70% of samples	Achieve objective in <25% of samples	No Data/ No Objective
--------------------------------------	---	--------------------------------------	-----------------------

Table 3: Summary of trends compared to attainment of water quality objectives in Okanagan Lake during 2011-2020

Objective	Summerland	Kelowna	Ok Centre	Armstrong Arm
Secchi Depth	-	-	-	-
Dissolved Oxygen	-	-	-	-
TP (mg/L) 0:10m:	↑	↑	↑	↑
Chlorophyll-a (µg/L)	-	↑	↑	↑
TN (mg/L) 0-10m:	-	-	↑	↑
N:P Ratio 0-10m:	↓	-	↓	↓
Algae Taxonomy (% heterocystous cyanobacteria)	-	-	-	-
Algae Biovolume (µL/L)	↑	↑	-	-
Zooplankton Biomass (µg/L)	-	-	-	-
Zooplankton Taxonomy (% cladocerans)	-	-	-	↑

Legend:

Achieve objective in >70% of samples	Achieve objective in >25% and <70% of samples	Achieve objective in <25% of samples	No Data/ No Objective
--------------------------------------	---	--------------------------------------	-----------------------

↑ = Increasing Trend

↓ = Decreasing Trend

- = No Trend

Preferred Citation

Self, J. and H. Larratt, 2022. Okanagan Collaborative 2021 Summary Report. Prepared by Larratt Aquatic Consulting Ltd. Prepared for British Columbia Ministry of Environment and Climate Change Strategy.

Report prepared by: Larratt Aquatic Consulting Ltd.

Jamie Self: BSc, RPBio
Senior Aquatic Biologist



Heather Larratt: BSc, RPBio
Principal Aquatic Biologist



Copyright and Disclaimer: This document is for the sole use of British Columbia Ministry of Environment and Climate Change Strategy (ENV) and Larratt Aquatic Consulting Ltd. (LAC). This report contains information that shall not be reproduced in any manner without the written permission of ENV. In preparing this report, LAC exercised the level of care and skill normally exercised by science professionals, subject to the same time, financial and physical constraints applicable to the services. This report includes data gathered during the investigations and the authors' professional judgement considering those investigations at the time of report writing. No liability is incurred by LAC or ENV for accidental omissions or errors made in the preparation of this report, or for results obtained from use of this information by another party.

Table of Contents

Okanagan Collaborative 2021 Report	1
Executive Summary	2
Water Quality Objectives, 2011-2020 Values, and Trends for Okanagan Lake	4
Table of Contents	7
Table of Figures and Tables	8
Definitions	10
1.0 Introduction	11
1.1 Overview	11
1.2 Weather and Climate Conditions in 2021	13
2.0 Results & Discussion	15
2.1 Physical	15
2.1.1 Temperature	15
2.1.2 Water Clarity and Secchi Depth	16
2.2 Chemistry	19
2.2.1 Dissolved Oxygen	19
2.2.2 Silica	20
2.2.3 Nitrogen and Phosphorus	21
2.3 Biology	29
2.3.1 Phytoplankton	29
2.3.2 Zooplankton	34
3.0 Conclusions	1
4.0 Recommendations	5
5.0 References	6
6.0 Appendices	8
6.1 Appendix 1: 2011-2021 Sampling Data	8
6.2 Appendix 2: Statistics and Graphing Overview	9

Table of Figures and Tables

Figure 1: Okanagan Basin Watershed with four sampling locations identified and 2021 wildfires marked.....	12
Figure 2: Water level in Okanagan Lake at Kelowna from Jun 2016 – Dec 2021.....	13
Figure 3: Water level in Okanagan Lake during 2021 compared to 2020 and the 1943-2019 average.....	14
Figure 4: Temperature profiles for Okanagan Lake at Summerland (left) and Armstrong Arm (right), 2021	15
Figure 5: Temperature at Okanagan Lake sampling sites during 2021 compared to 2011-2020	16
Figure 6: Secchi depth at Okanagan Lake sampling sites during 2021 compared to 2011-2020	18
Figure 7: Annual average secchi depth in Okanagan Lake from 1973-2021.....	19
Figure 8: Dissolved oxygen profiles for Okanagan Lake at Summerland (left) and Armstrong Arm (right) during 2021	20
Figure 9: Annual average silica concentration in Okanagan Lake at each sampling site by year with trends highlighted, 1973-2021	21
Figure 10: Annual average total nitrogen in Okanagan Lake, 2011-2021.....	22
Figure 11: Annual average nitrite (NO ₂) + nitrate (NO ₃) in mg/L as N in the deep water of Okanagan Lake, 2011-2021	23
Figure 12: Nitrate + nitrite in Okanagan Lake at Armstrong Arm by month illustrating seasonal accumulation of nitrate in low oxygen hypolimnion, 2011-2021	23
Figure 13: Annual average total phosphorus in Okanagan Lake at the three major basin sampling sites by year from 2011-2021	25
Figure 14: Total phosphorus in the Armstrong Arm, 2011-2021.....	26
Figure 15: Annual average dissolved phosphorus in Okanagan Lake illustrating declining long-term trend at Okanagan Centre, Kelowna, and Summerland from 2011-2021	27
Figure 16: Annual average ortho-phosphate in the epilimnion of Okanagan Lake, 2011-2021	27
Figure 17: Nitrogen to phosphorus ratio at Okanagan Lake sampling sites 2011-2021.....	29
Figure 18: Annual chlorophyll-a concentration at the four Okanagan Lake sampling sites, 2011-2021	30
Figure 19: Phytoplankton Biovolume at Summerland and Kelowna, 2015-2021	31
Figure 20: Taxonomic breakdown of algae by major types during 2021	32
Figure 21: Total algae, cyanobacteria, and diatom counts in Okanagan Lake, 2011-2021	33
Figure 22: Percent of total algae counts that were heterocystous cyanobacteria, 2011-2021	34
Figure 23: Zooplankton Biomass at the Kelowna and Summerland sampling locations by year, 2015-2021	35
Table 1: Okanagan Lake water quality objectives.....	4
Table 2: Attainment of Okanagan Lake water quality objectives compared to growing season averages during 2011-2020.....	5
Table 3: Summary of trends compared to attainment of water quality objectives in Okanagan Lake during 2011-2020	5
Table 4: GPS coordinates of sampling sites	11

Table 5: Growing Season (Apr-Sep) Secchi depth in meters at Okanagan Lake sampling sites, 2021	17
Table 6: Silica concentration in mg/L at Okanagan Lake sampling sites, 2021	20
Table 7: Total nitrogen in mg/L as N concentration at Okanagan Lake sampling sites, 2021	22
Table 8: Total phosphorus (mg/L as P) at Okanagan Lake sampling sites during 2021	24
Table 9: Ratio of average TN to average TP during spring at Okanagan Lake sampling locations, 2011-2021	28
Table 10: Chlorophyll-a in µg/L at Okanagan Lake sampling sites, 2011-2021	30
Table 11: Phytoplankton biovolume in µL/L at Okanagan Lake sampling sites, 2021	31
Table 12: Average phytoplankton counts by major algae groups in cells/mL, 2021	32
Table 13: Percent of total algae counts that were heterocystous cyanobacteria from 2021	34
Table 14: Zooplankton biomass in µg/L at Okanagan Lake sampling sites, 2021	34
Table 15: Growing Season average percent cladocerans zooplankton, 2021.....	35
Table 16: Okanagan Lake Water Quality Objectives.....	3
Table 17: Attainment of Okanagan Lake water quality objectives compared to growing season averages during 2021	4
Table 18: Summary of trends (2011-2021) and the water quality objectives for Okanagan Lake collaborative sampling program during 2021.....	4

Definitions

The following terms are defined as they are used in this report.

Term	Definition
Algae bloom	A superabundant growth of algae that may result in surface scum depending on type of algae that is blooming
Anoxic	Devoid of oxygen
Bioavailable	Available for use by plants or animals
Chlorophyll-a	Primary photosynthetic pigment in algae; used as a measure of photosynthetic activity
Cyanobacteria	Bacteria-like algae having cyanochrome as the main photosynthetic pigment
Diatoms	Algae that have hard, silica-based "shells" frustules
Fall overturn	Surface waters cool and sink, until a fall storm mixes the water column
Eutrophic	Nutrient-rich, biologically productive water body
Hypoxic	Very low dissolved oxygen
Macronutrient	The major constituents of cells: nitrogen, phosphorus, carbon, sulphate, H
Micronutrient	Small amounts are required for growth; Si, Mn, Fe, Co, Zn, Cu, Mo etc.
Microflora	The sum of algae, bacteria, fungi, <i>Actinomyces</i> , etc., in water or biofilms
Monomictic	"One Mixing": describes lakes that are thermally stratified in summer and mixed in winter
Nutrient limitation	A nutrient will limit or control the potential growth of organisms e.g. P or N
Phytoplankton	Algae that float, drift or swim in water columns of reservoirs and lakes
Plankton	Those organisms that float or swim in water
Riparian	The interface between land and a stream or lake
Secchi depth	Depth where a 20 cm Secchi disk can be seen; measures water transparency
Thermocline	The lake zone of greatest change in water temperature with depth (> 1°C/m); it separates the surface water (epilimnion) from the cold hypolimnion below
Zooplankton	Minute animals that graze algae, bacteria and detritus in water bodies

Term	Definition
AFDM	Ash-free dry mass
Chl-a	Chlorophyll-a units µg/L
DO	Dissolved oxygen units mg/L
N	Nitrogen units mg/L as N
Ortho-P	Orthophosphate ≈ SRP monomeric inorganic phosphorus units mg/L as N
P	Phosphorus units mg/L as P
DIN	Dissolved inorganic nitrogen = ammonia + nitrate + nitrite units mg/L as N
TDN	Total dissolved nitrogen = ammonia + nitrate + nitrite + dissolved organic N units mg/L as N
TDP/DP	Total dissolved phosphorus units mg/L as P
TN	Total nitrogen: organic + dissolved units mg/L as N
TP	Total phosphorus: organic + dissolved units mg/L as P

Lake Classification by Trophic Status Indicators (Nordin, 1985)

Trophic Status	chlorophyll-a ug/L	Total P ug/L	Total N ug/L	Secchi disc m	Phytoplankton density (cells/mL)	Phytoplankton biomass (mg/m ³)
Oligotrophic	0 – 2	1 – 10	<100	> 6	<1000	0-500
Mesotrophic	2 – 5	10 – 20	100 – 500	3 – 6	1000-5000	500-2000
Eutrophic	>5	> 20	500-1000	< 3	>5000	>2000

Nutrient Balance Definitions for Microflora (Dissolved Inorganic N : Dissolved Inorganic P) (Nordin, 1985)

Phosphorus Limitation	Co-Limitation of N and P	Nitrogen Limitation
>15 : 1	<15 : 1 – 5 : 1	5 : 1 or less

1.0 Introduction

1.1 Overview

The British Columbia Ministry of Environment and Climate Change Strategy (ENV) in partnership with the City of Kelowna, the Regional District of Central Okanagan, and the District of Summerland began a seasonal sampling program of Okanagan Lake in 2011 to increase the temporal resolution of water quality data being gathered. This program was performed collaboratively between ENV staff, Okanagan Nation Alliance (ONA; 2011), and Larratt Aquatic Consulting (2012-2021). Okanagan Lake was sampled monthly from March to September from 2011-2021 at four key sites (Figure 1, Table 4).

Table 4: GPS coordinates of sampling sites

Site Name	EMS ID	Latitude	Longitude
Summerland	0500454	49.600550°	-119.628030°
Kelowna	0500236	49.861350°	-119.513420°
Ok Centre	0500730	50.089900°	-119.478270°
Armstrong Arm	0500239	50.315450°	-119.357180°

Note: EMS = Environmental Monitoring System and serves as ENV's database of water quality

Sampling focused on three broad subjects at each site: physical parameters, water chemistry, and biological activity.

Physical parameters including temperature profiles were taken at each site on each date to build a composite image of conditions in Okanagan Lake over time (Figure 4). Secchi depth, a measure of water clarity, was also recorded for each site.

In addition, dissolved oxygen profiles were taken and a range of parameters were chemically analyzed from samples taken in the epilimnion (1-5-10 m composite) and the hypolimnion (20-32-45 m composite). Chemistry focused on the major nutrients in their various forms. Chemistry results were analyzed by ALS Environmental throughout this study.

Biological sampling included generic parameters such as chlorophyll-a concentration and biomass, as well as detailed taxonomic classification of phytoplankton (algae) and zooplankton.

The 2021 data were added to the existing 2011 – 2020 database upon which all the analyses in this report were performed. Water quality objectives were based upon Nordin (2005) (Appendix 1).

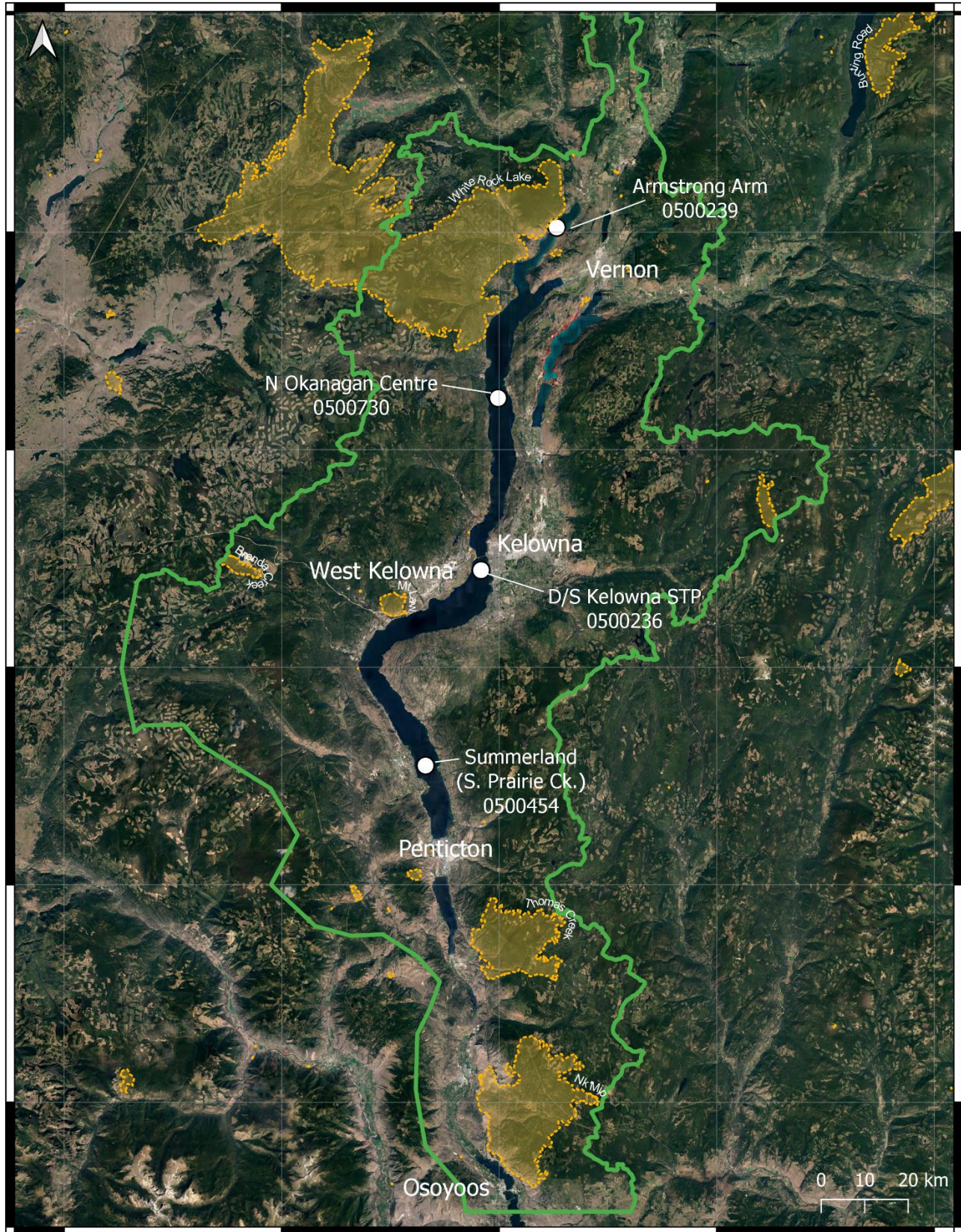


Figure 1: Okanagan Basin Watershed with four sampling locations identified and 2021 wildfires marked

1.2 Weather and Climate Conditions in 2021

The weather during any given year will have a major impact on physical conditions, water chemistry, and biological activity in Okanagan Lake during that and subsequent years. The weather during 2021 was extreme (Figure 2). Freshet was small and was quickly followed by a shift to hot dry weather. An intense heatwave dominated June and July leading to new record high temperatures for all of Canada¹. Kelowna recorded a temperature of 45.7 °C on June 29. Drought conditions intensified throughout the summer with the Okanagan region falling under Exceptional Drought status during August (Okanagan Basin Water Board, 2021). The drought conditions then led to a record setting wildfire season that saw 70,977 ha burn (9% of the total watershed, Figure 1). Of particular note was the White Rock Lake Fire that burned to the edge of Okanagan Lake and devastated several tributaries such as Naswhito Creek (82% burned) and Whiteman Creek (85% burned), both of which drain into the vulnerable Armstrong Arm. The water level of Okanagan Lake was near record low throughout the summer and fall of 2021 (Figure 3). This type of extreme weather is expected to become more frequent and more intense because of Climate Change.

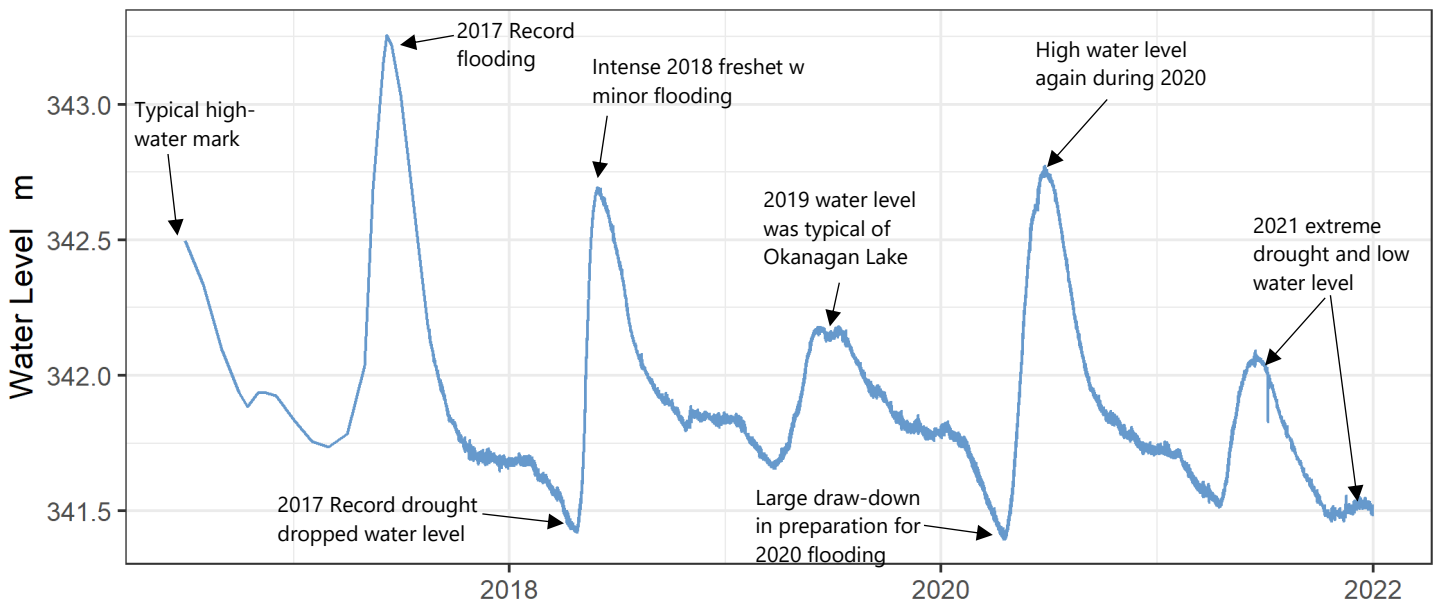


Figure 2: Water level in Okanagan Lake at Kelowna from Jun 2016 – Dec 2021

Source: (Water Office, 2020)

¹ Prior to this heatwave, the previous record high temperature for Canada was 45°C recorded in Yellow Grass, Sask on July 5, 1937 (Weather Network, 2021)

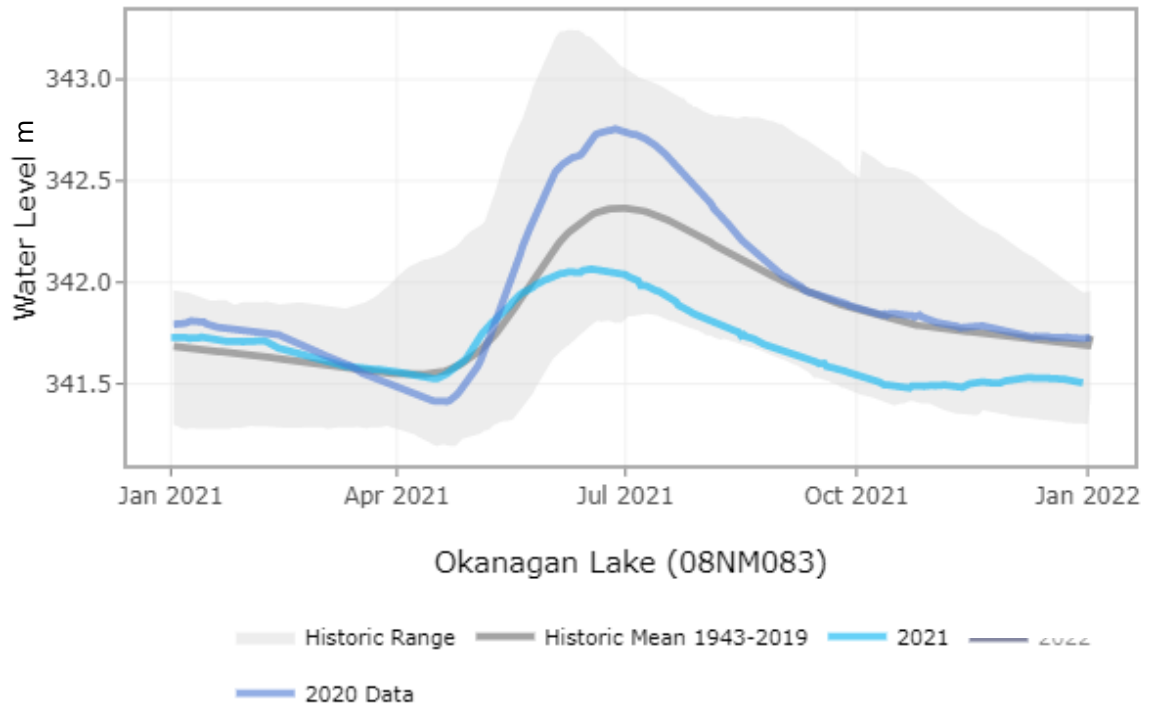


Figure 3: Water level in Okanagan Lake during 2021 compared to 2020 and the 1943-2019 average

2.0 Results & Discussion

2.1 Physical

2.1.1 Temperature

Okanagan Lake is a deep monomictic lake. From May to November each year, the surface water (epilimnion) is thermally isolated from the deep water (hypolimnion) by a thermocline. The sun warms the epilimnion to over 20 °C each summer while water below 20 m changes temperature by less than 4 °C annually (Figure 4).

The three main basin sites (Summerland, Kelowna, and OK Centre) exhibit similar thermal behavior while the northern Armstrong Arm site is shallower and reaches a higher surface temperature each summer (Figure 4). Thermal stratification in Okanagan Lake breaks down each November and the water column freely circulates through the winter. There were no statistically significant trends in the 2011–2021 temperature data either annually, seasonally (Mann-Kendall trend tests).

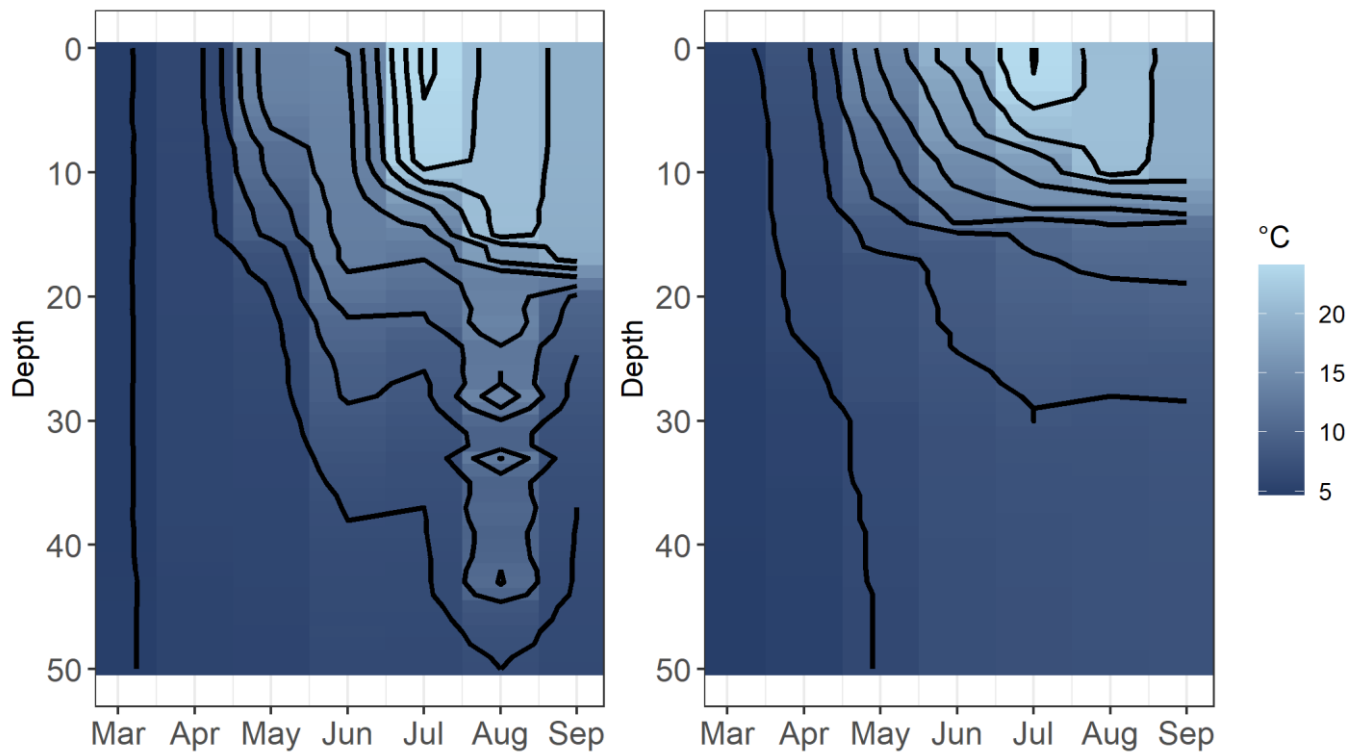


Figure 4: Temperature profiles for Okanagan Lake at Summerland (left) and Armstrong Arm (right), 2021

Notes: Lines represent contours of same temperature or dissolved oxygen within the water column through time. Samples not collected during March 2020 at Armstrong Arm because of ice-cover

Surface water temperatures of Okanagan Lake at all four sites were at or above average throughout most of 2021 because of the very hot summer weather (Figure 5).

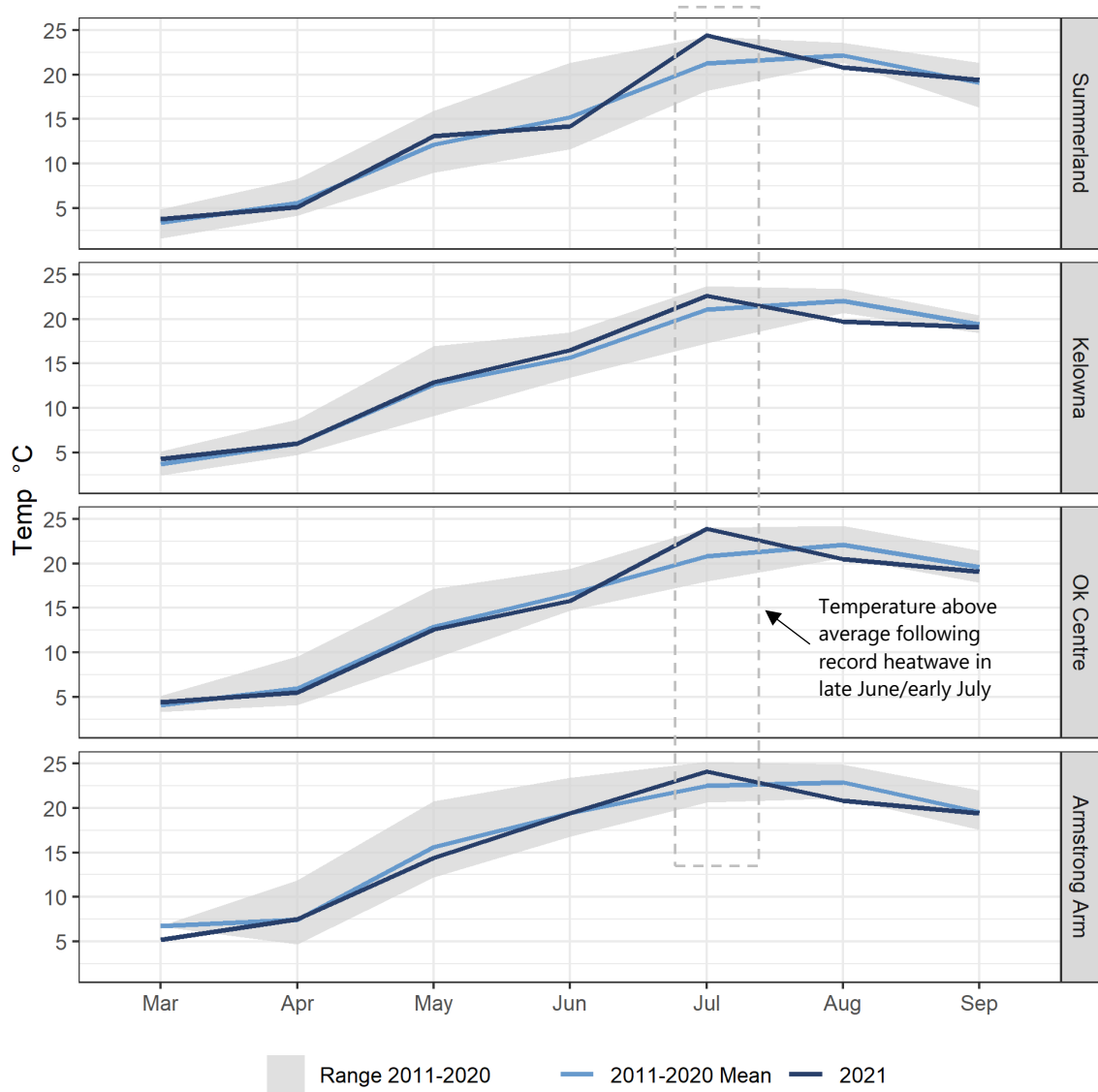


Figure 5: Temperature at Okanagan Lake sampling sites during 2021 compared to 2011-2020

2.1.2 Water Clarity and Secchi Depth

Water clarity, as measured by Secchi depth, ranged from a minimum of only 1.5 m at Armstrong Arm in May to a maximum of 14.3 m at Okanagan Centre in March during 2021 (Table 5). Secchi depth averages were near the 10-year average during 2021 (Figure 6, Figure 7). Armstrong Arm and Summerland failed to meet their respective objectives during 2021 (Table 5). The overall average for Okanagan Lake historically has been 6.5-6.6 m but averaged 5.5 ± 2.3 m in 2021 (Andrusak et al., 2006; Nordin, 2005). The relatively low water clarity during 2021 may relate to an increasing trend in chlorophyll-a observed throughout the lake during the past 10 years (Figure 18).

Secchi depth followed a consistent pattern each year. Maximum Secchi depths occurred in the late winter when biological activity was the lowest. During increased spring algal growth and freshet, the Secchi depth dropped dramatically to the lowest of the year at all sites. As nutrients were used up, algae concentrations diminished, and water clarity increased through the summer and into the fall (Figure 6).

The Secchi depth in the Armstrong Arm was much lower than at the other sites in Okanagan Lake during all years. This is clearly illustrated in Figure 7. Secchi depth was stable over the past 10 years and there were no statistically significant year-over-year trends in the Secchi depth data from 2011-2021 but there was a significant drop when the 1973-2021 historical data was considered (Mann-Kendall tests, Figure 7). This long-term trend is related to a period of high water clarity in the years following the installation of nutrient removal systems at wastewater treatment plants; the current lower water clarity likely relates to the cumulative effects of increased population and human activities within the Okanagan watershed over the past 30 years.

Table 5: Growing Season (Apr-Sep) Secchi depth in meters at Okanagan Lake sampling sites, 2021

Site	Objective	Average	StdDev	Max	Min
Summerland	7.0	6.4	2.5	10.1	3.7
Kelowna	6.0	6.1	2.2	9.0	2.5
Ok Centre	6.0	6.0	2.3	8.9	3.2
Armstrong Arm	5.0	3.6	1.2	5.0	1.5

Note: Objective refers to growing season average (Apr-Sep); Coloured shading indicates status of objective during that year with green meaning met objective and red meaning failed to meet objective

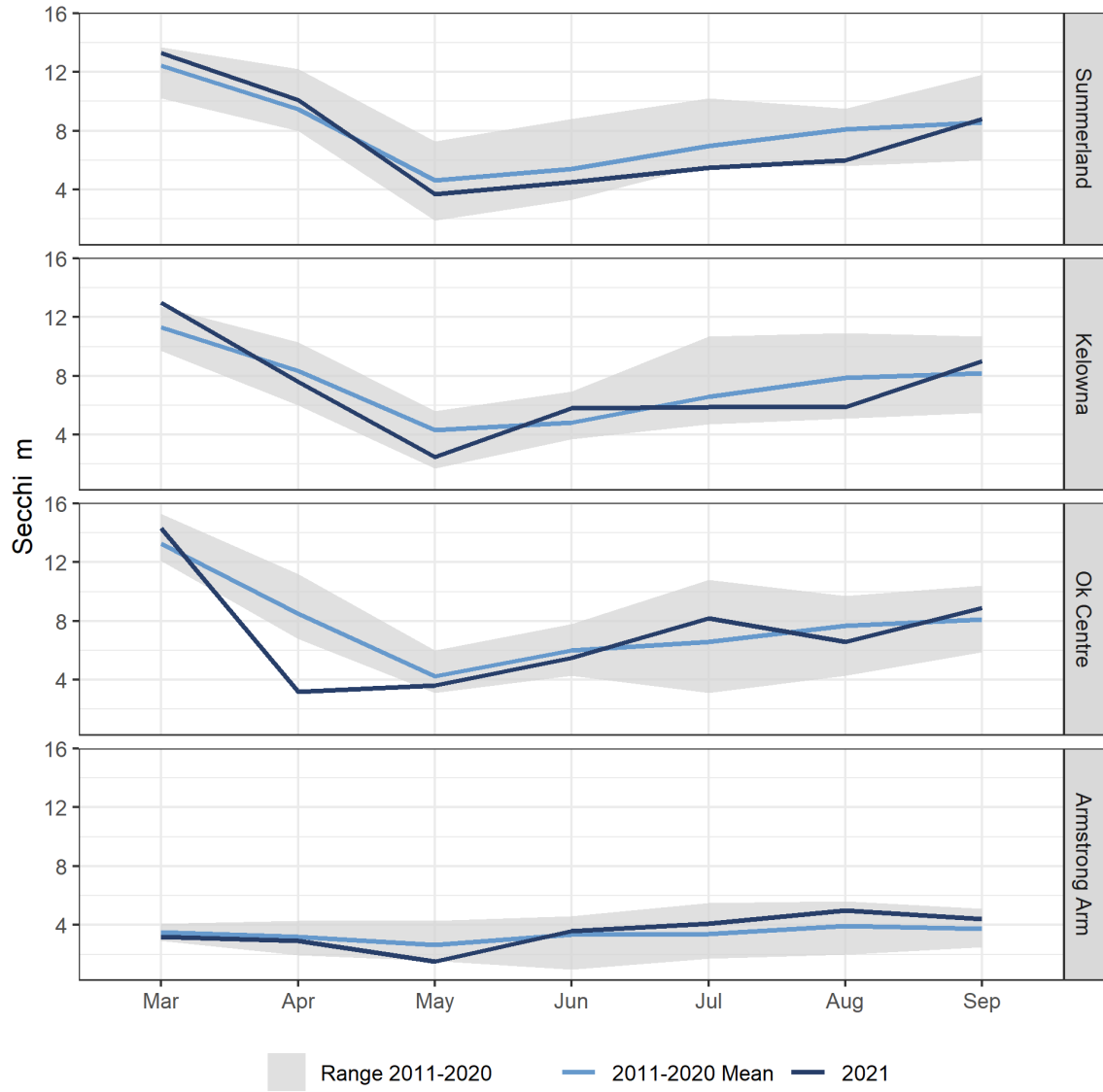


Figure 6: Secchi depth at Okanagan Lake sampling sites during 2021 compared to 2011-2020

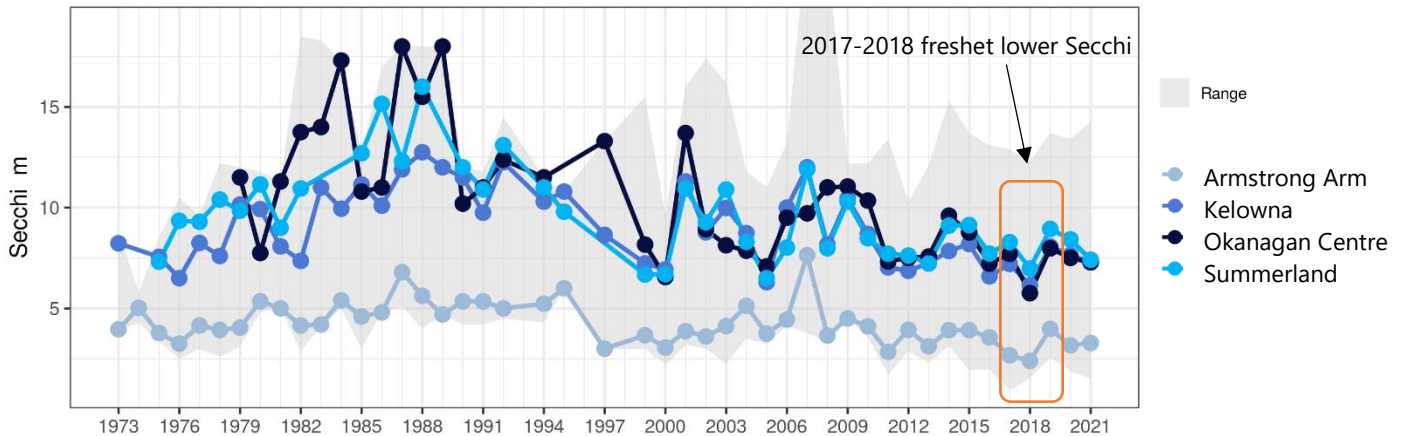


Figure 7: Annual average secchi depth in Okanagan Lake from 1973-2021

2.2 Chemistry

Chemistry sampling focused on dissolved oxygen, nitrogen and phosphorus (the most important aquatic nutrients), and silica, a key micronutrient. Increasing nutrient trends frequently result from human activities such as wastewater effluent disposal, riparian degradation, agriculture, fertilizer use, storm water, etc. These human-caused impacts are gradual and are easiest to detect as year-over-year trends. As the database grows, it will become easier to separate climatic impacts from human impacts.

2.2.1 Dissolved Oxygen

Dissolved oxygen (DO) is essential for all aquatic animals. Low DO will stress fish and possibly preclude them from certain portions of the water column. Hypoxic conditions occur when DO is very low (<2 mg/L) and this has a profound impact on water chemistry through the mobilization of nutrients and metals from the sediment. The three major basin sites (Summerland, Kelowna, and OK Centre) exhibit similar thermal and high dissolved oxygen behavior while the northern Armstrong Arm site is shallower and behaves differently. The later reaches a higher surface temperature and experiences a reduction in dissolved oxygen in the deep water each summer (Figure 8). The reduction in dissolved oxygen is caused by decomposition of organic material in the sediment and deep water and can lead to internal nutrient loading if oxygen becomes depleted. The Armstrong Arm is the only site with a dissolved oxygen objective (>5 mg/L in bottom water), a threshold that it fails to meet every year. By September 2021, the low dissolved oxygen zone (depth below red line in Figure 8) had expanded to 20 m thick with a minimum concentration of only 0.55 mg/L.

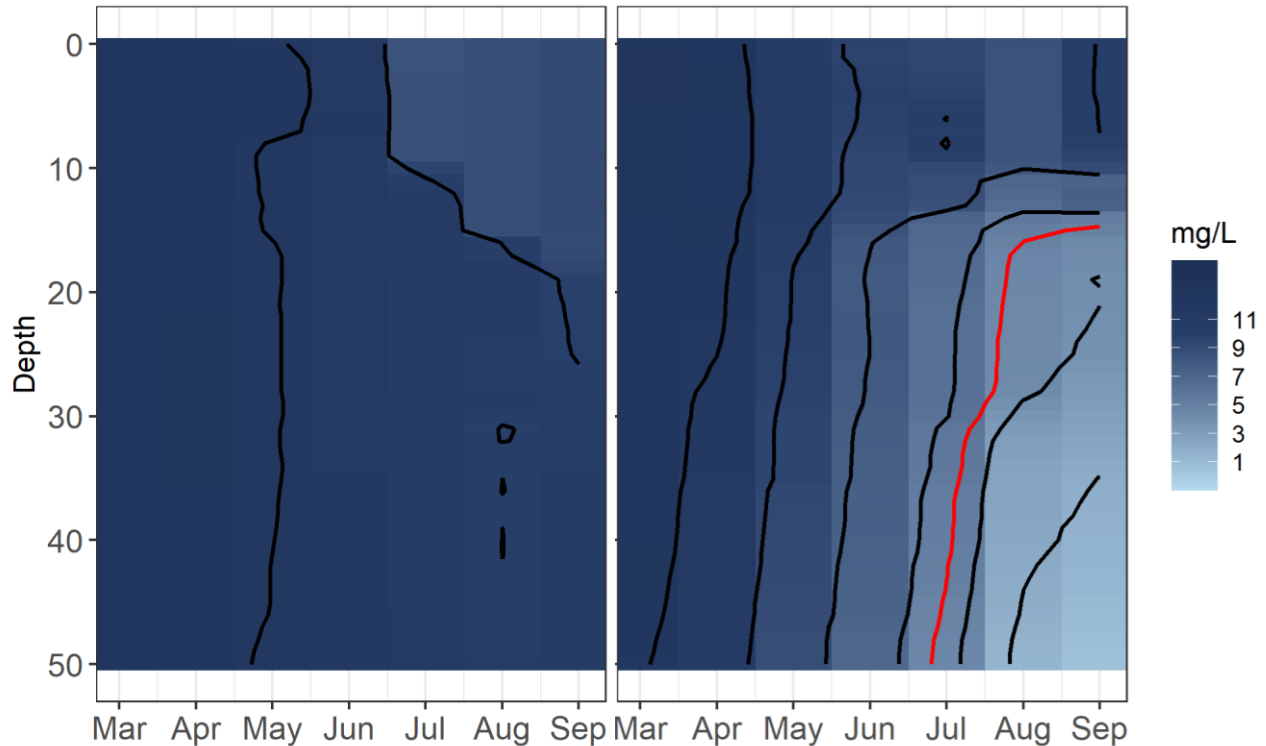


Figure 8: Dissolved oxygen profiles for Okanagan Lake at Summerland (left) and Armstrong Arm (right) during 2021

Dissolved oxygen profile illustrates high dissolved oxygen concentrations at Summerland and characteristic oxygen depletion in deep waters of the Armstrong Arm. Lines represent contours of same dissolved oxygen within the water column through time. Note: The red line on dissolved oxygen plot represents Water Quality Objective; all water below this line does not meet the objective.

2.2.2 Silica

Diatoms, a major group of algae in Okanagan Lake, use silica (measured as dissolved silica) as a structural building block for their cell walls. While no objectives for silica concentrations in Okanagan Lake have been set, monitoring continues as silica is a key micronutrient for this important group of algae. Silica sampling shifted to only March and September beginning in 2015 because it did not change significantly over the course of the growing season from 2011-2014. Silica was higher during 2017-2018, likely an effect of the flooding and intense freshets during those years, but when looking at the long-term data, there was an increasing trend from the 1970s to 2000 followed by a period of stability since 2000 (Table 6, Figure 9). The cause of the change in silica from increasing to stable is not known.

Table 6: Silica concentration in mg/L at Okanagan Lake sampling sites, 2021

Site	Average	StdDev	Max	Min
Armstrong Arm	7.51	1.14	10.40	6.26
Kelowna	7.25	0.44	7.92	6.39
Ok Centre	6.62	1.80	7.64	0.50
Summerland	7.23	0.46	7.93	6.46

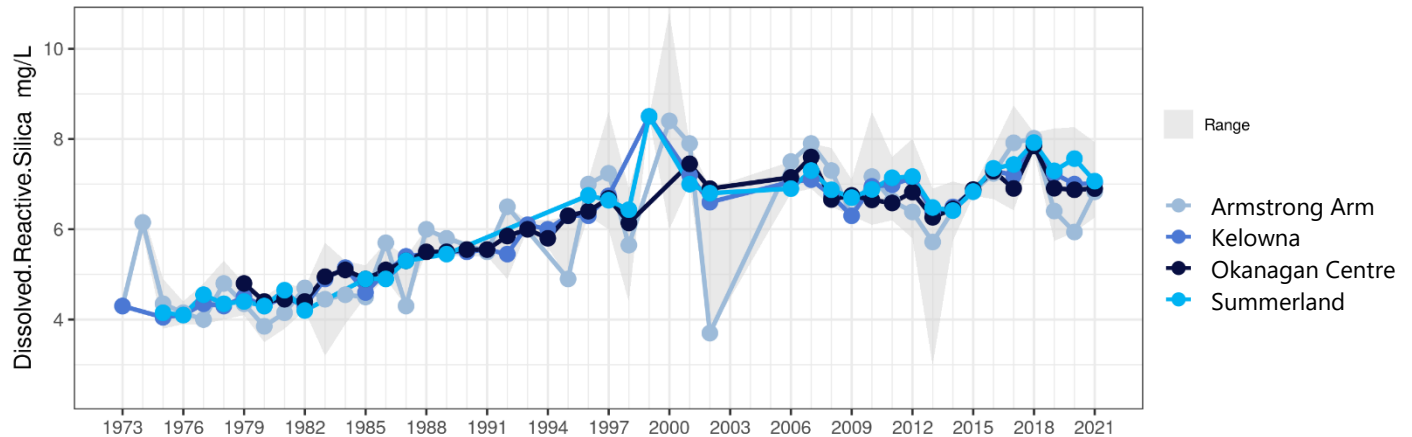


Figure 9: Annual average silica concentration in Okanagan Lake at each sampling site by year with trends highlighted, 1973-2021

2.2.3 Nitrogen and Phosphorus

Nitrogen and phosphorus are the most important nutrients in most aquatic environments. Nutrient limitation occurs when an essential element (typically nitrogen or phosphorus) is in relatively short supply. Algae production is limited by the availability of that nutrient despite potential abundance of other nutrients. In the Okanagan, phosphorus is the main limiting nutrient while dissolved inorganic nitrogen also limits productivity during the summer. Their concentrations are directly linked to the amount of algae that the lake produces (Nordin, 2005).

Nitrogen

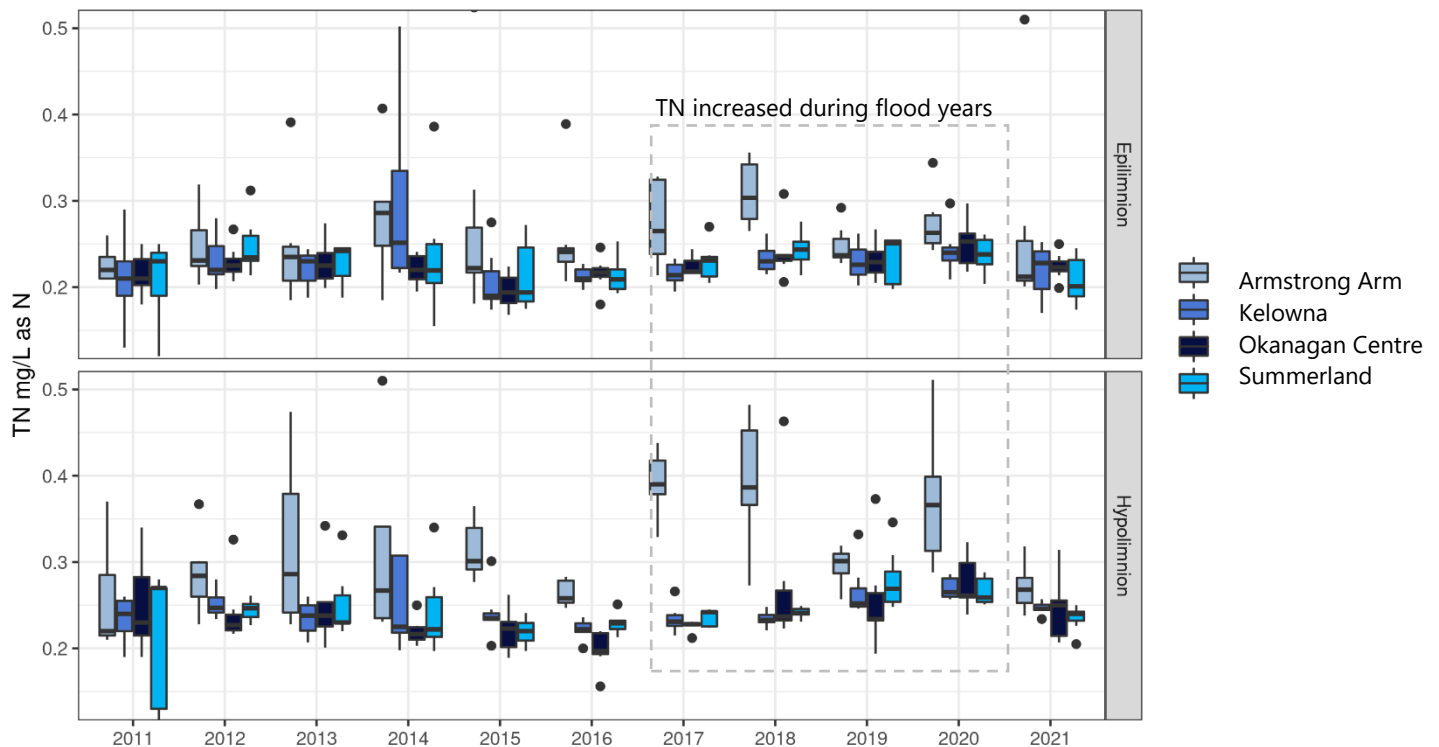
Total nitrogen (TN) averaged 0.238 ± 0.048 mg/L as N in the epilimnion of Okanagan Lake during 2021. The objective for Okanagan Lake was set as a spring value (March sample date²) of 0.230 mg/L for the main basins and 0.250 mg/L for the Armstrong Arm. The objective was exceeded at all sites during 2021 as it has in most years (Table 7). TN increased in the hypolimnion at Armstrong Arm from 2011-2021 (Mann-Kendall, $p=0.002$) and Kelowna (Mann-Kendall, $p=0.04$; Table 7). The increasing trend was noted at all sites in the 2020 report but 2021 sampling revealed that this effect may have been a short-term effect from the 2017-2018 and 2020 flood years. Average TN values were comparable to those found in the literature for Okanagan Lake (0.17-0.23 mg/L as N; Andrusak et al., 2000).

² The Armstrong Arm sample is typically collected in early April because of ice-cover in that part of the lake

Table 7: Total nitrogen in mg/L as N concentration at Okanagan Lake sampling sites, 2021

Site	Depth	Objective	Trend	Avg	SD	Max	Min
Summerland	<10m	0.230	-	0.209	0.027	0.245	0.174
	>20m		-	0.235	0.015	0.25	0.205
Kelowna	<10m	0.230	-	0.218	0.031	0.252	0.17
	>20m		↑	0.247	0.007	0.257	0.234
Ok Centre	<10m	0.230	-	0.224	0.016	0.25	0.199
	>20m		-	0.244	0.037	0.314	0.207
Armstrong	<10m	0.250	-	0.264	0.111	0.51	0.201
Arm	>20m		↑	0.271	0.029	0.318	0.238

Note: Red shaded cells indicate that the Spring value exceeded the objective while green indicates that the value met the objective. Statistical significance of general trends derived from all data for a site may disappear when depths are split apart due to smaller sample size


Figure 10: Annual average total nitrogen in Okanagan Lake, 2011-2021

Hypolimnetic nitrate increased at all sites from 2011-2021 (Mann-Kendall, $p < 0.001$; Figure 11). Analysis of the entire Okanagan Lake water chemistry database indicates that this trend has been ongoing for decades (1973-2021 dataset; Mann-Kendall, $p < 0.001$; Figure 11). This suggests a connection to human activities in the region because the trend has continued through several wet-dry climate cycles. There is also recent research noting that changes in nitrate concentration are a marker of climate change (Mas-Pla & Menció, 2019; Stuart et al., 2011). Layered on

top of this trend are short-term increases in nitrate during and after wet years such as 2017-2018 and 2020.

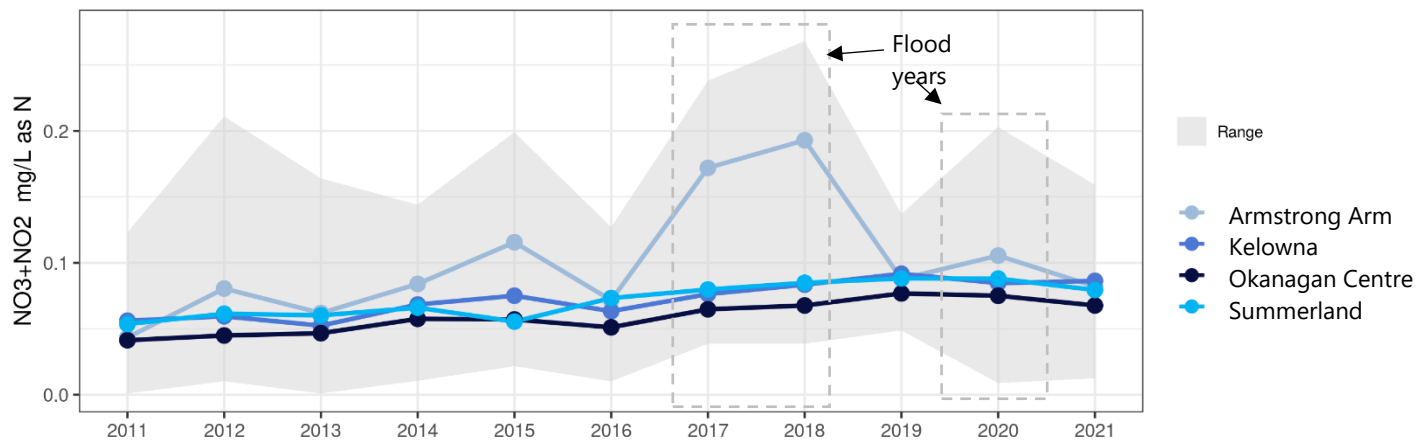


Figure 11: Annual average nitrite (NO₂) + nitrate (NO₃) in mg/L as N in the deep water of Okanagan Lake, 2011-2021

Nitrate is rapidly consumed by algae in the epilimnion each spring and thermal stratification prevents replenishment from the deeper water during the summer (Figure 11). Nitrate increased dramatically each summer in the hypolimnion of the Armstrong Arm because of chemistry associated with the low-DO conditions (Figure 12). For example, nitrate increased from <0.0032 mg/L as N in the epilimnion to 0.159 mg/L as N in the hypolimnion by Sept 2021.

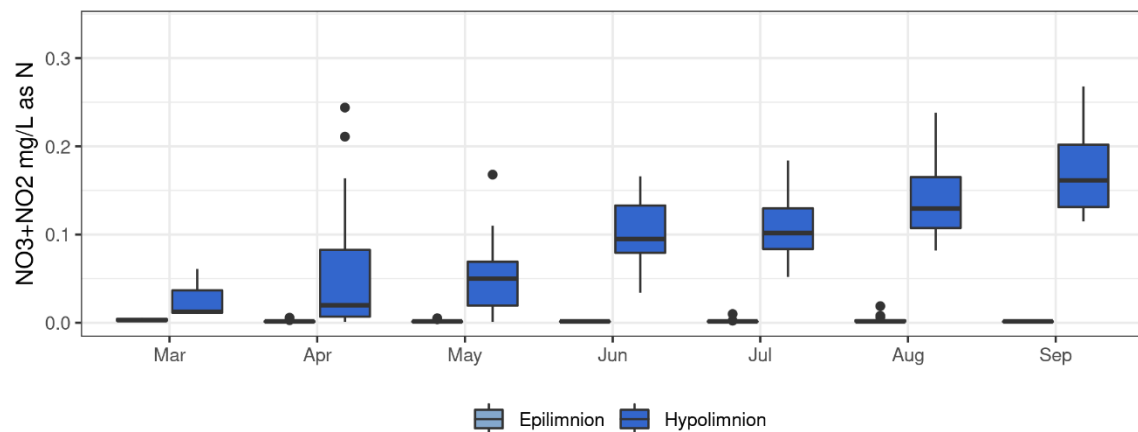


Figure 12: Nitrate + nitrite in Okanagan Lake at Armstrong Arm by month illustrating seasonal accumulation of nitrate in low oxygen hypolimnion, 2011-2021

Phosphorus

Total phosphorus (TP) measures all forms of phosphorus including those that may not be bioavailable. Total phosphorus averaged 0.008 ± 0.009 mg/L as P across Okanagan Lake during 2021 (Table 8). The TP objective for Okanagan Lake applies to the maximum phosphorus

concentration at the spring overturn (Nordin, 2005; taken as March³). The objectives range from 0.007 mg/L in the south basin to 0.010 mg/L in the Armstrong Arm.

The TP objective was exceeded in the epilimnion and hypolimnion of Armstrong Arm in 2021, as it was in most years from 2011-2021 (Table 8). Increasing trends in TP occurred at all sites from 2011-2021 (Table 8, Figure 13). This trend was driven, in part, by large increases in TP during wet years such as 2012-2013 and 2017-2018. TP includes phosphorus associated with suspended sediment carried into the lake and it increases in Okanagan Lake during wet years and decreases during dry years such as 2021 (Figure 13).

Table 8: Total phosphorus (mg/L as P) at Okanagan Lake sampling sites during 2021

Site	Depth	Objective	Trend	Avg	SD	Max	Min
Summerland	<10m	0.007	-	0.005	0.001	0.008	0.003
	>20m		↑	0.004	0.001	0.006	0.003
Kelowna	<10m	0.008	-	0.005	0.002	0.008	0.003
	>20m		↑	0.005	0.001	0.006	0.004
Ok Centre	<10m	0.008	↑	0.005	0.001	0.007	0.004
	>20m		↑	0.006	0.001	0.008	0.004
Armstrong Arm	<10m	0.010	↑	0.010	0.003	0.014	0.006
	>20m		↑	0.026	0.020	0.063	0.011

Note: Red shaded cells indicate that spring overturn value exceeded the objective while green shaded cells met the objective during 2021. Trends are based upon 2011-2021 data only

³ The Armstrong Arm spring sample is typically collected in early April because of ice-cover in March

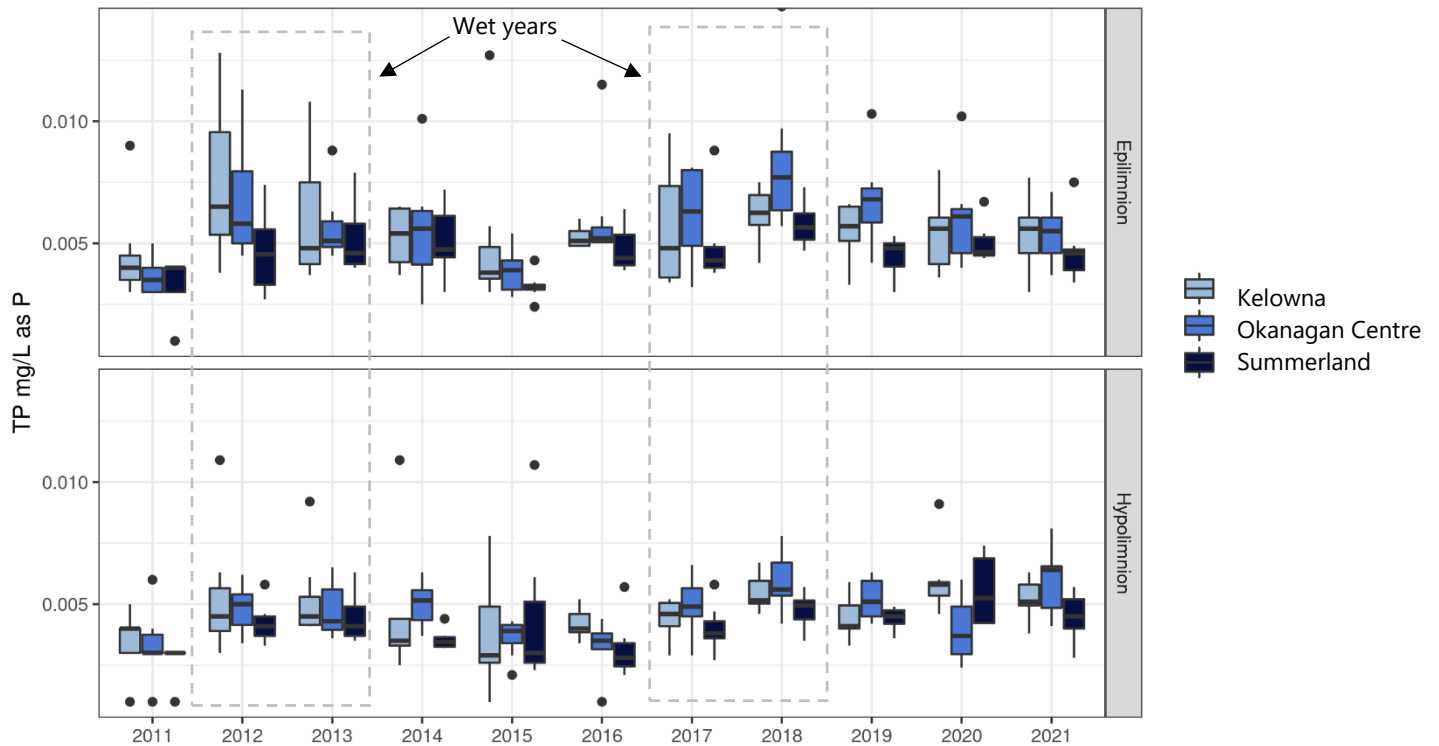
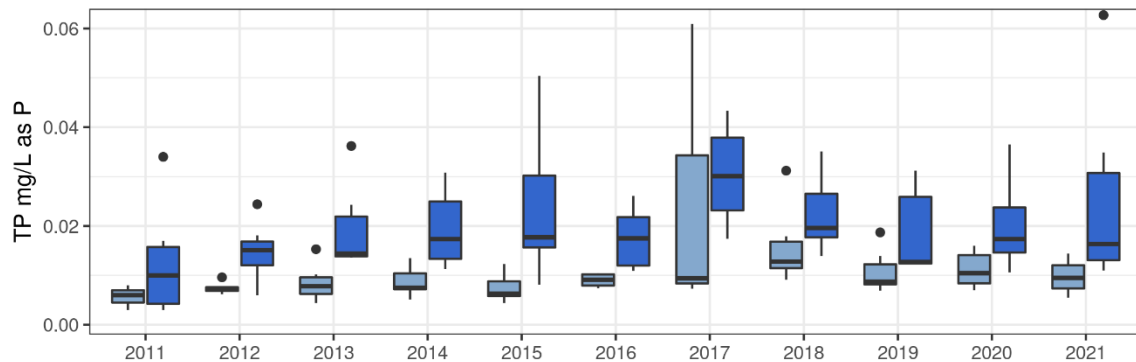


Figure 13: Annual average total phosphorus in Okanagan Lake at the three major basin sampling sites by year from 2011-2021

Note: Decreasing trend from 1973-2005 and increasing trend from 2005-2020

TP experienced minor seasonal variation with a slight increase during freshet in some years at Summerland, Kelowna and Okanagan Centre while there was dramatic variation in the Armstrong Arm over the course of each growing season. TP increased in the hypolimnion during the summer, possibly from phosphorus released from the sediment under low-oxygen conditions while algae productivity reduced surface concentrations over the growing season (Figure 14).



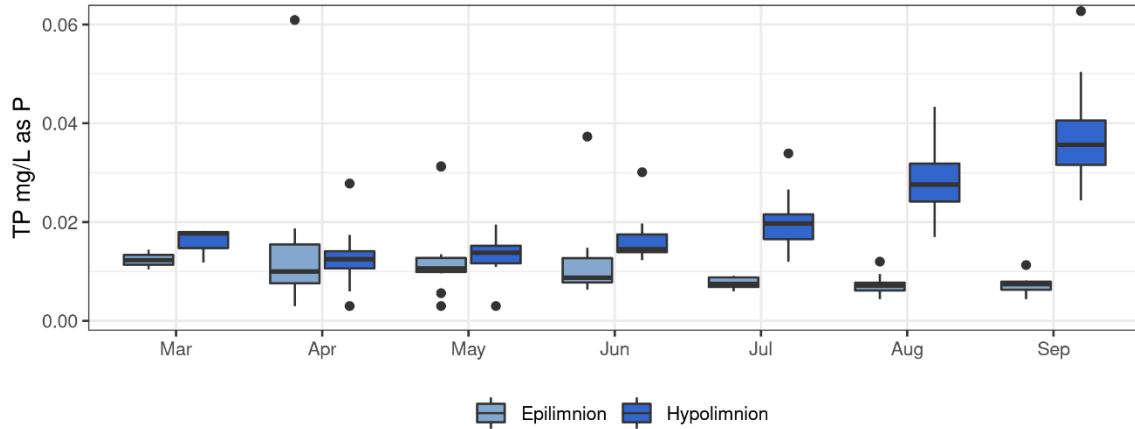


Figure 14: Total phosphorus in the Armstrong Arm, 2011-2021

Note: small reduction in epilimnetic TP over the growing season but it does not drop below detection as nitrate does

Dissolved phosphorus (TDP) measures the more bioavailable forms of phosphorus and is a good indicator of potential impacts to biota. TDP in the epilimnion of the Armstrong Arm increased from 2011-2015 but was stable over the past 5 years while the hypolimnion continued to increase (Mann-Kendall for 2011-2021 in the hypolimnion, $p < 0.001$). The September 7 epilimnion sample from Okanagan Centre had unusually high TDP, possibly a consequence from the White Rock Lake fire; fire retardant and ashfall both contain relatively high concentrations of phosphorus. TDP was stable from 2011-2021 at the three major basin sample locations (Summerland, Kelowna, and Okanagan Centre). Ortho-phosphate measures only the soluble reactive phosphorus fraction of the TDP and there were no significant trends in ortho-phosphate data at any of the sites from 2011-2021 with 72% of samples from the major basin sample sites having undetectable concentrations. Anoxic conditions in the Armstrong Arm increase hypolimnetic orthophosphate each summer.

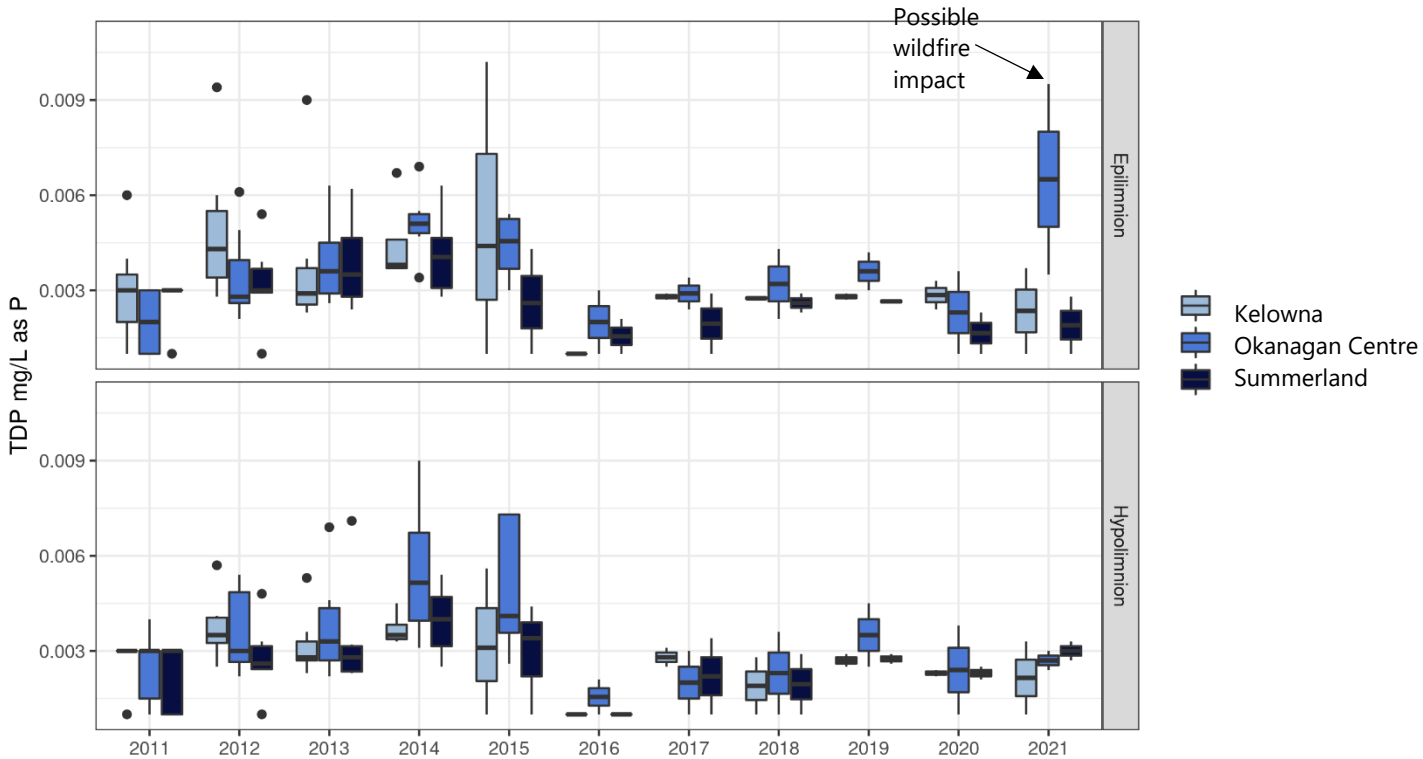


Figure 15: Annual average dissolved phosphorus in Okanagan Lake illustrating declining long-term trend at Okanagan Centre, Kelowna, and Summerland from 2011-2021

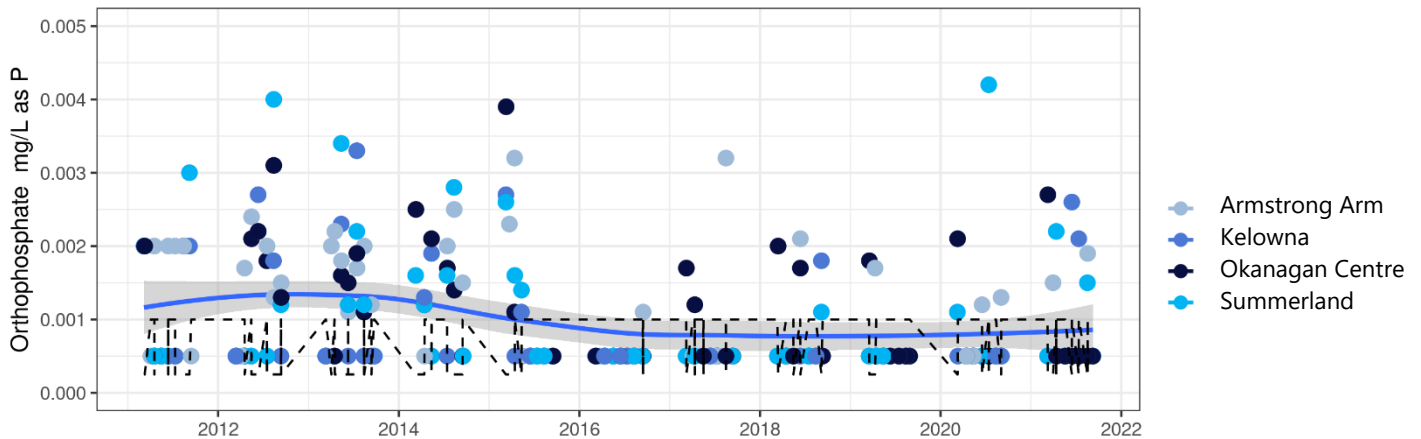


Figure 16: Annual average ortho-phosphate in the epilimnion of Okanagan Lake, 2011-2021

Note: dashed black line indicates lab detection limit

N:P Ratio

The ratio of nitrogen to phosphorus is a key factor in determining which types of phytoplankton will proliferate. Many species of cyanobacteria can fix atmospheric nitrogen and are therefore limited primarily by available phosphorus. These algae are more likely to bloom

when phosphorus is abundant relative to nitrogen. The Okanagan Lake objective for the spring ratio of total nitrogen to total phosphorus is >25:1 in March samples. The objective was met at Summerland, Kelowna, and Okanagan Centre during 2020 while the Armstrong Arm had higher phosphorus concentrations than the rest of Okanagan Lake and the hypolimnion did not meet the objective in 2021 (Figure 13, Table 9). The TN:TP ratio decreased in the epilimnion of the Armstrong Arm and the hypolimnion at Kelowna from 2011-2021 (Mann-Kendall, $p \leq 0.03$) (Figure 13). The declining TN:TP trend is related to corresponding increasing trends in TP in the hypolimnion of Okanagan Lake at Kelowna and Armstrong Arm, a trend that is related to the recent series of flood years (2017-2018, 2020; Table 8).

Table 9: Ratio of average TN to average TP during spring at Okanagan Lake sampling locations, 2011-2021

Site	Depth	TN	TP	2021 Ratio	Objective	Trend
Summerland	<10m	0.209	0.0047	47:1	>25:1	-
	>20m	0.235	0.0045	55:1	>25:1	-
Kelowna	<10m	0.218	0.0054	45:1	>25:1	-
	>20m	0.247	0.0052	48:1	>25:1	↓
Ok Centre	<10m	0.224	0.0054	44:1	>25:1	-
	>20m	0.244	0.0059	43:1	>25:1	-
Armstrong Arm	<10m	0.264	0.0097	28:1	>25:1	↓
	>20m	0.271	0.0257	15:1	>25:1	-

Note: red shaded cells indicate that the value did not meet the objective while green shaded cells met the objective during 2021

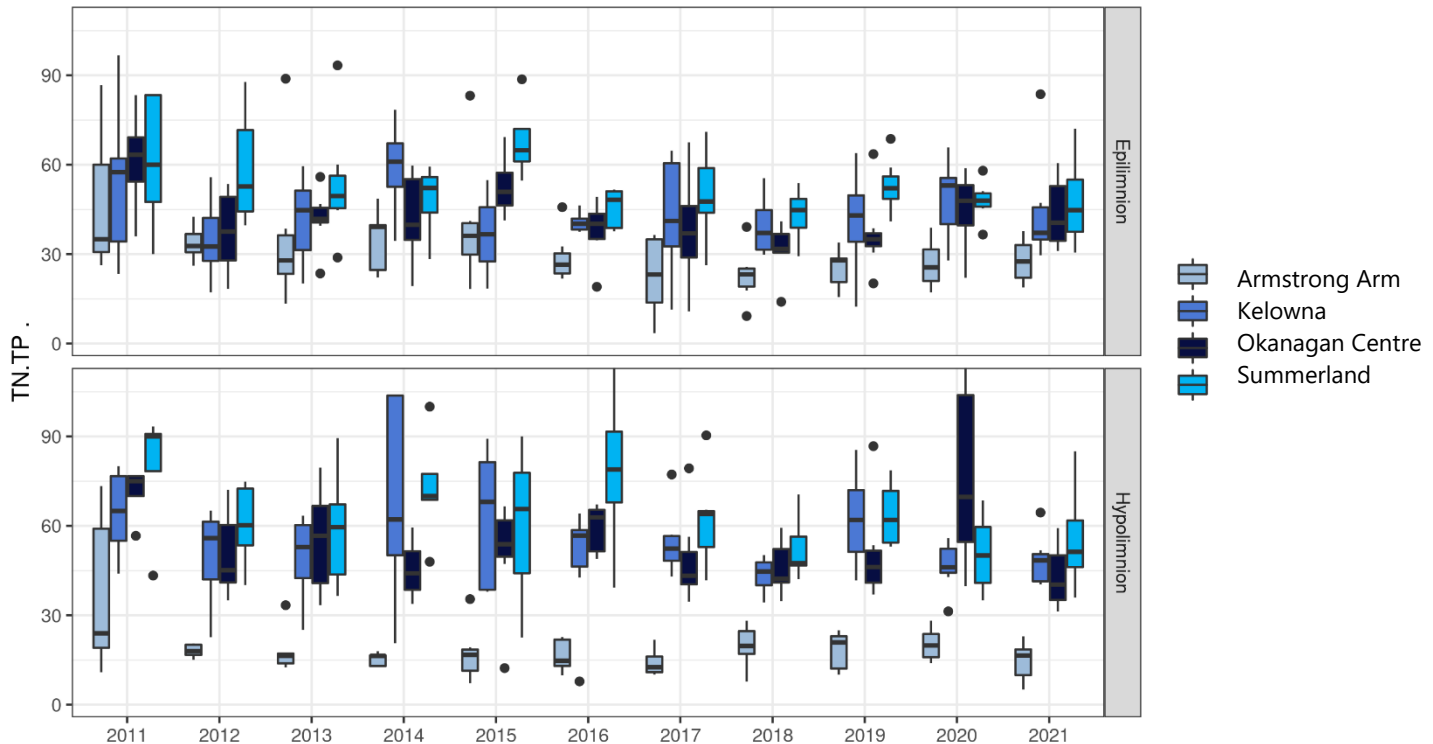


Figure 17: Nitrogen to phosphorus ratio at Okanagan Lake sampling sites 2011-2021

2.3 Biology

2.3.1 Phytoplankton

The Armstrong Arm of Okanagan Lake is shallower and has the potential to produce more phytoplankton and zooplankton than the deep basins of Okanagan Lake regardless of human activity. Phytoplankton and zooplankton samples were taken from all four sites were analyzed during 2021. Biomass analysis and taxonomic identification were performed on the taxonomy samples while chlorophyll-a concentrations were monitored as a productivity metric for phytoplankton abundance.

Chlorophyll-a

Chlorophyll-a (chl-a) is a photosynthetic pigment found in most freshwater algae species. As expected, chl-a followed an inverse trend to Secchi depth (Figure 6, Figure 18). Chl-a was lowest in the late winter and peaked in April-May during the increased spring algal growth before decreasing through the summer. During 2021, chl-a concentrations met the objectives at all sites (Table 10). Spring chl-a concentrations were high with a maximum of 7.5 $\mu\text{g/L}$ at Kelowna (Table 10). While average chl-a concentrations in the Armstrong Arm have declined over the past four years (Mann-Kendall, $p=0.02$), they remained higher than pre-2017 (Figure 18). Chl-a concentration at the three major basin sites was stable from 2011-2016 and then again from 2018-2021 but there was a large increase during 2017-2018 because of the flooding during

those years and unlike the Armstrong Arm, the major lake basins have not yet begun to return to pre-2017 concentrations (Figure 18).

In most years, including 2021, there was a north to south decreasing trend in the chlorophyll-a data with the Armstrong Arm having the highest and Summerland having lowest average concentrations (Table 10).

Table 10: Chlorophyll-a in µg/L at Okanagan Lake sampling sites, 2011-2021

Site	Objective	Trend	Average	StdDev	Max	Min
Summerland	4	-	2.70	2.50	6.07	0.69
Kelowna	4.5	↑	3.11	2.49	7.48	1.20
Ok Centre	4.5	↑	2.94	2.01	5.98	1.04
Armstrong Arm	5	↑	3.63	1.78	6.34	1.68

Note: Green shading indicates met objective during 2021

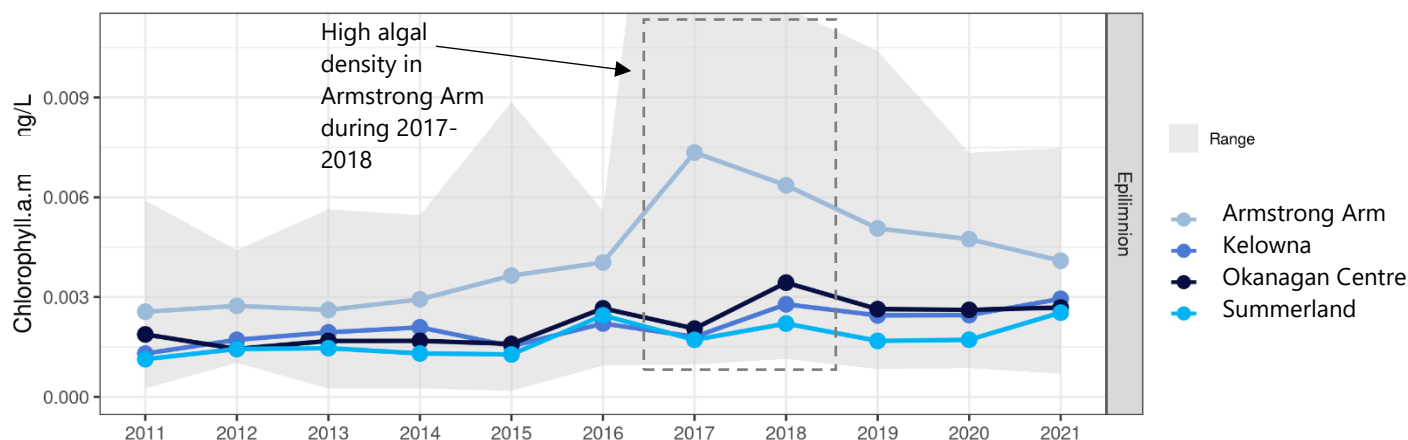


Figure 18: Annual chlorophyll-a concentration at the four Okanagan Lake sampling sites, 2011-2021

Biovolume

Phytoplankton biovolume samples were collected as one litre composites from 1-10 m and the biovolumes were determined taxonomically. From 2011-2014, biomass was determined using ash-free dry mass (AFDM). It is not possible to directly compare the results from the two methodologies and only the 2015-2021 results are considered here.

The objective is that the growing season average should be $<0.75 \mu\text{L/L}$ (Table 11). Samples from Summerland and the Armstrong Arm exceeded this objective for 2021 with growing season averages of $0.86 \mu\text{L/L}$ and $1.76 \mu\text{L/L}$ respectively.

Phytoplankton biovolume increased significantly from 2015-2021 at Summerland and at Kelowna (MK tests, $p < 0.001$) - a trend that matches chlorophyll-a and is related to increased nutrient delivery from the large 2017-2018 and 2020 freshets (Figure 19). A one-year lag has been observed between wet years and elevated productivity in Okanagan Lake and this effect

helps explain why 2019 and 2021 production was very high despite the much smaller freshets (Figure 19). Taxonomic monitoring of the north basin and Armstrong Arm began in 2018 and so there were fewer years of data upon which to base trends. Nutrients washed into Okanagan Lake from increased erosion and vegetation loss in areas burned by the White Rock Lake wildfire will likely lead to higher productivity in the north basin and Armstrong arms during 2022.

Table 11: Phytoplankton biovolume in $\mu\text{L/L}$ at Okanagan Lake sampling sites, 2021

Site	Objective	Trend	Average	StdDev	Max	Min
Summerland	<0.75	↑	0.860	0.616	1.854	0.237
Kelowna	<0.75	↑	0.694	0.570	1.858	0.212
Ok Centre	<0.75	-	0.532	0.353	0.990	0.202
Armstrong Arm	<0.75	-	1.760	1.551	4.924	0.665

Notes: Green shading = met objective while red shading = did not meet objective.

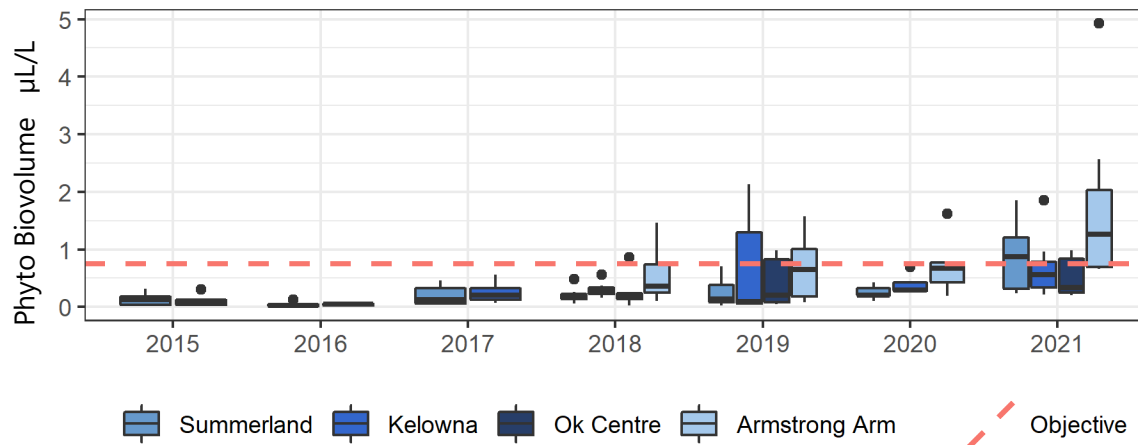


Figure 19: Phytoplankton Biovolume at Summerland and Kelowna, 2015-2021

Phytoplankton Taxonomy

Algae samples were identified to the species level and then grouped into broad algae types for analysis in this report. Diatoms tend to proliferate in the spring and their numbers decrease through the summer. Cyanobacteria were always numerous throughout the growing season in Okanagan Lake, but typically peaked in the late summer (Figure 20,

Table 12). Algae counts were highest in the Armstrong Arm throughout the year but all sites experienced high densities during the spring bloom (Figure 21). The Armstrong Arm also experienced high heterocystous cyanobacteria counts during the late summer led by *Anabaena sp.*, a potentially toxic species.

Table 12: Average phytoplankton counts by major algae groups in cells/mL, 2021

Algae Type	2021 Averages			
	Summerland	Kelowna	Okanagan Centre	Armstrong Arm
Diatoms	2154	3474	153	272
Greens	178	193	406	563
Yellow-Brown	403	478	333	354
Cyanobacteria	4969	5024	2451	5862
Dinoflagellates	14	14	5	25
Euglenoids	9	7	1	1
Total Algae	8846	9767	4744	9771


Figure 20: Taxonomic breakdown of algae by major types during 2021

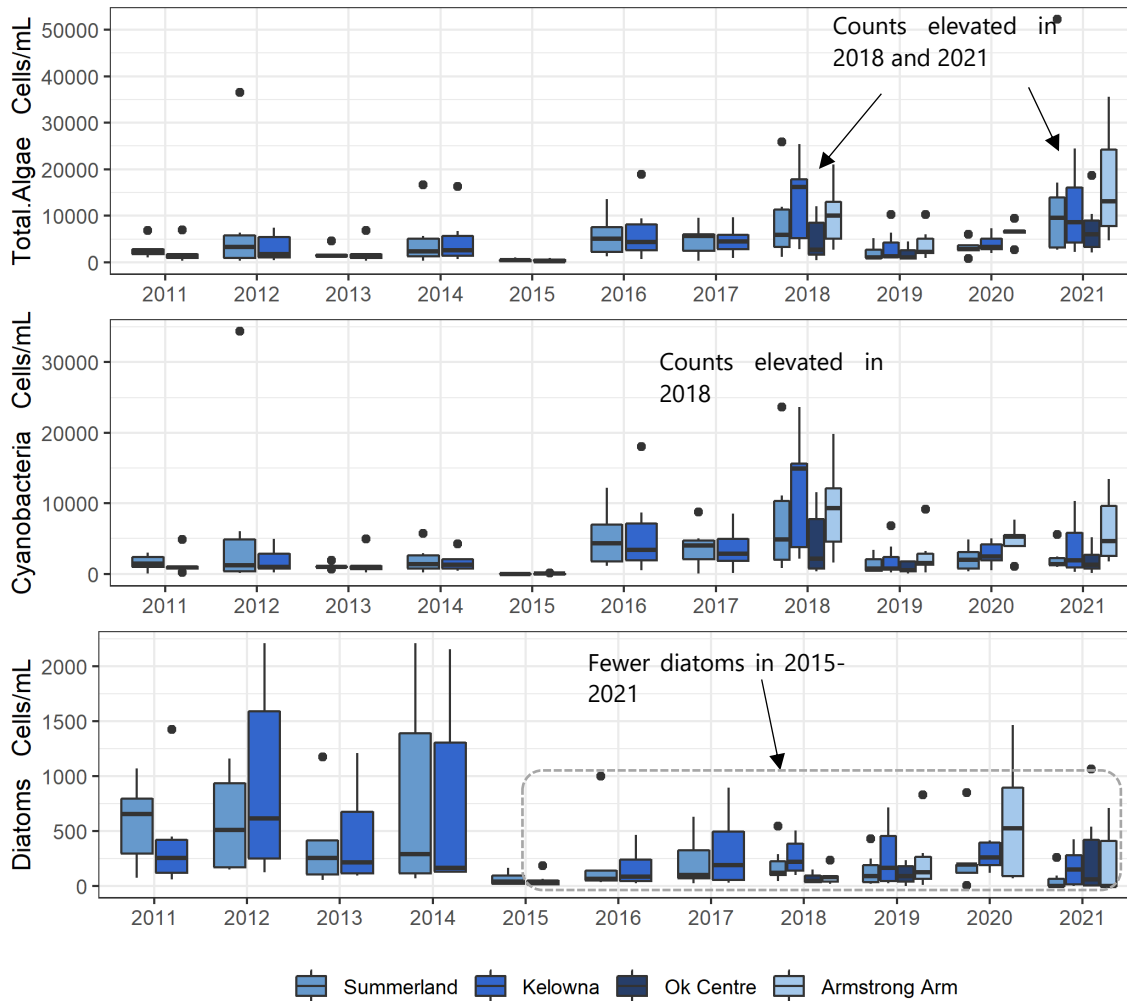


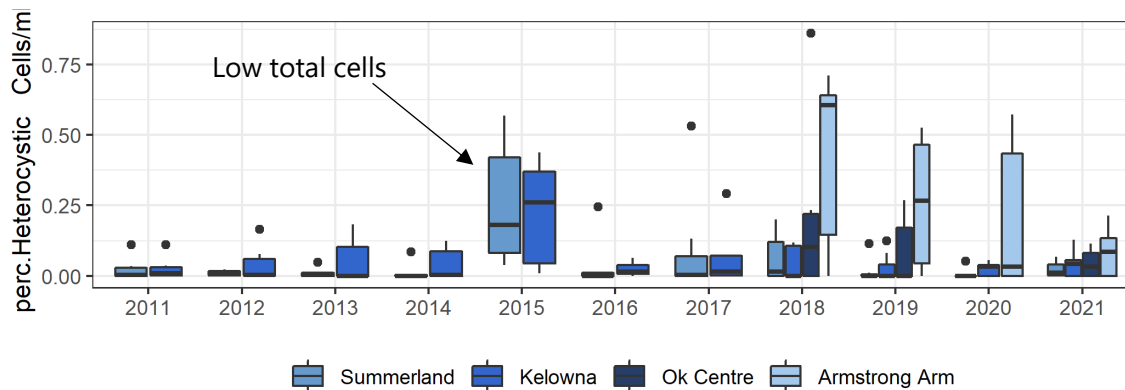
Figure 21: Total algae, cyanobacteria, and diatom counts in Okanagan Lake, 2011-2021

The Okanagan Lake objective for phytoplankton taxonomy states that no more than 5% of total cell counts should be heterocystous cyanobacteria in a given sample. These and other cyanobacteria can produce toxins that are harmful to human health when they are present in high concentrations. The heterocystous cyanobacteria objective was exceeded during most years including 2021 (Table 13). At all sites there were similar or lower percent heterocystous cyanobacteria than the 2011-2021 average. While problematic, these cyanobacteria densities were not high enough to cause acute health concerns. No significant year-over-year trends were detected in the heterocystous cyanobacteria counts from 2011-2021.

Table 13: Percent of total algae counts that were heterocystous cyanobacteria from 2021

Site	Objective	Trend	# Exceeding	Average	StdDev	Max	Min
Summerland	<5%	-	2/7	2.3%	3%	7%	0%
Kelowna	<5%	-	2/7	4.0%	5%	13%	0%
Ok Centre	<5%	-	3/7	4.5%	5%	11%	0%
Armstrong Arm	<5%	-	4/7	8.1%	9%	21%	0%

Note: Yellow shading indicates that the site did not meet the objective in some but not all samples


Figure 22: Percent of total algae counts that were heterocystous cyanobacteria, 2011-2021

2.3.2 Zooplankton

Biomass

Zooplankton biomass samples were obtained using a 150 µm net lowered to 45 m and raised vertically at a rate of approximately 0.5 m/second. The 150 µm net mesh size lets most phytoplankton pass through, while collecting most zooplankton. Samples were identified taxonomically and the biomass was calculated from the abundance.

The Okanagan Lake objective is a growing season average of >50 µg/L (Nordin, 2005). This objective was met at all sites during 2021 with above average zooplankton abundance (Table 14). While biomass during 2021 was unusually high, skewing trend results, there were no significant trends were detected in zooplankton biomass from 2015-2020 beyond the interannual variation. The cause of the elevated 2021 zooplankton density is unclear but may relate to elevated algae densities, more food for zooplankton to feed upon.

Table 14: Zooplankton biomass in µg/L at Okanagan Lake sampling sites, 2021

Site	Objective	Trend	Average	StdDev	Max	Min
Summerland	>50 µ/L	-	95.8	59.8	207.9	30.9
Kelowna		-	274.8	122.1	442.3	37.1
Okanagan Centre		-	270.0	216.3	692.4	30.8
Armstrong Arm		-	489.9	327.6	1114.8	138.0

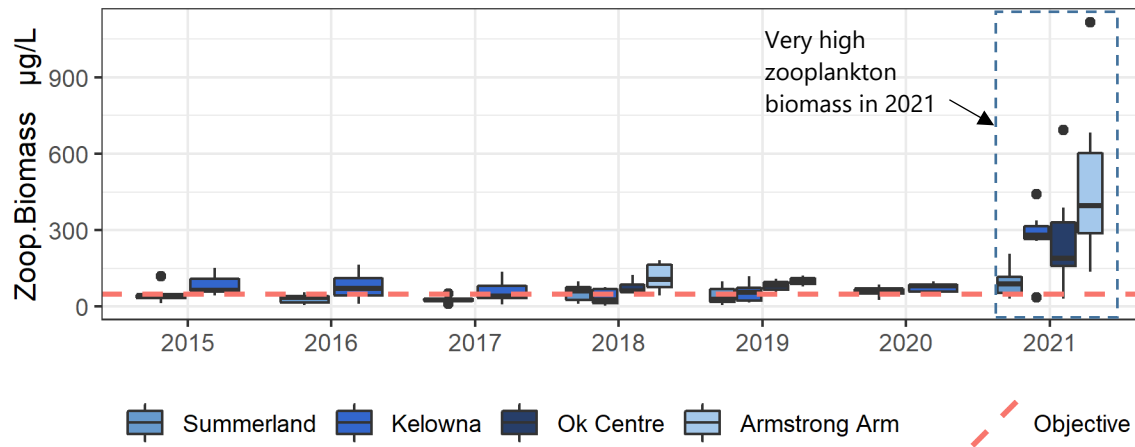


Figure 23: Zooplankton Biomass at the Kelowna and Summerland sampling locations by year, 2015-2021

Notes: There was a change in lab methodology in 2015, preventing comparison with previous years' data

Zooplankton Taxonomy

Zooplankton samples were taxonomically identified to the species level and then grouped for analysis in this report. Copepods were the most numerous and averaged between 56% at Okanagan Centre and 81% at Kelowna in 2021 (Table 15).

The objective for Okanagan Lake is a minimum of 5% of the sample counts be cladocerans. Approximately half of the samples met this objective at Summerland, Kelowna, and the Armstrong Arm but only 1/7 samples met the objective (86% exceeding) in the north basin at Okanagan Centre.

The average zooplankton abundances were consistent with values found in the literature (Andrusak et al., 2000; Rae and Andrusak, 2006; Andrusak et al., 2006). There was a new increasing trend in cladoceran abundance in the Armstrong Arm from 2018-2021 (Table 15).

Table 15: Growing Season average percent cladocerans zooplankton, 2021

Site	Objective	# of samples exceeding	Trend	Average	StdDev	Max	Min
Summerland		4/7	-	7.5%	7.8%	19.7%	0.0%
Kelowna	>5% /	3/7	-	4.0%	4.0%	10.4%	0.0%
Okanagan Centre	sample	1/7	-	2.4%	2.3%	5.6%	0.0%
Armstrong Arm		3/7	↑	4.4%	3.4%	8.7%	0.2%

Note: Yellow shading = met objective in approximately half of samples, red shading = rarely met objective

3.0 Conclusions

This report summarizes the 2021 findings within the context of the 2011-2021 dataset. This report also extracts trends from the data accumulated by the Okanagan Lake Collaborative Sampling program to date (2011-2021) and compares those to the long-term historical database (1973-2021). The effects of Climate Change are already being felt in the Okanagan in recent years with a small freshet followed by extreme heat, drought, and wildfires during 2021. While the results to date indicate that Okanagan Lake exhibits evidence of human activities, the Armstrong Arm is most impacted by continued human activities and watershed degradation, a situation likely to get worse because of the White Rock Lake wildfire. This site had the most exceedances and the most problematic trends, that is, trends moving parameters towards greater exceedances and poorer water quality.

Dissolved Oxygen Each year the temperature of Okanagan Lake increases seasonally in the surface waters until the lake becomes thermally stratified, usually in May. This physical dynamic isolates the deep water from the atmosphere and leads to oxygen depletion below the thermocline in Armstrong Arm. The Armstrong Arm therefore failed to meet the dissolved oxygen objective in 2021, as it has in each year of this study. While the thickness of the low-oxygen zone was larger than 2019-2020, it was still smaller than the very large hypoxic zone of 2018.

Nutrients

Silica analysis of water samples revealed that the short-term 2011-2018 trend is nested within a long period of stable conditions over the past 20 years.

Total nitrogen increased in the Armstrong Arm from 2011-2021 while increasing trends were noted in the hypolimnion at Kelowna. Total nitrogen exceeded the water quality objectives at all sites during 2021. Nitrate increased significantly in the Armstrong Arm and in the hypolimnion at all sites from 2011-2021. This is part of a decades long increasing trend in hypolimnetic nitrate in Okanagan Lake that has continued through multiple wet-dry climate cycles and is likely caused by increasing human impacts within the Okanagan region.

Phosphorus concentrations were highest in the Armstrong Arm where they exceeded the objective during 2021. There were increasing trends in TP from 2011-2021 at all four sites driven in part by increases during wet years such as 2017-2018. The Armstrong Arm is more heavily impacted by human activities and has numerous phosphorus sources such as nutrient enrichment of the Deep Creek watershed from over 100 years of agriculture, and the rise may become exacerbated by nutrients shed from the areas burned during the 2021 White Rock Lake fire. Dissolved phosphorus (TDP) and ortho-P represent the more bioavailable forms of phosphorus and were stable at Summerland, Kelowna, Okanagan Centre while DP increased at the Armstrong Arm. Samples from the Armstrong Arm exceeded the nitrogen-phosphorus ratio objective in 2021, with a decreasing trend in that ratio from 2011-2021 at Summerland, Okanagan Centre, and the Armstrong Arm.

Phytoplankton Productivity Chlorophyll-a (chl-a) concentrations increased each spring during the annual spring high algal growth period and then decreased over the summer and

into the fall. Peak chl-a was high at all sites while at Summerland, Kelowna, and Okanagan Centre chl-a decreased compared to 2017-2018 but remained above their 2011-2017 averages. Previous research by ENV has identified a one-year lag between major nutrient inputs and increases in phytoplankton productivity so it was expected that 2021 productivity would be high after the large 2020 freshet. There was an increasing year-over-year trend detected for chl-a at all sites except Summerland. The chl-a objective was met at all sites during 2021. Phytoplankton biovolume exceeded the objective at Summerland and the Armstrong Arm during 2021.

The taxonomic data indicated that cyanobacteria numerically dominated the phytoplankton samples in 2021, as in every year studied. Samples from all sites exceeded the <5% heterocystous cyanobacteria objective in at least some samples during 2021, although no sites exceeded the objective in all samples.

Zooplankton Productivity Zooplankton biomass was stable from 2015-2020 but was high during 2021. Zooplankton biomass met the objective of >50 µg/L at all four sample locations during 2021. Copepods numerically dominated most samples. The water quality objective of >5% of zooplankton as cladocerans was achieved in 1/3 of samples from 2021.

Table 16 to Table 18 summarize the findings of this report for 2011-2021 by pairing trends to objective exceedances. Special focus should be paid to parameters that did not meet the objective and for which the data trended in the adverse direction over the course of the sampling program.

Similar to the 2011-2020 report, the following areas of concern have been identified that may require further investigation on the part of the Ministry:

- Chronically low Secchi depth in the Armstrong Arm
- Increasing nitrate in hypolimnion of Okanagan Lake since 1970s
- Increasing total phosphorus at all sites except Summerland since early 2000s
- Increasing chlorophyll-a throughout the lake since early 2000s
- Decreasing N:P ratio in the Armstrong Arm
- High densities of potentially toxic cyanobacteria in Armstrong Arm during 2018-2021

Armstrong Arm frequently exceeds most objectives and is the site most at risk of water quality degradation including harmful algae blooms, poor drinking water quality, anoxic conditions, and further eutrophication. There is also high likelihood of further degradation as a consequence of the White Rock Lake wildfire. It must be acknowledged that Armstrong Arm is shallower and therefore would be more productive than the deep basins of Okanagan Lake regardless of human activity. However, human activities in the watershed have impacted this northern-most basin of the lake.

The period of 2016-2021 was marked by multiple extreme weather events that have left a distinct mark on the water quality record of Okanagan Lake. Climate Change and is expected to increase the frequency and intensity of extreme weather events in the future. Climate Change also compounds the loss of resilience in Okanagan watersheds leading to greater water quality changes from those extreme weather events.

Table 16: Okanagan Lake Water Quality Objectives

Objectives (Nordin, 2005)	Summerland	Kelowna	Ok Centre	Armstrong Arm
Secchi Depth (growing season average)	7m	6m	6m	5m
Dissolved Oxygen (minimum in bottom waters)	-	-	-	>5 mg/L
TP (mg/L as P) (maximum at spring overturn)	0.007	0.008	0.008	0.01
Chlorophyll-a (µg/L) (maximum seasonal average)	<4.5	<4.5	<4	<5
TN (mg/L as N) (maximum at spring overturn)	0.230	0.230	0.230	0.250
N:P Ratio (spring weighted ratio)	>25:1	>25:1	>25:1	>25:1
Algae Taxonomy (% heterocystous cyanobacteria)	<5%	<5%	<5%	<5%
Algae Biomass (µL/L) (growing season average)	<0.75	<0.75	<0.75	<0.75
Zooplankton Biomass (µg/L) (growing season average)	>50	>50	>50	>50
Zooplankton Taxonomy (% cladocerans)	>5%	>5%	>5%	>5%

Table 17: Attainment of Okanagan Lake water quality objectives compared to growing season averages during 2021

Objective	Summerland	Kelowna	Ok Centre	Armstrong Arm
Secchi Depth	6.4	6.1	6	3.6
Dissolved Oxygen	10.45	10.88	10.79	0.55
TP (mg/L) 0-10m:	0.005	0.005	0.005	0.010
20-45m:	0.004	0.005	0.006	0.026
Chlorophyll-a (µg/L)	2.7	3.11	2.94	3.63
TN (mg/L) 0-10m:	0.209	0.218	0.224	0.264
20-45m:	0.235	0.247	0.244	0.271
N:P Ratio 0-10m:	47:1	45:1	44:1	28:1
20-45m:	55:1	48:1	43:1	15:1
Algae Taxonomy (% heterocystous cyanobacteria)	2.3%	4.0%	4.5%	8.1%
Algae Biovolume (µL/L)	0.86	0.694	0.532	1.760
Zooplankton Biomass (µg/L)	95.8	274.8	270	489.9
Zooplankton Taxonomy (% cladocerans)	7.5%	4.0%	2.4%	4.4%

Legend:

Achieve objective in >70% of samples	Achieve objective in >25% and <70% of samples	Achieve objective in <25% of samples
--------------------------------------	---	--------------------------------------

Table 18: Summary of trends (2011-2021) and the water quality objectives for Okanagan Lake collaborative sampling program during 2021

Objective	Summerland	Kelowna	Ok Centre	Armstrong Arm
Secchi Depth	-	-	-	-
Dissolved Oxygen	-	-	-	-
TP (mg/L) 0-10m:	↑	↑	↑	↑
Chlorophyll-a (µg/L)	-	↑	↑	↑
TN (mg/L) 0-10m:	-	-	↑	↑
N:P Ratio 0-10m:	↓	-	↓	↓
Algae Taxonomy (% heterocystous cyanobacteria)	-	-	-	-
Algae Biovolume (µL/L)	↑	↑	-	-
Zooplankton Biomass (µg/L)	-	-	-	-
Zooplankton Taxonomy (% cladocerans)	-	-	-	↑

Legend:

Achieve objective in >70% of samples	Achieve objective in >25% and <70% of samples	Achieve objective in <25% of samples
--------------------------------------	---	--------------------------------------

↑ = Increasing Trend

↓ = Decreasing Trend

- = No Trend

4.0 Recommendations

The following recommendations are made for the program moving forward:

- Renew the program for another 3-year term (2022-2024)
- Complete another summary report at the end of the next three-year cycle
- Continue to analyze taxonomy samples in Okanagan Centre and Armstrong Arm
- Use the same taxonomy lab for all samples during 2022 to simplify sample processing and results interpretation

5.0 References

- Andrusak, H., Matthews, S., Wilson, A., Andrusak, G., Webster, J., Sebastian, D., Scholten, G., Woodruff, P., Rae, R., Vidmanic, L., Stockner, J., & Branch, E. (2006). *Okanagan Lake Action Plan Year 10 (2005) Report - Introduction* (Vol. 10, Issue 2005).
- Andrusak, H., Sebastian, D., Mcgregor, I., Matthews, S., Smith, D., Ashley, K., Pollard, S., Scholten, G., Stockner, J., Ward, P., Kirk, R., Lasenby, D., Webster, J., Whall, J., Wilson, G., & Yassien, H. (2000). *Okanagan Lake Action Plan Year 4 (1999) Report*. 4(1999).
- Bergman, B., Gallon, J. R., Rai, A. N., & Stal, L. J. (1997). N₂ fixation by non-heterocystous cyanobacteria. In *FEMS Microbiology Reviews* (Vol. 19, Issue 3, pp. 139–185). [https://doi.org/10.1016/S0168-6445\(96\)00028-9](https://doi.org/10.1016/S0168-6445(96)00028-9)
- Clemens, W. A., Rawson, D. S., & McHugh, J. L. (1939). *Biological Survey of Okanagan Lake B.C.* http://a100.gov.bc.ca/appsdata/acat/documents/r1954/oklkstudy_1362690263031_964b8eb84253194546e8eed7b6cea9606f70d159938f36e216459469b9d7bcce.pdf
- Felip, M., & Catalan, J. (2000). The relationship between phytoplankton biovolume and chlorophyll in a deep oligotrophic lake: decoupling in their spatial and temporal maxima. *Journal of Plankton Research*, 22(1), 91–106. <https://doi.org/10.1093/plankt/22.1.91>
- Larratt, H. (2009). *Deep Okanagan Lake Biology Report*.
- Mas-Pla, J., & Menció, A. (2019). Groundwater nitrate pollution and climate change: learnings from a water balance-based analysis of several aquifers in a western Mediterranean region (Catalonia). *Environmental Science and Pollution Research*, 26(3), 2184–2202. <https://doi.org/10.1007/s11356-018-1859-8>
- Nordin, R. (1985). *Water Quality Criteria for Nutrients and Algae. Overview Report*.
- Nordin, R. N. (2005). *Water Quality Objectives for Okanagan Lake* (Issue January).
- Okanagan Basin Water Board. (2021). *Okanagan Drought Bulletin – August 14, 2021 – Okanagan Basin Water Board*. <https://www.obwb.ca/okanagan-drought-bulletin-august-13-2021/>
- Rae, R., & Andrusak, H. (2006). *Ten- Ten - Year summary of the Okanagan Lake Action Plan* (Issue January).
- Schelske, C. L. (1988). Historic Trends in Lake Michigan Silica Concentrations. *Internationale Revue Der Gesamten Hydrobiologie Und Hydrographie*, 73(5), 559–591. <https://doi.org/10.1002/iroh.19880730506>
- Sokal, M. (2013). *Okanagan Lake Collaborative Monitoring Agreement 2013 Summary Report*.
- Stuart, M. E., Goody, D. C., Bloomfield, J. P., & Williams, A. T. (2011). A review of the impact of climate change on future nitrate concentrations in groundwater of the UK. *Science of the Total Environment*, 409(15), 2859–2873. <https://doi.org/10.1016/j.scitotenv.2011.04.016>

The Weather Network - B.C. sets new Canadian record for hottest temperature ever recorded. (n.d.). Retrieved March 9, 2022, from <https://www.theweathernetwork.com/ca/news/article/canadas-hottest-june-temperature-recorded-amid-western-canada-heat>

Water Office. (2017). *Real-Time Hydrometric Data Graph for Okanagan Lake At Kelowna (08nm083) [Bc]*. https://wateroffice.ec.gc.ca/report/real_time_e.html?mode=Graph&type=&stn=08NM083&startDate=2016-06-21&endDate=2017-12-21&prm1=46&y1Max=&y1Min=&prm2=-1&y2Max=&y2Min=

Wehr, J. (2002). *Freshwater algae of North America: ecology and classification*. http://books.google.ca/books?hl=en&lr=&id=likPwCt1ioEC&oi=fnd&pg=PP2&dq=Freshwater+Algae+of+North+America:+Ecology+and+Classification+&ots=hL32vxVcVg&sig=wMq94pq1DoQb6FBYBpZWg8_QayU

6.0 Appendices

6.1 Appendix 1: 2011-2021 Sampling Data

All data used in this report can be found in the data transfer file
MoE-Synth-DB.xlsx

6.2 Appendix 2: Statistics and Graphing Overview

Statistical analyses were performed on data to support interpretations made throughout this report. The use of the word 'significantly' within this report is understood to signify that the claim being made has stood up under statistical analysis. Unless otherwise stated, all statistical analyses were performed to a confidence of greater than or equal to 95% ($p \leq 0.05$). The \pm symbol indicates plus or minus the standard deviation throughout this report.

Water quality data often contains non-detect values for many parameters. Non-detect values were converted to $\frac{1}{2}$ detection limit for all calculations.

Trends were determined through Mann-Kendall linear regression. Mann-Kendall is a non-parametric test for linearity in data. The test produces a Tau-value and a p-value. The Tau value gives the direction of the data and the p-value indicates whether the trend is statistically significant.

Throughout this report the monthly sampling data was grouped seasonally for additional analyses. March, April, and May data were combined as "Spring"; June, July, and August as "Summer"; and September as "Fall".

Correlations were performed using the Pearson's Correlation method and all R values reported at Pearson's Correlation Coefficients.

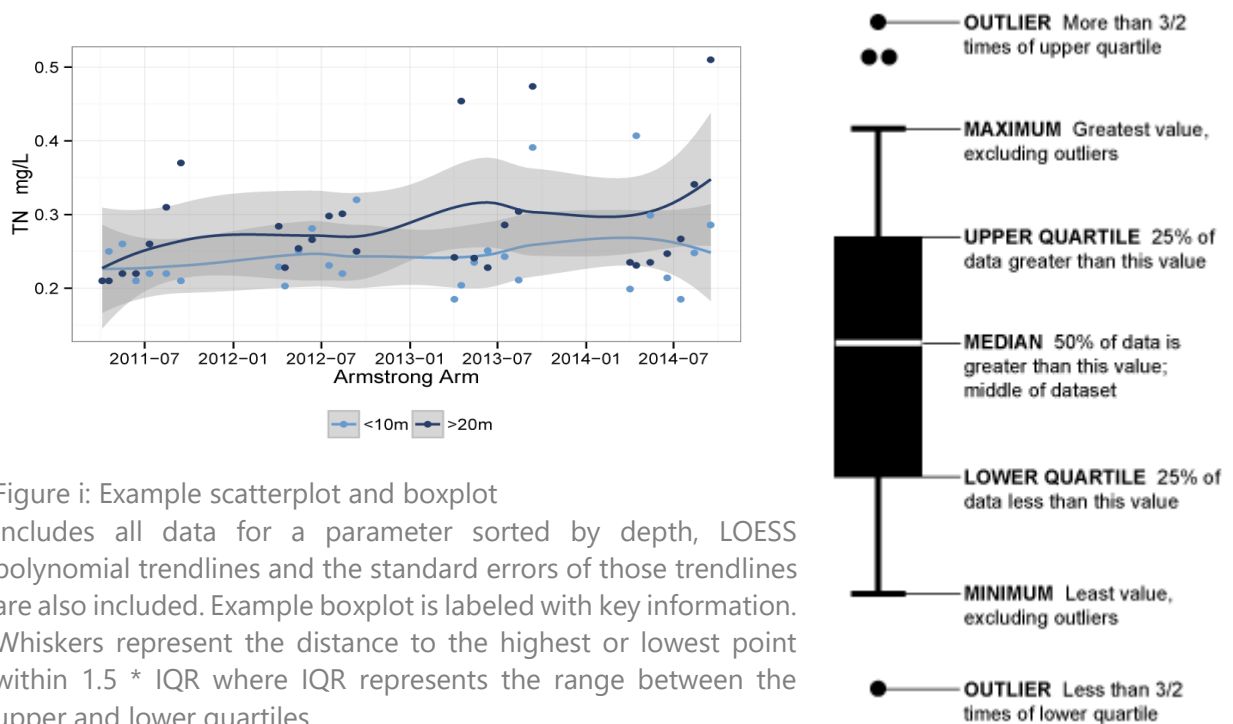
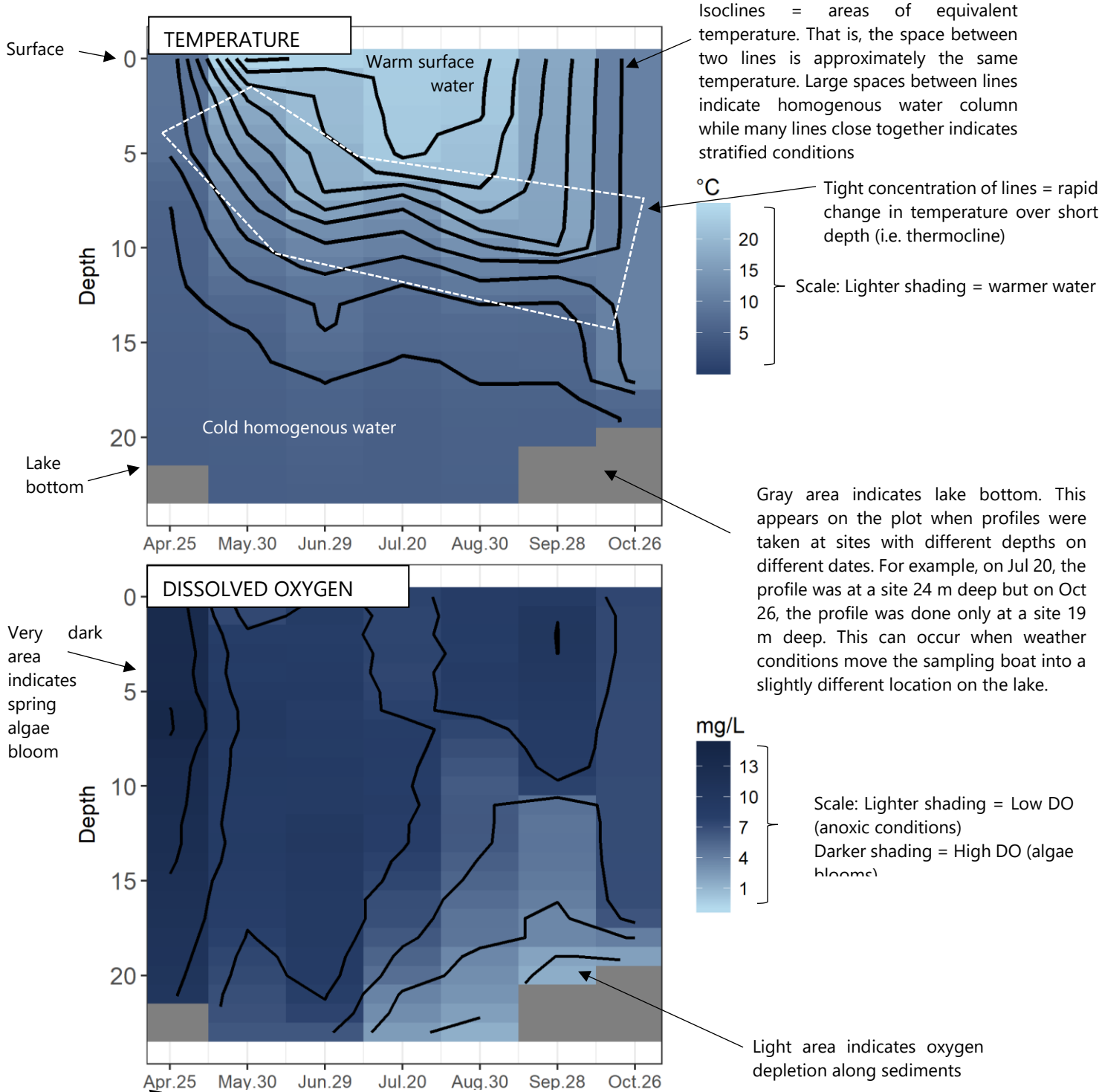


Figure i: Example scatterplot and boxplot
Includes all data for a parameter sorted by depth, LOESS polynomial trendlines and the standard errors of those trendlines are also included. Example boxplot is labeled with key information. Whiskers represent the distance to the highest or lowest point within $1.5 * IQR$ where IQR represents the range between the upper and lower quartiles.

How to Read Temperature/DO Profile Plot

Temperature and dissolved oxygen profiles were routinely collected as part of this study. They are displayed in several locations throughout this report. An example of a temperature graph and a dissolved oxygen graph, descriptions of their key features and how to read them are presented here.



Each vertical column in graph represents conditions within a column of the lake on given date. For example, on Apr 25, DO was very high through entire water column but on Sept 28, there was significant oxygen depletion in the deep water

-----End of Report-----