

Surface Water Monitoring Sites

Quick Start Guide

Updated: June 2018

Search for a Monitoring Site

Instructions

Legend:

- Federal - Provincial Water Quality Monitoring Sites
- BC Lake Monitoring Network
- All BC Environmental Monitoring Locations
 - River, Stream, or Creek
 - Lake or Pond

Search Hints:
You can search for a monitoring site by name, ID number, or permit number. As you type the system will provide suggestions and clicking on a site will move the map to that location and display information about it including links to download data.

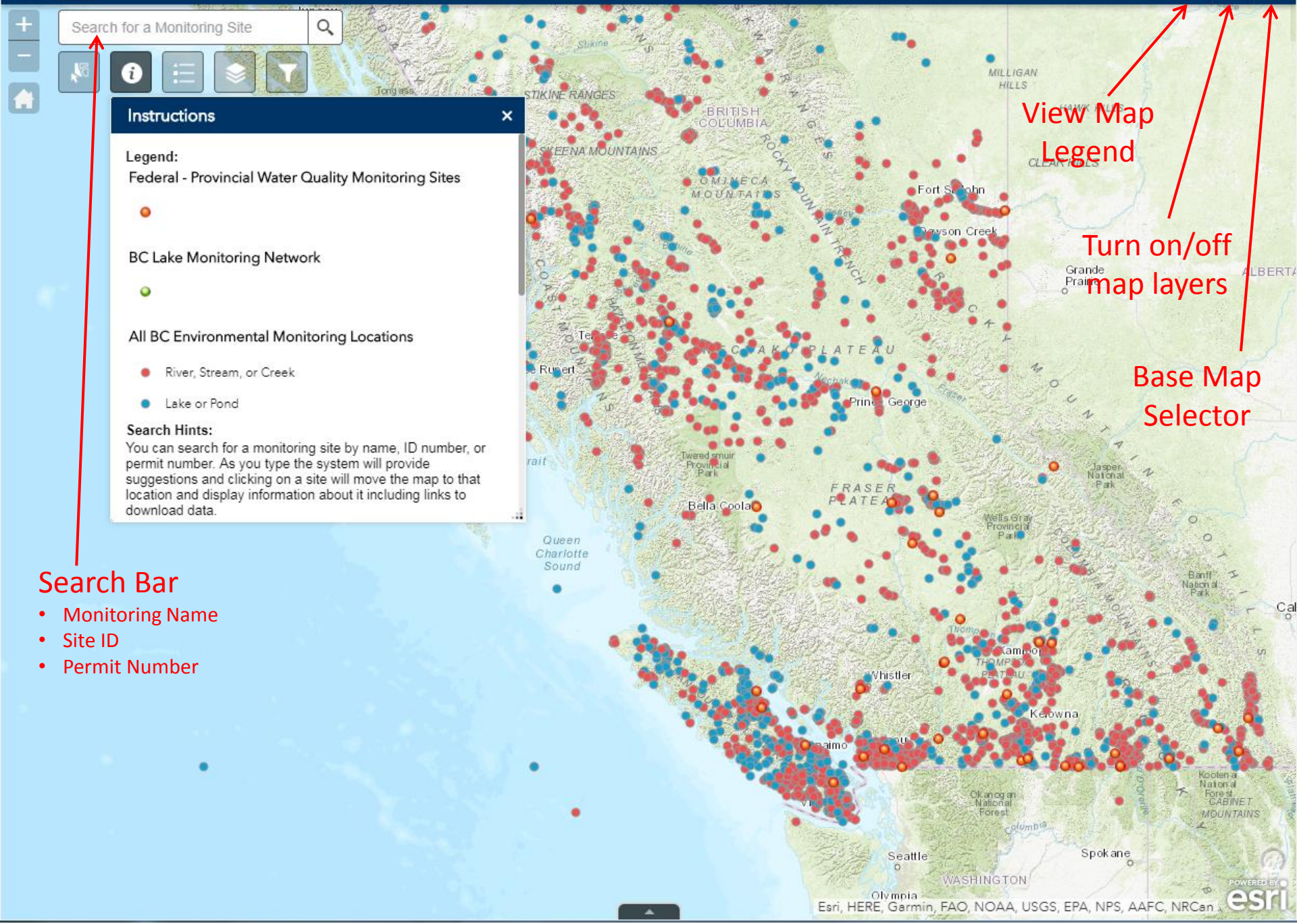
View Map Legend

Turn on/off map layers

Base Map Selector

Search Bar

- Monitoring Name
- Site ID
- Permit Number



Search for a Monitoring Site

Instructions

Legend:

- Federal - Provincial Water Quality Monitoring Sites
- BC Lake Monitoring Network
- All BC Environmental Monitoring Locations
 - River, Stream, or Creek
 - Lake or Pond

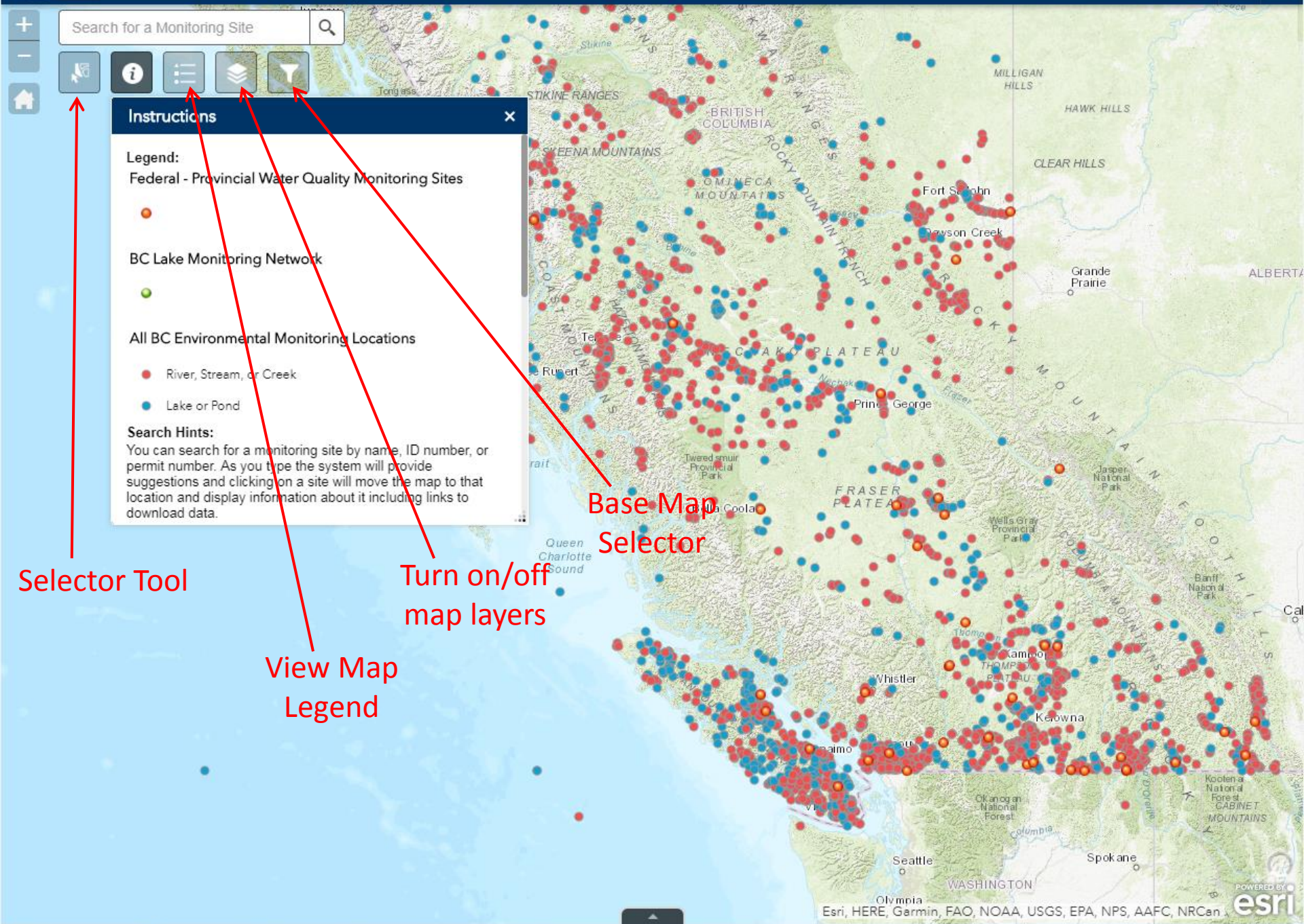
Search Hints:
You can search for a monitoring site by name, ID number, or permit number. As you type the system will provide suggestions and clicking on a site will move the map to that location and display information about it including links to download data.

Selector Tool

View Map Legend

Turn on/off map layers

Base Map Selector



Search for a Monitoring Site

Instructions

Legend:
Federal - Provincial Water Quality Monitoring Sites

BC Lake Monitoring Network

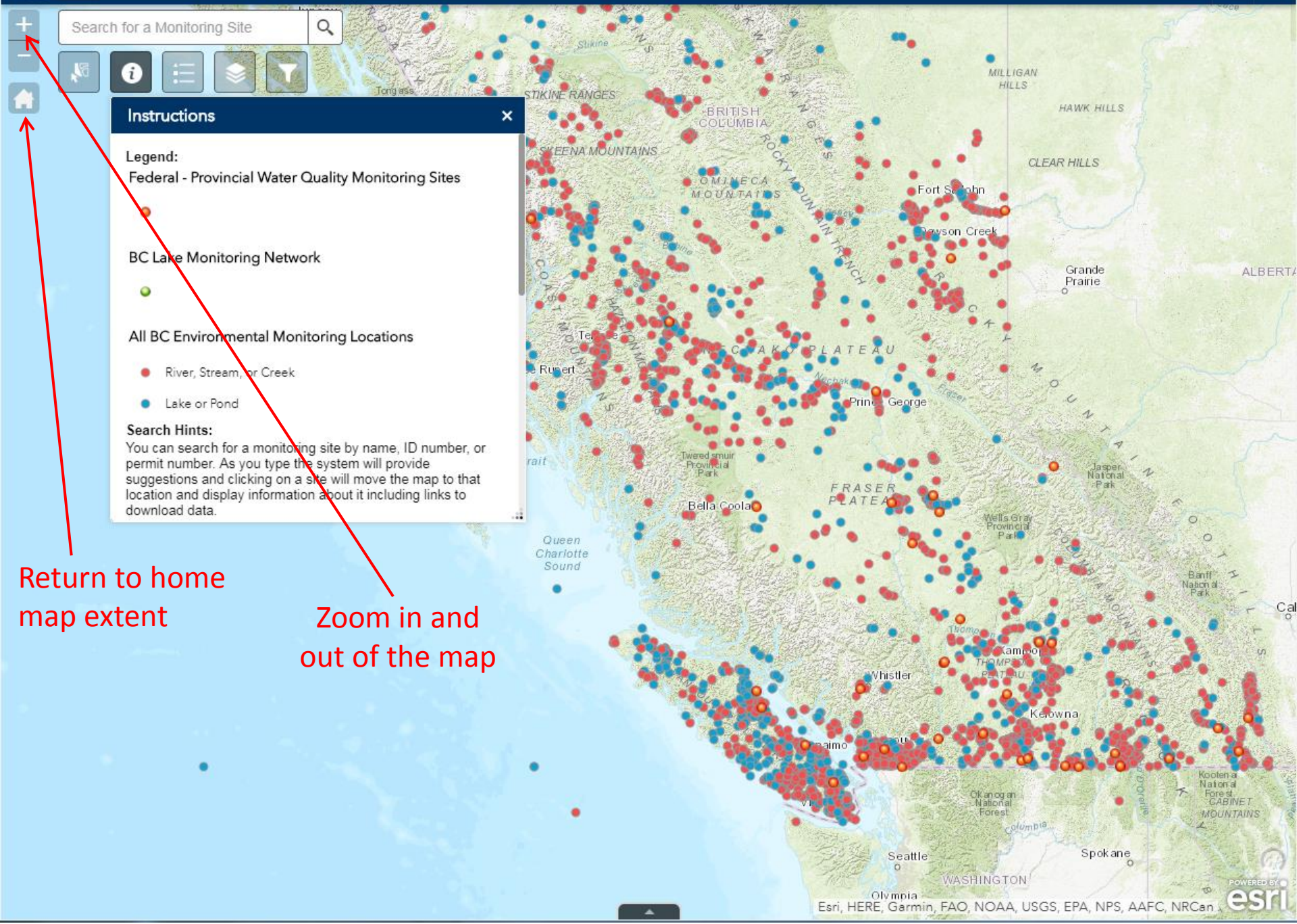
All BC Environmental Monitoring Locations

- River, Stream, or Creek
- Lake or Pond

Search Hints:
You can search for a monitoring site by name, ID number, or permit number. As you type the system will provide suggestions and clicking on a site will move the map to that location and display information about it including links to download data.

Return to home map extent

Zoom in and out of the map



Search Feature

Nanaimo

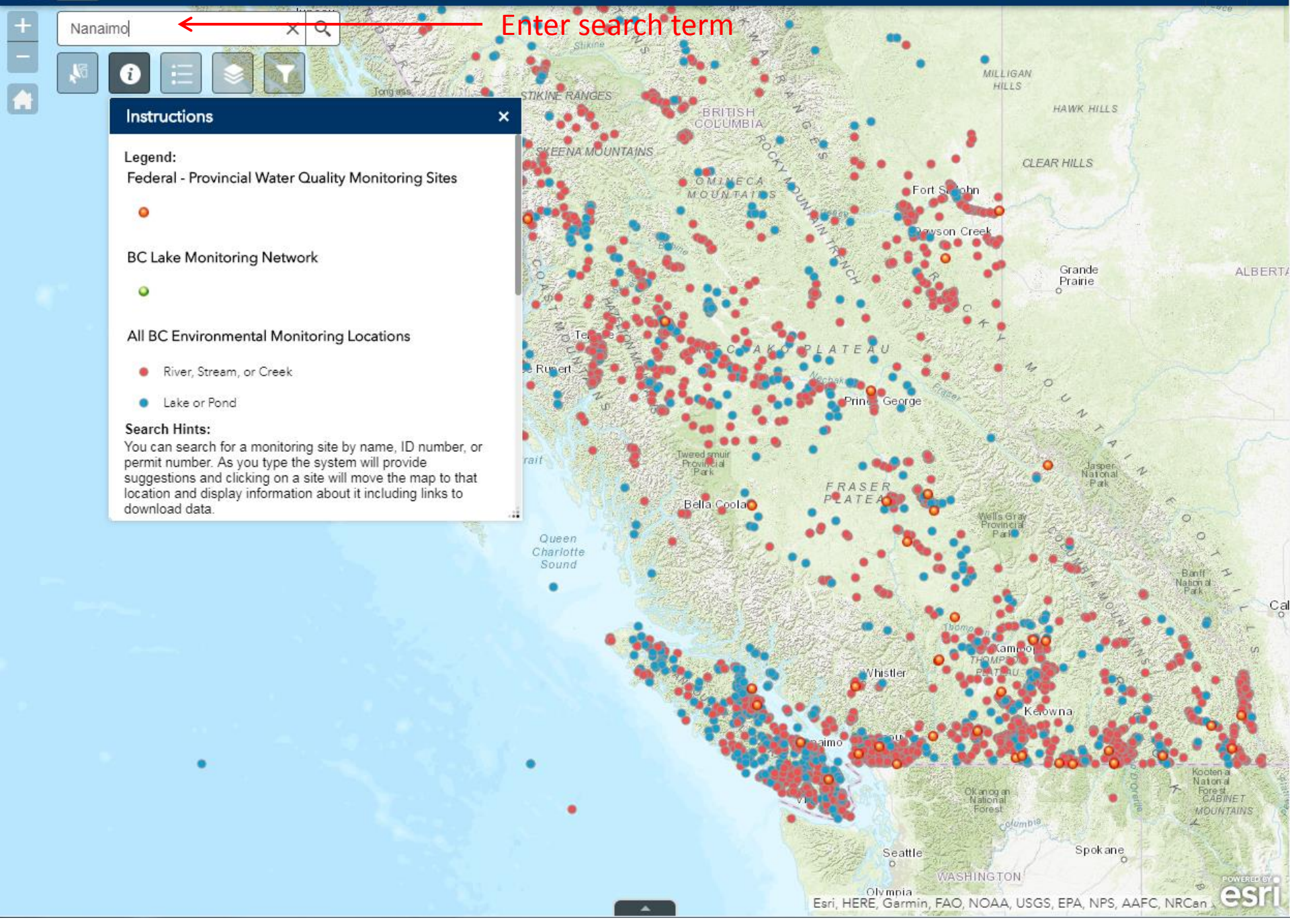
Enter search term

Instructions

Legend:

- Federal - Provincial Water Quality Monitoring Sites
- BC Lake Monitoring Network
- All BC Environmental Monitoring Locations
 - River, Stream, or Creek
 - Lake or Pond

Search Hints:
You can search for a monitoring site by name, ID number, or permit number. As you type the system will provide suggestions and clicking on a site will move the map to that location and display information about it including links to download data.



Nanaimo

- NANAIMO R. AT HIGHWAY #1
- NANAIMO SEASONAL CR AT BECK LK BELOW PR-1609
- NANAIMO, CULVERT ON CEDAR RD NW OF PR-1714
- NANAIMO RIVER SOUTH FORK
- NANAIMO RIVER AT CEDAR RD BRIDGE
- TIMBERLANDS LAKE (NANAIMO)
- NANAIMO - FIRST LAKE
- NANAIMO RIVER U/S HASLAM CK ~500 M D/S HWY 1 BRIDGE

Select from the list of results or change your search terms

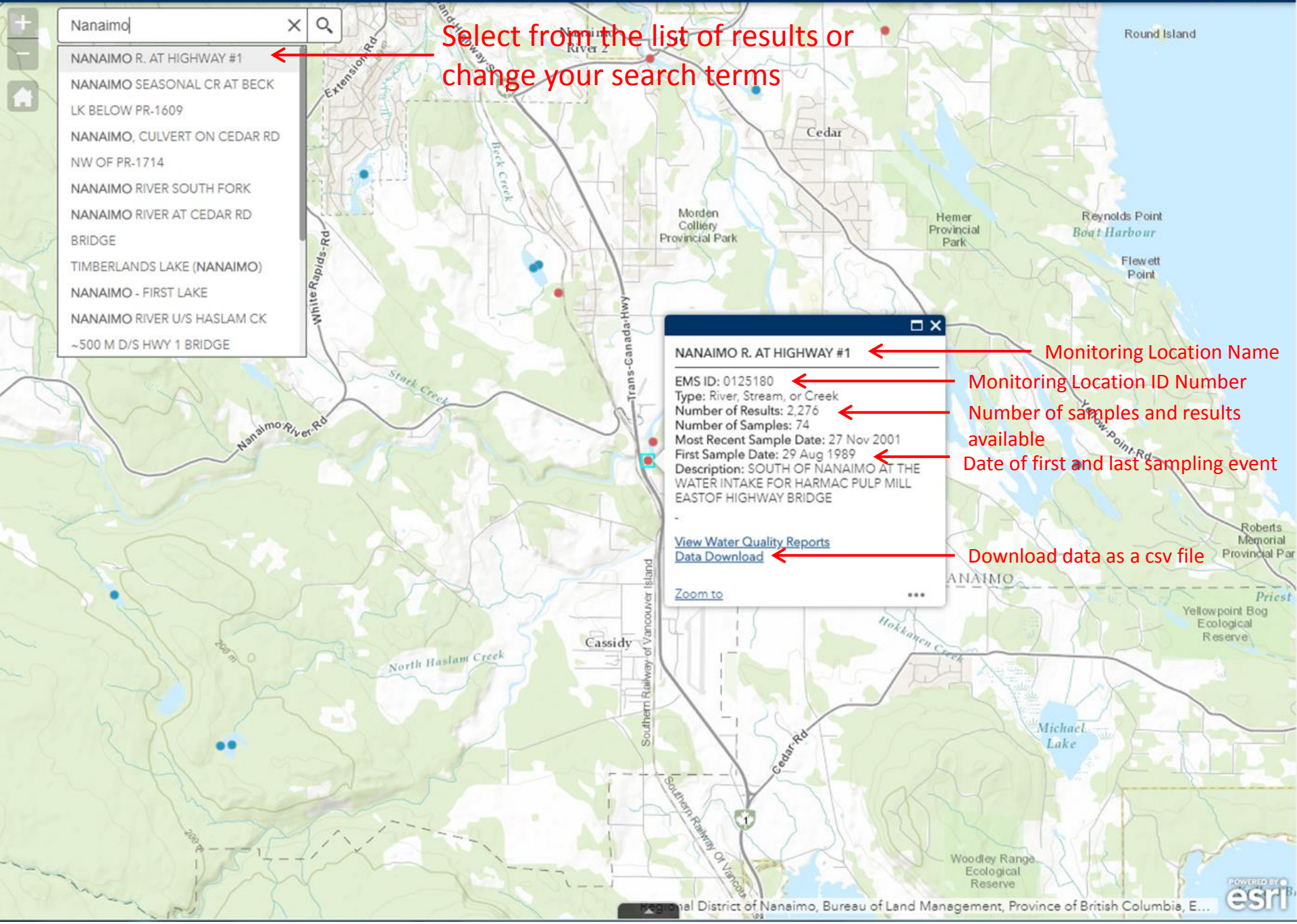
NANAIMO R. AT HIGHWAY #1

EMS ID: 0125180
Type: River, Stream, or Creek
Number of Results: 2,276
Number of Samples: 74
Most Recent Sample Date: 27 Nov 2001
First Sample Date: 29 Aug 1989
Description: SOUTH OF NANAIMO AT THE WATER INTAKE FOR HARMAC PULP MILL EAST OF HIGHWAY BRIDGE

[View Water Quality Reports](#)
[Data Download](#)

Zoom to

Monitoring Location Name
Monitoring Location ID Number
Number of samples and results available
Date of first and last sampling event
Download data as a csv file



Add or Remove Map Layers

Search for a Monitoring Site

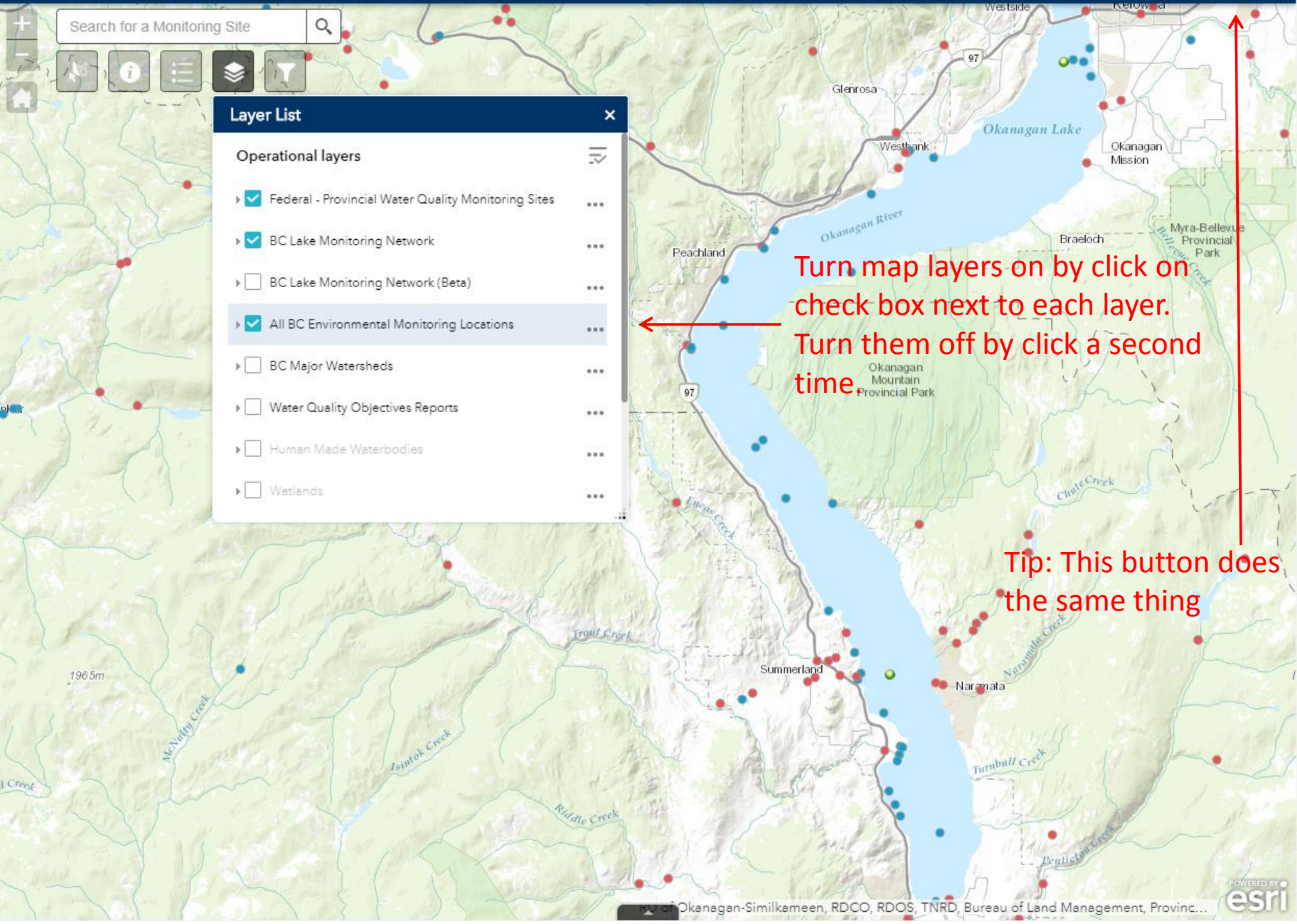
Layer List [X]

Operational layers

- Federal - Provincial Water Quality Monitoring Sites
- BC Lake Monitoring Network
- BC Lake Monitoring Network (Beta)
- All BC Environmental Monitoring Locations
- BC Major Watersheds
- Water Quality Objectives Reports
- Human Made Waterbodies
- Wetlands

Turn map layers on by click on check box next to each layer. Turn them off by click a second time.

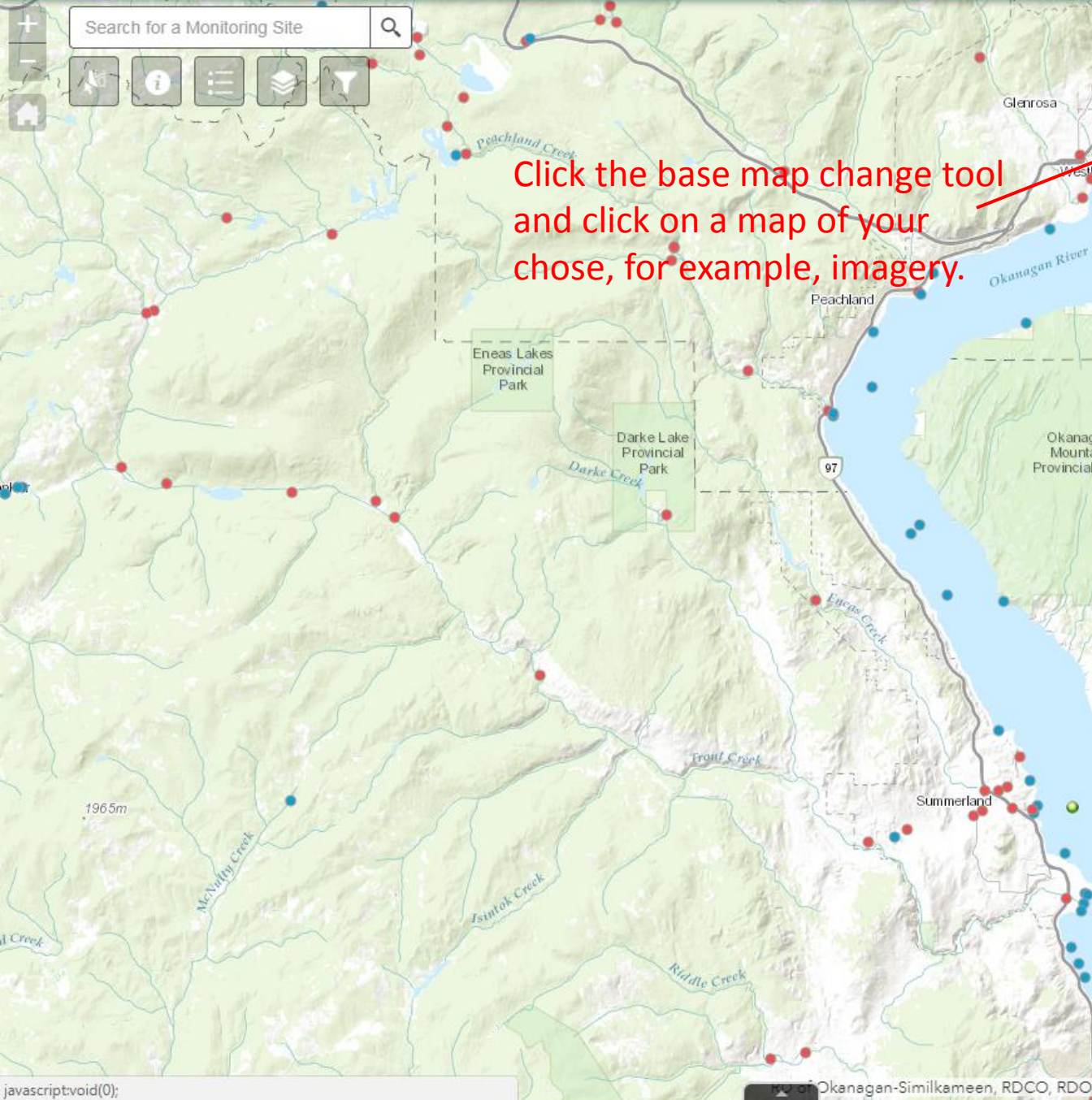
Tip: This button does the same thing



Change Base Map



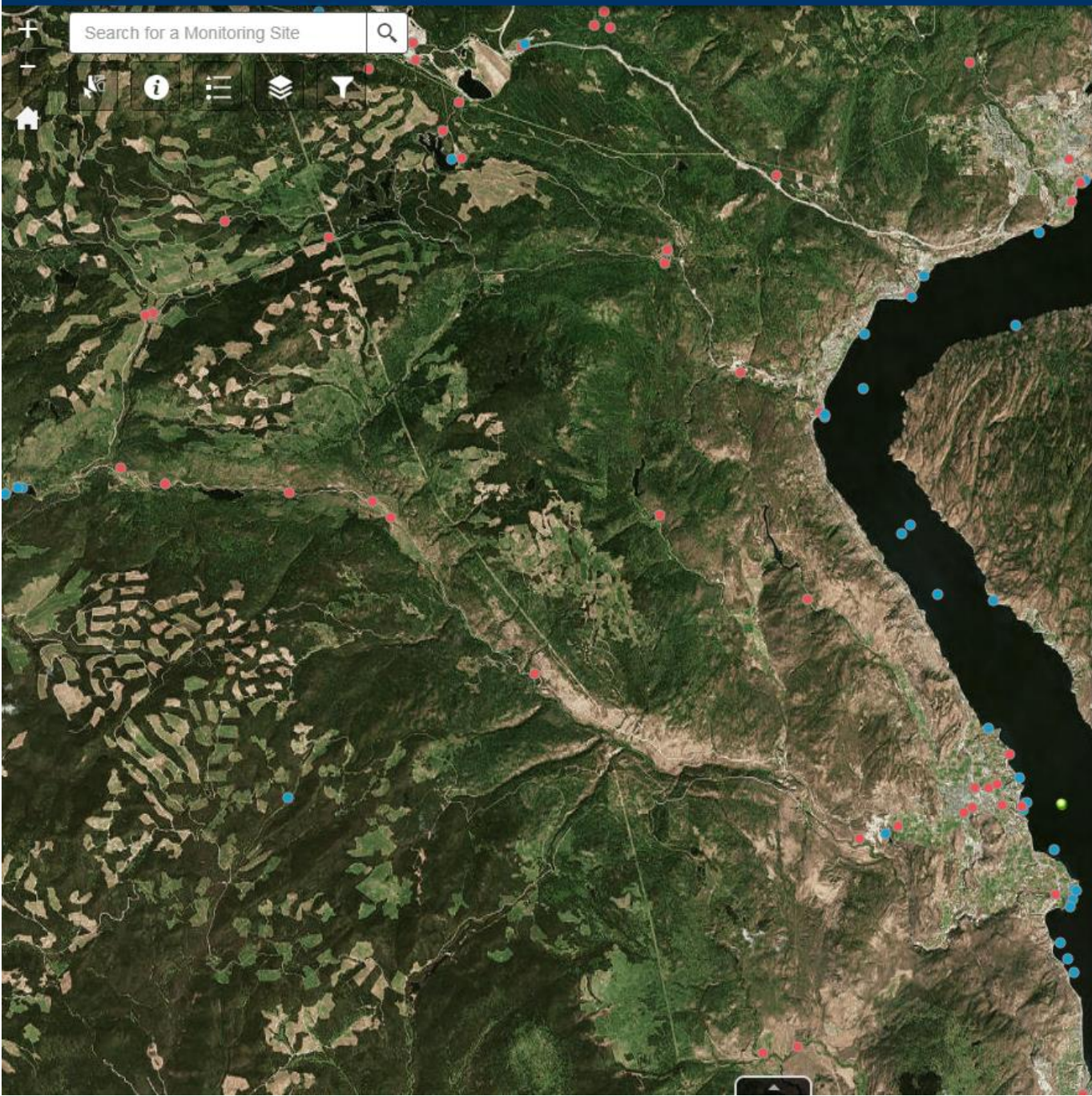
Search for a Monitoring Site



Click the base map change tool and click on a map of your chose, for example, imagery.

Basemap Gallery

- BC Provincial Basemap (Web)
- BC Provincial Roads (Web)
- Dark Gray Canvas
- Imagery**
- Imagery with Labels
- Light Gray Canvas
- National Geographic
- Oceans
- OpenStreetMap
- Streets
- Terrain with Labels
- Topographic



Search for a Monitoring Site



Basemap Gallery



BC Provincial Basemap (Web)



BC Provincial Roads (Web)



Dark Gray Canvas



Imagery



Imagery with Labels



Light Gray Canvas



National Geographic



Oceans



OpenStreetMap



Streets



Terrain with Labels



Topographic

Filter Tool

Search for a Monitoring Site



Filter [X]

Filter locations by number of results.

Number of results is greater than

Monitoring locations sampled since a date

Latest sample is on or after

Monitoring locations associated with a permit

[Filter icon]

Enter a number of results and click the slider to apply the filter

Search for a Monitoring Site

Filter [X]

Filter locations by number of results.

Number of results is greater than

Monitoring locations sampled since a date

Latest sample is on or after

Monitoring locations associated with a permit

[Filter Icon]

Now only stations with at least 50 results are visible on the map

RUSSELL SLOUGH [Close]

EMS ID: E292950
Type: River, Stream, or Creek
Number of Results: 258
Number of Samples: 3
Most Recent Sample Date: 12 Mar 2018
First Sample Date: 29 Mar 2017
Description: SW2 on permittee map; located south of new tailings pond.
[Authorization Number: 100224](#)

[View Water Quality Reports](#)
[Data Download](#)

[Zoom to](#) [More]

Search for a Monitoring Site

Filter [X]

- Filter locations by number of results. [ON]
Number of results is greater than:
- Monitoring locations sampled since a date [ON]
Latest sample is on or after:
- Monitoring locations associated with a permit [OFF]

[Filter Icon]

You can apply multiple filter at the same time.

Build your own custom filter.

Search for a Monitoring Site

Filter [X]

- Filter locations by number of results.

Number of results is greater than
- Monitoring locations sampled since a date

Latest sample is on or after
- Monitoring locations associated with a permit ← Only show those stations associated with a permit

HVC PE376 TROJAN TAILINGS POND (LAKE HAMAGUCHI) BETHLEHEM

EMS ID: E214751
 Type: Lake or Pond
 Number of Results: 858
 Number of Samples: 18
 Most Recent Sample Date: 8 Mar 2016
 First Sample Date: 28 Feb 1991
 Description: AT HIGHLAND VALLEY COPPER, SAMPLE TROJAN TAILINGS POND AT DEEP POINT.
[Authorization Number: 376](#) ← Link to environmental management act permit documents
[View Water Quality Reports](#)
[Data Download](#)
 Zoom to [...]

Selector Tool

Search for a Monitoring Site

Select

Select Clear

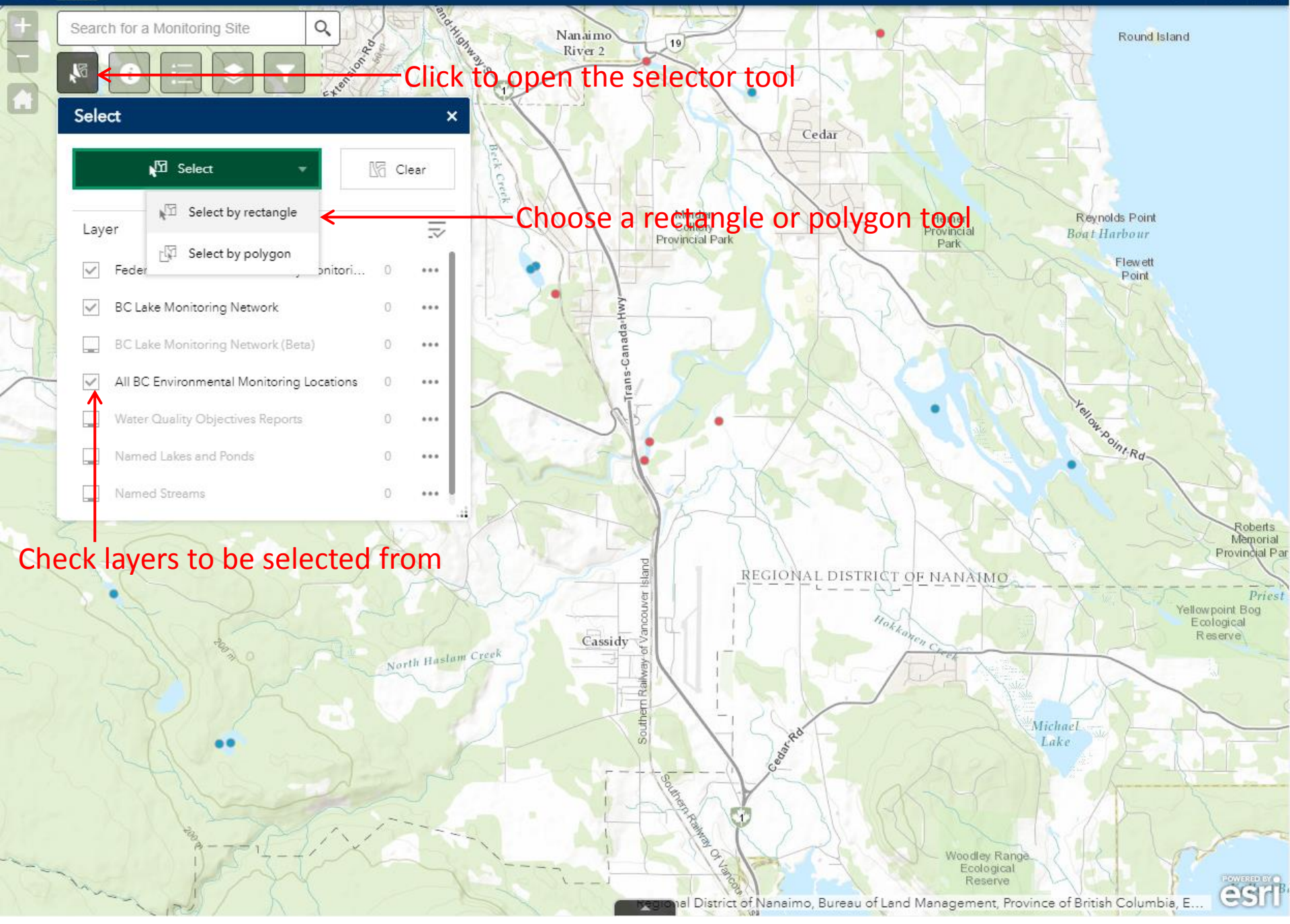
Layer

- Federal Environmental Monitoring...
- BC Lake Monitoring Network
- BC Lake Monitoring Network (Beta)
- All BC Environmental Monitoring Locations
- Water Quality Objectives Reports
- Named Lakes and Ponds
- Named Streams

Click to open the selector tool

Choose a rectangle or polygon tool

Check layers to be selected from

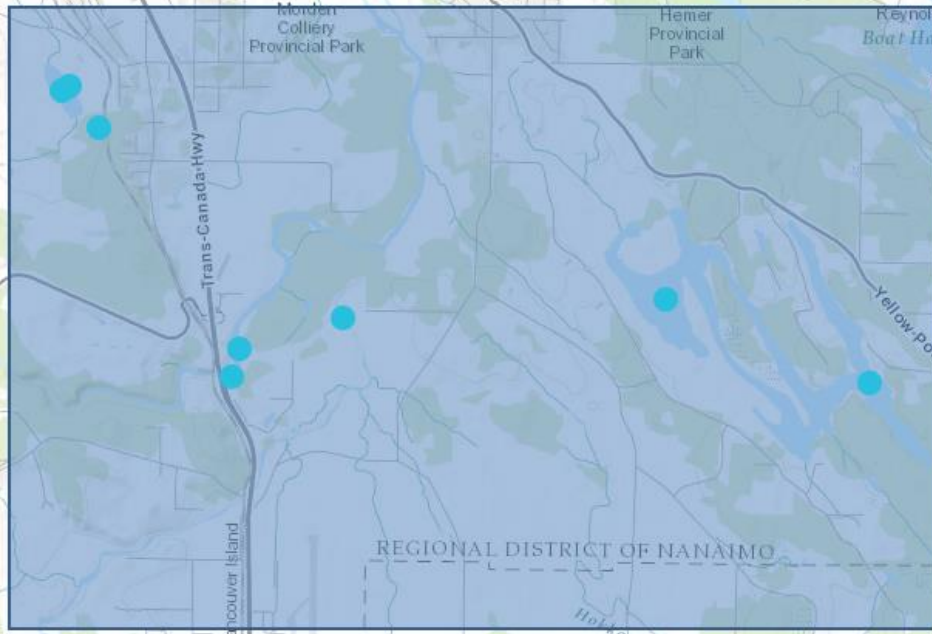


Search for a Monitoring Site

Select

Select Clear

Layer	Count	Options
<input checked="" type="checkbox"/> Federal - Provincial Water Quality Monitori...	0	...
<input checked="" type="checkbox"/> BC Lake Monitoring Network	0	...
<input type="checkbox"/> BC Lake Monitoring Network (Beta)	0	...
<input checked="" type="checkbox"/> All BC Environmental Monitoring Locations	8	...
<input type="checkbox"/> Water Quality Objectives Reports	0	...
<input type="checkbox"/> Named Lakes and Ponds	0	...
<input type="checkbox"/> Named Streams	0	...



Eight sites are within the box

Click and drag to draw a box

Press down to start and let go to finish

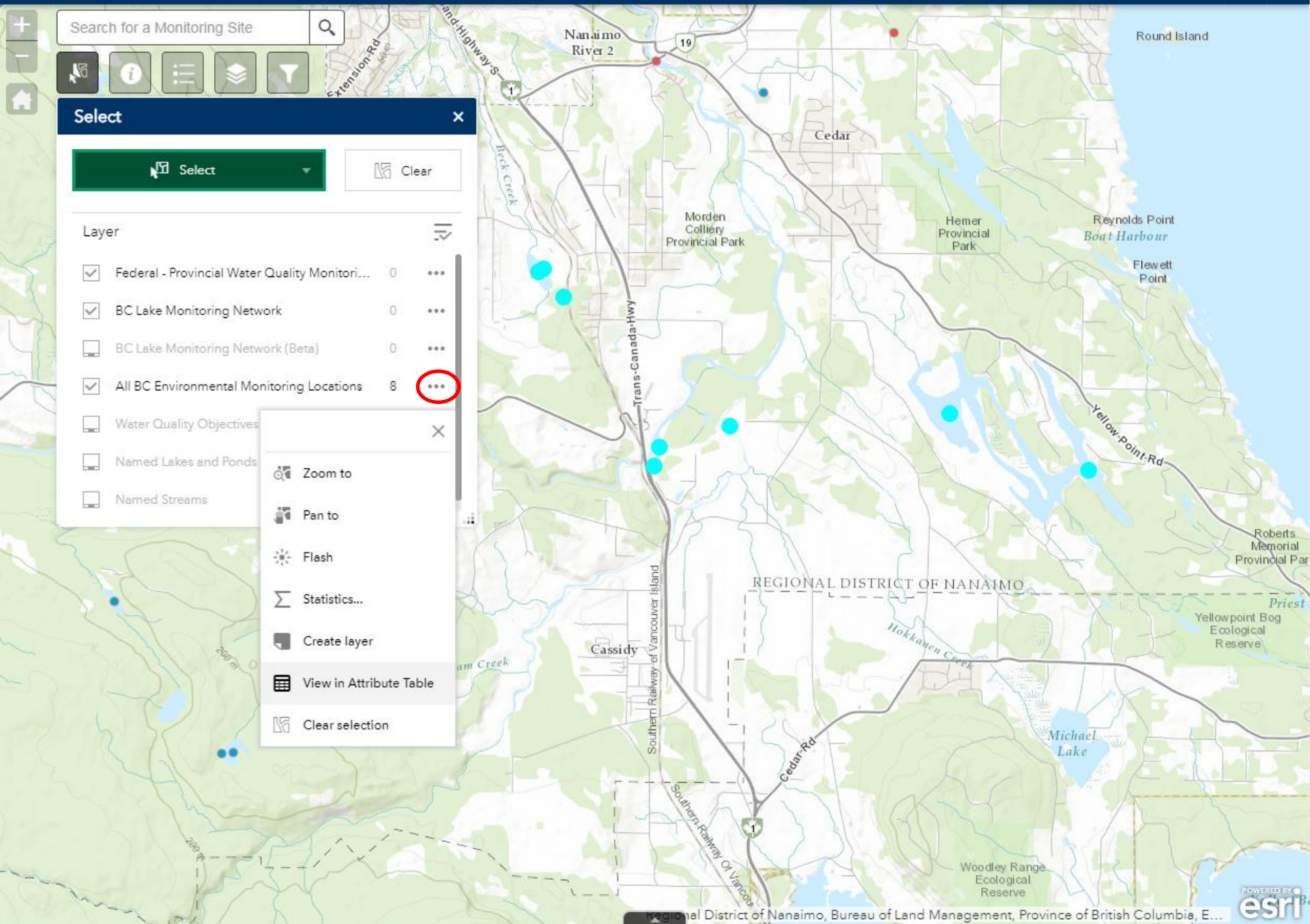
Search for a Monitoring Site

Select

Select Clear

- Layer
- Federal - Provincial Water Quality Monitori... 0 ...
 - BC Lake Monitoring Network 0 ...
 - BC Lake Monitoring Network (Beta) 0 ...
 - All BC Environmental Monitoring Locations 8 ...
 - Water Quality Objectives X
 - Named Lakes and Ponds
 - Named Streams

- Zoom to
- Pan to
- Flash
- Statistics...
- Create layer
- View in Attribute Table
- Clear selection



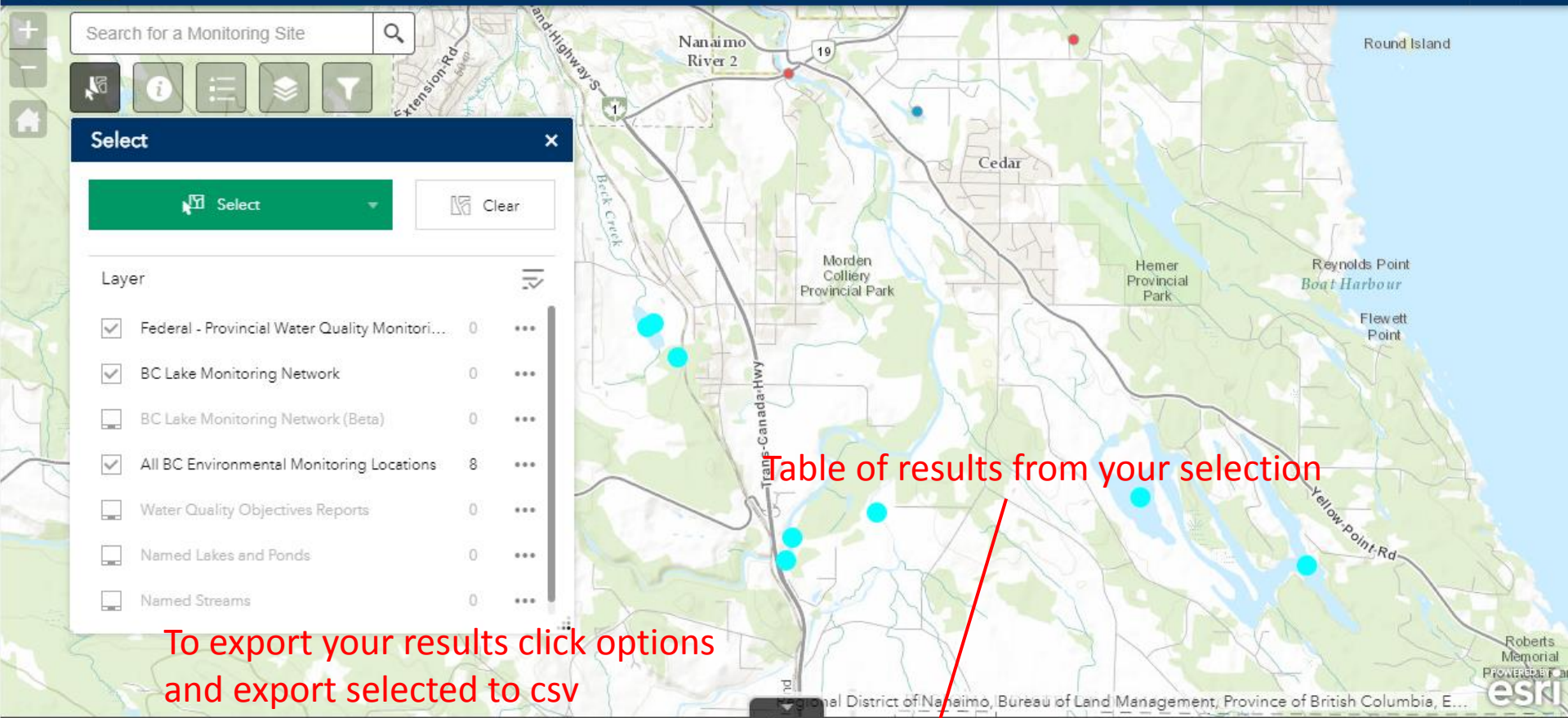


Table of results from your selection

To export your results click options and export selected to csv

Federal - Provincial Water Quality Monitoring Sites | BC Lake Monitoring Network | All BC Environmental Monitoring Locations | Water Quality Objectives Reports

Options | Filter by map extent | Zoom to | Clear selection | Refresh

- Show selected records
- Show related records
- Filter
- Show/Hide columns
- Export selected to CSV

GEOMEC	Location Type	WATERSHED_CD	DESCRIPTION	EMS Location Name	Latitude	Longitude	Date Established	MONITORING_LC	SOURCE_CLASS	FIRST_SAMPLE_D
	21		SOUTH OF NANAIMO AT THE WATER INTAKE FOR HARMAC PULP MILL EAST OF HIGHWAY BRIDGE	NANAIMO R. AT HIGHWAY #1	49.07	123.88	11/30/1984, 12:00 AM			29 Aug 1989
0127312	21		AT BRIDGE NEAR COAL SLAG PILE	NANAIMO SEASONAL CR AT BECK LK	49.09	123.89	11/30/1984, 12:00 AM			30 Apr 1980