

INVASIVE SPECIES ALERT!

Giant salvinia (*Salvinia molesta*)

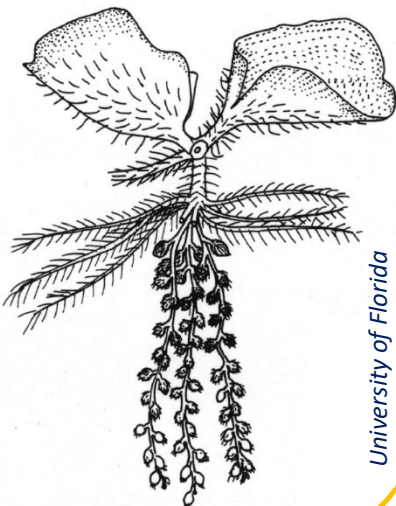
HAVE YOU SEEN THIS PLANT?

DESCRIPTION

- Native to Brazil and Argentina.
- Behaves as an annual in non-tropical climates.
- Free-floating aquatic fern, with dangling 3rd leaf that resembles hairy, submerged, horizontal rhizomes (10 cm long).
- Leaf fronds in whorls of three: two oblong floating leaves (1.25cm x 2.5cm) and one submerged.
- Young plants have small leaves that lie flat on the water surface. Mature matted plant leaves are light to medium green with folded centres and compressed into upright chains.
- Velvety leaf surface with rows of cylindrical hairs that join at tips to form an “egg-beater or cage-like” structure for buoyancy.
- Appears similar but bigger than native duckweed (*Lemna minor*)
- Underwater root-like structure conceals egg-shaped infertile spore sacs.

PRIMARY THREAT: Form dense, mats degrading aquatic ecosystems, water quality, recreation, and impeding water flow.

Giant salvinia single plant



BIOLOGY & SPREAD

- Reproduces by vegetative growth and sporadic fragmentation (up to 5 lateral buds at one node).
- May reach a density of 30, 000 small plants per metre square;
- Local dispersal by water currents, boats, or wildlife

HABITAT

- Readily colonizes disturbed or pristine freshwater and brackish waterways, including lakes, rivers, wetlands, estuaries, ditches, sloughs, and hydro electric facilities.



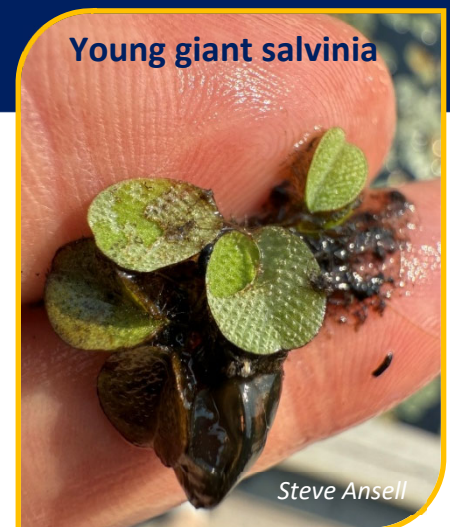
REPORT INVASIVE SPECIES

Download the App!

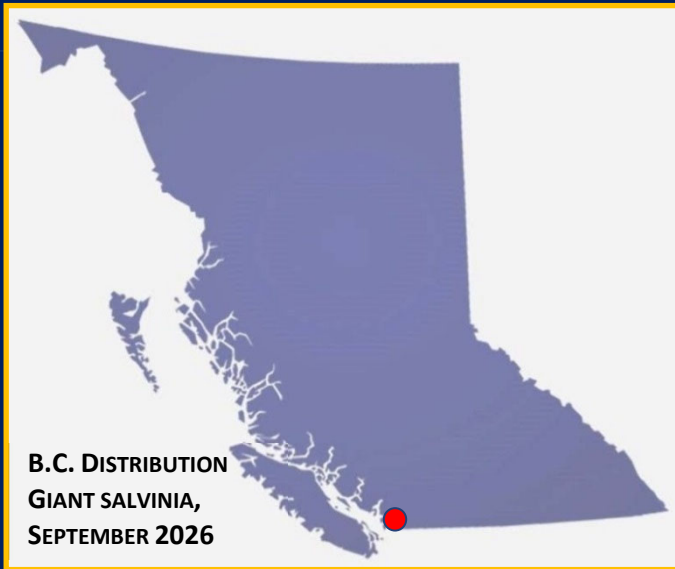


www.gov.bc.ca/invasive-species

Young giant salvinia



Giant salvinia (*Salvinia molesta*)



DISTRIBUTION & Status

- Management goal is provincial eradication.
- Single occurrence in Canada in Metro Vancouver.



REPORT INVASIVE SPECIES

Download the App!



www.gov.bc.ca/invasive-species

DID YOU KNOW?

- Giant salvinia plant structure can vary depending on space and nutrient availability.

WHAT CAN YOU DO?

- **Learn** to identify
- **REPORT** new sightings
- **Purchase & Trade** *non-invasive* plants

Giant salvinia monoculture



For more information:

<https://www2.gov.bc.ca/gov/content?id=ECF57097F729403A8F2A464EBF09B7FE>

