

Rodent Control: Summary of Best Management Practices for Residents

Introduction

This document provides a summary of a more detailed publication, [Integrated Pest Management for Rodents: A Guide for Residents](#). It is intended to introduce the issue and provide practical first steps in managing rodents around the home. Those interested in more information should check out the full document.

Why Use Integrated Pest Management?

An Integrated Pest Management (IPM) approach is a safe and effective way to manage rodents (rats and mice) by addressing root causes of infestation. This method focuses on preventing rodents from entering your home, closely monitoring any activity, using traps and alternatives to pesticides, and only using chemical treatments when necessary. IPM is an excellent way to minimize health and environmental risks.

A typical IPM program has the following steps:

1. PREVENTION

Start with prevention to keep rodents from becoming a problem (see illustration for tips):

- **Seal Entry Points:** Close any gaps, cracks, and holes in walls, doors, windows, and around pipes or wiring to block access.
- **Manage Food Sources:** Store food, pet food, and birdseed in sealed containers. Clean up crumbs and spills and ensure trash cans are tightly closed.
- **Eliminate Water Sources:** Fix leaks and remove standing water from outdoor containers to discourage nesting nearby.

- **Declutter:** Remove yard debris, excess vegetation, and indoor clutter where rodents could hide or nest.

2. IDENTIFICATION

Identify the rodent type to tailor control methods:

- **House Mouse:** Small, light brown or gray, with large ears.
- **Norway Rat:** Larger, stocky body, often found near ground level.
- **Roof Rat:** Slimmer with a long tail, often found in attics.

3. MONITORING

Regular checks help catch early signs of activity:

- **Inspect Regularly:** Look for droppings, gnaw marks, or nests in high-risk areas like basements, garages, and kitchens.
- **Use Monitoring Tools:** Traps (both lethal and non-lethal) can assess rodent presence.
- **Track Patterns:** Record rodent signs to better understand activity and areas needing attention.

4. THRESHOLD

Set tolerance levels to know when control actions are necessary:

- **Health Risks:** Act on any signs in food preparation or storage areas.
- **Establish Levels:** Tolerance for rodents in or around your home should be low to prevent infestation. A few signs outside may not require treatment, but any signs inside the home should prompt action.

Rodent Control: Best Management Practices for Residents

5. TREATMENT

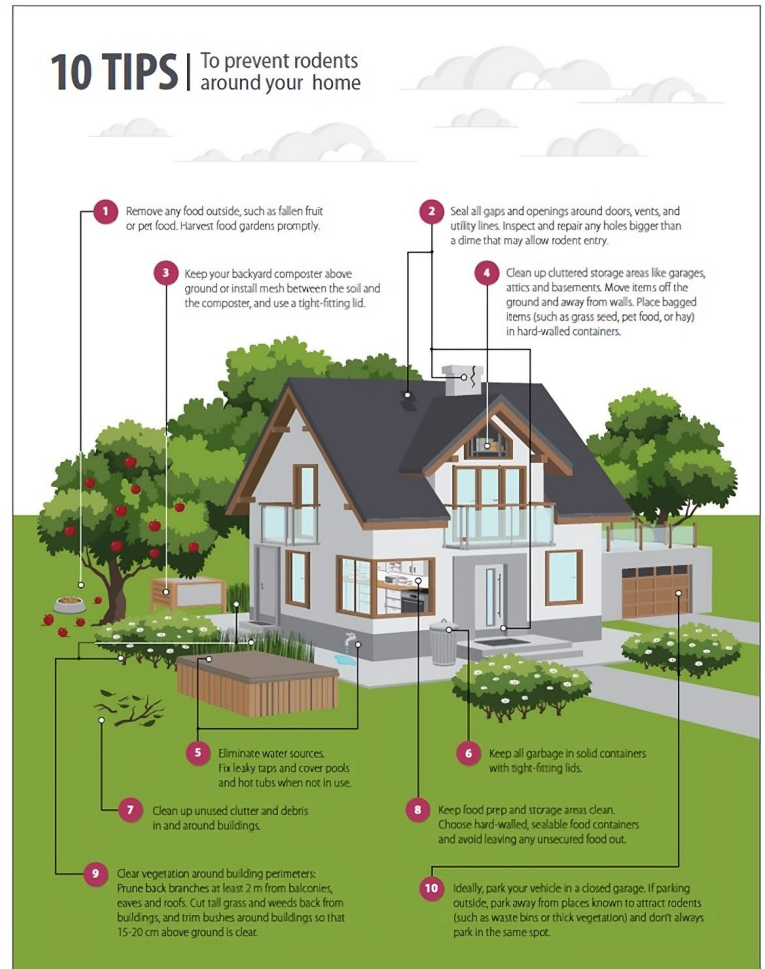
If prevention and monitoring indicate a need for treatment, follow these steps:

- **Reinforce Prevention First:** Start by sealing entry points and removing food, water, and shelter sources. Trapping or baiting alone won't solve the problem without these foundational steps.
- **Select the Best Method:** Choose options that are effective for the rodent type, population, and location, while keeping people, pets, and wildlife safe.
- **Use Traps as Primary Control:** After exclusion and cleanup, use traps (snap or electronic) to safely remove any remaining rodents.
- **Consider Professional Help:** If hiring a professional, discuss non-pesticide options and ensure they focus on exclusion and prevention. Service companies are required to address prevention and exclusion when considering pesticide use.

6. EVALUATION

Regularly assess the effectiveness of your rodent control measures:

- **Check Results:** After implementing treatments, monitor for signs of rodent activity and adjust as needed.
- **Document Your Actions:** Keep records of prevention steps, sightings, and treatments to refine your IPM approach.
- **Update Prevention:** Reinforce preventive measures over time to keep your home rodent-free.



STAY RODENT-FREE

By following these IPM steps, homeowners can effectively manage rodents while protecting human health, pets, wildlife, and the environment.

Prevention is key—keeping a clean, sealed, and clutter-free environment is the most sustainable solution to prevent rodents from returning.

For detailed version of guidance on rodent control in residential settings, visit:

https://www2.gov.bc.ca/assets/gov/environment/pesticides-and-pest-management/legislation-consultation-new/bmp_rodent_ipm_for_public.pdf