



# Priority Invasive and Migratory Insects to Report BRITISH COLUMBIA



Insects to watch for and report by anyone interacting with insects. Use the QR CODE to report all observations, including species **regulated by the Canadian Food Inspection Agency (CFIA)**.



## Spotted lanternfly, *Lycorma delicatula*

Hosts: Tree of heaven, grapevine, various (fruit) trees and shrubs

**Not present in Canada / CFIA REGULATED**



## Asian longhorned beetle, *Anoplophora glabripennis*

Hosts: Deciduous trees

**Not present in Canada / CFIA REGULATED**

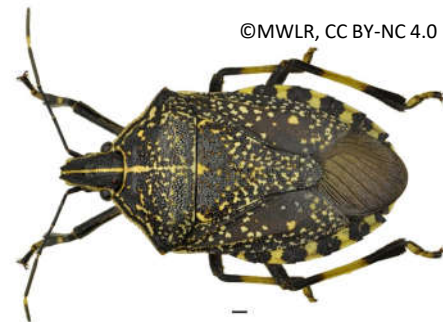


## Northern giant hornet, *Vespa mandarinia*

Threat to native bees and honeybee hives

Aggressive with painful sting

**Not present in Canada**



## Yellow-spotted stink bug, *Erthesina fullo*

Hosts: Fruits, vegetables, and ornamental plants

**Not present in Canada**

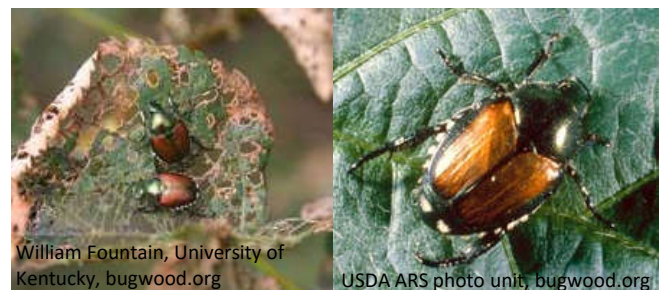


## Spongy moth, *Lymantria dispar*

Hosts: Oak, maple, beech, willow, apple, plum

**Not established in BC**

**CFIA REGULATED**



## Japanese beetle, *Popillia japonica*

Hosts: Turf, fruits, vegetables, ornamentals

**Limited distribution in B.C.: Lower Mainland only**

**CFIA REGULATED**



# Priority Invasive and Migratory Insects to Report BRITISH COLUMBIA



Insects to watch for and report by anyone interacting with insects. Use the QR CODE to report all observations, including species **regulated by the Canadian Food Inspection Agency (CFIA)**.

Szabolcs Sáfián, University of West Hungary, Bugwood.org

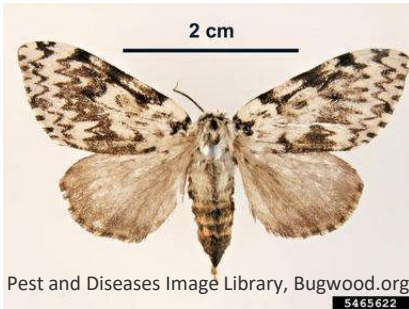


**Box tree moth, *Cydalima perspectalis***  
Hosts: Boxwood shrubs (*Buxus* spp.)  
**Not present in BC / CFIA REGULATED**

Pest and Diseases Image Library, Bugwood.org



**Siberian silk moth, *Dendrolimus sibiricus***  
Hosts: Coniferous trees  
**Not present in Canada**



**Nun moth, *Lymantria monacha***  
Hosts: Mainly coniferous trees  
**Not present in Canada / CFIA REGULATED**



**Tomato leafminer, *Tuta (Phthorimaea) absoluta***  
Hosts: Tomato, other Solanaceae  
**Not present in Canada / CFIA REGULATED**



**Rosy tussock moth, *Lymantria mathura***  
Hosts: Oak, beech, fruit trees  
**Not present in Canada**  
**CFIA REGULATED**



**European cherry fruit fly, *Rhagoletis cerasi***  
Hosts: Cherry varieties and wild honeysuckle  
**Not present in BC**  
**CFIA REGULATED**