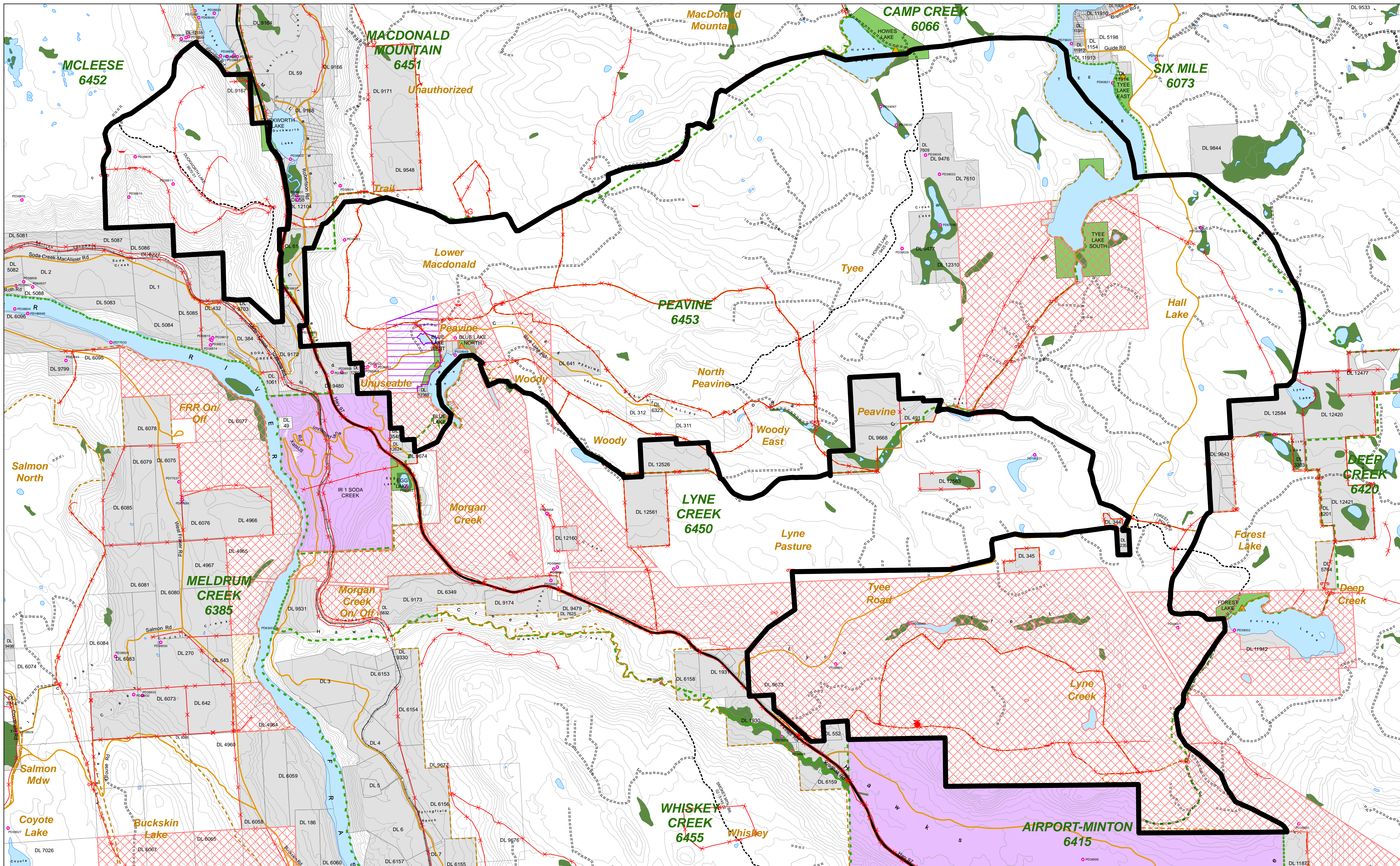


# Range Tenure RAN076634 (DUNLEVY RANCH LTD.) Overlap with or Adjacent to NStQ Proposed AIP Lands



**NStQ Treaty**

- Proposed AIP Lands
- ITA LANDS - Phase 1 Land Transfer
- ITA LANDS - Phase 2 Land Transfer

**Planning Information**

- Pastures
- Range Unit Boundary
- WHA - Approved
- Sensitive Area
- Point of Diversion
- Recreation Sites
- Grazing Lease
- Other Lease
- Indian Reserves
- Wetland
- Private Land
- Provincial Parks, Conservancies, Eco Reserves, etc.
- Open Range

**Range Improvement Features**


- Cattleguard
- Gate
- Corral
- Crossing
- Exclosure
- Salt
- Gully Plug
- Cabin
- Water Development
- Other
- Fence

**Transportation**

- Oil or Gas Pipeline
- Powerlines
- Railway
- Highway
- Public
- FSR Tenures
- Road Permit Tenures
- Non-status Roads

**Forest Age**

- 0 to 5 Years
- 6 to 30 Years

0 0.5 1 1.5  
 Kilometers  
  
 1:30,000 at ANS D  
 NAD 1983 UTM Zone 10N