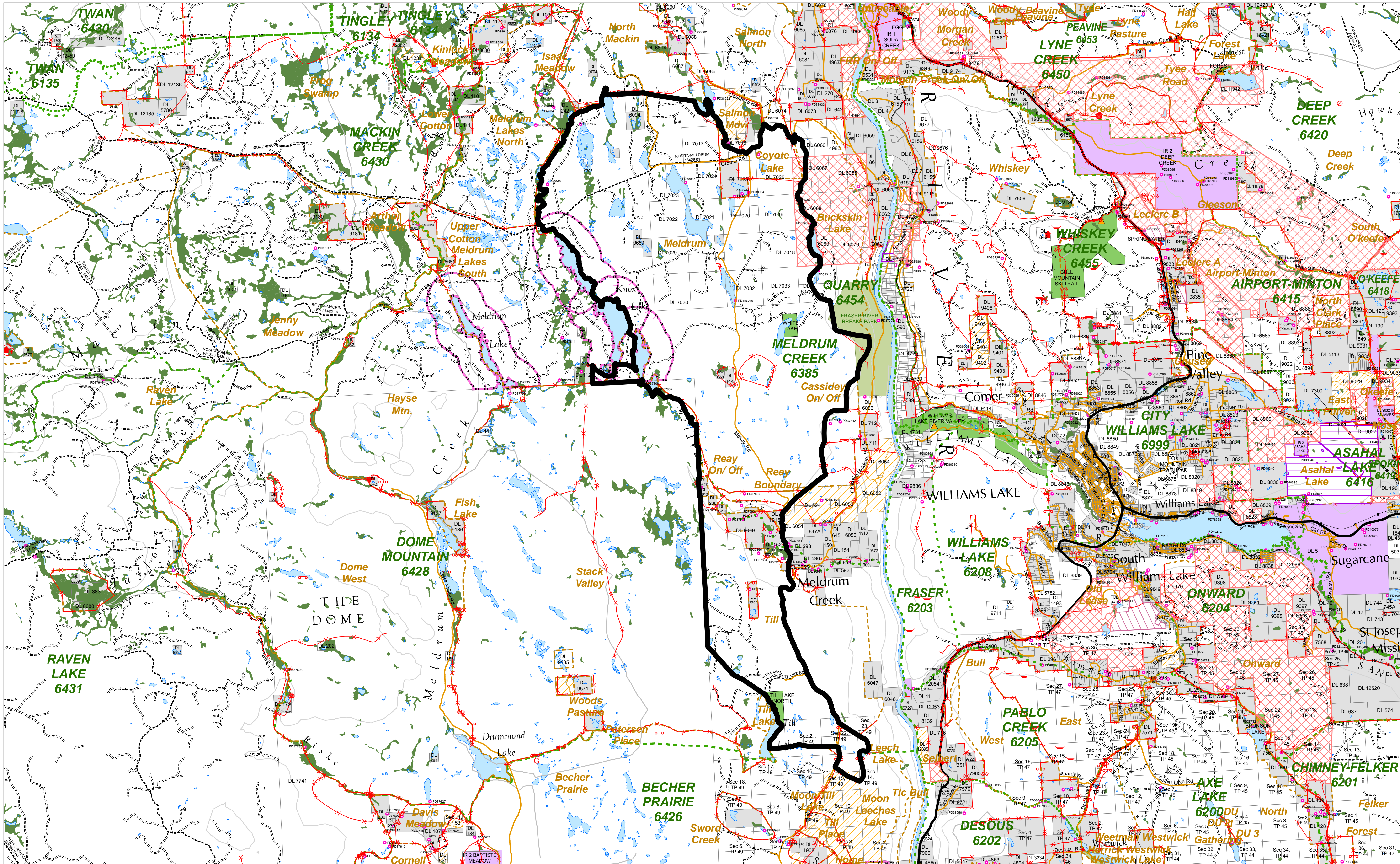


Range Tenure RAN076385 (THE BLUE GOOSE CATTLE COMPANY LTD.) Overlap with or Adjacent to NStQ Proposed AiP Lands

- NStQ Treaty**
- Proposed AiP Lands
 - ITA LANDS - Phase 1 Land Transfer
 - ITA LANDS - Phase 2 Land Transfer
- Planning Information**
- Pastures
 - Range Unit Boundary
 - WHA - Approved
 - Sensitive Area
 - Point of Diversion
 - Recreation Sites
 - Grazing Lease
 - Other Lease
 - Indian Reserves
 - Wetland
 - Private Land
 - Provincial Parks, Conservancies, Eco Reserves, etc.
 - Open Range
- Range Improvement Features**
- Gate
 - Corral
 - Crossing
 - Exclosure
 - Salt
 - Gully Plug
 - Cabin
 - Water Development
 - Other
 - Fence
- Transportation**
- Oil or Gas Pipeline
 - Powerlines
 - Railway
 - Highway
 - Public
 - FSR Tenures
 - Road Permit Tenures
 - Non-status Roads
- Forest Age**
- 0 to 5 Years
 - 6 to 30 Years



0 0.5 1 1.5 2 2.5
Kilometers



1:80,000 at ANSI D
NAD 1983 UTM Zone 10N