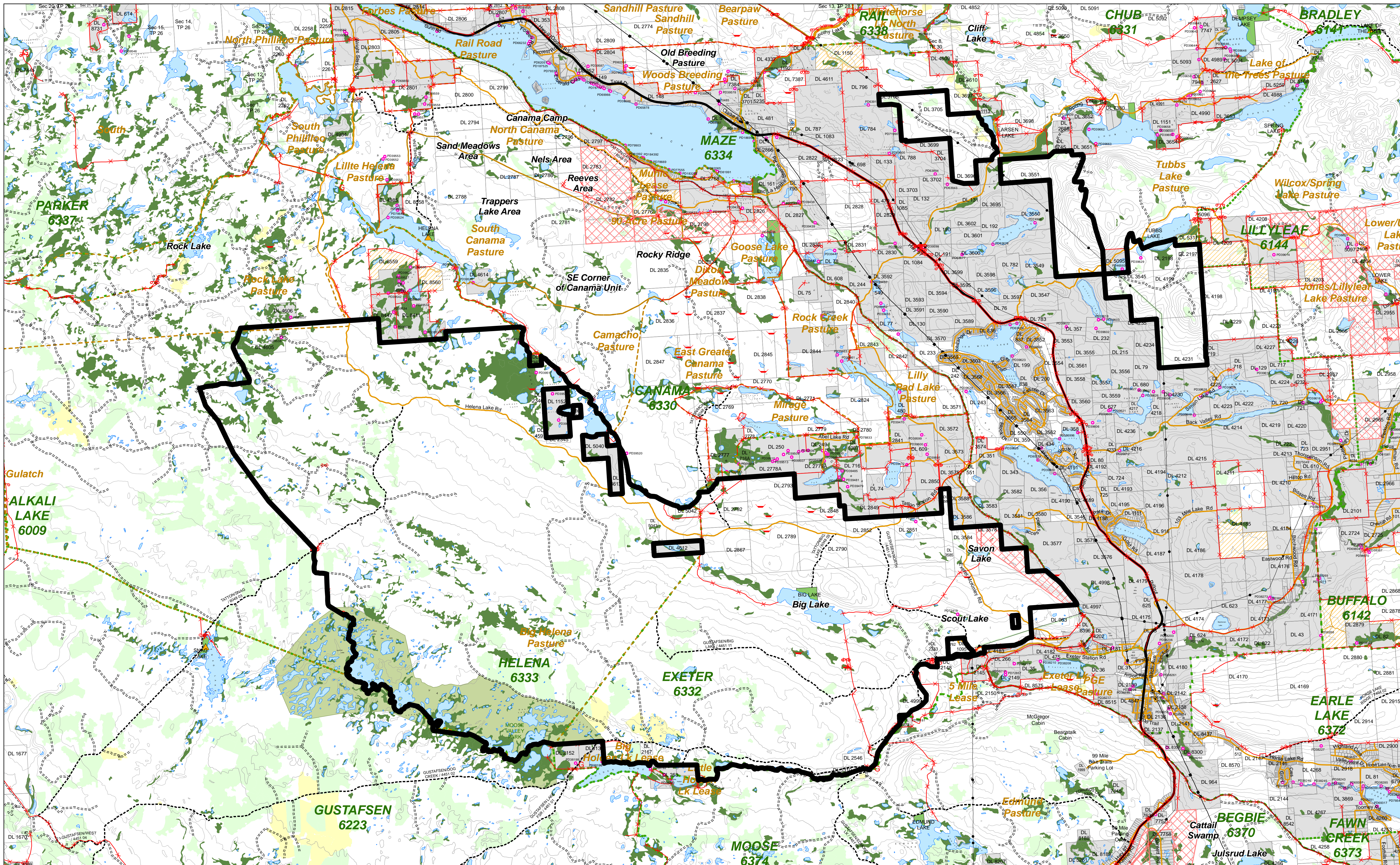


# Range Tenure RAN076020 (THE BLUE GOOSE CATTLE COMPANY LTD.) Overlap with or Adjacent to NStQ Proposed AiP Lands



- NStQ Treaty**
- Proposed AiP Lands
  - ITA LANDS - Phase 1 Land Transfer
  - ITA LANDS - Phase 2 Land Transfer
- Planning Information**
- Pastures
  - Range Unit Boundary
  - WHA - Approved
  - Sensitive Area
  - Point of Diversion
  - Recreation Sites
  - Grazing Lease
  - Other Lease
  - Indian Reserves
  - Wetland
  - Private Land
  - Provincial Parks, Conservancies, Eco Reserves, etc.
  - Open Range
- Range Improvement Features**
- Cattleguard
  - Gate
  - Corral
  - Crossing
  - Exclosure
  - Salt
  - Gully Plug
  - Cabin
  - Water Development
  - Other
  - Fence
- Transportation**
- Oil or Gas Pipeline
  - Powerlines
  - Railway
  - Highway
  - Public
  - FSR Tenures
  - Road Permit Tenures
  - Non-status Roads
- Forest Age**
- 0 to 5 Years
  - 6 to 30 Years

