

Design Criteria for Batter Board Panels

Design Criteria for Batter Board Panels on Okanagan Lake

Pursuant to Section 39(1)(d) of the *Water Sustainability Regulation* under *Water Sustainability Act* (WSA) [1], the construction, maintenance or removal of a pier or wharf in a stream is categorized as an “authorized change” if the ebb and flow of water and the movement of material under the influence of waves or currents is not obstructed. As per WSA, an authorized change requires a Notification to FLNRORD. If the above condition is not satisfied, a “Change Approval” under WSA Section 11 “Changes in and About a Stream” will apply to the proposed construction, maintenance or removal of a pier or wharf. Due to the critical nature of Red and Black zone shore spawning Kokanee sites we recommend you contact the Ecosystems Section head in Penticton prior to submitting a Change Approval application as it is very unlikely that a variance to the design criteria will be accepted within these zones.

Summary

The following provides instructions for Section 39(1)(d) of the *Water Sustainability Regulation* as guidance for a batter board panel installed on a pile-supported fixed dock on Okanagan Lake.

A proposed batter board panel can be considered to have an acceptable impact on the ebb and flow of water and the movement of material under the influence of waves or currents, if all of the following conditions are met:

General Requirement for All Zones

- a) at most one horizontal board is used in the panel;
- b) no diagonal board is used in the panel;
- c) the width of the horizontal board ≤ 0.152 m (6”);
- d) bottom elevation of the horizontal board is 342.413 m or higher;
- e) vertical boards are spaced uniformly with a gap between two adjacent boards ≥ 0.61 m (24”);
- f) the gap between a vertical board and any pile is at least 0.61 m (24”);
- g) the width of the vertical boards ≤ 0.127 m (5”);
- h) the bottom elevation the vertical boards is 342.211 m or higher; and
- i) the boards are as thin as possible, with a maximum thickness of 0.051 m (2”).

Red Zones

In Addition to the General Requirements listed above, the following requirements also apply for Red and Black Shore Spawning Zones

- j) only one batter board panel is installed onto the dock
- k) maximum length of the panel in a red or black zone Kokanee shore spawning site is 8 meters;
- l) Batter boards must not be installed in depths of <1.5 m of water at low water

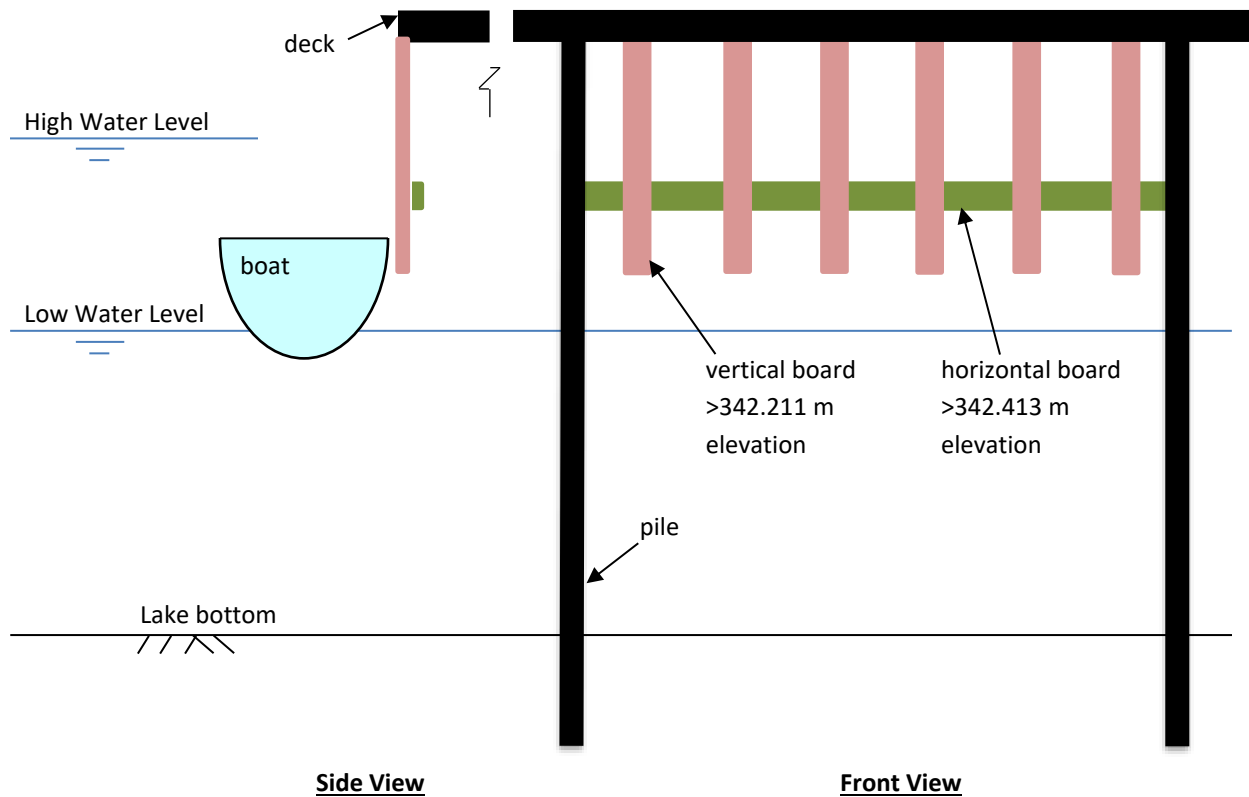


Figure 1. A Typical Batter Board Panel Installed at a Dock