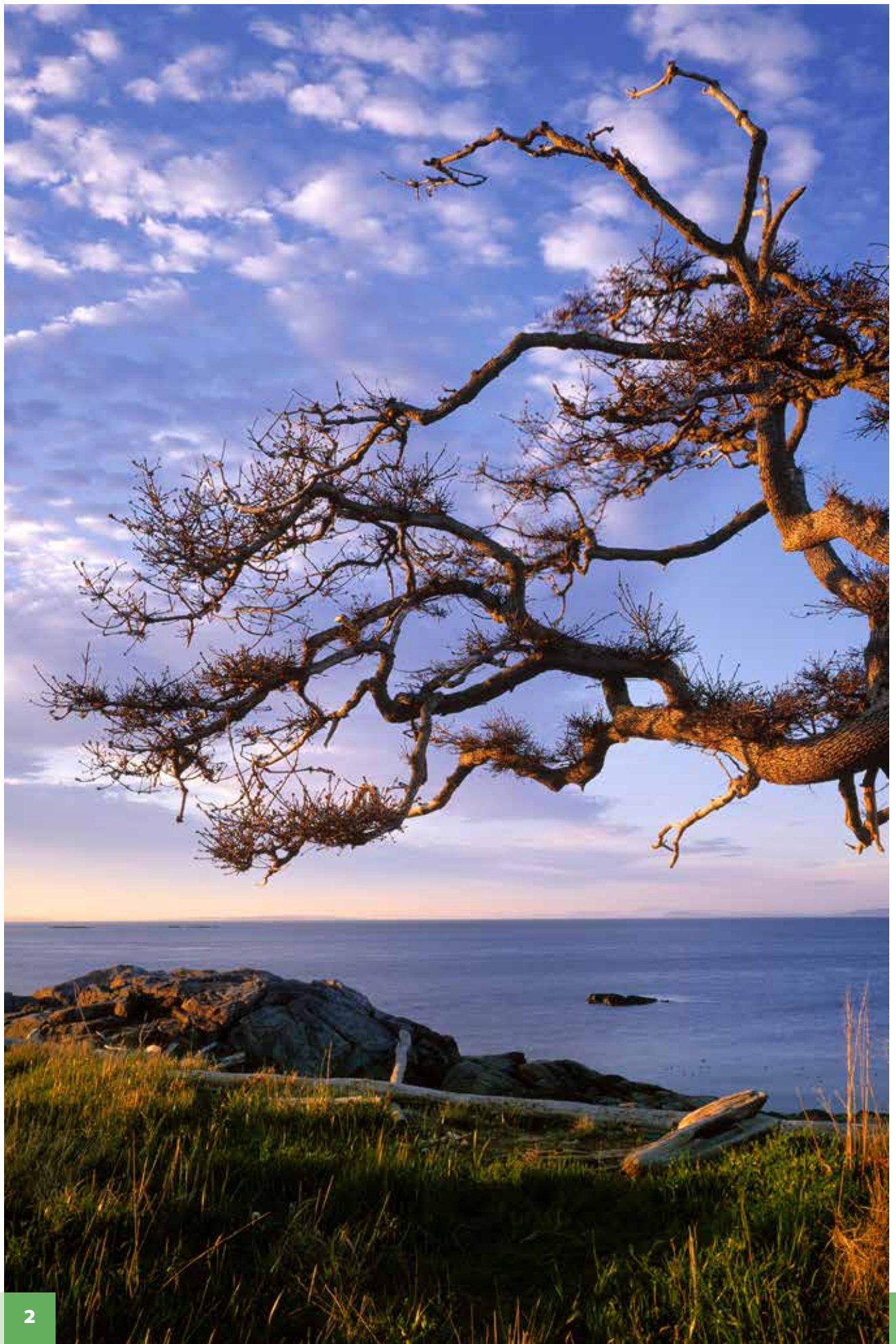


CARBON NEUTRAL GOVERNMENT

YEAR IN REVIEW **2013**



BRITISH
COLUMBIA



Contents

MESSAGE FROM THE MINISTER.....	5
BRITISH COLUMBIA'S PUBLIC SECTOR BY THE NUMBERS.....	6
WHERE ARE OUR EMISSIONS COMING FROM?	8
SCHOOL DISTRICTS.....	10
HEALTH AUTHORITIES	12
CROWN CORPORATIONS	14
UNIVERSITIES AND COLLEGES	16
CORE GOVERNMENT	18
THE CARBON NEUTRAL STORY	20
VERIFICATION.....	24
APPENDIX	25



*"Carbon Neutral Government demonstrates **concrete leadership** on climate action, **saves energy costs** for the provincial public sector and results in **investments throughout B.C.**"*

Message from the Minister



2013 MARKS THE FOURTH CONSECUTIVE YEAR THAT BRITISH COLUMBIA HAS ACHIEVED CARBON NEUTRALITY

across its provincial public sector. I'm extremely proud of this accomplishment, and our government is committed to continuing on this leadership path for many years to come.

B.C. was the first jurisdiction in North America to achieve carbon neutrality in 2010, and remains the only carbon neutral province or state on the continent.

Carbon Neutral Government demonstrates concrete leadership on climate action, saves energy costs for the provincial public sector and results in investments throughout B.C. in greenhouse gas emission reduction projects that are driving the creation of a low-carbon economy.

Throughout this report, we highlight success stories from a number of provincial public-sector organizations in their efforts to reduce their carbon footprint, save energy costs and innovate in the delivery of public services.

I believe these examples demonstrate that environmental excellence does not have to come at the expense of the economy – in fact, what we are seeing in B.C. is that the two can coexist and mutually support each other. I hope the stories contained here inspire individuals, businesses and other levels of government to join us in becoming carbon neutral.

A stylized, handwritten signature in black ink that reads "Mary Polak". The signature is fluid and cursive, with a horizontal line extending from the end of the name.

The Honourable Mary Polak
MINISTER OF ENVIRONMENT

British Columbia's Public Sector by the Numbers

2013 EMISSIONS AT A GLANCE: B.C.'s Public Sector

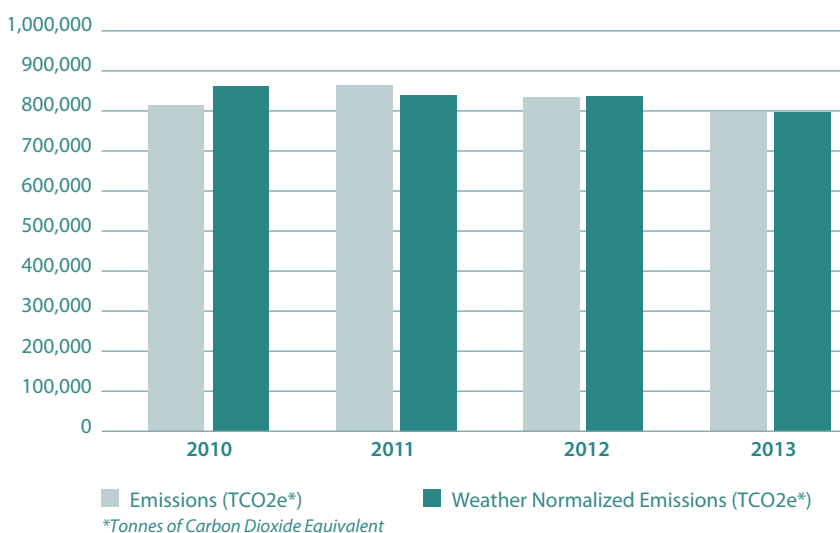
- ▶ *Total GHG emissions:*
796,080 tonnes
- ▶ *Emissions that do not
require offsets:*
103,481 tonnes
- ▶ *Total Offsets
Purchased:*
692,599 tonnes
- ▶ *Offset Investment:*
\$17,314,975
- ▶ *Total Carbon Neutral
Capital Funding
Distributed:*
\$5,000,000
- ▶ *Total Energy Costs:*
\$500,000,000
(approximately)

CARBON NEUTRAL GOVERNMENT HELPS TO CREATE HEALTHY, RESILIENT COMMUNITIES

by deploying clean energy technologies in public buildings across British Columbia while simultaneously reducing energy costs – money saved that can be re-invested in public services like education and health care. Carbon neutral organizations work to engage 300,000 public servants to take action on climate change, and in turn reach out to the two million British Columbians that work, learn in or visit government buildings each year.

In 2013, B.C.'s public sector has seen a reduction in emissions of approximately 17,000 tonnes compared to 2010 emissions. Once the emissions are normalized for weather conditions, B.C.'s total public sector emissions have decreased by approximately 65,000 tonnes since 2010, which is equivalent to taking approximately 13,500 cars off the road. About 23,500 tonnes of this decrease can be attributed to an increase in cleaner hydroelectric generation and a decrease in reliance on higher emission thermal power generation compared to prior years.

**TOTAL EMISSIONS ACROSS THE PUBLIC SECTOR
2010 – 2013**





► WHAT IS WEATHER NORMALIZATION?

Buildings make up 80% of B.C.'s provincial public sector emissions, and these emissions change from year to year, often due to differences in heating and cooling requirements that result from variability in outside temperature. To enable year-to-year comparison, and show overall building performance and efficiency improvements, emissions are adjusted for heating and cooling requirements by "normalizing" emissions. To do this, we take the average temperature profile for a 30-year period (the "normal") and calculate the number of days that require buildings to use energy to heat or cool – temperatures above or below 15 C. We then compare that to the year to see if there was more or less energy required. than normal.

Where are Our Emissions Coming From?

"Carbon neutral capital investments reduce energy costs, demonstrate clean technology and lower carbon emissions..."

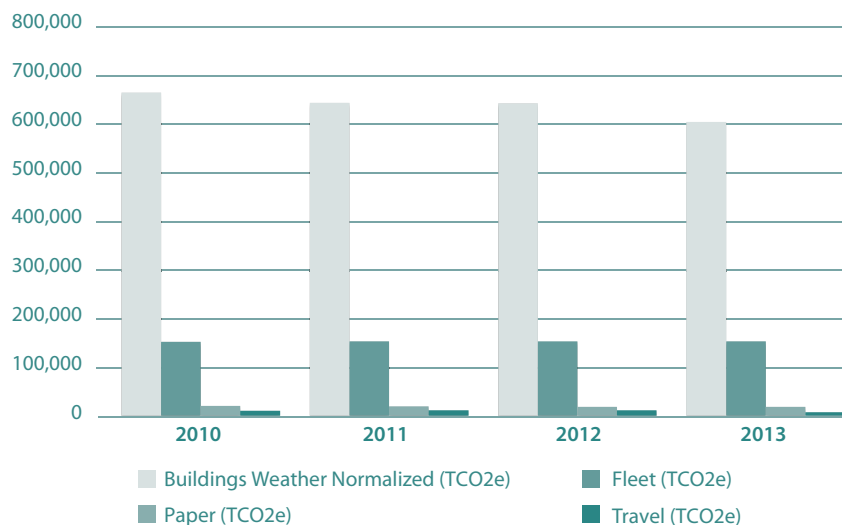
TARGETING EMISSIONS REDUCTIONS: B.C.'s Public Buildings

Consistently, for the past four years, more than 80% of provincial public sector emissions have come from buildings. These emissions are slowly decreasing, in part due to the efforts of people working across the public sector in facilities and energy management, as well as sustainability and energy management coordinators. These individuals recognize the importance of B.C.'s public sector in the fight against climate change.

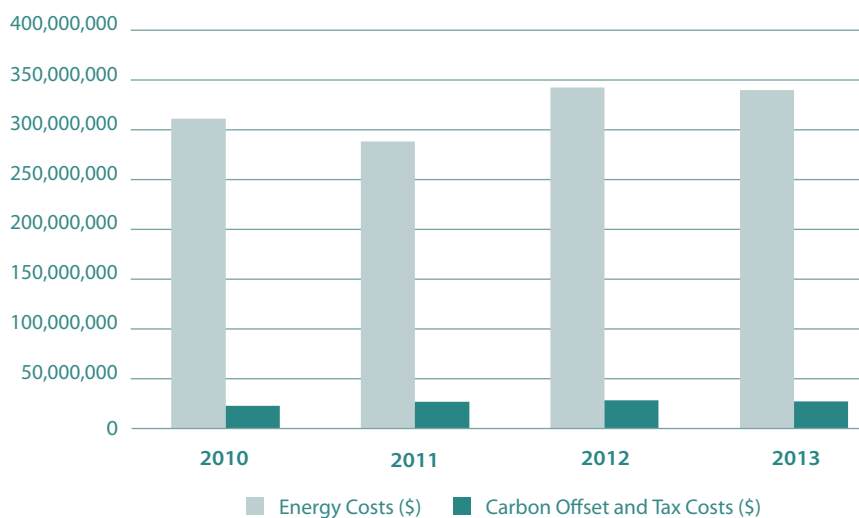
While B.C.'s public sector only emits a small portion of the province's total emissions, we recognize the importance of demonstrating our climate leadership through action. Our buildings, where British Columbians come to learn, to heal, to visit friends and family, and to access a range of public services, provide a point of contact in which to communicate and demonstrate these actions to the public.

With this in mind, in April 2012, B.C. developed the Carbon Neutral Capital Program to give school districts throughout B.C. a boost to help reduce their carbon footprint and save money. Since then, a total of \$5 million has been provided annually through the Carbon Neutral Capital Program enabling school districts to undertake electrical and mechanical improvements to their schools to lower carbon emissions. Next year, the program will be expanded to include additional funding for health authorities and post-secondary institutions, and in Budget 2014, \$14.5 million was earmarked for these sectors. Carbon neutral capital investments reduce energy costs, demonstrate clean technology and lower carbon emissions, and can help public sector organizations finance further energy projects and improve public services throughout B.C.

TOTAL EMISSIONS ACROSS THE PUBLIC SECTOR by Source 2010 – 2013



ESTIMATED PUBLIC SECTOR BUILDING ENERGY COSTS Commodity vs. Carbon 2010 – 2013



◀ AS SHOWN IN THIS GRAPH

carbon offset and tax costs, when compared to energy costs, are a very small financial burden. In fact, the strategic focus needs to shift from offsets to reducing the amount the public spends on energy.

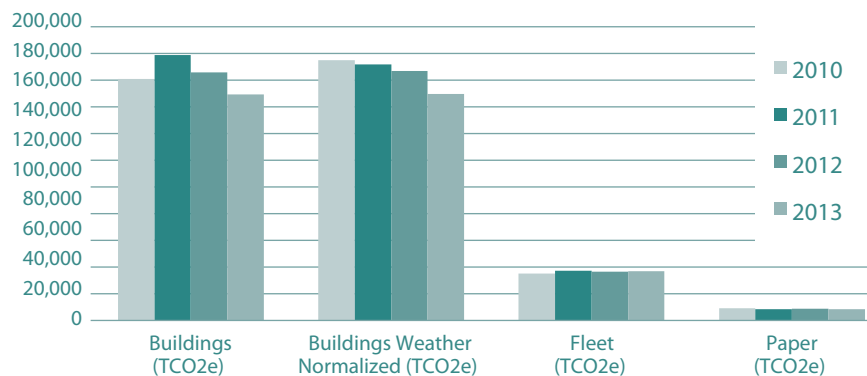


School Districts

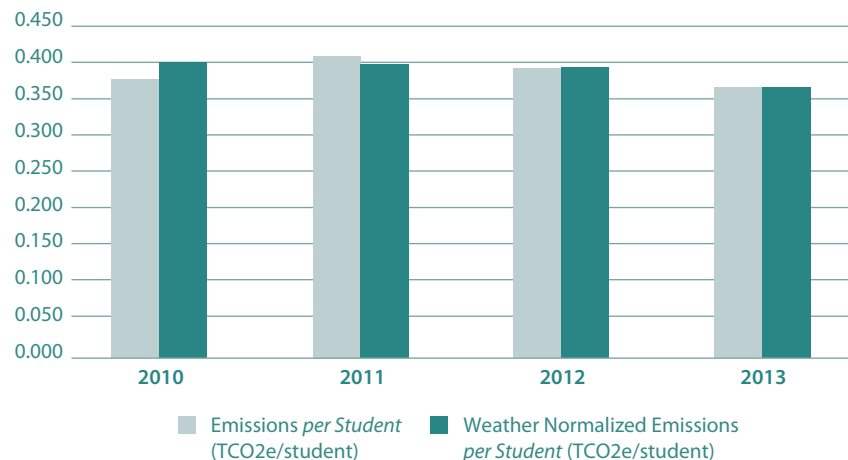
2013 EMISSIONS AT A GLANCE: B.C.'s School Districts

- ▶ *Total GHG emissions:*
190,428 tonnes
- ▶ *Emissions that do not require offsets:*
22,294 tonnes
- ▶ *Total Offsets Purchased:*
168,134 tonnes
- ▶ *Offset Investment:*
\$4,203,350
- ▶ *Carbon Neutral Capital Program funding received:*
\$5,000,000
- ▶ *Total Energy Costs:*
\$100,000,000 (approximately)

TOTAL EMISSIONS ACROSS SCHOOL DISTRICTS
2010 – 2013



EMISSIONS ACROSS SCHOOL DISTRICTS
per Student 2010 – 2013



SUCCESS STORY: School District 35 – Langley

CLIMATE ACTION IN B.C.'S SCHOOLS

Investing in B.C.'s schools is investing in the future of our province. By taking responsibility for carbon emissions at schools, we are improving the learning environment while teaching students that we care about both their current environment and the one they will inherit later on. Importantly, for every dollar spent by school districts on carbon offsets, an equivalent investment is returned to the districts over time through the Carbon Neutral Capital Program to invest in energy efficient, low emissions infrastructure.

With more than 525,000 students and 50,000 staff across the province that work together to ensure a positive, safe learning environment, carbon neutral schools bring climate action to every community in British Columbia.



SCHOOL DISTRICT 35 had a very successful year in 2013. Despite adding two new schools (both Leadership in Energy and Environmental Design (LEED) Gold certified buildings), which increased their overall footprint, they managed to reduce overall emissions from 2011 levels by 3%.

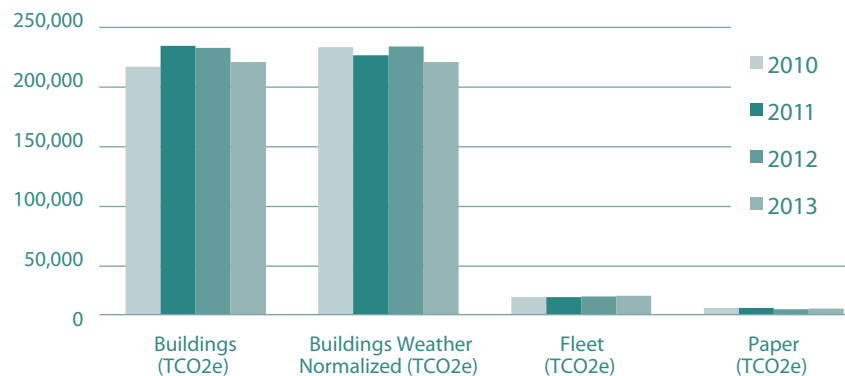
Along with the addition of two new LEED Gold facilities, the district also took action to replace end-of-life boilers with new high efficiency boilers at their West Langley Elementary School, cutting gas dependency by approximately 30%. Lighting upgrades were done at three schools, power management software installed at multiple sites and Green Teams were developed across the district. Their school board also took the lead by going completely paperless.

Health Authorities

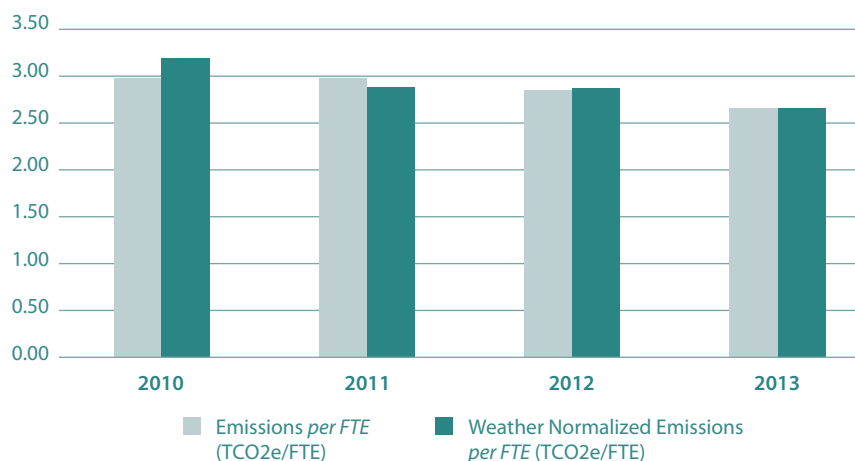
2013 EMISSIONS AT A GLANCE: B.C.'s Health Authorities

- ▶ *Total GHG emissions:*
232,511 tonnes
- ▶ *Emissions that do not
require offsets:*
632 tonnes
- ▶ *Total Offsets
Purchased:*
231,879 tonnes
- ▶ *Offset Investment:*
\$5,796,975
- ▶ *Total Energy Costs:*
\$135,000,000
(approximately)

TOTAL EMISSIONS ACROSS HEALTH AUTHORITIES 2010 – 2013



ESTIMATED HEALTH SECTOR EMISSIONS per Full Time Equivalent Employee (FTE) 2010 – 2013



CLIMATE ACTION IN B.C.'S HEALTH SECTOR

Across the province, British Columbia's health authorities are taking major strides to both improve the physical environments of their buildings and to lower their carbon footprint. Informed by the LEED Gold public buildings policy, new health care facilities are state-of-the-art green buildings, and patients, staff and visitors are noticing the differences between these new facilities and older healthcare buildings. With improved daylight conditions, better indoor air quality, and modern, comfortable décor, facilities across B.C. are taking steps to provide noticeably improved environments for healing.



THE PROVINCIAL HEALTH SERVICES AUTHORITY

has been consistently undertaking energy conservation measures as a means to save money and reduce emissions. The authority's 2013 emissions dropped by 20% below 2012 levels due largely to the various initiatives undertaken.

The most significant project completed in 2013 was the implementation of optimization measures at the BC Cancer Research Centre as part of the BC Hydro and FortisBC sponsored Continuous Optimization Program. Through this project, the general ventilation and exhaust rates were optimized to avoid wasting energy while maintaining safety and code requirements.

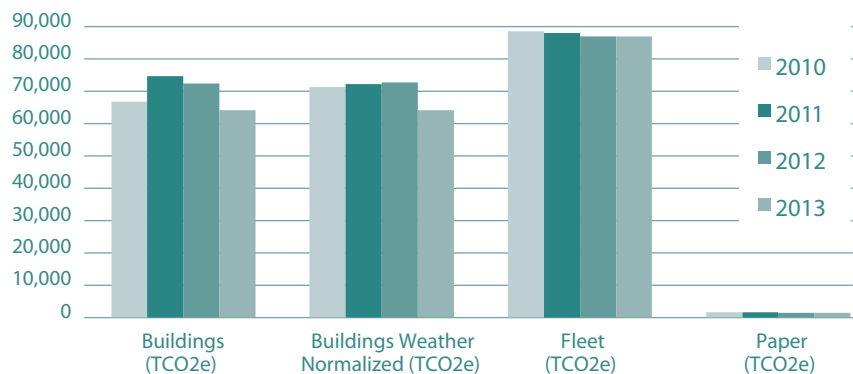
This project required a great deal of engagement with occupants and lab safety staff to gain full support for the ventilation optimization and explain how safety would be maintained. The estimated annual savings from this specific project is approximately 0.88 gigawatt hour of electricity, 6,700 gigajoules of gas, 357 tonnes of carbon dioxide equivalent and \$100,000 in avoided energy costs. After adjusting for weather variation, the steam use at the centre has been reduced by 14% since 2012 and these savings can be attributed to this project.

Crown Corporations

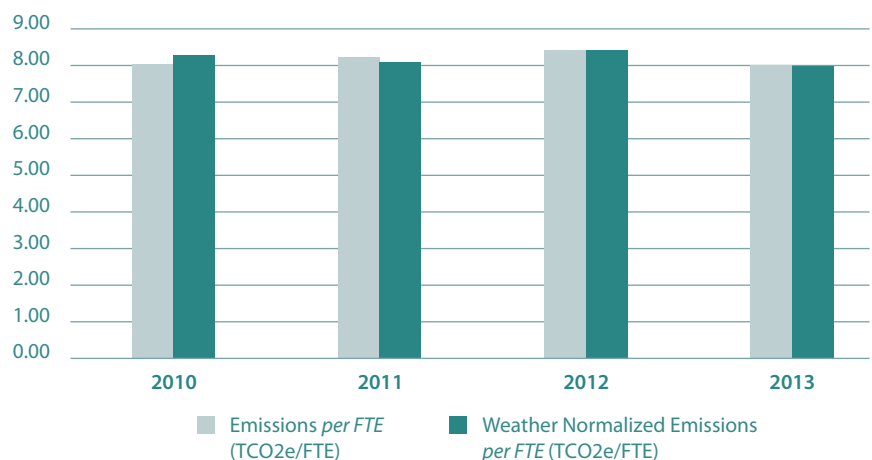
2013 EMISSIONS AT A GLANCE: B.C.'s Crown Corporations

- ▶ *Total GHG emissions:*
147,968 tonnes
- ▶ *Emissions that do not
require offsets:*
61,619 tonnes
- ▶ *Total Offsets
Purchased:*
86,349 tonnes
- ▶ *Offset Investment:*
\$2,158,725
- ▶ *Total Energy Costs:*
\$100,000,000
(approximately)

TOTAL EMISSIONS ACROSS CROWN CORPORATIONS
2010 – 2013



EMISSIONS ACROSS CROWN CORPORATIONS
per FTE 2010 – 2013



SUCCESS STORY: *BC Housing*

CLIMATE ACTION IN B.C.'S CROWN CORPORATIONS

B.C.'s Crown corporations range significantly in size and mandates. From the First Peoples' Cultural Council's mandate to support the revitalization of Aboriginal languages, arts and culture in B.C., to the Insurance Corporation of B.C.'s mandate to provide universal auto insurance to B.C. motorists, B.C.'s Crown corporations provide services to nearly all British Columbians. By taking action to reduce their emissions they are showcasing our leadership as a province and reducing the emissions associated with the services British Columbians access.



IN 2013, BC HOUSING REDUCED THEIR TOTAL GREENHOUSE GAS EMISSIONS

by 12% from 2012 levels. BC Housing has been a leader in emissions reductions by aggressively targeting their building stock for retrofits and by building the most energy-efficient buildings they can. Two examples of the retrofits they did in 2013 include:

Champlain Place: retrofits included lighting upgrades, switching from mainly gas heating to air-source heat pumps for townhouses, high-efficiency boilers and low-flow fixtures (shower heads and aerators). This has resulted in an 18% drop in emissions from 2012 at this facility.

Skeena Terrace: retrofits included CFL lighting, new windows, high-efficiency boilers, low-flow fixtures (shower heads and aerators) and solar hot-water panels. This resulted in a 15% reduction in emissions from 2012 levels at this facility.

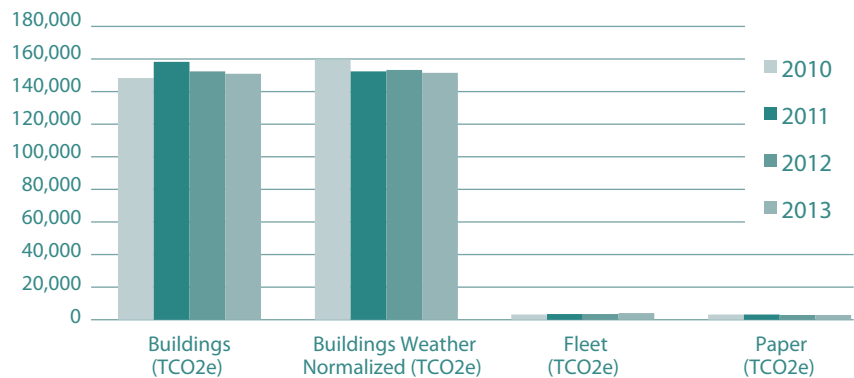
BC Housing also reduced their paper consumption by a very impressive 32% below their 2012 levels.

Universities and Colleges

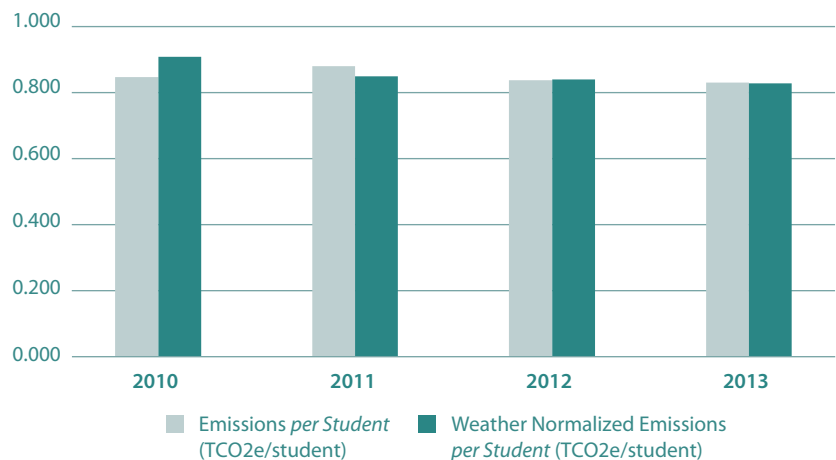
2013 EMISSIONS AT A GLANCE: B.C.'s Universities and Colleges

- ▶ *Total GHG emissions:*
154,186 tonnes
- ▶ *Emissions that do not
require offsets:*
17,951 tonnes
- ▶ *Total Offsets
Purchased:*
136,235 tonnes
- ▶ *Offset Investment:*
\$3,405,875
- ▶ *Total Energy Costs:*
\$100,000,000
(approximately)

TOTAL EMISSIONS ACROSS UNIVERSITIES *and* COLLEGES 2010 – 2013



EMISSIONS ACROSS UNIVERSITIES *and* COLLEGES per Student 2010 – 2013



SUCCESS STORY: *Langara College*

CLIMATE ACTION IN B.C.'S UNIVERSITIES AND COLLEGES

B.C.'s universities and colleges are centres of excellence that foster learning and awareness. More than 187,000 students attended these facilities in 2013. Larger facilities such as the University of British Columbia and Simon Fraser University are akin to small cities unto themselves. They have permanent residents, large facilities and are transportation hubs. These facilities are places where innovative actions can take place to reduce our greenhouse gas emissions, not just for the sake of reductions, but also to learn new approaches and evaluate their effectiveness. These institutions provide the ability to conduct research and monitor new approaches to reducing emissions while educating British Columbians on sustainability and the impacts of a green economy. Our universities and colleges have been pushing the envelope on how to address climate change and have been successful at reducing their emissions while learning how to foster greater emission reduction success and overall sustainability.



LANGARA HAS BEEN PARTICIPATING in BC Hydro's Continuous Optimization Program since 2009. In 2009, Langara set the goal of reducing energy use of existing campus buildings by 15% (from 2009/10 levels). To date, Langara has actually achieved a 19% reduction, thus exceeding its target.

Various building upgrades have been made in 2013, including valve repairs, the installation of new variable air volume controllers and graphical interfaces for schedule optimization. Controls, graphics and piping upgrades have been made to a number of buildings along with continued commissioning and monitoring for further optimization. A campus-wide central heating plant study and strategic plan have also been undertaken.

In 2013, Langara started construction on a new Science and Technology Building. The new building is intended to provide a high-quality learning environment while achieving a LEED Gold level of certification through the implementation of a comprehensive sustainability strategy. Combined energy efficiency measures are expected to reduce annual energy consumption for the project by more than 30% compared to the universal standard ASHRAE 90.1-2010.

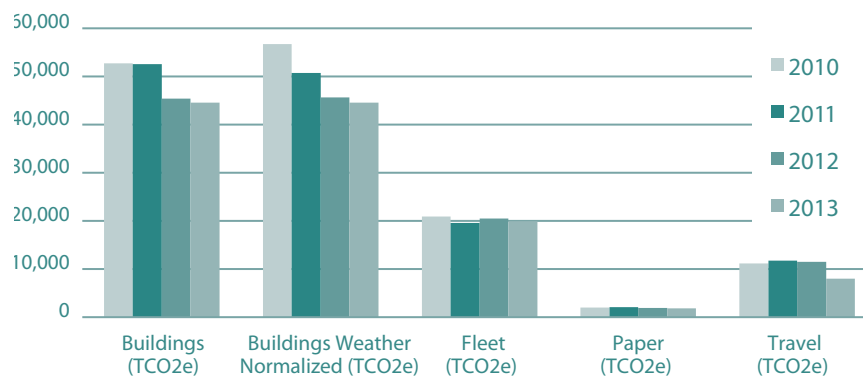
Core Government

2013 EMISSIONS AT A GLANCE:

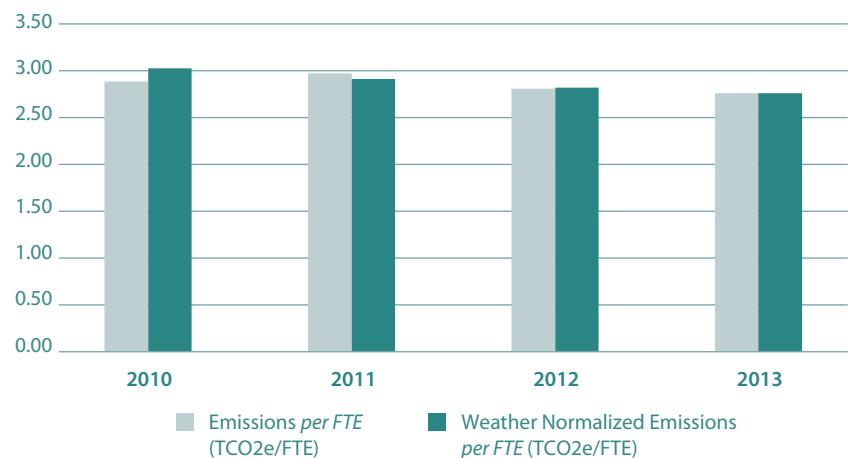
B.C.'s Ministries and Agencies

- ▶ *Total GHG emissions:*
70,987 tonnes
- ▶ *Emissions that do not require offsets:*
985 tonnes
- ▶ *Total Offsets Purchased:*
70,002 tonnes
- ▶ *Offset Investment:*
\$1,750,050
- ▶ *Total Energy Costs:*
\$50,000,000
(approximately)

TOTAL EMISSIONS ACROSS CORE GOVERNMENT 2010 – 2013



ESTIMATED EMISSIONS ACROSS CORE GOVERNMENT per FTE 2010 – 2013



SUCCESS STORY: *Ministry of Justice*

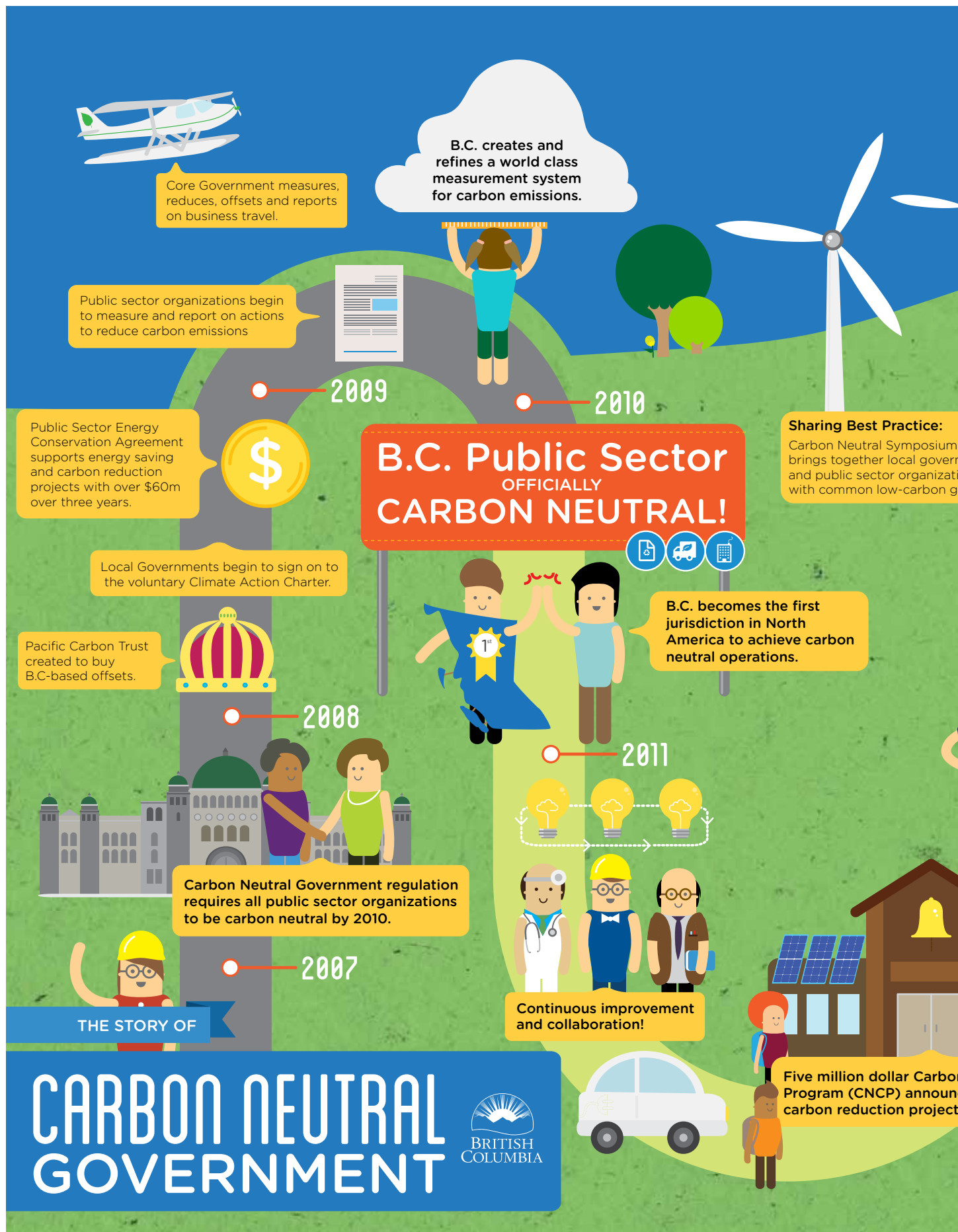
CLIMATE ACTION IN CORE GOVERNMENT

Core Government in B.C. is made up of ministries and agencies with more than 26,000 staff. Initiatives taking place within core government to reduce emissions and conserve energy include increased use of video conferencing to reduce travel, paperless office initiatives and various “green” behavioural campaigns such as the annual Hibernation Challenge and participation in Bike to Work Week. Shared Services BC administers most government buildings and is dedicated to reducing energy consumption in its existing buildings, as well as in the construction of new buildings that are certified at the LEED Gold level. Core Government has a sustainable procurement and green purchasing guide that encourages ministries to make environmentally responsible procurement choices, increasing the government’s conservation of resources and developing a demand for environmentally responsible products and services.



THE MINISTRY OF JUSTICE finished expanding the Surrey Pretrial Services Centre in 2013. When the expansion to the centre opened in 2013, the entire centre became the largest correctional facility in B.C., with 365 cells. The expansion was designed to create a better working environment for staff and a better standard of living for inmates, with ample natural light and improved indoor air quality. The expansion was designed to meet LEED Gold standards, the highest level of sustainability achieved to date in a B.C. correctional facility. This will offer environmental benefits and lower operating costs throughout the life of the structure. In addition to achieving LEED Gold level, a number of environmental design initiatives were taken, including:

- ▶ Stormwater management and low-reflective roofing;
- ▶ Water usage reduction including efficient exterior landscaping strategies and low-flow fixtures;
- ▶ Optimized energy performance through design and high performance equipment management;
- ▶ Effective construction waste management, use of recycled content materials, use of regional materials and certified wood;
- ▶ Use of high-quality indoor materials resulting in low-polluting sources from flooring, paints and other materials.



Pacific Carbon Trust joins the Ministry of Environment.



Utility partners, BC Hydro and FortisBC, help deliver carbon reductions.

Public sector operations are helping to green our communities.

As voluntary signatories to the Climate Action Charter, 182 local governments are taking the same path – reducing emissions from corporate operations, in addition to fostering community-wide climate action.

86% of local governments are measuring their corporate emissions and 31 reported as being carbon neutral for 2012!



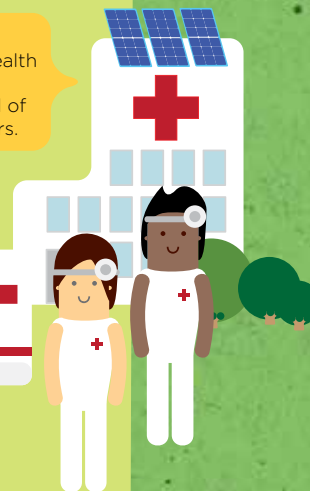
Energy management is a key part of the program:

It reduces carbon and saves money, which goes back into public services.



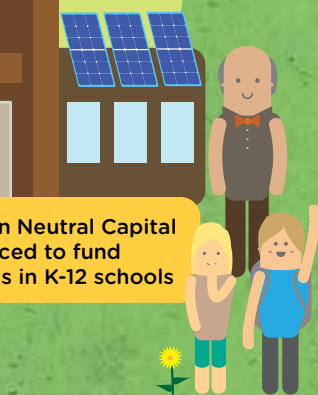
2014

Carbon Neutral Capital Program expanded to health and advanced education sectors, providing a total of \$14.5m to all three sectors.



2012

Carbon Neutral Capital Program expanded to fund energy audits in K-12 schools



Government continues to support the public sector in finding ways to conserve energy and reduce carbon while saving money.

We all benefit from healthy, low-carbon and climate resilient communities!



What is Carbon Neutrality?

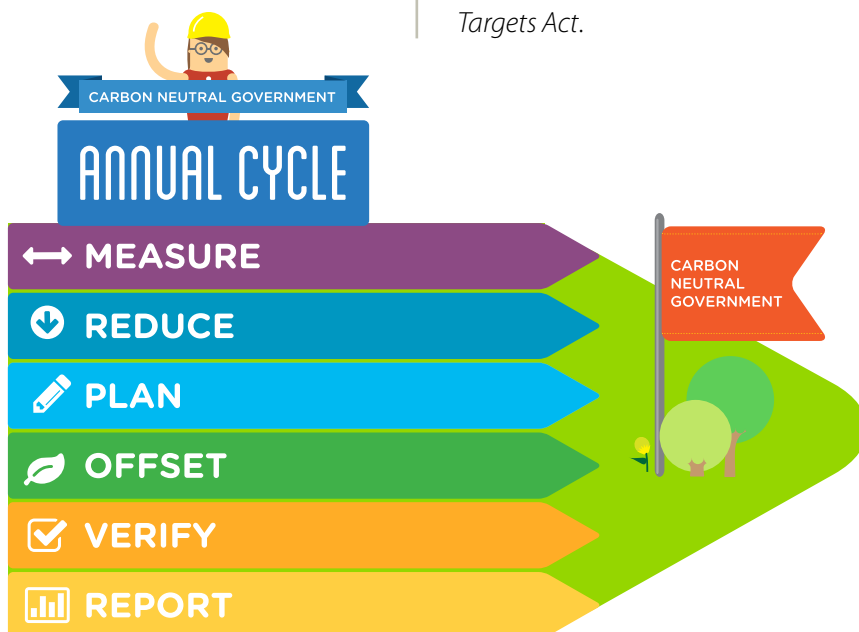
"...hospitals, schools, colleges and universities, Crown corporations, and ministries and agencies have been carbon neutral for their operations since 2010..."

CARBON NEUTRALITY is one of many strategies for encouraging emissions reductions and taking leadership on climate action. It makes particular sense in a government leadership context, wherein a governmental entity wishes to take full responsibility for its emissions. To become carbon neutral, an organization, business or government measures its carbon footprint, reduces that footprint as much as practicable each fiscal year, offsets any emissions that cannot be reduced and reports on greenhouse gas emissions as required by the *Greenhouse Gas Reduction Targets Act*.

In the British Columbia context, all hospitals, schools, colleges and universities, Crown corporations, and ministries and agencies have been carbon neutral for their operations since 2010 for their paper, fleet and building emissions. Ministries and agencies are also carbon neutral for their business travel.

In B.C., Carbon Neutral Government is complemented by a number of other emission reduction activities and policies, as outlined in the 2014 *Climate Action in British Columbia: 2014 Progress Report*, including B.C.'s highly successful carbon tax, the local government Climate Action Charter and industrial reporting regulation, among other initiatives.

Around the world, other jurisdictions, businesses and event organizers are joining B.C. in the fight against climate change. Whether they are carbon neutral, or have implemented a carbon tax or cap-and-trade system, governments, corporations and people around the world are working to decrease emissions and become more resilient in the face of a changing climate.



Carbon Offsets

"Since 2007, B.C.'s offset investments have leveraged an estimated \$300 million of private sector investment in the province."

B.C.'S INVESTMENTS IN CARBON OFFSETS

support innovation, new jobs, economic opportunities and green technologies in communities throughout the province. Revenue from offset sales helps make clean-technology projects a reality, resulting in economic and social benefits, and reduced greenhouse gas emissions. Our offset projects span economic sectors and regions across B.C. Since 2007, B.C.'s offset investments have leveraged an estimated \$300 million of private sector investment in the province. B.C. is now well-situated to attract additional investors who are purchasing offsets for voluntary

and regulatory markets. For the 2013 carbon neutral year, Pacific Carbon Trust delivered 677,884 tonnes of offsets on behalf of B.C.'s 130 provincial public sector organizations. These offsets were sourced from 20 projects spanning B.C.'s economic regions and sectors.

In November 2013, it was announced that as part of government's Core Review, Pacific Carbon Trust accomplished its goal of creating a carbon offset business sector and that it would be dissolved as a Crown corporation and transitioned into government. This will result in administrative and operational cost savings for the Province. Beginning with the 2014 reporting year, the offset purchase and procurement program will be conducted from within the Climate Action Secretariat's Climate Investment Branch in the Ministry of Environment. Public sector organizations will continue to purchase offsets to achieve carbon neutrality if they cannot lower their emissions to zero through other means. All provincial public sector organizations will continue to pay a \$25 per tonne charge for their greenhouse gas emissions as a concrete means to encourage efforts to reduce emissions and energy costs.



Verification

TO ENSURE THE DATA WE REPORT AND OFFSET ARE COMPLETE AND ACCURATE,

public sector organizations annually self-certify that their emissions data is complete and accurate, and a selection of public sector organizations are randomly selected for an independent review of their data collection and input practices. This process was selected because it strikes a balance between rigour and administrative requirements for B.C.'s public sector. In 2013, eight public sector organizations had their 2012 emissions verified by Deloitte & Touche LLP, including:

- ▶ Interior Health Authority
- ▶ University of Victoria
- ▶ School District 23 Kelowna
- ▶ School District 35 Langley
- ▶ School District 8 Kootenay Lake
- ▶ School District 48 Sea to Sky/Howe Sound
- ▶ Capilano University
- ▶ BC Transit

All but one of these organizations received an "unqualified" report, which means that no outstanding issues were identified with their data and data collection processes. The organization receiving a qualified report has actively undertaken efforts to ensure that the issues identified have been corrected.

Deloitte identified two main issues which are common to many of our public sector organizations. These are overall issues which may not have caused a material error in the data, but which the verifiers identified as potential issues that should be reviewed. The first is that too often the data collection process rests with just one person within an organization. This means that if that person leaves, there is no continuity for the next person to fill that role. To address this issue, organizations are encouraged to ensure that more than one person is knowledgeable and familiar with the process and the necessary steps to ensure for high quality emission data collection. In addition, the Climate Action Secretariat, through the Carbon Neutral Government Team, is developing capacity-building tools to help ensure requisite bench strength in all public sector organizations.

The second issue identified was a lack of detailed documentation of the processes used to compile the data. This can lead to poor continuity in the face of staff turnover and can make it very difficult to identify where in the process a problem may have occurred. Revised instructions have been provided to organizations on how to document their processes and, moving forward, these issues will be highlighted in the annual information provided to organizations as they prepare to gather their emissions data.

In addition, the Electronic Data Exchange (EDX) project will help all organizations with data quality as, once implemented, this system will enable energy consumption data to be loaded directly into the online measurement tool called SMARTTool – in contrast to the current manual process. EDX is currently being piloted by a cross-section of public sector organizations.

▶ **VERIFICATION** is an independent, third-party process which looks at the quality of the emission data entered into SMARTTool by an organization, as well as the processes used to collect, compile and confirm the accuracy of that data. If the data is found to be incorrect by more than 5%, it is considered a material error and the organization receives a "qualified" report.

▶ **SINCE VERIFICATION** began in the 2011 reporting year, 17 organizations have had their emissions data verified. Of these, two have received qualified reports. An additional eight organizations being verified for the 2013 reporting year.

Appendix

B.C. PUBLIC SECTOR EMISSIONS and CARBON OFFSET INVESTMENT

The “Total Emissions” reported meet the reporting requirements of the Carbon Neutral Government Regulation of the *Greenhouse Gas Reduction Targets Act*. As per the regulation, some of the reported emissions

in the total do not require the purchase of offsets in order to reach carbon neutrality. This includes emissions from mobile or stationary combustion of biomass as well as emissions from bus fleets (i.e. school buses

and BC Transit buses). The total offsets purchased matches the emissions requiring offsets. For more information on how the B.C. public sector measures emissions, please visit LiveSmartBC.ca/carbonneutral.

ORGANIZATION	TOTAL EMISSIONS (Tonnes)	TOTAL OFFSETS PURCHASED (Tonnes)	OFFSET INVESTMENT
GRAND TOTAL	796,080	692,599	\$17,314,975
CORE GOVERNMENT	70,987	70,002	\$1,750,050
CROWN CORPORATIONS	147,968	86,349	\$2,158,725
BC Assessment Authority	440	436	\$10,900
BC Council for International Education	9	9	\$225
BC Games Society	4	4	\$100
BC Housing	23,172	23,142	\$578,550
BC Hydro	27,761	27,017	\$675,425
BC Innovation Council	3	3	\$75
BC Liquor Distribution Branch	3,489	3,471	\$86,775
BC Lottery Corporation	1,374	1,360	\$34,000
BC Pavilion Corporation	4,614	4,613	\$115,325
BC Transit	62,002	1,225	\$30,625
British Columbia Securities Commission	190	190	\$4,750
Columbia Basin Trust	23	23	\$575
Columbia Power Corporation	27	26	\$650
Community Living BC	608	606	\$15,150
Destination BC	152	152	\$3,800
First People's Heritage, Language & Culture Council	2	2	\$50
Forestry Innovation Investment	179	179	\$4,475
Industry Training Authority	38	38	\$950

ORGANIZATION	TOTAL EMISSIONS (Tonnes)	TOTAL OFFSETS PURCHASED (Tonnes)	OFFSET INVESTMENT
Insurance Corporation of BC	22,796	22,778	\$569,450
Knowledge Network Corporation	93	93	\$2,325
Legal Services Society	49	49	\$1,225
Oil and Gas Commission	442	434	\$10,850
Pacific Carbon Trust	2	2	\$50
Partnerships BC	32	32	\$800
Private Career Training Institutions Agency	3	3	\$75
Provincial Capital Commission	282	281	\$7,025
Royal BC Museum	105	105	\$2,625
Transportation Investment Corporation	78	78	\$1,950
HEALTH AUTHORITIES	232,511	231,879	\$5,796,975
BC Emergency Health Services	14,011	13,599	\$339,975
Bella Coola General Hospital	221	213	\$5,325
Fraser Health Authority	40,073	40,055	\$1,001,375
Interior Health Authority	42,518	42,449	\$1,061,225
Louis Brier Home & Hospital	565	565	\$14,125
Menno Hospital	438	438	\$10,950
Mount St. Mary Hospital	412	412	\$10,300
Nisga'a Valley Health Authority	190	186	\$4,650
Northern Health Authority	22,837	22,804	\$570,100
Providence Health Care	11,748	11,743	\$293,575
Provincial Health Services Authority	20,815	20,805	\$520,125

ORGANIZATION	TOTAL EMISSIONS (Tonnes)	TOTAL OFFSETS PURCHASED (Tonnes)	OFFSET INVESTMENT
RW Large Memorial Hospital	131	131	\$3,275
St. Joseph's General Hospital	1,272	1,269	\$31,725
St. Michael's Centre	673	673	\$16,825
Vancouver Coastal Health Authority	44,491	44,474	\$1,111,850
Vancouver Island Health Authority	32,076	32,023	\$800,575
Wrinch Memorial Hospital	40	40	\$1,000
SCHOOL DISTRICTS	190,428	168,134	\$4,203,350
School District 05 – Southeast Kootenay	3,303	2,716	\$67,900
School District 06 – Rocky Mountain	1,922	1,327	\$33,175
School District 08 – Kootenay Lake	3,041	2,142	\$53,550
School District 10 – Arrow Lakes (Nakusp)	373	261	\$6,525
School District 19 – Revelstoke	405	315	\$7,875
School District 20 – Kootenay-Columbia	2,000	1,583	\$39,575
School District 22 – Vernon	2,986	2,271	\$56,775
School District 23 – Central Okanagan (Kelowna)	6,007	4,796	\$119,900
School District 27 – Cariboo-Chilcoltin	4,152	2,888	\$72,200
School District 28 – Quesnel School	2,192	1,455	\$36,375
School District 33 – Chilliwack	3,274	2,429	\$60,725
School District 34 – Abbotsford	4,998	3,953	\$98,825
School District 35 – Langley	6,291	5,820	\$145,500
School District 36 – Surrey	18,773	18,546	\$463,650
School District 37 – Delta	3,344	3,288	\$82,200
School District 38 – Richmond	6,620	6,364	\$159,100
School District 39 – Vancouver	17,329	17,307	\$432,675
School District 40 – New Westminster	1,829	1,827	\$45,675
School District 41 – Burnaby	5,984	5,977	\$149,425
School District 42 – Maple Ridge	3,596	3,589	\$89,725
School District 43 – Coquitlam	9,409	9,392	\$234,800
School District 44 – North Vancouver	4,404	4,320	\$108,000
School District 45 – West Vancouver	1,710	1,707	\$42,675
School District 46 – Sunshine Coast	1,089	1,085	\$27,125
School District 47 – Powell River	1,183	975	\$24,375
School District 48 – Sea to Sky	1,940	1,518	\$37,950
School District 49 – Central Coast	400	338	\$8,450

ORGANIZATION	TOTAL EMISSIONS (Tonnes)	TOTAL OFFSETS PURCHASED (Tonnes)	OFFSET INVESTMENT
School District 50 – Haida Gwaii	582	574	\$14,350
School District 51 – Boundary	1,093	840	\$21,000
School District 52 – Prince Rupert	870	848	\$21,200
School District 53 – Okanagan Similkameen	937	681	\$17,025
School District 54 – Bulkley Valley	1,285	911	\$22,775
School District 57 – Prince George	6,176	6,163	\$154,075
School District 58 – Nicola-Similkameen	1,068	858	\$21,450
School District 59 – Peace River South (Dawson Creek)	3,829	2,738	\$68,450
School District 60 – Peace River North (Fort St John)	4,406	3,166	\$79,150
School District 61 – Greater Victoria	5,568	5,545	\$138,625
School District 62 – Sooke	2,838	2,363	\$59,075
School District 63 – Saanich	2,006	1,628	\$40,700
School District 64 – Gulf Islands	364	212	\$5,300
School District 67 – Okanagan Skaha (Penticton)	1,797	1,701	\$42,525
School District 68 – Nanaimo-Ladysmith	4,583	4,039	\$100,975
School District 69 – Qualicum	2,206	1,633	\$40,825
School District 70 – Alberni	1,406	1,225	\$30,625
School District 71 – Comox Valley	2,271	2,233	\$55,825
School District 72 – Campbell River	2,553	2,173	\$54,325
School District 73 – Kamloops/Thompson	5,853	4,228	\$105,700
School District 74 – Gold Trail	1,160	711	\$17,775
School District 75 – Mission	2,236	1,871	\$46,775
School District 78 – Fraser-Cascade	1,058	868	\$21,700
School District 79 – Cowichan Valley	2,655	2,139	\$53,475
School District 81 – Fort Nelson	656	647	\$16,175
School District 82 – Coast Mountain	2,235	2,228	\$55,700
School District 83 – North Okanagan-Shuswap	3,375	2,248	\$56,200
School District 84 – Vancouver Island West	192	172	\$4,300
School District 85 – Vancouver Island North	714	596	\$14,900
School District 87 – Stikine	426	425	\$10,625
School District 91 – Nechako Lakes	3,485	2,405	\$60,125

ORGANIZATION	TOTAL EMISSIONS (Tonnes)	TOTAL OFFSETS PURCHASED (Tonnes)	OFFSET INVESTMENT
School District 92 – Nisga'a	216	106	\$2,650
School District 93 – Conseil Francophone	1,772	1,772	\$44,300
UNIVERSITIES AND COLLEGES	154,186	136,235	\$3,405,875
British Columbia Institute of Technology	8,567	8,565	\$214,125
Camosun College	1,772	1,771	\$44,275
Capilano University	1,853	1,850	\$46,250
College of New Caledonia	2,965	2,963	\$74,075
College of the Rockies	801	779	\$19,475
Douglas College	1,930	1,930	\$48,250
Emily Carr University of Art and Design	814	814	\$20,350
Justice Institute of BC	677	673	\$16,825
Kwantlen Polytechnic University	2,546	2,545	\$63,625
Langara College	1,403	1,403	\$35,075
Nicola Valley Institute of Technology	428	426	\$10,650
North Island College	1,075	1,074	\$26,850
Northern Lights College	1,920	1,916	\$47,900
Northwest Community College	1,502	1,486	\$37,150
Okanagan College	1,531	1,527	\$38,175
Royal Roads University	1,212	1,209	\$30,225
Selkirk College	1,454	1,453	\$36,325
Simon Fraser University	17,001	16,991	\$424,775
Thompson Rivers University	4,090	4,075	\$101,875
University of British Columbia – Okanagan	3,630	3,629	\$90,725
University of British Columbia – Vancouver	71,289	56,801	\$1,420,025
University of Northern British Columbia	5,299	1,978	\$49,450
University of The Fraser Valley	2,561	2,560	\$64,000
University of Victoria	12,764	12,752	\$318,800
Vancouver Community College	2,537	2,537	\$63,425
Vancouver Island University	2,565	2,525	\$63,125

