

2025 Fraser Health Climate Change Accountability Report



BRITISH COLUMBIA

Carbon Neutral



Recognizing First Nations Title and Rights and Indigenous human rights

We recognize that Fraser Health provides care on the traditional, ancestral and unceded lands of the Coast Salish and Nlaka'pamux Nations and is home to 32 First Nations within the Fraser Salish region.

Fraser Health is dedicated to serving all Indigenous people and honours the unique cultures of the First Nations, Métis and Inuit living within the Fraser Salish region.

Indigenous Peoples have been stewards and caretakers of the lands, waters and ice and leaders in ecosystem conservation in what is now known as Canada since time immemorial. Recognizing, learning from and incorporating Indigenous traditional ecological knowledge into our planetary health and anchor mission goals is a priority for Fraser Health.

Declaration statement

This PSO Climate Change Accountability Report for the period January 1, 2025 to December 31, 2025 summarizes our greenhouse gas (GHG) emissions profile, the total offsets to reach net zero emissions, the actions we have taken in 2025 to minimize our GHG emissions and our plans to continue reducing emissions in 2026 and beyond.

Authors

This report was written by Energy and Environmental Sustainability (EES), a regional collaboration team of four health organizations that works to drive change for environmentally sustainable and climate resilient care across planning, design, construction and operations. Housed within the Planning, Transformation and Infrastructure department, the EES team cannot do this work alone, and works with diverse teams, departments, staff and medical staff across Fraser Health.

Contributors

In particular, we would like to acknowledge the contributions of the following teams: Sustainability and Preparedness, Communications, Environmental Services, Food Services, Health Emergency Management BC, Integrated Protection Services, Planning Transformation and Infrastructure and many others named throughout this report.

2026 Energy and Environmental Sustainability team. All rights reserved.

This report has been designed by Be the Change Group for the Energy and Environmental Sustainability team.

Unless otherwise noted, all materials may be freely reproduced in part or in full, provided that the source is acknowledged.

Suggested citation:

Fraser Health. *Climate Change Accountability Report 2025.* Vancouver, BC: Energy and Environmental Sustainability team; May 2026.

For further information contact:

Robert Bradley
Regional Director, Energy and Environmental Sustainability
robert.bradley@vch.ca

Navigation

► **Table of contents**

Executive message

Our story

Our progress: Targets and
dashboards

Our leadership

Our partners

2025 GHG emissions and
offsets summary table

Site by site emissions

References

Related resources

[Green+Leaders Annual Report](#)

[Methodology for Key Performance
Indicators](#)

Table of contents



This is an interactive report. Easily navigate to different sections by **clicking on the text headings**, including those in **the navigation bar to the left**. **References are also linked for easy access.**

Executive message	4
Our story	5
About Fraser Health	6
Commitment to sustainability	7
Our progress: Targets and dashboards	8
About our targets	9
About our key performance indicators	10
Energy and carbon	11
Transportation	15
Waste	17
Water	20
Our leadership	22
Climate risk management	23
Buildings	25
Fleet vehicles and transportation	27
Paper	28
Refrigerants	28
Improving patient care with sustainability	29
Our partners	31
2025 GHG emissions and offsets summary table	33
Site by site emissions	34
References	35

2025 Fraser Health Climate Change Accountability Report (CCAR)

Navigation

Table of contents

► **Executive message**

Our story

Our progress: Targets and
dashboards

Our leadership

Our partners

2025 GHG emissions and
offsets summary table

Site by site emissions

References

Related resources

[Green+Leaders Annual Report](#)

[Methodology for Key Performance
Indicators](#)



Executive message

I am proud to present Fraser Health's 2025 Climate Change Accountability Report.

2025 marked our 16th year of reporting on our environmental sustainability. This year was one of health authority reviews and continued budgetary constraints, and it showed how sustainability work can be a practical response to these pressures. By reducing energy use, waste and emissions, we can lower operating costs, improve the environments where staff and medical staff work, support high-quality patient care and contribute to healthier communities.

In 2025, our greenhouse gas emission offsets from buildings, fleet vehicles, paper and refrigerants totalled 43,534 tCO₂e, representing a 3.5 per cent increase from the previous year, mostly due to an increase in the emissions factor for electricity. To balance these emissions and meet legislated requirements, we invested \$1,142,768 in carbon offsets.

We made progress beyond legislated reporting, surpassing targets for staff and medical staff commuting by lower-carbon travel options, waste recycled or composted at acute care sites and waste recycled or composted at non-acute care sites.

A key focus this year was building for the future. Climate considerations were integrated into major projects, including Burnaby Hospital, the new Surrey Hospital and BC Cancer Centre, with attention to cooling capacity, indoor air quality and preparedness for extreme weather. We also advanced climate resilience planning at Heritage Village long-term care facility and Fraser Canyon Hospital to better understand site-level risks and inform future investments.

Across Fraser Health, teams worked on projects that improve both environmental and health outcomes. We phased out desflurane, a potent greenhouse gas used in anesthesia, at 10 of 11

sites. More than 2,000 staff and medical staff participated in food sustainability fairs focused on plant-forward food. At Queen's Park Care Centre, a new solar thermal system is expected to reduce natural gas use by 2,173 gigajoules and emissions by 106 tCO₂e annually.

I want to thank Fraser Health staff, medical staff, volunteers and partners for their leadership and commitment. Together, we are making meaningful progress toward a health-care system that is more resilient, more efficient and better prepared for the health challenges of a changing climate.



A handwritten signature in black ink that reads 'Dermot Kelly'.

Dermot Kelly

President and Chief Executive Officer
Fraser Health

2025 Fraser Health

Climate Change Accountability Report (CCAR)

Navigation

[Table of contents](#)

[Executive message](#)

► [Our story](#)

[About Fraser Health](#)

[Commitment to sustainability](#)

[Our progress: Targets and
dashboards](#)

[Our leadership](#)

[Our partners](#)

[2025 GHG emissions and
offsets summary table](#)

[Site by site emissions](#)

[References](#)

Related resources

[Green+Leaders Annual Report](#)

[Methodology for Key Performance
Indicators](#)

Coastal strawberry, a plant native to B.C.

Our story

Fraser Health is committed to embedding environmental sustainability and climate resilience in all we do, from changing business practices and how we manage our buildings, to moving toward reusable medical supplies and low-carbon care delivery, to supporting opportunities for staff and medical staff to improve sustainability in their own day-to-day work.

2025 Fraser Health

Climate Change Accountability Report (CCAR)

Navigation

[Table of contents](#)

[Executive message](#)

Our story

► [About Fraser Health](#)

[Commitment to sustainability](#)

[Our progress: Targets and dashboards](#)

[Our leadership](#)

[Our partners](#)

[2025 GHG emissions and offsets summary table](#)

[Site by site emissions](#)

[References](#)

Related resources

[Green+Leaders Annual Report](#)

[Methodology for Key Performance Indicators](#)

About Fraser Health

Overview

82

long-term care communities



201 buildings



795,292

visits to the emergency room



50K+

staff, medical staff and volunteers

Health care contributes approximately

5 per cent

of global greenhouse gas (GHG) emissions^A. Canada has **the second highest health-care emissions** per capita relative to other high-income countries^B.

Environmental

impact

14 buildings

certified with Leadership in Energy and Environmental Design (LEED)^C



44,751 tCO₂e

total emissions from legislated sources



13,541,034 kg

waste generated



1,454,406 m³

water used at metered sites



2025 Fraser Health Climate Change Accountability Report (CCAR)

Navigation

Table of contents

Executive message

Our story

About Fraser Health

► Commitment to sustainability

Our progress: Targets and dashboards

Our leadership

Our partners

2025 GHG emissions and offsets summary table

Site by site emissions

References

Related resources

[Green+Leaders Annual Report](#)

[Methodology for Key Performance Indicators](#)

Commitment to sustainability

Fraser Health has made an organizational commitment to environmental sustainability, recognizing it as an essential component of high-quality care. We will leverage partnerships, research, measurement, evaluation, technology and leadership to drive change in how we deliver health care throughout our communities.

Indigenous teachings remind us that the health and well-being of our communities is deeply connected to the health of the environment. Evidence shows that climate change and environmental degradation negatively affect physical and mental health, contributing to impacts ranging from increased respiratory illness to food insecurity. These changes also place growing pressure on the health system through events such as floods, wildfires and extreme heat.

To help address these risks, in 2025 we activated and supported teams across the organization to advance our planetary health goals. More than 85 per cent of sites, programs and services throughout Fraser Health implemented quality improvement initiatives aimed at increasing sustainability, and this momentum continues to grow.

We will continue to provide training and learning opportunities for staff and medical staff on sustainability and climate change in health care and support innovation in sustainability. By working

together and focusing on the actions within our control, we can transform our health system so it is both resilient to future threats and environmentally sustainable.

Everyone has a right to optimal health and well-being. However, climate change and environmental degradation disproportionately affect individuals and communities experiencing existing social and economic inequities, resulting in poorer health outcomes and reduced access to resources. These inequities must be considered in our efforts to restore and protect our environment.

Fraser Health is proud to work with the people and communities we serve to reduce the impact of our services and contribute to a climate-resilient region.

In 2025, Fraser Health updated the environmental sustainability policy to serve as a practical tool to guide how we plan, design and build health facilities to embed sustainability and resilience into the core of health care operations. Find out more about the new Facilities Management: Low Carbon Resilience & Environmental Sustainability policy [here](#).



Fraser Valley, B.C.

2025 Fraser Health

Climate Change Accountability Report (CCAR)

Navigation

[Table of contents](#)

[Executive message](#)

[Our story](#)

► [Our progress: Targets and dashboards](#)

[About our targets](#)

[About our key performance indicators](#)

[Energy and carbon](#)

[Transportation](#)

[Waste](#)

[Water](#)

[Our leadership](#)

[Our partners](#)

[2025 GHG emissions and offsets summary table](#)

[Site by site emissions](#)

[References](#)

Related resources

[Green+Leaders Annual Report](#)

[Methodology for Key Performance Indicators](#)

Our progress: Targets and dashboards

Fraser Health is committed to measuring, assessing and reporting progress towards a more sustainable health system. We recognize that sustainability is an ongoing journey that requires consistent, long-term monitoring and the ability to adjust strategies as we learn. Through tracking progress and sharing results, we are accountable to the communities and First Nations we serve, and we are better able to make informed decisions to reduce our environmental impact.

Navigation

Table of contents

Executive message

Our story

Our progress: Targets and
dashboards

► About our targets

About our key performance
indicators

Energy and carbon

Transportation

Waste

Water

Our leadership

Our partners

2025 GHG emissions and
offsets summary table

Site by site emissions

References

Related resources

[Green+Leaders Annual Report](#)

[Methodology for Key Performance
Indicators](#)

About our targets

Fraser Health is working towards both legislated and voluntary targets that measure progress on our journey towards sustainability. While legislated targets apply to all public sector organizations, we set our voluntary targets by analyzing trends over time alongside best practices in other jurisdictions. The following pages include dashboards and graphs that show 2025 results and track trends over time.

As we reflect on progress toward the 2025 targets, we are also planning actions towards the 2030 targets, including new ways of working with collaborators.

In 2025, we:



Surpassed the **25% target** for staff and medical staff commutes by public transit, car share, carpool, low-emissions vehicles and hospital shuttle



Surpassed the **33% target** for increasing waste recycled or composted at acute care owned sites



Surpassed the **50% target** for increasing waste recycled or composted at non-acute care owned sites

While we celebrate these milestones, we also recognize that we face challenges in meeting our targets, including the increasing impacts of climate change, growing demand for new health facilities, as well as funding and resource gaps. These results and insights provide context on our progress to delivering low-carbon, resilient care.

Legislated targets

In B.C., public sector organizations are expected to follow government requirements and meet set goals as outlined in [The Climate Change Accountability Act](#). The legislation sets ambitious greenhouse gas (GHG) emissions reduction targets (from a 2007 baseline) for public sector organizations:

40% by 2030 **60%** by 2040 **80%** by 2050

These targets include emissions from owned and leased buildings, the use of fleet vehicles, paper consumption and refrigerants.

The provincial government's [CleanBC Plan and Roadmap](#) sets even more ambitious targets for buildings and a specific target for fleet vehicles (from a 2010 baseline). The targets for all public sector organizations are:

50%
reduction in emissions
for public sector
buildings **by 2030**

40%
reduction in fleet vehicle
emissions **by 2030**

Navigation

[Table of contents](#)

[Executive message](#)

[Our story](#)

[Our progress: Targets and dashboards](#)

[About our targets](#)

► [About our key performance indicators](#)

[Energy and carbon](#)

[Transportation](#)

[Waste](#)

[Water](#)

[Our leadership](#)

[Our partners](#)

[2025 GHG emissions and offsets summary table](#)

[Site by site emissions](#)

[References](#)

Related resources

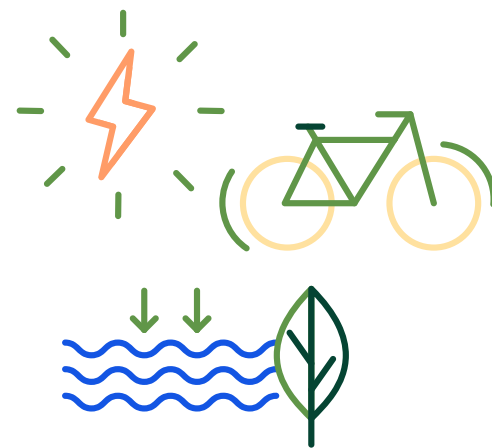
[Green+Leaders Annual Report](#)

[Methodology for Key Performance Indicators](#)

About our key performance indicators

We track progress across key performance indicators (KPIs) in greenhouse gas emissions, energy use, waste, transportation and water. These KPIs are informed by legislated requirements, data availability and research into methodology best practices. Together, they provide a comprehensive picture of our progress.

[+ Learn more about the methodology for calculating KPIs](#)



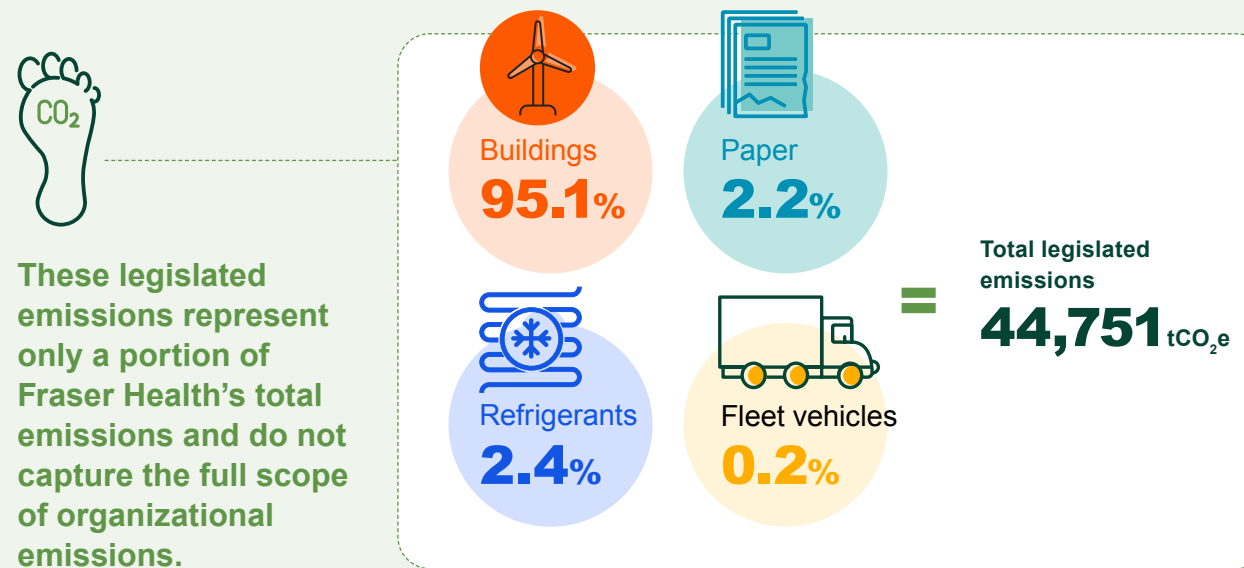
As a leader in environmentally sustainable and high-quality, low-carbon, resilient care, Fraser Health recognizes that meaningful climate action extends beyond legislated emissions reporting. Work to minimize adverse impacts on the natural environment is not simply a regulatory requirement; it is an essential component of delivering excellent care to the communities we serve.

In 2025, health authorities across B.C. came together to develop a standardized methodology and calculator for all sources of health care emissions beyond legislated requirements. The results (expected mid-2026) will help us better understand emissions from individual sources,

including our supply chain, and prioritize further reductions in the future. For example, a source of health care emissions that has not previously been included in reporting is staff and medical staff use of personal vehicles to deliver clinical and non-clinical services. While emissions from Fraser Health-owned and leased fleet vehicles are measured, emissions from staff and medical staff use of personal vehicles were not previously tracked. In 2025, staff and medical staff travel using personal vehicles was quantified for the first time, totalling 23.4 million km and generating over 4,000 tonnes of CO₂ — 48 times the emissions currently reported from the Fraser Health fleet.

2025 Fraser Health legislated GHG emissions

There are four sources of emissions that are legislated for reporting.



These legislated emissions represent only a portion of Fraser Health's total emissions and do not capture the full scope of organizational emissions.

Percentages in the above figure may not total 100 per cent due to rounding.

2025 Fraser Health

Climate Change Accountability Report (CCAR)

Navigation

Table of contents

Executive message

Our story

Our progress: Targets and dashboards

About our targets

About our key performance indicators

▶ Energy and carbon

Transportation

Waste

Water

Our leadership

Our partners

2025 GHG emissions and offsets summary table

Site by site emissions

References

Related resources

[Green+Leaders Annual Report](#)

[Methodology for Key Performance Indicators](#)



Energy and carbon

	Key performance indicator (metric)	2025 results	2030 target
Legislated targets	CCAA target: total GHG emissions from owned and leased buildings, fleet vehicles, paper use and refrigerants from 2007 levels (% change of tCO ₂ e*/year)	-13%**	40%
	CleanBC target: total GHG emissions from owned and leased buildings from 2010 levels (% change of tCO ₂ e*/year)	-17%**	50%
	Amount of GHG emissions generated per usable floor area of owned and leased buildings from 2010 levels (% change of tCO ₂ e*/m ² /year)	12%**	50%
	Amount of energy used per usable floor area of owned buildings [□] from 2007 levels (% change of kWh/m ² /year)	8%	25%

- On track to meet target
- Slow progress toward target
- Behind schedule to meet target and requires attention

- * tCO₂e refers to tonnes of carbon dioxide equivalent.
- ** In 2025, a significant increase in the emissions factor for purchased electricity affected overall emissions performance.

Understanding results

- ▶ Fraser Health has grown significantly since the baseline years used to establish these targets. Growth in the building portfolio and expansion of health care services have increased energy consumption and emissions.
- ▶ Many sites lack the electrical capacity required to support low-carbon electrification, while limited capital funding for major low-carbon energy retrofits constrains opportunities for significant emissions reductions.
- ▶ Operational requirements specific to health-care environments, including strict ventilation and infection control processes, restrict the opportunity of certain energy and emission reduction solutions.

Navigation

[Table of contents](#)

[Executive message](#)

[Our story](#)

[Our progress: Targets and dashboards](#)

[About our targets](#)

[About our key performance indicators](#)

[▶ Energy and carbon](#)

[Transportation](#)

[Waste](#)

[Water](#)

[Our leadership](#)

[Our partners](#)

[2025 GHG emissions and offsets summary table](#)

[Site by site emissions](#)

[References](#)

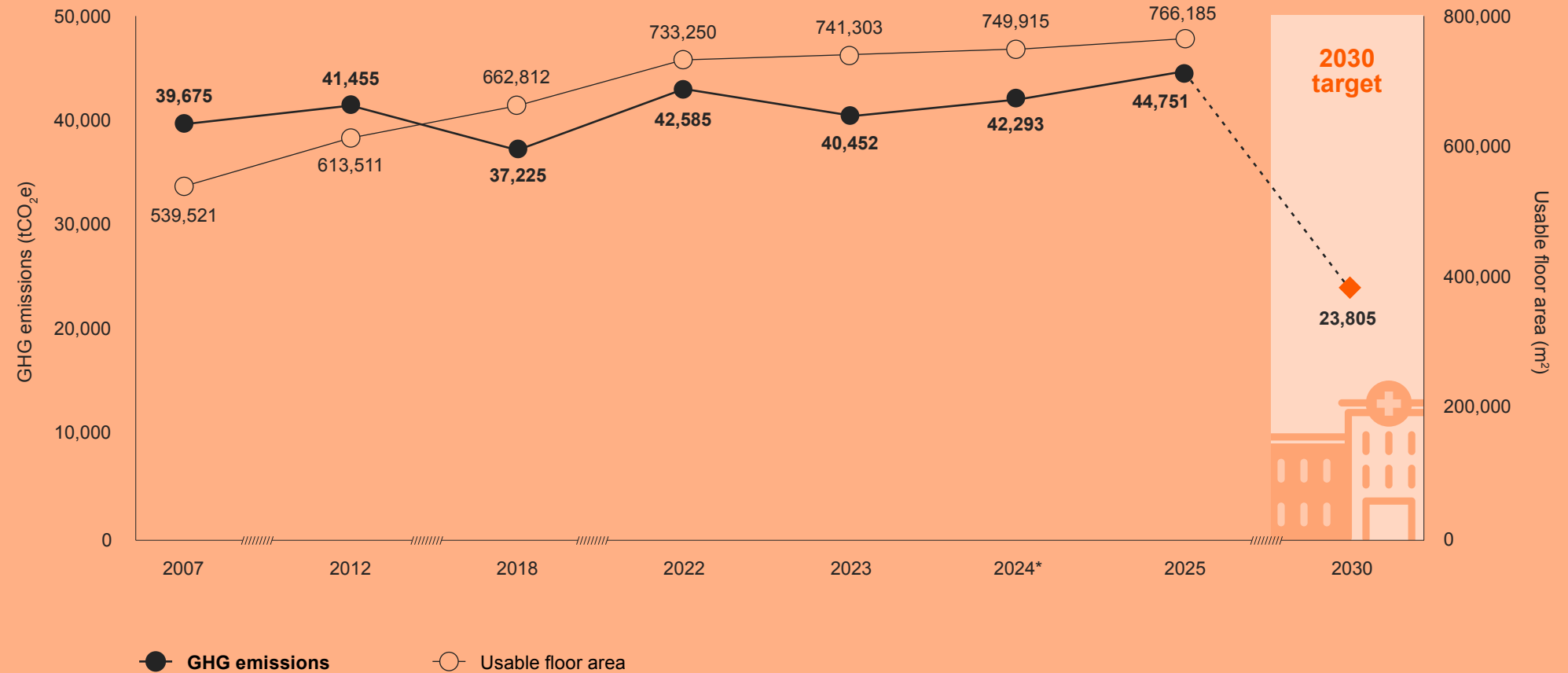
Related resources

[Green+Leaders Annual Report](#)

[Methodology for Key Performance Indicators](#)

GHG emissions and usable floor area

Emissions from buildings, fleet, paper and refrigerants



* 2024 was the first year refrigerants were included in reported emissions data.

Navigation

Table of contents

Executive message

Our story

Our progress: Targets and
dashboards

About our targets

About our key performance
indicators

▶ Energy and carbon

Transportation

Waste

Water

Our leadership

Our partners

2025 GHG emissions and
offsets summary table

Site by site emissions

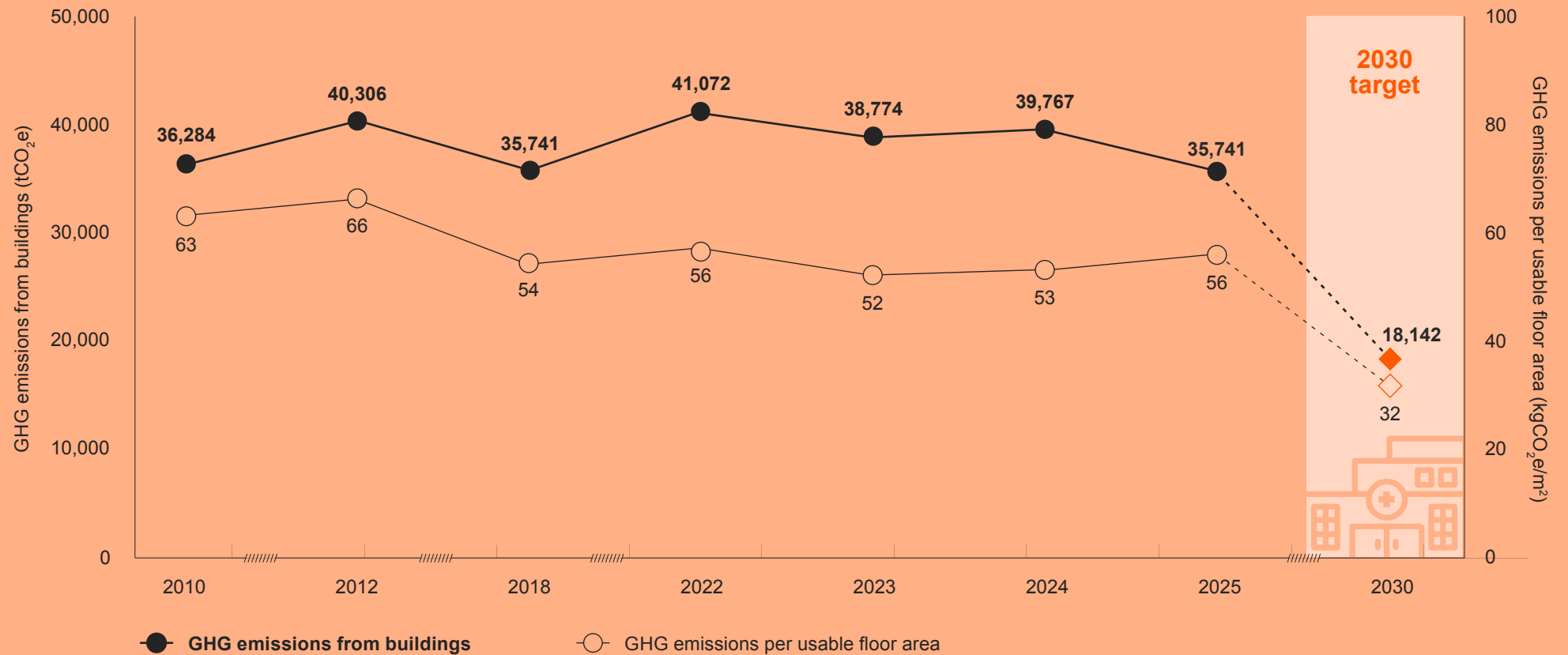
References

Related resources

[Green+Leaders Annual Report](#)

[Methodology for Key Performance
Indicators](#)

GHG emissions from buildings and GHG emissions per usable floor area



Navigation

[Table of contents](#)

[Executive message](#)

[Our story](#)

[Our progress: Targets and dashboards](#)

[About our targets](#)

[About our key performance indicators](#)

[Energy and carbon](#)

[Transportation](#)

[Waste](#)

[Water](#)

[Our leadership](#)

[Our partners](#)

[2025 GHG emissions and offsets summary table](#)

[Site by site emissions](#)

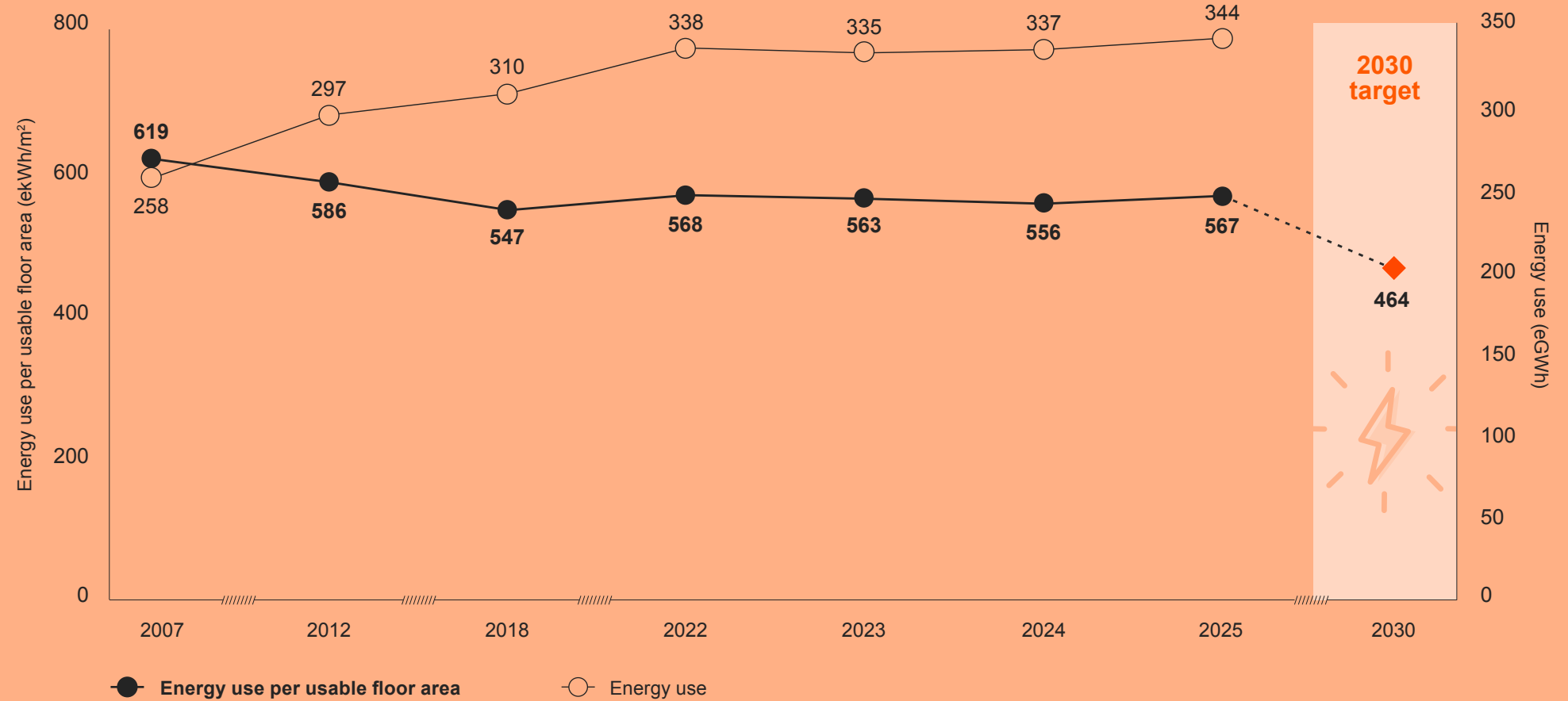
[References](#)

Related resources

[Green+Leaders Annual Report](#)

[Methodology for Key Performance Indicators](#)

Energy use and energy use per usable floor area*



* Applicable to owned buildings only.

2025 Fraser Health

Climate Change Accountability Report (CCAR)

Navigation

[Table of contents](#)

[Executive message](#)

[Our story](#)

[Our progress: Targets and dashboards](#)

[About our targets](#)

[About our key performance indicators](#)

[Energy and carbon](#)

▶ [Transportation](#)

[Waste](#)

[Water](#)

[Our leadership](#)

[Our partners](#)

[2025 GHG emissions and offsets summary table](#)

[Site by site emissions](#)

[References](#)

Related resources

[Green+Leaders Annual Report](#)

[Methodology for Key Performance Indicators](#)



Transportation

Key performance indicator (metric)	2025 results	2030 target
Percentage of staff and medical staff commuting by active transportation (annual average)*	5%	30%
Percentage of staff and medical staff commuting by clean transportation (annual average)*	37%	45%

- On track to meet target
- Slow progress toward target
- Behind schedule to meet target and requires attention

* Data from the 2026 GreenCare survey^E.

Understanding results

Meeting transportation goals in the Fraser Health region is challenging due to fragmented municipal infrastructure, limited transit connectivity and the long distances many employees travel between home and work. These conditions can make active transportation impractical and public transit either unavailable or inefficient for daily commuting.

Transit incentives, carpool programs and shuttle services are helping shift commuting patterns. Since 2020, commuting by gas- and diesel-powered vehicles has steadily decreased, while public transit use and commuting by electric vehicle have increased.

Understanding clean and active transportation

Active transportation is powered by people, often with light electric assistance. This includes:

- Walking
- Cycling
- Wheelchair use
- Seated electric scooters

Clean transportation includes lower-emission options that reduce reliance on single-occupancy, gas-powered vehicles. This includes:

- Public transit
- Carpooling
- Car share programs
- Electric and plug-in hybrid vehicles
- Hospital shuttle services

Navigation

[Table of contents](#)

[Executive message](#)

[Our story](#)

Our progress: Targets and dashboards

[About our targets](#)

[About our key performance indicators](#)

[Energy and carbon](#)

▶ [Transportation](#)

[Waste](#)

[Water](#)

Our leadership

Our partners

2025 GHG emissions and offsets summary table

Site by site emissions

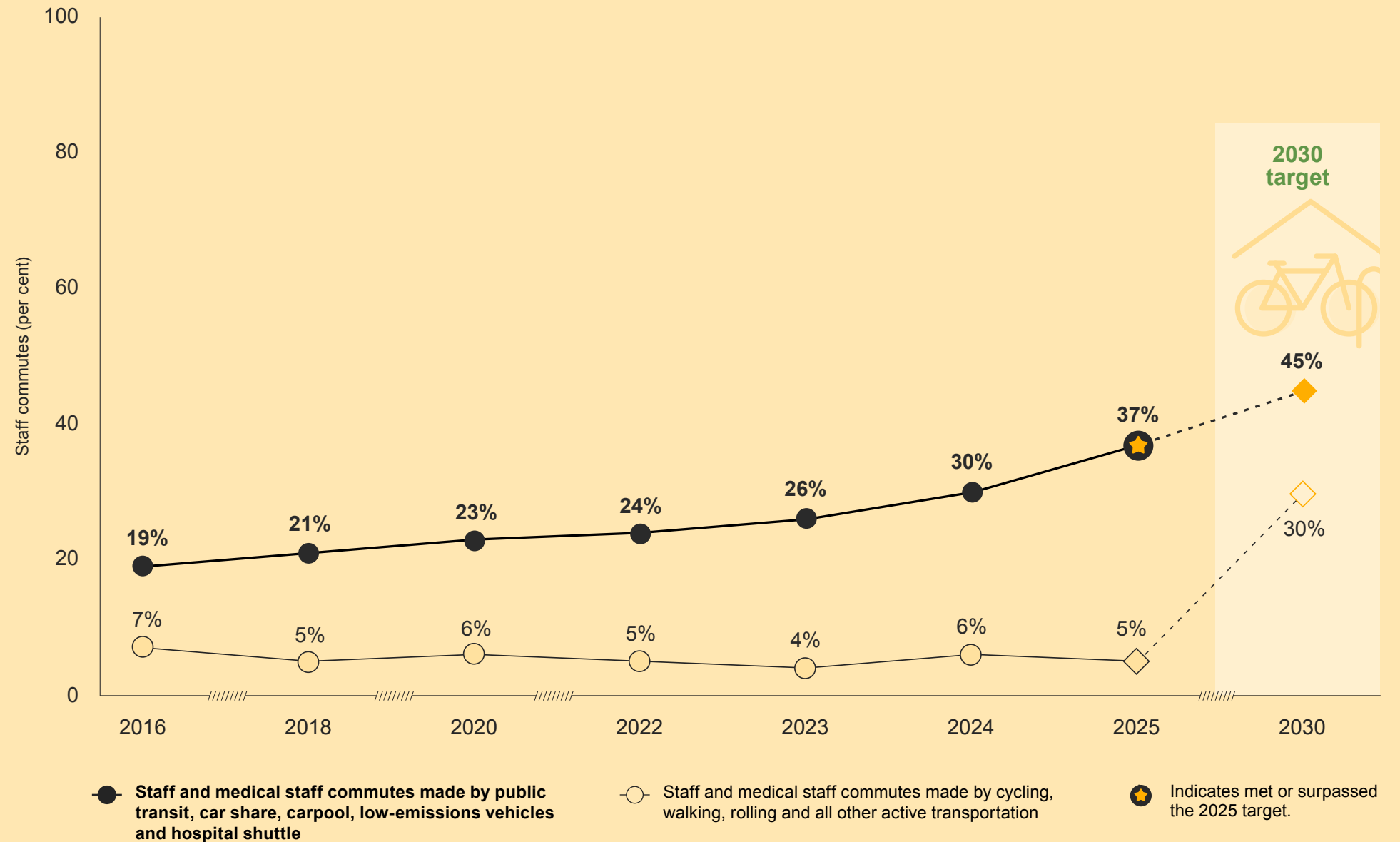
References

Related resources

[Green+Leaders Annual Report](#)

[Methodology for Key Performance Indicators](#)

Staff and medical staff commuting



2025 Fraser Health

Climate Change Accountability Report (CCAR)

Navigation

[Table of contents](#)

[Executive message](#)

[Our story](#)

[Our progress: Targets and dashboards](#)

[About our targets](#)

[About our key performance indicators](#)

[Energy and carbon](#)

[Transportation](#)

[▶ Waste](#)

[Water](#)

[Our leadership](#)

[Our partners](#)

[2025 GHG emissions and offsets summary table](#)

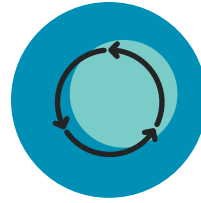
[Site by site emissions](#)

[References](#)




Related resources




[Green+Leaders Annual Report](#)

[Methodology for Key Performance Indicators](#)



Waste

Key performance indicator (metric)*	2025 results	2030 target
Waste recycled or composted in acute care owned sites ^E (% recycled, annual average)	37%	40% 
Waste recycled or composted in non-acute care owned sites ^G (% recycled, annual average)	52%	60% 
Waste generated per usable floor area in acute care owned sites (kg/m ² /year)	24.1	12.3 
Waste generated per usable floor area in non-acute care owned sites (kg/m ² /year)	21.1	17.3 

-  On track to meet target
-  Slow progress toward target
-  Behind schedule to meet target and requires attention

* Does not apply to leased buildings because waste management is the responsibility of the property manager and is not overseen by Fraser Health.

Understanding Results

▶ Recycling

Contamination in recycling streams can lead vendors to pause service and make it difficult to reinstate a site once materials are considered high risk. Additionally, fluctuations in national and international plastics markets can reduce the value of certain materials, making some plastics no longer viable to separate for recycling.

▶ Waste

The target for waste generated per usable floor area is increasingly difficult to meet as we add and report new waste streams, sites expand services and care activity levels rise. In 2026 we will review the waste generated per usable floor area metric and re-evaluate the 2030 target.

- ▶ Biomedical waste, which was not included before 2024, is now included to provide a more complete picture of our waste footprint.
- ▶ Initiatives such as Choosing Wisely and Reusables First help reduce unnecessary medical waste, while renovation, construction and deconstruction activities can also influence a site's waste generation per floor area.

2025 Fraser Health

Climate Change
Accountability Report
(CCAR)

Navigation

[Table of contents](#)

[Executive message](#)

[Our story](#)

[Our progress: Targets and dashboards](#)

[About our targets](#)

[About our key performance indicators](#)

[Energy and carbon](#)

[Transportation](#)

[Waste](#)

[Water](#)

[Our leadership](#)

[Our partners](#)

[2025 GHG emissions and offsets summary table](#)

[Site by site emissions](#)

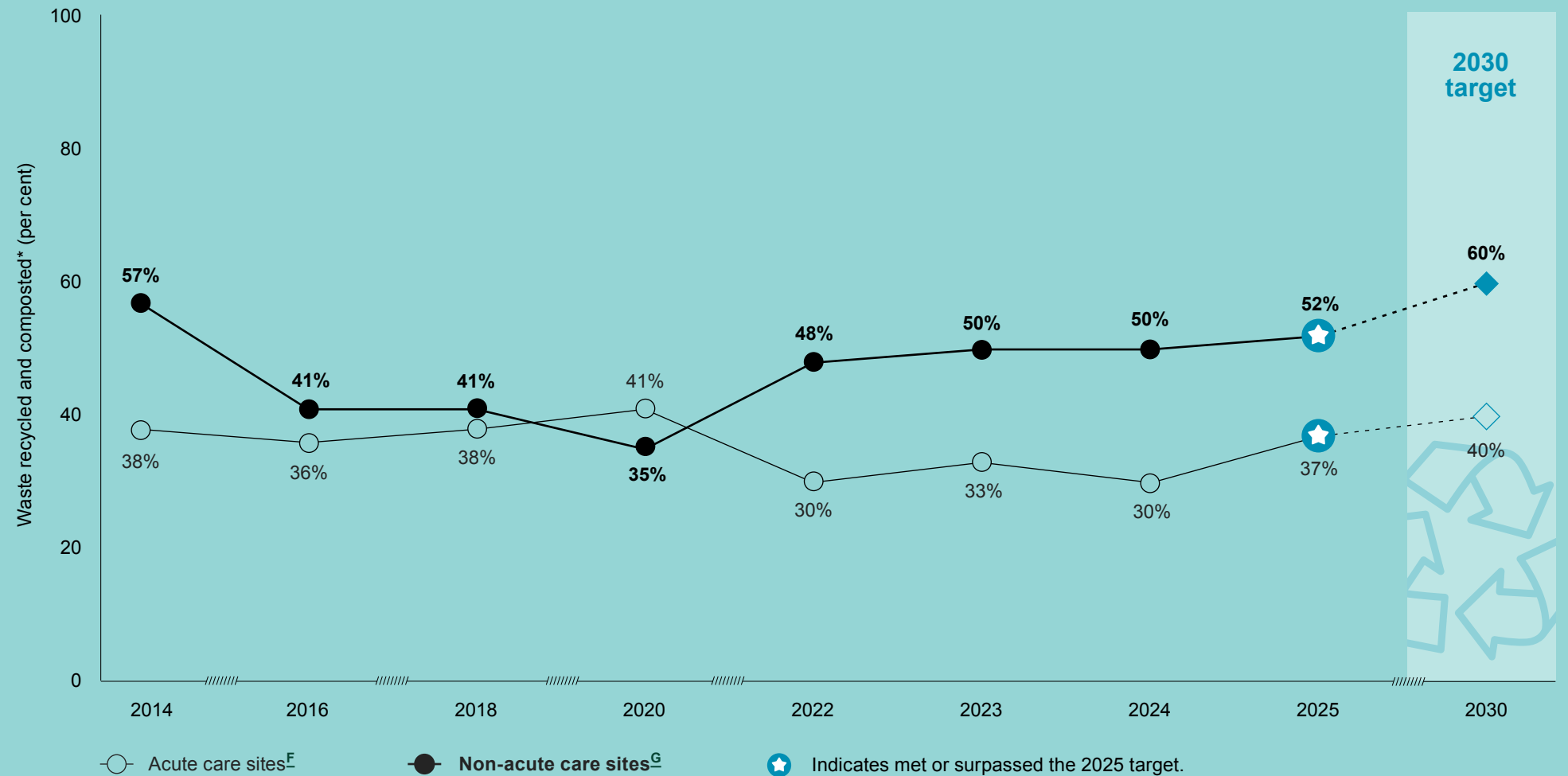
[References](#)

Related resources

[Green+Leaders Annual Report](#)

[Methodology for Key Performance Indicators](#)

Recycling rates



* Recycling streams: cardboard, soft plastics, mixed recycling, contrast glass, organics, confidential paper shredding, PPE recycling, e-waste, Styrofoam, furniture, batteries and inhalers.

Navigation

[Table of contents](#)

[Executive message](#)

[Our story](#)

[Our progress: Targets and dashboards](#)

[About our targets](#)

[About our key performance indicators](#)

[Energy and carbon](#)

[Transportation](#)

▶ [Waste](#)

[Water](#)

[Our leadership](#)

[Our partners](#)

[2025 GHG emissions and offsets summary table](#)

[Site by site emissions](#)

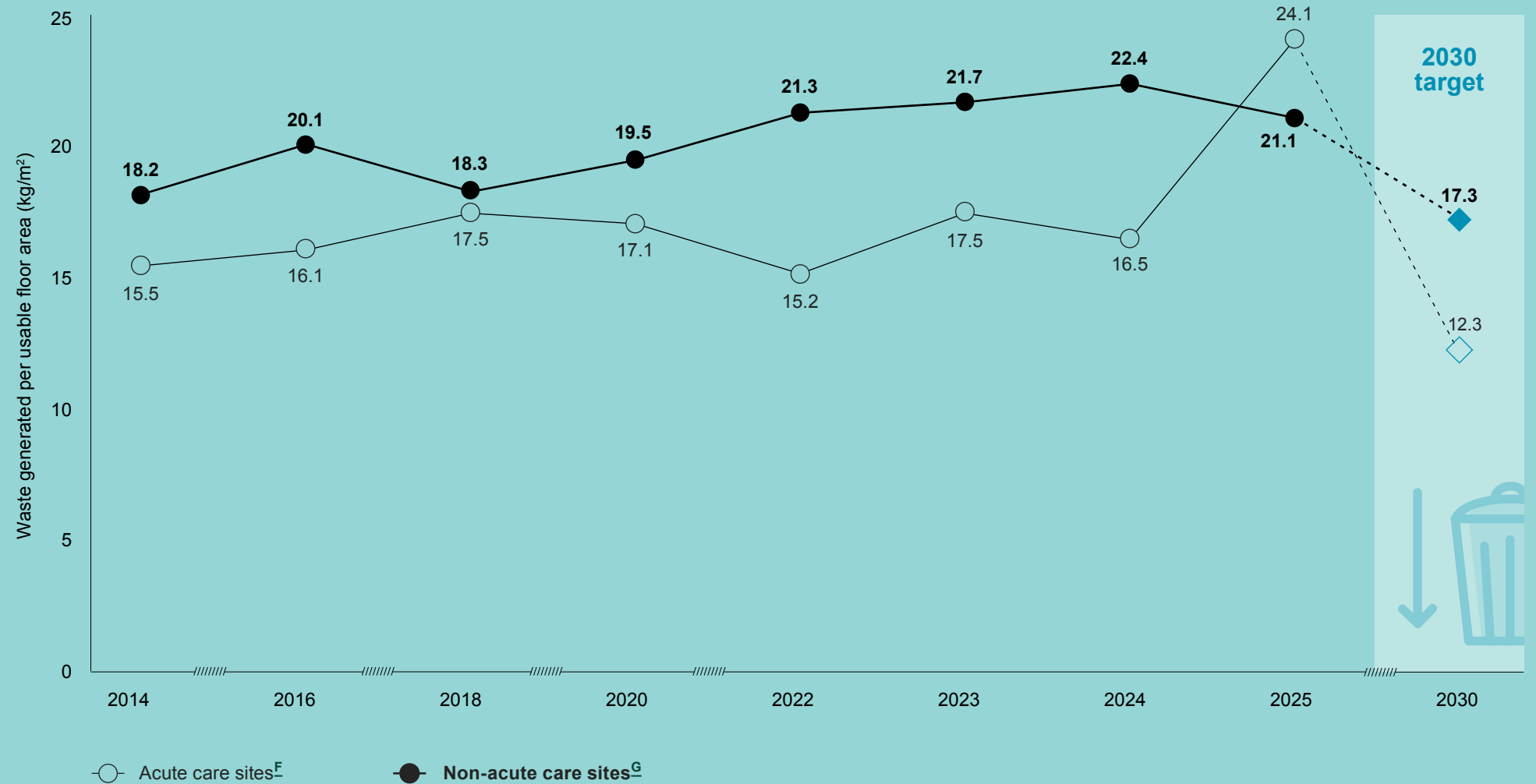
[References](#)

Related resources

[Green+Leaders Annual Report](#)

[Methodology for Key Performance Indicators](#)

Waste generation per usable floor area



2025 Fraser Health

Climate Change Accountability Report (CCAR)

Navigation

[Table of contents](#)

[Executive message](#)

[Our story](#)

[Our progress: Targets and dashboards](#)

[About our targets](#)

[About our key performance indicators](#)

[Energy and carbon](#)

[Transportation](#)

[Waste](#)

[▶ Water](#)

[Our leadership](#)

[Our partners](#)

[2025 GHG emissions and offsets summary table](#)

[Site by site emissions](#)

[References](#)

Related resources

[Green+Leaders Annual Report](#)

[Methodology for Key Performance Indicators](#)



Water

Key performance indicator (metric)	2025 results	2030 target
Decrease the amount of water used per usable floor area in owned ^H buildings from 2010 levels (% change of m ³ /m ² /year)	12%	35%

- On track to meet target
- Slow progress toward target
- Behind schedule to meet target and requires attention

Understanding results

- ▶ Fraser Health has grown significantly since the baseline years used to establish these targets. Growth in the building portfolio and expansion of health care services have resulted in increased water use.
- ▶ Commercial water-saving features, such as low-flow fixtures, are not suitable for many clinical settings due to sanitation and operational requirements.
- ▶ Our ability to effectively monitor water use across sites is limited, primarily due to insufficient sub-metering infrastructure. As a result, it is challenging to accurately identify issues, target opportunities for improvement and implement timely corrective actions.

Navigation

[Table of contents](#)

[Executive message](#)

[Our story](#)

[Our progress: Targets and dashboards](#)

[About our targets](#)

[About our key performance indicators](#)

[Energy and carbon](#)

[Transportation](#)

[Waste](#)

[Water](#)

[Our leadership](#)

[Our partners](#)

[2025 GHG emissions and offsets summary table](#)

[Site by site emissions](#)

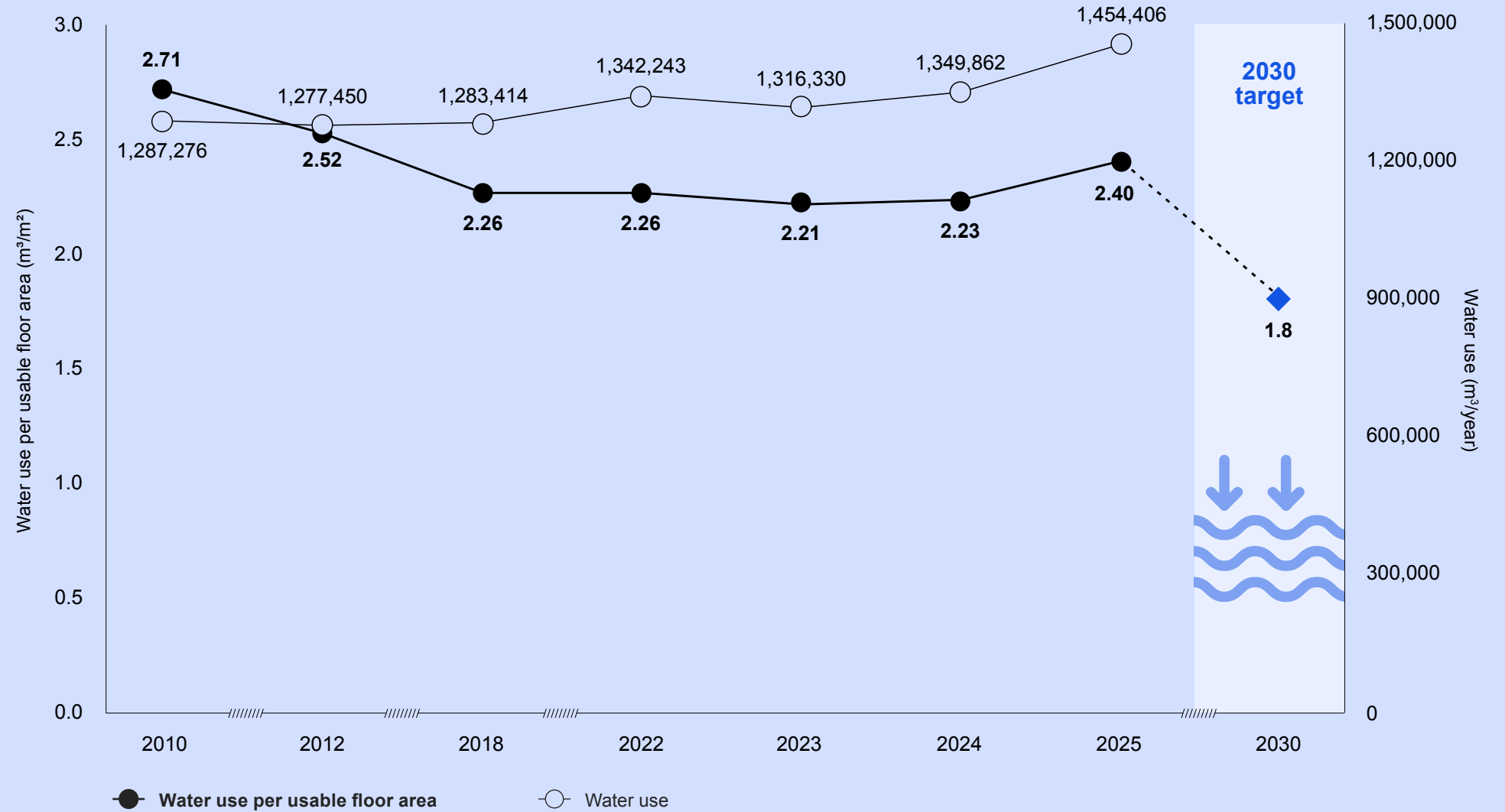
[References](#)

Related resources

[Green+Leaders Annual Report](#)

[Methodology for Key Performance Indicators](#)

Water use* and water use per usable floor area



* Water use is not metered in all areas of facility space^H.

2025 Fraser Health

Climate Change Accountability Report (CCAR)

Navigation

[Table of contents](#)

[Executive message](#)

[Our story](#)

[Our progress: Targets and
dashboards](#)

► [Our leadership](#)

[Climate risk management](#)

[Buildings](#)

[Fleet vehicles and transportation](#)

[Paper](#)

[Refrigerants](#)

[Improving patient care
with sustainability](#)

Our partners

[2025 GHG emissions and
offsets summary table](#)

[Site by site emissions](#)

[References](#)

Related resources

[Green+Leaders Annual Report](#)

[Methodology for Key Performance
Indicators](#)

Our leadership

Fraser Health embraces sustainability through initiatives that reduce emissions, enhance climate resilience and improve our operational practices. We are committed to responding to evolving climate challenges while maintaining our exceptional standards for care. The following highlights showcase our recent progress.

Navigation

Table of contents

Executive message

Our story

Our progress: Targets and
dashboards

Our leadership

► Climate risk management

Buildings

Fleet vehicles and transportation

Paper

Refrigerants

Improving patient care
with sustainability

Our partners

2025 GHG emissions and
offsets summary table

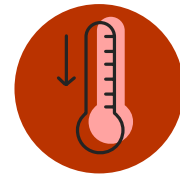
Site by site emissions

References

Related resources

[Green+Leaders Annual Report](#)

[Methodology for Key Performance
Indicators](#)



Climate risk management

Select 2025 actions and achievements

► **Building for the future**

Integrated climate considerations into major capital projects, including Burnaby Hospital, the new Surrey Hospital and BC Cancer Centre, and multiple long-term care facilities, with a focus on enhanced cooling capacity, indoor air quality and preparedness for extreme weather events.

► **Climate resilience planning tools**

Applied climate resilience planning tools, including the climate exposure screen and climate vulnerability survey, at Heritage Village and Fraser Canyon Hospital. Results are informing capital planning, asset management and site-specific adaptation priorities.

► **Low-carbon and climate resilient infrastructure**

Implemented infrastructure and system improvements, including HVAC upgrades, electrification projects and optimization initiatives that improve system reliability, thermal comfort during extreme heat and overall building performance.

► **Indoor air quality**

Advanced indoor air quality resilience through the development of a Clean Indoor Air Action Plan, site-specific assessments and updates to technical design requirements to incorporate extreme heat stress testing and performance-based design.

► **Emergency preparedness**

Strengthened emergency preparedness and seasonal readiness through enhanced alerting systems, infrastructure upgrades and operational readiness measures such as generators, boilers and staffing plans. Lessons learned from recent extreme weather events informed training, cross-site planning and continuity-of-care of planning.

► **Community member protection**

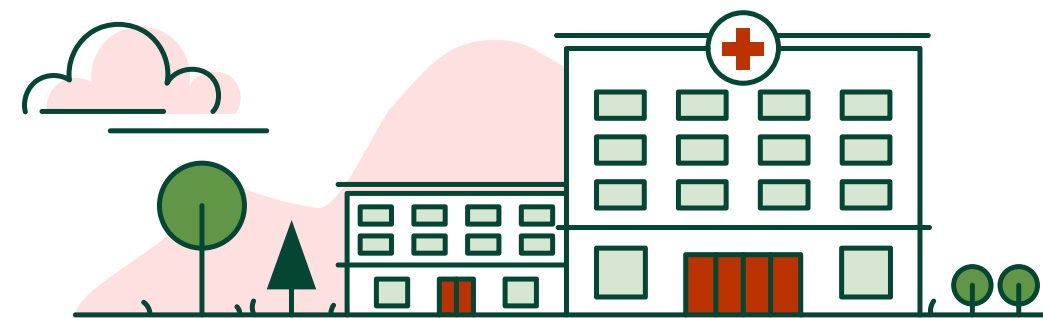
Prioritized protection of vulnerable populations through coordination of shelter capacity, warming centres, targeted outreach to at-risk groups and support for Indigenous communities in emergency planning and response.

► **Climate resilience collaboration**

Advanced community climate resilience through partnerships with local governments and organizations, contributions to Official Community Plans, advocacy for cooling-related bylaws and use of population and environmental risk data to identify and support high-risk populations.

► **Public education and capacity building**

Delivered public education, training, and capacity building on climate-related health risks, including extreme heat, wildfire smoke and cold exposure, while engaging staff, medical staff, partners and communities to support informed action.



2025 Fraser Health Climate Change Accountability Report (CCAR)

Navigation

[Table of contents](#)

[Executive message](#)

[Our story](#)

[Our progress: Targets and dashboards](#)

Our leadership

▶ [Climate risk management](#)

[Buildings](#)

[Fleet vehicles and transportation](#)

[Paper](#)

[Refrigerants](#)

[Improving patient care with sustainability](#)

Our partners

[2025 GHG emissions and offsets summary table](#)

[Site by site emissions](#)

[References](#)

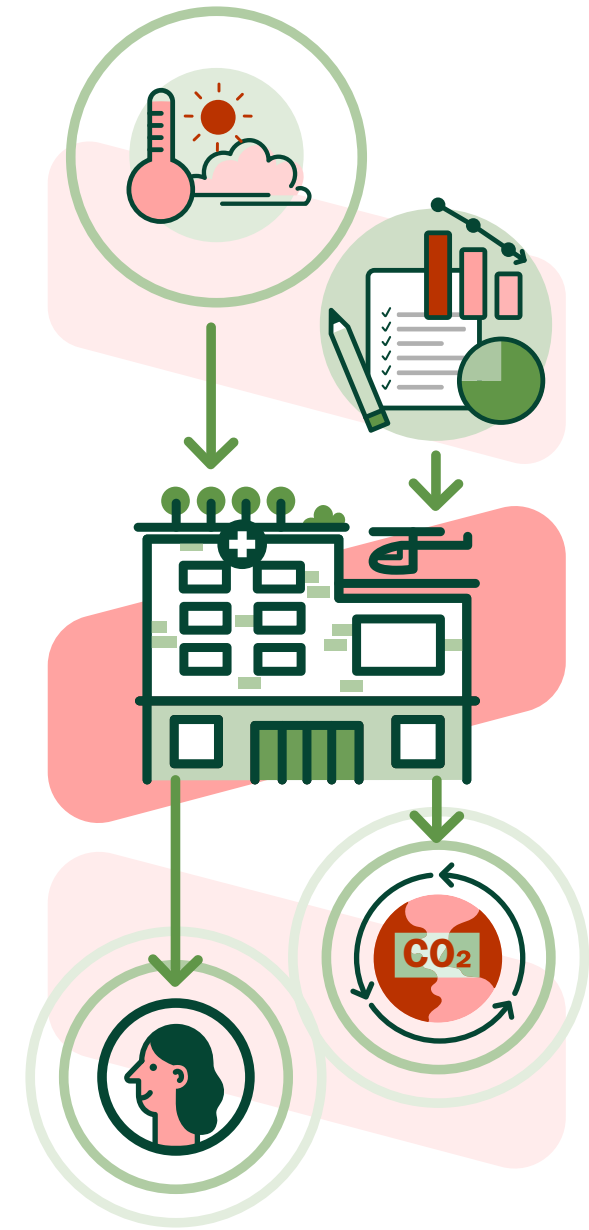
Related resources

[Green+Leaders Annual Report](#)

[Methodology for Key Performance Indicators](#)

Plans moving forward

- ▶ Advancing a Low Carbon Resilience Transition Plan to align infrastructure renewal with emissions reduction, future climate conditions, including 2050 and 2080 projections, and continuity of care while avoiding stranded assets.
- ▶ Expanding climate resilience planning and assessment activities, including climate vulnerability surveys and climate exposure screening, to build a portfolio-wide understanding of risks and inform master planning, capital investment, asset renewal and retrofit prioritization.
- ▶ Advancing technical studies and system planning to address key climate risks, including cooling demand, electrical capacity, load forecasting, demand response, energy storage and enhanced system monitoring, to support proactive infrastructure management.
- ▶ Progressing business case development and pilot projects to better quantify the costs, benefits and risks of resilience measures, supporting more informed capital planning and investment decisions.
- ▶ Strengthening integration of climate resilience across facilities, energy and environmental sustainability, capital planning, clinical operations and emergency management to support consistent implementation across projects and operations.
- ▶ Strengthening emergency preparedness and response planning, including flood preparedness, seasonal readiness and coordination with internal teams and external partners.
- ▶ Supporting vulnerable populations through targeted outreach, culturally informed planning and collaboration with public health, Indigenous partners and community organizations to strengthen preparedness for extreme heat, wildfire smoke, flooding and other climate-related health risks.
- ▶ Advancing climate-health knowledge, partnerships and community resilience through collaboration with local governments, academic institutions and health partners, alongside continued development of guidance, tools and communication resources.



Navigation

Table of contents

Executive message

Our story

Our progress: Targets and
dashboards

Our leadership

Climate risk management

▶ Buildings

Fleet vehicles and transportation

Paper

Refrigerants

Improving patient care
with sustainability

Our partners

2025 GHG emissions and
offsets summary table

Site by site emissions

References

Related resources

[Green+Leaders Annual Report](#)

[Methodology for Key Performance
Indicators](#)



Buildings

Select 2025 actions and achievements

▶ **Solar thermal project**

Successfully installed a solar thermal system at Queen's Park Care Centre, improving hot water pre-heating with renewable energy. The project is expected to reduce natural gas use by 2,173 gigajoules and emissions by 106 tCO₂e annually, supporting low-carbon operations.

▶ **Heat recovery projects**

- Installed a new heat recovery chiller at Peace Arch Hospital that captures and reuses waste energy, with projected savings of 3,996 gigajoules of natural gas and emissions reductions of 196 tCO₂e annually.
- Upgraded heat recovery systems and boiler controls at Eagle Ridge Hospital, improving efficiency and reducing energy consumption. The upgrades are expected to save 1,065 gigajoules of natural gas and reduce emissions by 52 tCO₂e annually through improved system integration.

▶ **Hot water project**

Improved the domestic hot water system at Fellburn Care Centre by installing a heat exchanger to reduce energy demand. The project is expected to save 238 gigajoules of natural gas and reduce emissions by 12 tCO₂e annually, supporting a more sustainable and resilient facility.

▶ **Fan wall projects**

Replaced existing fans in four air-handling units in the A and C Wings of Chilliwack General Hospital with variable-speed, high-efficiency fan walls. Also installed new variable-speed fan walls for three cold-deck supply fans at Langley Memorial Hospital. Together, the projects resulted in electrical energy savings of 394,844 kilowatt-hours.

Fraser Health proactively partners with utility companies to fund energy-efficiency and emissions-reduction initiatives, reinvesting revenue into infrastructure and operations that improve risk management alongside energy and emissions management. In 2025, we generated \$280,000 in capital revenue and \$335,000 in operating revenue, helping reduce operational financial pressures, fund studies to support data-informed decision-making, test innovative technologies and support business cases for capital project implementation.

▶ **Energy efficiency research studies**

- Completed custom studies at Peace Arch Hospital, Ridge Meadows Hospital and Chilliwack General Hospital to identify opportunities for energy conservation measures.
- Completed an energy modelling study of a thermal gradient header, heat recovery chiller and enthalpy wheels to inform heating, cooling and ventilation system design for new long-term care construction projects. These technologies improve energy-efficiency by capturing and reusing internal building energy. Study results indicated a 15 per cent increase in energy efficiency and a 60 per cent reduction in carbon emissions compared to the base design.

▶ **Staff and medical staff engagement in energy-saving campaigns**

- Engaged food services staff at Queen's Park Care Centre to identify energy-saving opportunities and promote energy-efficient behaviours through a digital campaign and educational huddles.
- Engaged facilities maintenance, operations staff and clinical teams at Eagle Ridge Hospital to monitor the energy consumption of four blanket warmers and installed switches to shut them down when not in use. The pilot resulted in energy savings of 45 per cent compared to the baseline.

▶ **Building electrification design**

Designed the new Surrey Hospital and BC Cancer Centre as a fully electrified acute care facility while advancing plans for large-scale battery energy storage to support long-term resilience, reliability and emissions reduction.

2025 Fraser Health Climate Change Accountability Report (CCAR)

Navigation

Table of contents

Executive message

Our story

Our progress: Targets and
dashboards

Our leadership

Climate risk management

▶ Buildings

Fleet vehicles and transportation

Paper

Refrigerants

Improving patient care
with sustainability

Our partners

2025 GHG emissions and
offsets summary table

Site by site emissions

References

Related resources

[Green+Leaders Annual Report](#)

[Methodology for Key Performance
Indicators](#)

Plans moving forward

- ▶ Evaluating and addressing climate-related risks such as wildfires, extreme heat and flooding across facilities and surrounding communities, while implementing low carbon resilience strategies to support continuity of care.
- ▶ Collaborating with project compliance teams to embed energy and carbon performance targets into design and construction. Establishing future-ready infrastructure by pursuing green building certifications such as Leadership in Energy and Environmental Design (LEED) while meeting or exceeding environmental and climate change legislation requirements.
- ▶ Partnering with Engineering and Operations teams to identify energy and emissions reduction opportunities and improve energy efficiency through the continuous optimization program. Implementing ambitious energy retrofits at existing facilities alongside low-emission designs for new construction, while making system-level changes during infrastructure renewal to create lower-impact facilities.
- ▶ Adding energy performance metrics to the Sustainability Report and Engineering & Operations dashboards to support improved energy management. This includes developing a direct digital control multi-site energy dashboard and piloting it at Eagle Ridge Hospital, as well as implementing sub-metering for electric vehicle charging circuits to ensure data integrity for low carbon fuel standard reporting.
- ▶ Developing a comprehensive decision-making framework that targets load reduction, heat recovery, fuel switching and other emissions-reduction strategies while improving indoor environmental quality for staff, medical staff and patients. This carbon reduction roadmap will guide future capital planning and operational improvements across the health care system.



Launched the updated [Low Carbon Resilience and Environmental Sustainability Guidelines](#) for Health Care New Construction. The revised format improves clarity and ease of use for project managers and consultants, helping teams embed climate resilience, emissions reduction and environmental sustainability into project design and construction.

Navigation

[Table of contents](#)

[Executive message](#)

[Our story](#)

[Our progress: Targets and
dashboards](#)

Our leadership

[Climate risk management](#)

[Buildings](#)

▶ [Fleet vehicles and transportation](#)

[Paper](#)

[Refrigerants](#)

[Improving patient care
with sustainability](#)

Our partners

[2025 GHG emissions and
offsets summary table](#)

[Site by site emissions](#)

[References](#)

Related resources

[Green+Leaders Annual Report](#)

[Methodology for Key Performance
Indicators](#)



Fleet vehicles and transportation

Select 2025 actions and achievements

- ▶ **Facility design guidelines for electric devices**
Created clear design guidelines to support the design and construction of facilities for electric devices such as e-bikes and e-scooters. The guidelines reduce safety risks, improve consistency across health care sites and support more sustainable travel options.
- ▶ **Active transportation study**
Completed an active transportation accessibility scan reviewing how easy it is to walk, bike, roll or take public transit to 25 Fraser Health sites. This work identified barriers and opportunities to improve access and enable staff and medical staff to travel by active and public transit modes.
- ▶ **Electric mobility community of practice**
Launched an Electric Mobility Community of Practice that brings together teams from across the health system to share knowledge on topics such as electric vehicle fleets and safe storage for e-bikes and e-scooters.
- ▶ **Commuting by public transit**
Increased staff and medical staff participation in the Transit Incentive Program by an additional 400 participants in 2025. Increased shuttle ridership to Surrey Memorial Hospital and Burnaby Hospital by more than 10 per cent, demonstrating growing engagement with programs that support public transit use.
- ▶ **Business-related vehicle use emissions**
Analyzed emissions from staff and medical staff using personal vehicles for work purposes. Identified potential opportunities to reduce transportation-related emissions and operational costs.

▶ Carpool program

Reduced the number of vehicles parked at acute care sites by 3,600 through the staff and medical staff carpool program.

Plans moving forward

- ▶ Continuing to expand measurement of transportation emissions beyond fleet vehicles to identify and target the most impactful opportunities for emissions reduction.
- ▶ Continuing to work collaboratively with transportation partners to address gaps and improve access to sustainable transportation options.
- ▶ Using an active transportation accessibility scan to tailor transportation strategies to Fraser Health sites.
- ▶ Continuing to work collaboratively with municipal and regional organizations to improve sustainable transportation access to Fraser Health sites.



Navigation

[Table of contents](#)

[Executive message](#)

[Our story](#)

[Our progress: Targets and
dashboards](#)

Our leadership

[Climate risk management](#)

[Buildings](#)

[Fleet vehicles and transportation](#)

[▶ Paper](#)

[▶ Refrigerants](#)

[Improving patient care
with sustainability](#)

Our partners

[2025 GHG emissions and
offsets summary table](#)

[Site by site emissions](#)

[References](#)

Related resources

[Green+Leaders Annual Report](#)

[Methodology for Key Performance
Indicators](#)



Paper

Select 2025 actions and achievements

▶ Switching to sugar sheet

In 2025, PHSA Procurement fully transitioned its largest Lower Mainland warehouse from virgin paper stock to 100 per cent sugar sheet stock, which is now the only option for printer paper orders for Fraser Health. This high-quality paper stock is produced with sugar cane pulp instead of wood fibre. The shift supports emissions reduction efforts, achieving up to 55 per cent lower life cycle GHG emissions and saving 26 trees per tonne of paper produced.

▶ Default double-sided printing

Changed the default settings on all networked printers at the Central City office to double-sided, black-and-white printing, significantly reducing paper waste.

Plans moving forward

- ▶ Continuing to scale default double-sided printing across Fraser Health sites.
- ▶ Promoting paperless invoicing within departments where operationally feasible.



Refrigerants

Select 2025 actions and achievements

▶ Refrigerant inventory expansion

Expanded the refrigerant inventory database to include large equipment such as chillers and condensing units, as well as smaller equipment such as refrigeration units, cold storage systems and heat pumps. This work improved visibility into emissions sources and strengthened data coverage across facilities.

▶ Unit-level reporting for large equipment

Continued unit-level tracking of refrigerant leakage and emissions from large equipment covered under regional maintenance contracts.

▶ Emissions estimation method improvements

Adopted an asset group-based method to estimate emissions for equipment not covered under maintenance contracts. Additional technical data, such as refrigerant type, charge quantity amount and leak-rate standards, was collected to support more accurate estimates.

Plans moving forward

- ▶ Continuing to expand the refrigerant inventory database to cover equipment at all owned sites and working with operators of leased sites to capture additional relevant data.
- ▶ Enhancing technical data collection to better track equipment performance and inform maintenance or upgrade decisions.

Navigation

Table of contents

Executive message

Our story

Our progress: Targets and dashboards

Our leadership

- Climate risk management
- Buildings
- Fleet vehicles and transportation
- Paper
- Refrigerants
- ▶ Improving patient care with sustainability

Our partners

2025 GHG emissions and offsets summary table

Site by site emissions

References

Related resources

- [Green+Leaders Annual Report](#)
- [Methodology for Key Performance Indicators](#)

Improving patient care with sustainability

Staff and medical staff across many disciplines and departments at Fraser Health are working together to improve sustainability in practical ways that support day-to-day care. This work improves the quality of service delivery and reduces operating costs while supporting better health outcomes and staff and medical staff well-being. The examples below show how we are reducing the environmental impact of our services while building a more resilient and effective health system.

Select 2025 actions and achievements



Discontinued use of piped nitrous oxide systems at Delta Hospital, Jim Pattison Outpatient Care and Surgery Centre in Surrey and Eagle Ridge Hospital. Nitrous oxide is

a potent greenhouse gas that also depletes the ozone layer. Its use in health care is declining due to environmental concerns and the availability of safer alternatives. Where still required, a shift to a portable supply systems significantly reduces emissions.

Piloted a multi-site initiative across three inpatient units to promote appropriate use of non-sterile nitrile gloves through staff education, point-of-care reminders, audits, surveys and purchasing data tracking, while monitoring and maintaining infection prevention and control standards. In B.C., health care uses approximately

800,000 gloves annually, some of which may be used unnecessarily. This initiative will help safely reduce unnecessary glove use.

Completed annual pollution prevention reports at nine sites, supporting efforts to reduce pollutant discharges and protect wastewater infrastructure and quality.



Phased out desflurane, a potent greenhouse gas used in anesthesia, at **10** of 11 sites.

Expanded the PPE recycling program to include Fraser Canyon Hospital and Langley Memorial Hospital. Launched a new inhaler recycling program at seven pilot sites.



Developed a provincial food strategy to coordinate sustainable food system actions through 2027, including shared governance, sustainability indicators, plant-forward menus, sustainable procurement and food waste reduction.



Awarded **\$160,000** in funding to develop an emissions methodology and calculator that will support a standardized provincial approach to baselining and tracking health care emissions.



Achieved recognition for using blood wisely at Abbotsford Regional Hospital and Cancer Centre and Surrey Memorial Hospital, guided by a Choosing Wisely Canada initiative to reduce unnecessary tests and treatments.

Customized sustainability criteria to evaluate procurement of clinical items across categories such as cardiac care, medicine, surgical care, diagnostics and pharmacy. Completed more than **35** supplier interviews, benchmarked the sustainability maturity of the top 100 suppliers and developed an engagement roadmap identifying opportunities for closer partnership.



Hosted two food sustainability fairs at Royal Columbian Hospital and Surrey Memorial Hospital, where more than **2,000 staff** and medical staff learned about and sampled plant-forward food. Organized a children's summer cooking camp that focused on plant-forward foods and sustainable practices in daily life.



2025 Fraser Health Climate Change Accountability Report (CCAR)

Navigation

[Table of contents](#)

[Executive message](#)

[Our story](#)

[Our progress: Targets and dashboards](#)

[Our leadership](#)

[Climate risk management](#)

[Buildings](#)

[Fleet vehicles and transportation](#)

[Paper](#)

[Refrigerants](#)

► [Improving patient care with sustainability](#)

[Our partners](#)

[2025 GHG emissions and offsets summary table](#)

[Site by site emissions](#)

[References](#)

Related resources

[Green+Leaders Annual Report](#)

[Methodology for Key Performance Indicators](#)

Impact stories



Fraser Canyon Hospital

Planning for tomorrow's climate, today



Fraser Health completed climate vulnerability surveys at two pilot sites: Fraser Canyon Hospital and Heritage Village. The surveys demonstrated how recent upgrades have reduced climate-related risks while also highlighting the importance of continuity of operations and emergency preparedness at remote facilities.

[Read more](#) ►



Solar thermal panels at Delta Hospital

Fraser Health's solar thermal strategy



Fraser Health has steadily expanded the installation of solar thermal panels across care facilities and continues to monitor their performance. Since 2024, these installations have collectively achieved nearly 12,000 GJ in natural gas savings and avoided approximately 600 tonnes of CO₂e emissions.

[Read more](#) ►



Fresh blueberries from a farm in Abbotsford ready for patient meal trays

Why not local? Fraser Health's vision for farm-to-hospital food



Fraser Health is expanding farm-to-hospital sourcing to bring fresh, local produce into patient meals, supporting farmers, improving nutrition and strengthening community ties. Pilot programs have successfully introduced seasonal foods such as blueberries and corn across multiple sites.

[Read more](#) ►



Cathy Giles, consultant; and Morgan Cartier, project lead and manager, Supply Utilization, Waste Management, Fraser Health

Optimizing equipment management for efficient, sustainable care



Fraser Health launched a region-wide project to better understand how equipment is stored, tracked and shared. Findings revealed how and where equipment is being used. At one site, a spring-cleaning initiative found that 42 per cent of removed equipment was still in working condition and could be redeployed.

[Read more](#) ►

2025 Fraser Health

Climate Change Accountability Report (CCAR)

Navigation

[Table of contents](#)

[Executive message](#)

[Our story](#)

[Our progress: Targets and
dashboards](#)

[Our leadership](#)

▶ [Our partners](#)

[2025 GHG emissions and
offsets summary table](#)

[Site by site emissions](#)

[References](#)

Related resources

[Green+Leaders Annual Report](#)

[Methodology for Key Performance
Indicators](#)

Our partners

We are grateful to the organizations listed below, whose partnership and collaboration have been instrumental in advancing our ongoing planetary health initiatives. We also work with a wide range of consultants who provide valuable expertise in support of this work. While we are not able to acknowledge everyone individually, we recognize and appreciate their ongoing contributions.

2025 Fraser Health

Climate Change Accountability Report (CCAR)

Navigation

[Table of contents](#)

[Executive message](#)

[Our story](#)

[Our progress: Targets and
dashboards](#)

[Our leadership](#)

► [Our partners](#)

[2025 GHG emissions and
offsets summary table](#)

[Site by site emissions](#)

[References](#)

Related resources

[Green+Leaders Annual Report](#)

[Methodology for Key Performance
Indicators](#)

Our partners

B

BC Centre for Disease Control
BC Emergency Health Services
BC Housing
BC Hydro
BC Institute of Technology
BC Ministry of Emergency Management and
Climate Readiness
BC Ministry of Energy and Climate Solutions
BC Ministry of Environment and Parks
BC Ministry of Health
BC Ministry of Infrastructure
BC Renal

C

Canadian Coalition for Green Health Care
CASCADES Canada
Climate Data Canada
Climate Solutions Division

E

Environment and Climate Change Canada

F

First Nations Health Authority
FortisBC

H

Health Canada
Health Emergency Management BC
Health Quality BC
Homelessness Services Association of BC

I

Interior Health
Island Health

L

Local and regional governments

M

Métis Nation British Columbia
MOSAIC

N

National Research Council of Canada
Northern Health
Nourish Leadership

P

Pacific Climate Impacts Consortium
Pacific Institute for Climate Solutions
Providence Health Care
Provincial Health Services Authority
Provincial Nursing Skin and Wound Committee

S

Simon Fraser University

U

University of British Columbia

V

Vancouver Coastal Health

Navigation

[Table of contents](#)

[Executive message](#)

[Our story](#)

[Our progress: Targets and dashboards](#)

[Our leadership](#)

[Our partners](#)

► [2025 GHG emissions and offsets summary table](#)

[Site by site emissions](#)

[References](#)

Related resources

[Green+Leaders Annual Report](#)

[Methodology for Key Performance Indicators](#)

2025 GHG emissions and offsets summary table

Fraser Health 2025 GHG emissions and offsets summary	
GHG emissions for the period January 1–December 31, 2025	
Total BioCO ₂	968
Total emissions (tCO ₂ e)	44,751
Total offsets (tCO ₂ e)	43,783
Adjustments to offset required GHG emissions reported in prior years	
Total offsets adjustment (tCO ₂ e)	-249
Grand total offsets for the 2025 reporting year	
Grand total offsets to be retired for the 2025 reporting year (tCO ₂ e)	43,534
Offset investment (\$)	\$1,088,350
Offset investment (\$) including GST	\$ 1,142,768

Retirement of offsets

In accordance with the requirements of the Climate Change Accountability Act and the Carbon Neutral Government Regulation, Fraser Health (the Organization) is responsible for arranging for the retirement of the offsets obligation reported on the left for the 2025 calendar year, together with any adjustments reported for past calendar years (if applicable). The Organization hereby agrees that, in exchange for the Ministry of Energy and Climate Solutions (the Ministry) ensuring that these offsets are retired on the Organization’s behalf, the Organization will pay within 30 days, the associated invoice to be issued by the Ministry in an amount equal to \$25 per tonne of offsets retired on its behalf plus GST.

- i BioCO₂ is included in total emissions but not total offsets. BioCO₂ (biological carbon dioxide) emissions are generated from organic, renewable sources such as biomass, waste, or fermentation, rather than fossil fuels.
- ii Emissions and offset investment amounts will be validated by the Climate Solutions Division prior to distributing invoices.
- iii “Grand total offsets to be retired” are rounded to a whole number before multiplying by \$25 per tCO₂e.

Navigation

[Table of contents](#)

[Executive message](#)

[Our story](#)

[Our progress: Targets and dashboards](#)

[Our leadership](#)

[Our partners](#)

[2025 GHG emissions and offsets summary table](#)

► [Site by site emissions](#)

[References](#)

Related resources

[Green+Leaders Annual Report](#)

[Methodology for Key Performance Indicators](#)

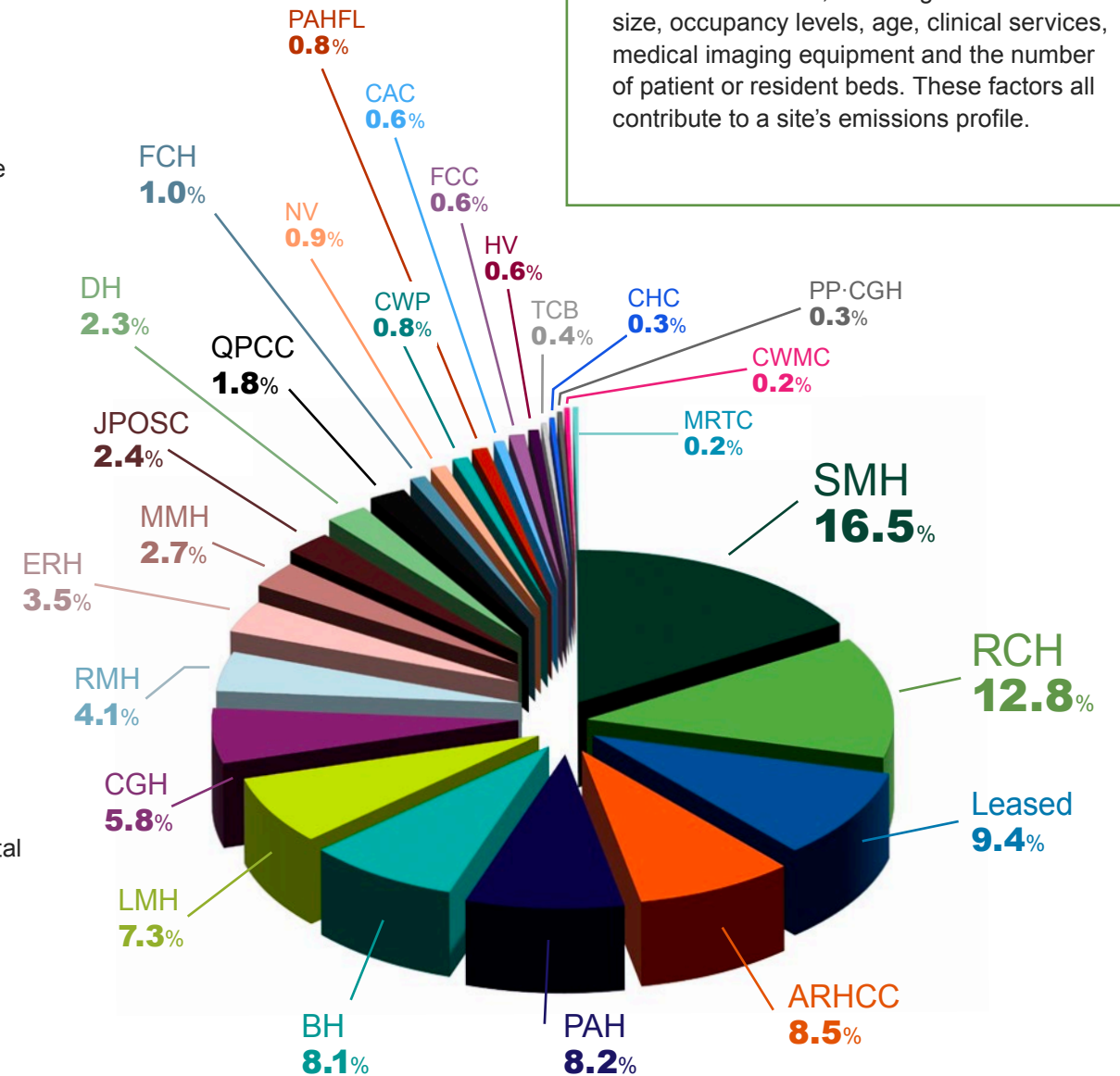
Site by site emissions

Site legend

- ▶ **ARHCC** Abbotsford Regional Hospital and Cancer Centre
- ▶ **BH** Burnaby Hospital
- ▶ **CAC** Czorny Alzheimer Centre
- ▶ **CGH** Chilliwack General Hospital
- ▶ **CHC** Chilliwack Health Centre
- ▶ **CWMC** Creekside Withdrawal Management Centre
- ▶ **CWP** Cottage and Worthington Pavilions
- ▶ **DH** Delta Hospital
- ▶ **ERH** Eagle Ridge Hospital
- ▶ **FCC** Fellburn Care Centre
- ▶ **FCH** Fraser Canyon Hospital
- ▶ **HV** Heritage Village
- ▶ **JPOSC** Jim Pattison Outpatient Care and Surgery Centre in Surrey
- ▶ **Leased** Leased sites
- ▶ **LMH** Langley Memorial Hospital
- ▶ **MMH** Mission Memorial Hospital
- ▶ **MRTC** Maple Ridge Treatment Centre
- ▶ **NV** New Vista
- ▶ **PAH** Peace Arch Hospital
- ▶ **PAHFL** PAH Foundation Lodge
- ▶ **PP·CGH** Parkholm Place, Chilliwack General Hospital
- ▶ **QPCC** Queen's Park Care Centre
- ▶ **RCH** Royal Columbian Hospital
- ▶ **RMH** Ridge Meadows Hospital
- ▶ **SMH** Surrey Memorial Hospital
- ▶ **TCB** Timber Creek Tertiary Care Facility

Understanding site emissions

Site-level emissions are presented to provide a more accurate and meaningful understanding of performance across our portfolio. Each facility operates under different conditions, including variation in size, occupancy levels, age, clinical services, medical imaging equipment and the number of patient or resident beds. These factors all contribute to a site's emissions profile.



Navigation

Table of contents

Executive message

Our story

**Our progress: Targets and
dashboards**

Our leadership

Our partners

**2025 GHG emissions and
offsets summary table**

Site by site emissions

► **References**

Related resources

[Green+Leaders Annual Report](#)

[Methodology for Key Performance
Indicators](#)

References

A World Health Organization: Measuring greenhouse gas emissions in health systems [cited 2026 May 6]. Available from: <https://www.who.int/publications/i/item/9789240118423>

B [Organizational Readiness Playbook - CASCADES Canada](#)

C Information source for LEED: [Canadian Green Building Council project database](#).

D In 2025, Fraser Health facilities included in energy metering were (* denotes a facility that is not owned but is monitored for energy usage):

- Abbotsford Regional Hospital and Cancer Centre
- Burnaby Hospital
- Chilliwack General Hospital
- Chilliwack Public Health Unit
- Cottage and Worthington Pavilions
- Creekside Withdrawal Management Centre*
- Czorny Alzheimer Centre*
- Delta Hospital
- Eagle Ridge Hospital
- Fellburn Care Centre
- Fraser Canyon Hospital
- Heritage Village
- Jim Pattison Outpatient Care and Surgery Centre in Surrey
- Langley Memorial Hospital
- Maple Ridge Treatment Centre

- Mission Memorial Hospital
- New Vista Society
- Parkholm Place
- Peace Arch Hospital
- Peace Arch Hospital Foundation Lodge*
- Queen's Park Care Centre
- Ridge Meadows Hospital
- Royal Columbian Hospital
- Surrey Memorial Hospital
- Timber Creek Tertiary Care Facility

E The GreenCare survey is an annual survey distributed to staff and medical staff within Fraser Health, Providence Health Care, Provincial Health Services Authority and Vancouver Coastal Health. The survey assesses perspectives, experiences and behaviours related to the environment. Results help the EES and Planetary Health teams to monitor progress and identify opportunities to build a sustainable, climate resilient health system.

F Fraser Health acute care sites included in waste related key performance indicators were (* denotes facilities still working to return to pre-2020 recycling service levels):

- Abbotsford Regional Hospital and Cancer Centre*
- Burnaby Hospital*
- Chilliwack General Hospital*
- Delta Hospital

- Eagle Ridge Hospital
- Jim Pattison Outpatient Care and Surgery Centre in Surrey
- Langley Memorial Hospital
- Mission Memorial Hospital*
- Peace Arch Hospital
- Ridge Meadows Hospital*
- Royal Columbian Hospital*
- Surrey Memorial Hospital*

G Fraser Health non-acute care sites included in waste related key performance indicators were:

- Cottage and Worthington Pavilions
- Creekside Withdrawal Management Centre
- Czorny Alzheimer Centre
- Fellburn Care Centre
- Heritage Village
- Queen's Park Care Centre
- Timber Creek Tertiary Care Facility

H In 2025, Fraser Health facilities included in water metering were (* denotes a facility that is not owned but is monitored for water usage):

- Abbotsford Regional Hospital and Cancer Centre
- Burnaby Hospital
- Chilliwack General Hospital
- Chilliwack Public Health Unit
- Cottage and Worthington Pavilions
- Creekside Withdrawal Management Centre*
- Czorny Alzheimer Centre*

2025 Fraser Health

Climate Change Accountability Report (CCAR)

Navigation

Table of contents

Executive message

Our story

Our progress: Targets and
dashboards

Our leadership

Our partners

2025 GHG emissions and
offsets summary table

Site by site emissions

► **References**

Related resources

[Green+Leaders Annual Report](#)

[Methodology for Key Performance
Indicators](#)

- Delta Hospital
 - Eagle Ridge Hospital
 - Fellburn Care Centre
 - Fraser Canyon Hospital
 - Heritage Village
 - Jim Pattison Outpatient Care and
Surgery Centre in Surrey
 - Langley Memorial Hospital
 - Maple Ridge Treatment Centre
 - Mission Memorial Hospital
 - Parkholm Place
 - Peace Arch Hospital
 - Peace Arch Hospital Foundation Lodge*
 - Queen's Park Care Centre
 - Ridge Meadows Hospital
 - Royal Columbian Hospital
 - Surrey Memorial Hospital
 - Timber Creek Tertiary Care Facility
- I Trucost. Environmental Performance from Sugar Sheet Paper. Social Print Paper, 2017. Available from: <https://www.kpu.ca/sites/default/files/SocialPrintPaper-Trucost-SugarSheet-2017.pdf>.



Carbon Neutral