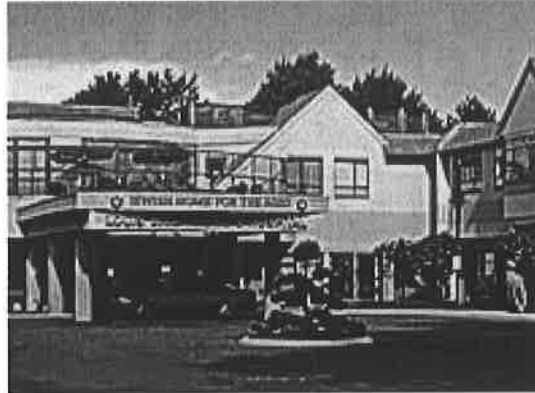


Louis Brier Home and Hospital - 2011 Carbon Neutral Action Report

Executive Summary



The Louis Brier Home and Hospital is a 218 Intermediate and Extended Care facility located at 41st and Oak street in Vancouver. The 9,676 square meter (104,152 square feet) was constructed in 1963 with an addition added in 1977 and the addition of a second level in 1991. It is the only Jewish long-term care facility west of Winnipeg. Special holiday observances and other special programs and services provide the kind of Home our residents and their families could never find anywhere else in British Columbia.

Our vision is to be leaders in the provision of seniors care to the Jewish elderly of the 21st century through developing and achieving standards of excellence in service, clinical practice, education, research, and community outreach.

We are committed to develop the best possible practices and policies for the health and safety of our residents, our staff, their communities and our environmental health and to implement recycling, reduce waste and pollution, implement energy efficiency measures other sustainable building initiatives and practices and develop collaborative partnerships with external agencies and service providers to reduce our Greenhouse Gas (GHG) emissions and our Carbon Footprint.

2011 Greenhouse Gas Emissions

Quarter:	Q1	Q2	Q3	Q4
Dates	January to March	April to June	July to September	October to December
Estimated /Actual Emissions (tCO ₂ e)	236.50	112.20	178.69	254.84

Total emissions = 782 tonnes

2011 Offsets

Total emission offsets (782 tonnes) have been applied to become carbon neutral for 2011

Actions Taken to Reduce Greenhouse Gas Emissions in 2011

We continue to enhance the initiatives that we have been developing over the past few years such as:

- Improve the efficiency of building operations by participating in BC Hydro's Continuous Optimization Program . The program is to identify deficiencies and improvements in the operation of a facility's mechanical equipment, lighting, and related controls, and determine opportunities for corrective action that reduce energy consumption and preserve the indoor environmental quality.
- Energy Management Plan through partnership with a contracted service provider for real time on-line monitoring of our Heating, Ventilation and Air Conditioning (HVAC)energy utilities consumptions and adjustment through an energy server. Monthly energy consumption reports are provided, showing monthly savings on costs, GHG emissions and energy use.
- Waste management practices including.
 1. recycling programme for paper, plastics, glass, metal and cardboard
 2. monitoring and minimizing wastage
 3. encouraging reuse of materials
 4. selling or donating obsolete or surplus items
- Safe disposal of hazardous materials and waste.
- Regular inspection and maintenance of the HVAC system and computer controlled boilers to promote maximum efficiency and control emissions.
- Dishwashing and laundry washing machines are regularly serviced and checked for their consumption of cleaning agents, water, and electricity.
- Laundry uses phosphate- free chemicals & products that use less water.
- Dual pane windows are inspected regularly for leaks.
- Water pipes and bathroom plumbing are inspected regularly for leaks
- New medication dispensing system paper and plastic waste.

Plans to Continue Reducing Greenhouse Gas Emissions 2012-2014

We are committed, within our available funding and resources, to:

- Implement measures identified in BC Hydro's Continuous Optimization Program including exploring the use of ozone and oxygen system for industrial washing machines , revising monthly demand set points for Hybrid Heating and implementing a software schedule which would disable kitchen exhaust fans during the night
- Continue and enhance waste management and reduction practices
- Continue to promote and implement sustainability initiatives
- Continue to seek ways and opportunities to implement energy conservation measures
- Continue to Investigate and introduce other actions that will contribute to our goal of reducing GHG and reduce our Carbon Footprint.



Peter Kafka
CEO

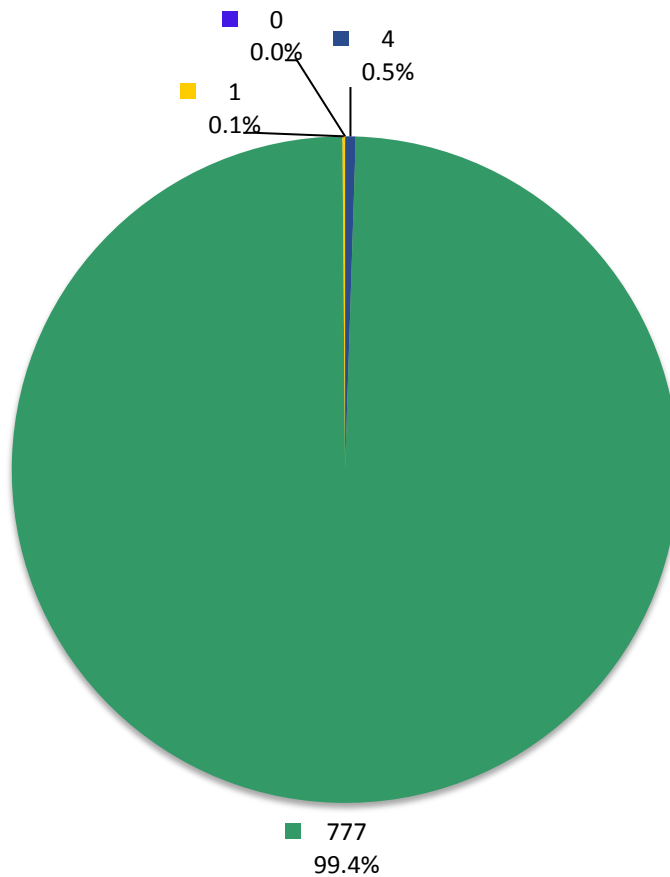
Louis Brier Home Hospital - 2011 Carbon Neutral Action Report

Actions Towards Carbon Neutrality

The actions listed below contribute to a reduction in greenhouse gas emissions from sources for which public sector organizations are responsible under the carbon neutral government regulation of the *Greenhouse Gas Reduction Targets Act*.

Action	Status (as of 12/31/11)	Performance to Date (as of 12/31/11)	Steps Taken in 2011	Steps Planned for 2012 -2014	Start Year	End Year
Mobile Fuel Combustion (Fleet and other mobile equipment)						
Vehicle fuel efficiency						
Perform regular fleet maintenance specifically to improve fuel-efficiency	Ongoing/In Progress	100 % of vehicles are subject to regular maintenance for fuel efficiency				
Stationary Fuel Combustion, Electricity and Fugitive Emissions (Buildings)						
This section is either not applicable, not yet evaluated, or was completed before 2011						
Supplies (Paper)						
Electronic media in place of paper						
Switch to an electronic payroll notification system in place of paper pay stubs	In Development			consult with Payroll system provider	2012	2014

**Louis Brier Home & Hospital
Greenhouse Gas Emissions by Source
for the 2011 Calendar Year (tCO₂e*)**



Total Emissions: 781

- Mobile Fuel Combustion (Fleet and other mobile equipment)
- Stationary Fuel Combustion (Building Heating and Generators) and Electricity
- Supplies (Paper)
- Fugitive

Offsets Applied to Become Carbon Neutral in 2011 (Generated May 18, 2012 10:53 AM)

Total offsets required: **781**. Total offset investment: **\$19,525**. Emissions which do not require offsets: **0** **

*Tonnes of carbon dioxide equivalent (tCO₂e) is a standard unit of measure in which all types of greenhouse gases are expressed based on their global warming potential relative to carbon dioxide.

** Under the *Carbon Neutral Government Regulation of the Greenhouse Gas Reduction Targets Act*, all emissions from the sources listed above must be reported. As outlined in the regulation, some emissions do not require offsets.