

Kootenay Region (Region 4) Periods of Least Risk for Instream Works by Fish Species																
	April		May		June		July		August		September		October		November	
	1-15	16-30	1-15	16-31	1-15	16-30	1-15	16-31	1-15	16-31	1-15	16-30	1-15	16-31	1-15	16-30
Bull Trout/ Dolly Varden																
Rainbow Trout																
Rainbow Trout *										20th						
Cutthroat Trout																
Cutthroat Trout *										20th						
Kokanee																
Kokanee West Arm **																
Mountain Whitefish																
Burbot																
Brook Trout																

The shaded area on this table represents the general time period or ‘window’ in which changes in and about a stream would cause the least risk of impact to specific fish species in the Kootenay Region. All terms and conditions related to the protection of fish and fish habitat must be employed even when works are conducted within the appropriate instream work window. Knowledge of fish behaviour in specific streams, unusual weather, natural phenomena, specific events, unusual circumstances or activities that do not create disturbance below the high water mark in fish bearing streams could allow for work outside these windows. If works in fish bearing streams that involve activities that create disturbance below the high water mark must be conducted outside of these windows, the services of a Qualified Professional will be required (refer to “Terms and Conditions for Changes In and About a Stream Specified by Ministry of Environment (MoE) Habitat Officers, Kootenay Region (Region 4)” dated June 2009). In the Kootenay Region, the “delayed instream work window zone” is designated as those streams or portions thereof that are within the light shaded areas in the attached “Figure 1. Kootenay Region Rainbow/Cutthroat Trout Instream Work Window Zones” (dated January 2, 2004) and are generally greater than 1100 metres above sea level, with the exception of streams north of the “Pingston/Donald Boundary” which are all within the delayed instream work window zone regardless of elevation (refer to attached Figure 1 for detail).

* Applicable instream work window where these species occur within the “Delayed Instream Work Window Zone” as shown in the attached Figure 1.

** The “West Arm” is inclusive of the “Upper West Arm” and the “Lower West Arm” of Kootenay Lake as defined in the “Freshwater Fishing Regulations Synopsis” (<http://www.env.gov.bc.ca/fw/fish/regulations/>).

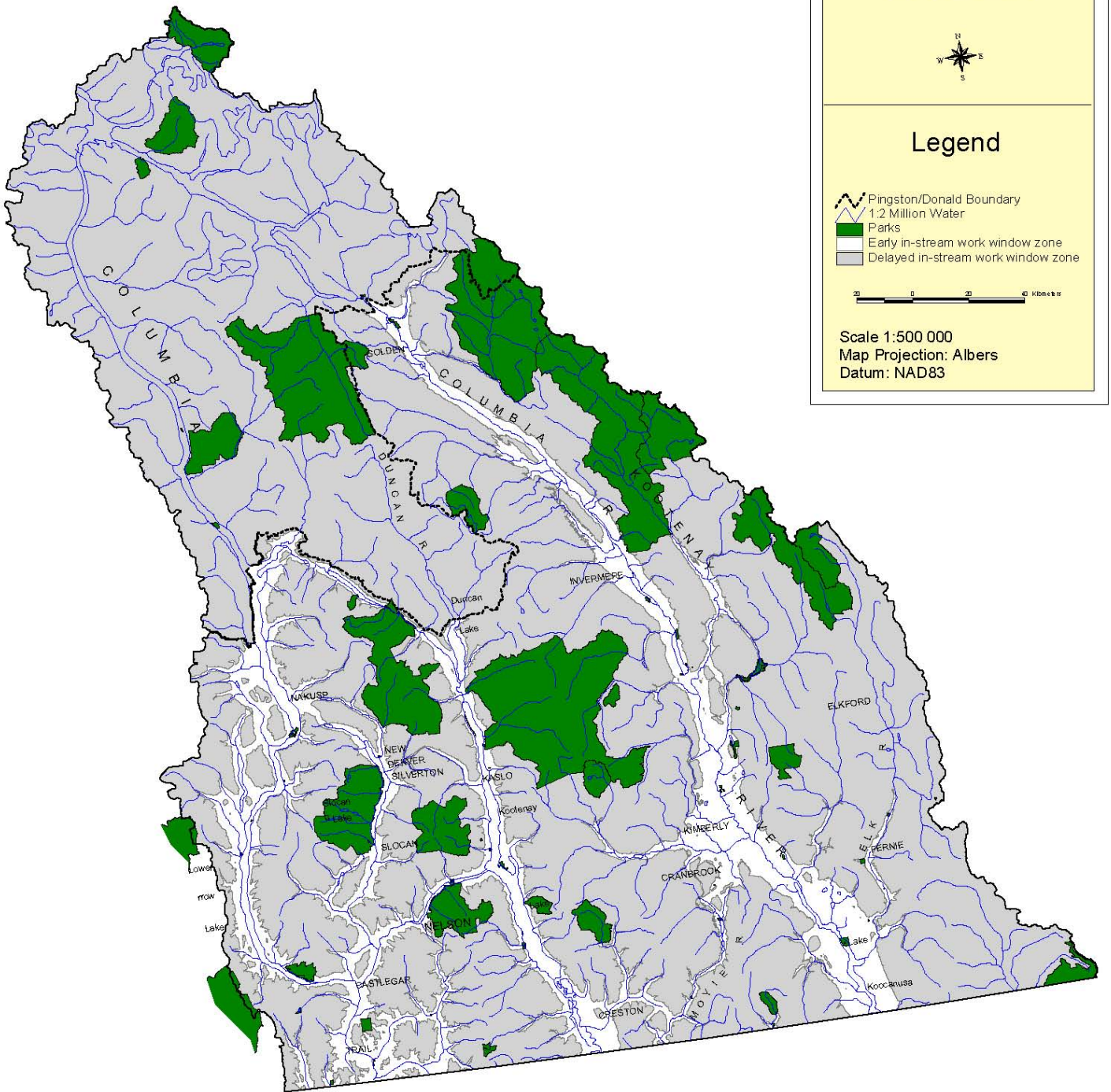


Legend

- Pingston/Donald Boundary
- 1:2 Million Water
- Parks
- Early in-stream work window zone
- Delayed in-stream work window zone

0 20 40 Kilometers

Scale 1:500 000
Map Projection: Albers
Datum: NAD83



January 2, 2004

Figure 1. Kootenay Region Rainbow/Cutthroat Trout In-Stream Work Window Zones