

Water Application Drawing Standards

(Contents: February 2016, hyperlinks revised October 2023)

Applicants are required to meet the following Drawing Standards. If the drawing does not meet these standards, the application will be returned.

DRAWING OPTIONS

Digital Submissions:

- Google Earth, along with the FrontCounter BC Discovery Tool ([/https://portal.nrs.gov.bc.ca/web/client/-/frontcounter-bc-discovery-tool](https://portal.nrs.gov.bc.ca/web/client/-/frontcounter-bc-discovery-tool)), can be used for creating the files for digital submissions. Submit the KML or KMZ file with your application.
Examples shown on Figures 1-4.
- Other readily available digital formats are also acceptable (e.g. Arc GIS shapefile, GeoJSON, etc.).

Sketches:

- A Regional District Composite Map, Surveyor's Certificate or Legal Survey Plan may serve as the base map for your drawing.
Example shown on Figure 5.
- You may create a PDF of your drawing using an online mapping program such as iMapBC (<https://www2.gov.bc.ca/gov/content/data/geographic-data-services/web-based-mapping/imapbc>).
- Examples shown on Figures 6-7.
- Show the scale of the drawing (e.g. 1:5000, 1 cm = 50m), a North arrow and the coordinates for the center of the drawing (e.g. Latitude and Longitude or UTM).

DRAWING REQUIREMENTS

The items listed below are cross-referenced on the sample drawings with their corresponding numbers. The numbers do not need to be included on your final map.

1. Show the location of the source relative to your property boundaries and the boundaries of other landowners. Examples shown on Figures 1-7.
2. Label the source (e.g. stream, well, etc.) and indicate the direction of flow. Examples shown on Figures 1-7.
3. If storage is needed, show the location of the reservoir and indicate whether it will be manmade or on a natural pond or lake. Example shown on Figure 3.

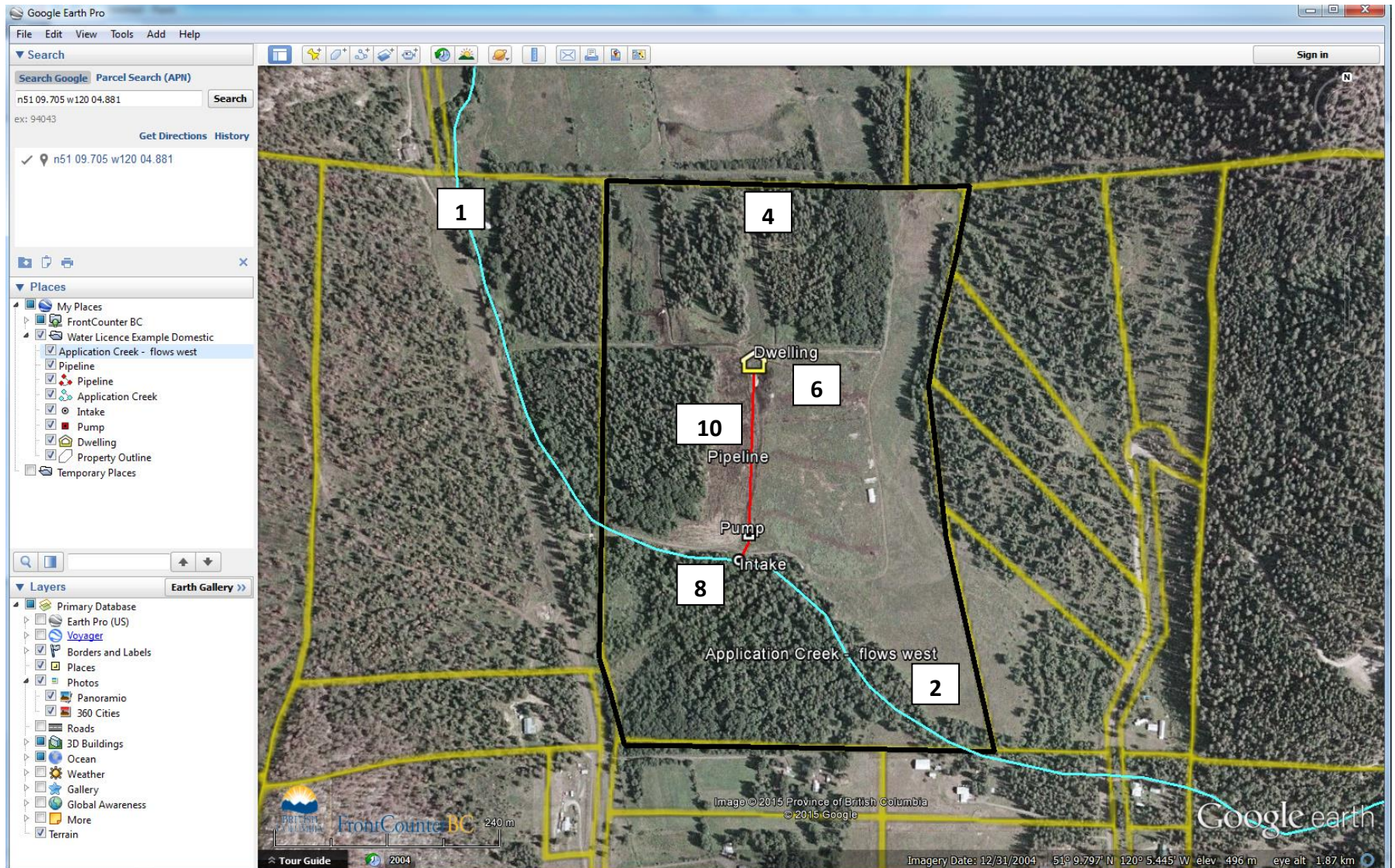
.../2

DRAWING REQUIREMENTS CONT'D

4. Show the legal property boundaries of the land where the water will be used are shown. Examples shown on Figures 1-7.
5. Show all parcels of land, both private and Crown, which will be physically affected by the proposed works (e.g. crossed, flooded or used as access). Examples shown on Figures 2 and 5.
6. Identify the actual place of use (e.g. dwellings, barns, pastures, etc.). Examples shown on Figures 1-7.
7. If any land is to be flooded, identify the area that will be underwater in relation to the property boundaries. Example shown on Figure 3.
8. Identify the location of the proposed water intake, diversion structure or well. Examples shown on Figures 1-7.
9. Identify the area(s) to be irrigated, if applicable. Examples shown on Figures 3-7.
10. Indicate and label all works, existing or proposed (e.g. intake/well, pipeline, pump, dugouts, ponds, reservoirs, irrigation systems, etc.). Examples shown on Figures 1-7

Figure 1

Sample Digital Submission (screen capture of a Google Earth KML or KMZ file) for:
Domestic, from a **stream** located on applicant's land.

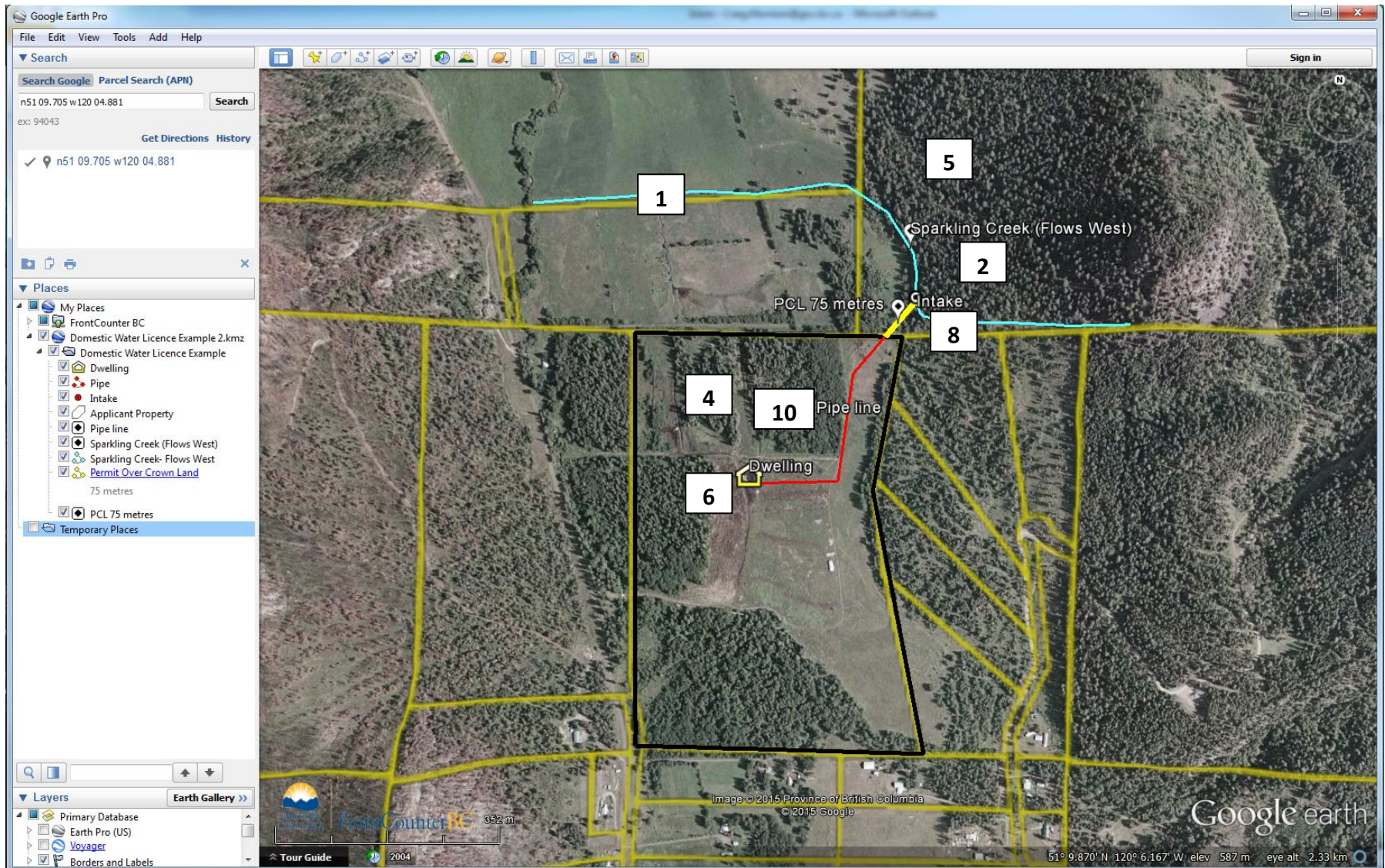


NOTE: Numbers are cross-referenced from the written drawing requirements. These numbers are informational only and are not required on the drawing.

Figure 2

Sample Digital Submission (screen capture of a Google Earth KML or KMZ file) for:

Domestic, from a stream across Crown land.

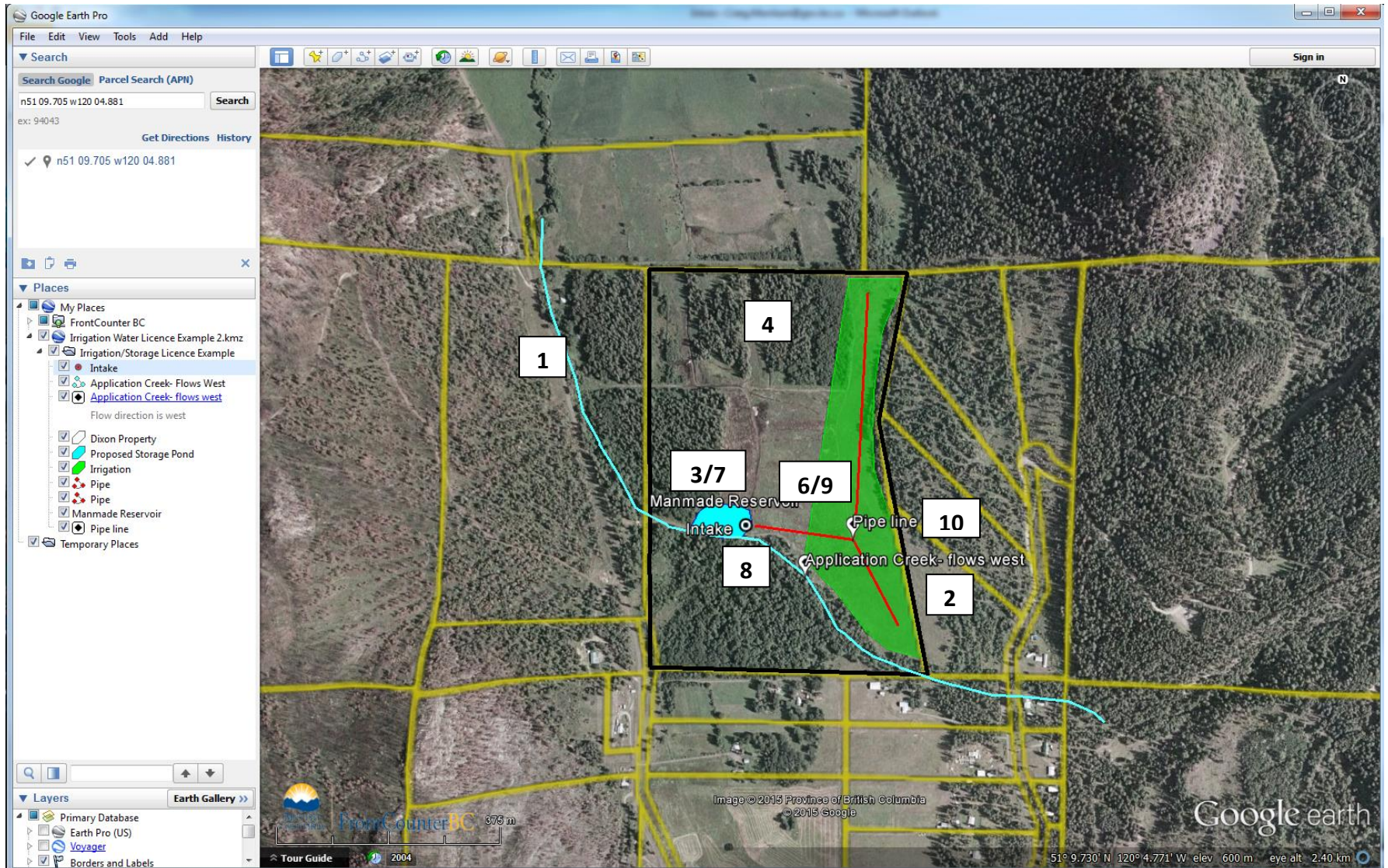


NOTE: Numbers are cross-referenced from the written drawing requirements. These numbers are informational only and are not required on the drawing.

Figure 3

Sample Digital Submission (screen capture of a Google Earth KML or KMZ file) for:

Irrigation, from a **stream** with on-stream storage within applicant's land.

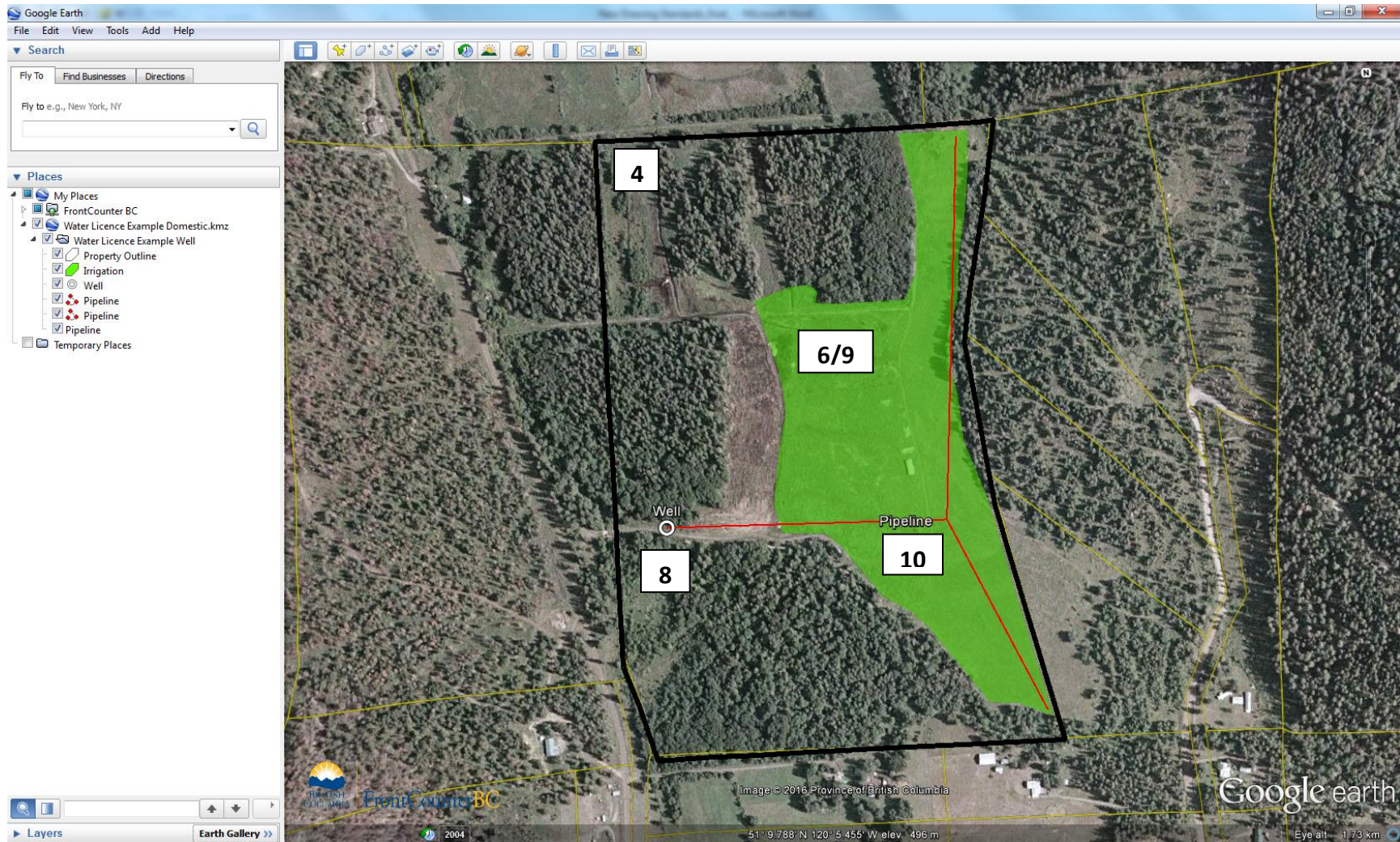


NOTE: Numbers are cross-referenced from the written drawing requirements. These numbers are informational only and are not required on the drawing.

Figure 4

Sample Digital Submission (screen capture of a Google Earth KML or KMZ file) for:

Irrigation, from a well.

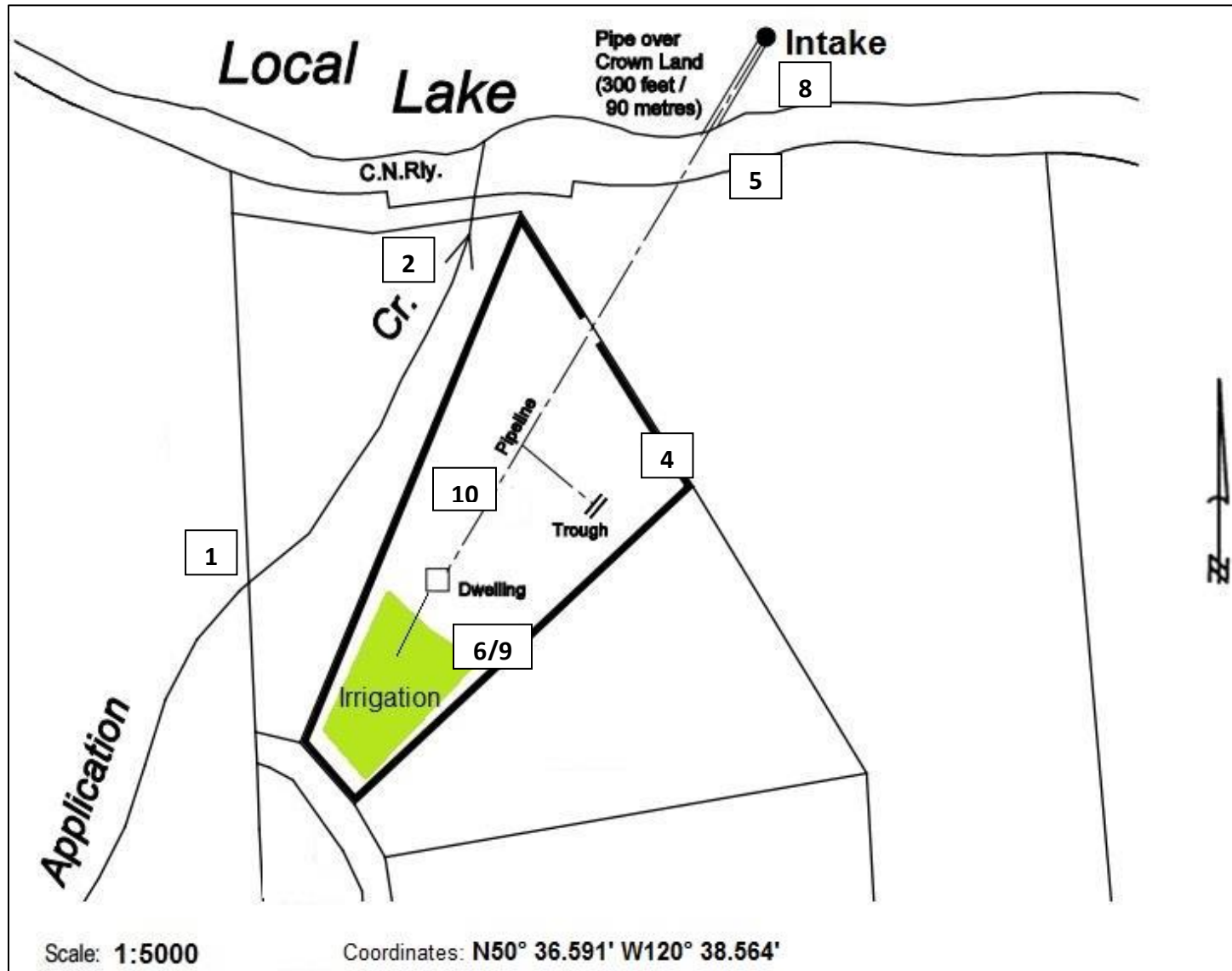


NOTE: Numbers are cross-referenced from the written drawing requirements. These numbers are informational only and are not required on the drawing.

Figure 5

Sample of drawing created using survey plan as the base map for:

Domestic, Irrigation & Stockwatering, from a lake across private and Crown land.

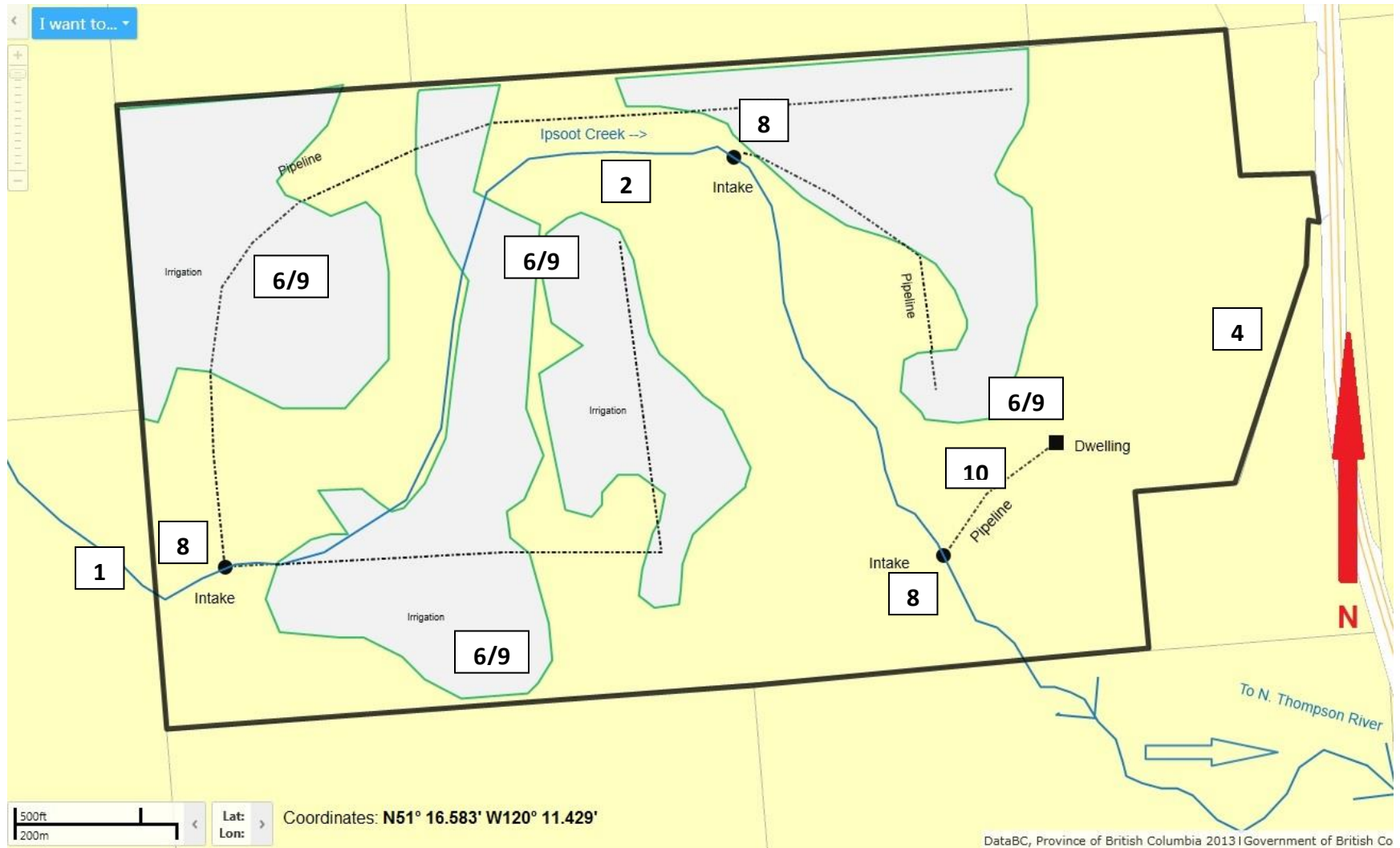


NOTE: Numbers are cross-referenced from the written drawing requirements. These numbers are informational only and are not required on the drawing.

Figure 6

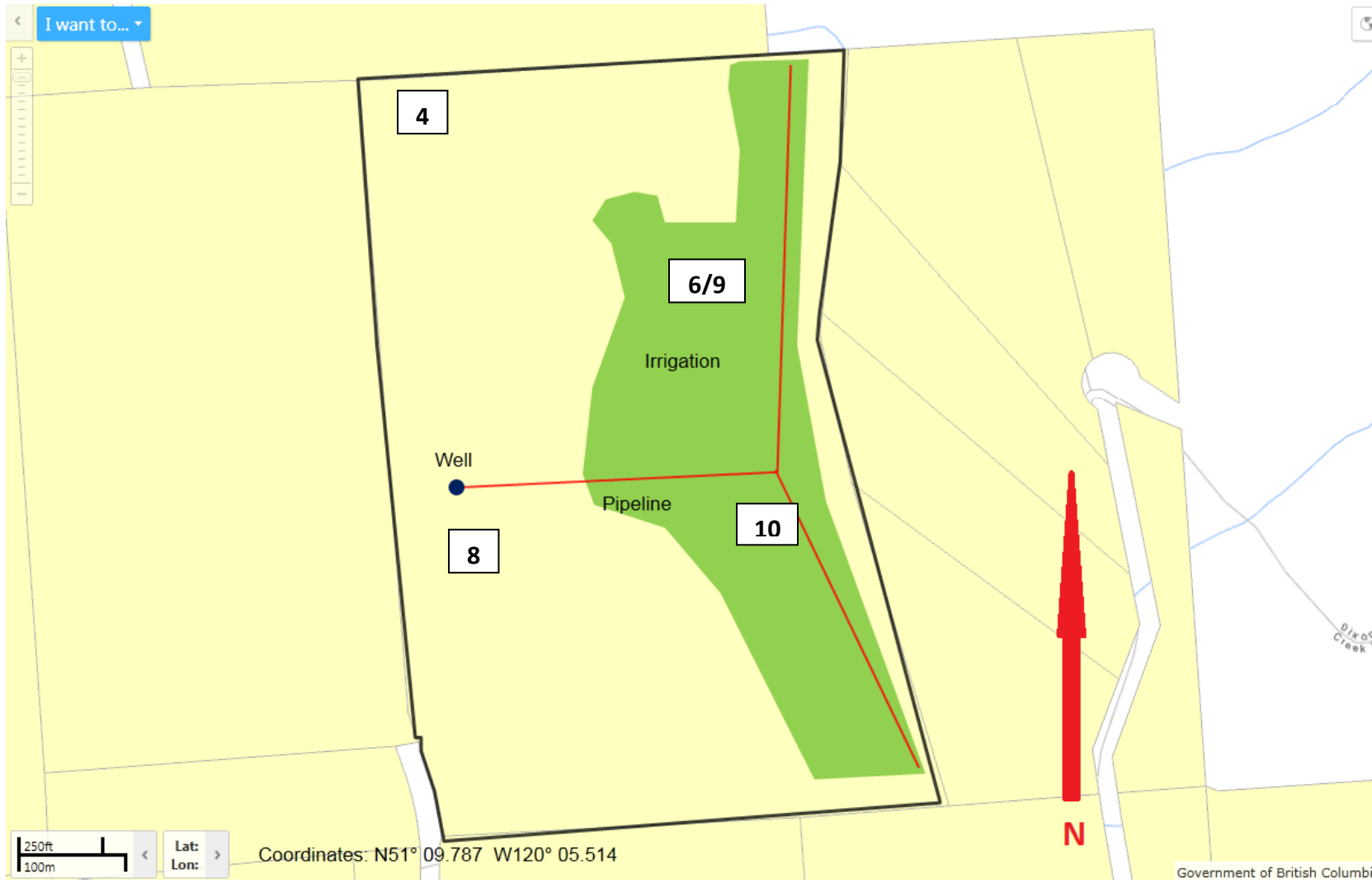
Sample of drawing created using online mapping program for:

Irrigation, from a **stream** located on applicant's land.



NOTE: Numbers are cross-referenced from the written drawing requirements. These numbers are informational only and are not required on the drawing.

Figure 7 Sample Digital Submission (screen capture of a Google Earth KML file) for:
Irrigation, from a well.



NOTE: Numbers are cross-referenced from the written drawing requirements. These numbers are informational only and are not required on the drawing.