

## Changes in and About a Stream Application Drawing Standards

Changes in and About a Stream applications include Change Approval and Notification of Authorized Changes. Applicants are required to meet the following Drawing Standards. If the submitted drawing does not meet these standards, the application may be returned.

---

### Drawing Requirements

1. Show the location of the proposed works in relation to the property boundaries.
  2. Show all parcels of land, both private and Crown, which will be physically affected by the proposed works (e.g. dock location, culvert placement, bank erosion, etc.).
  3. Label the water source and if applicable, indicate the direction of flow for streams.
  4. Technical or Engineered drawings may be requested for more complex proposed instream works. These drawings should be submitted with the application if available.
- 

### Drawing Options

#### Sketches:

- Show the scale of the drawing (e.g. 1:5000, 1 cm = 50m) and a North arrow
- A Regional District Composite Map, Surveyor's Certificate or Legal Survey Plan may serve as the base map for the drawing
- A hand drawn map may be acceptable if legible and all requirements are met
- You may create a digital drawing using an online mapping program such as:
  - Integrated Land and Resource Registry (ILRR)  
<https://www2.gov.bc.ca/gov/content/data/geographic-data-services/land-use/integrated-land-resource-registry>
  - iMapBC (<https://maps.gov.bc.ca/ess/hm/imap4m/>)
  - Google Earth (<https://portalext.nrs.gov.bc.ca/web/client/-/frontcounter-bc-discovery-tool.html>)
  - BC Agriculture Water Calculator  
<https://bcwatercalculator.ca/agriculture/welcome>

**Photographs:**

- Although not mandatory, labeled photographs are a helpful visual addition to the application

**Digital Spatial Files:**

It is strongly recommended that you submit a digital spatial file along with the sketch. Digital mapping tools <https://portal.nrs.gov.bc.ca/web/client/-/mapping-tools>

Examples of acceptable digital spatial files are:

- KML or KMZ
- Shapefile – must include supporting files (.shp, .shx, .dbf and .prj)
- Geomark: <https://www2.gov.bc.ca/gov/content/data/geographic-data-services/location-services/geomark-webservice>

**Other Relevant or Supporting Information, if applicable:**

- Additional/supporting work associated with the project (e.g. access roads, work areas, etc.)
- Bank Slope
- High Water Mark of surface water feature (e.g. stream, wetland, pond, lake, etc.)
- Beaver pond extent and wetland communities
- Water level during proposed work window

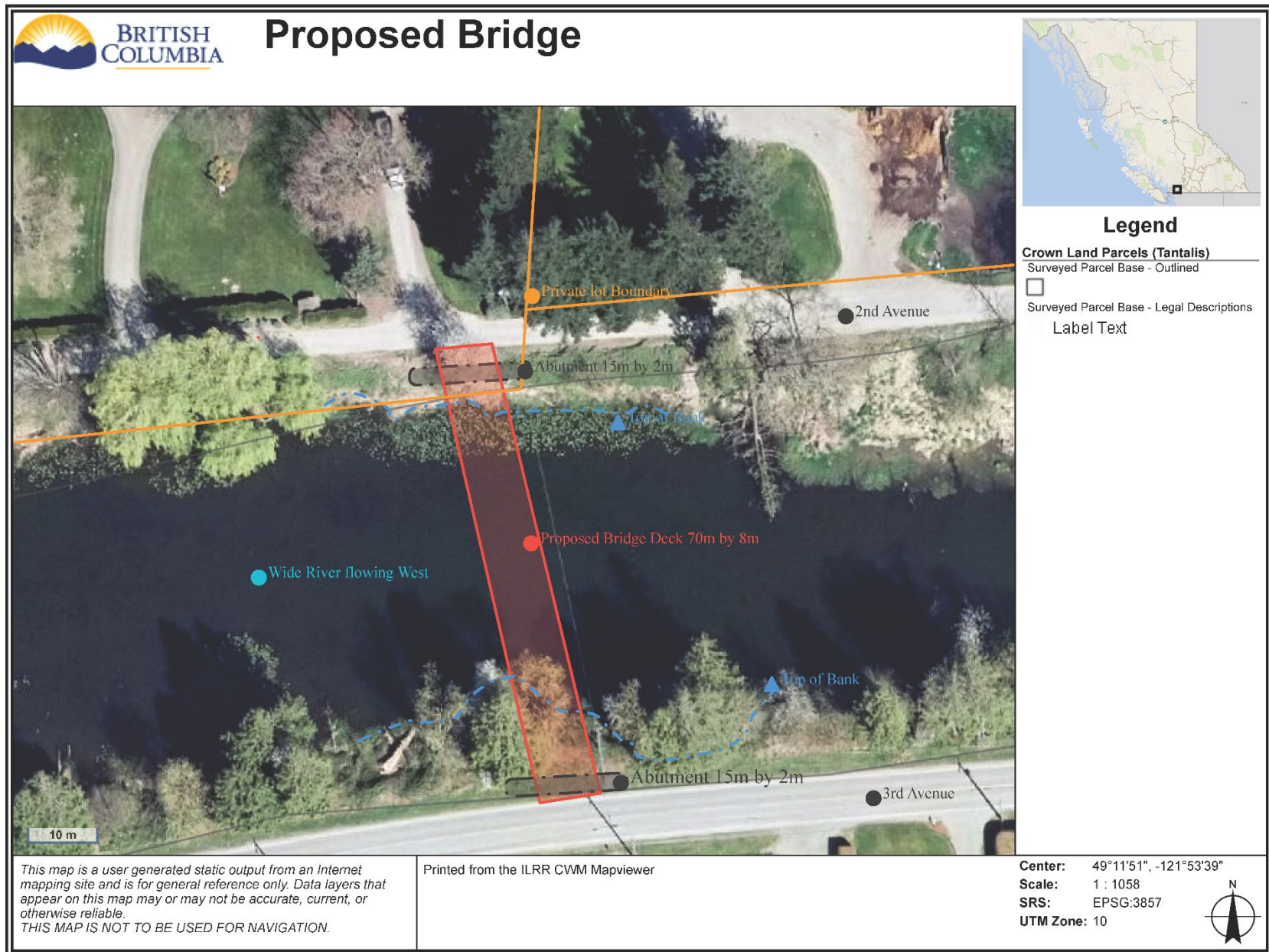
**Additional Resources:**

[A Users' Guide for Changes In and About a Stream in B.C.](#)

[Water Sustainability Act](#)

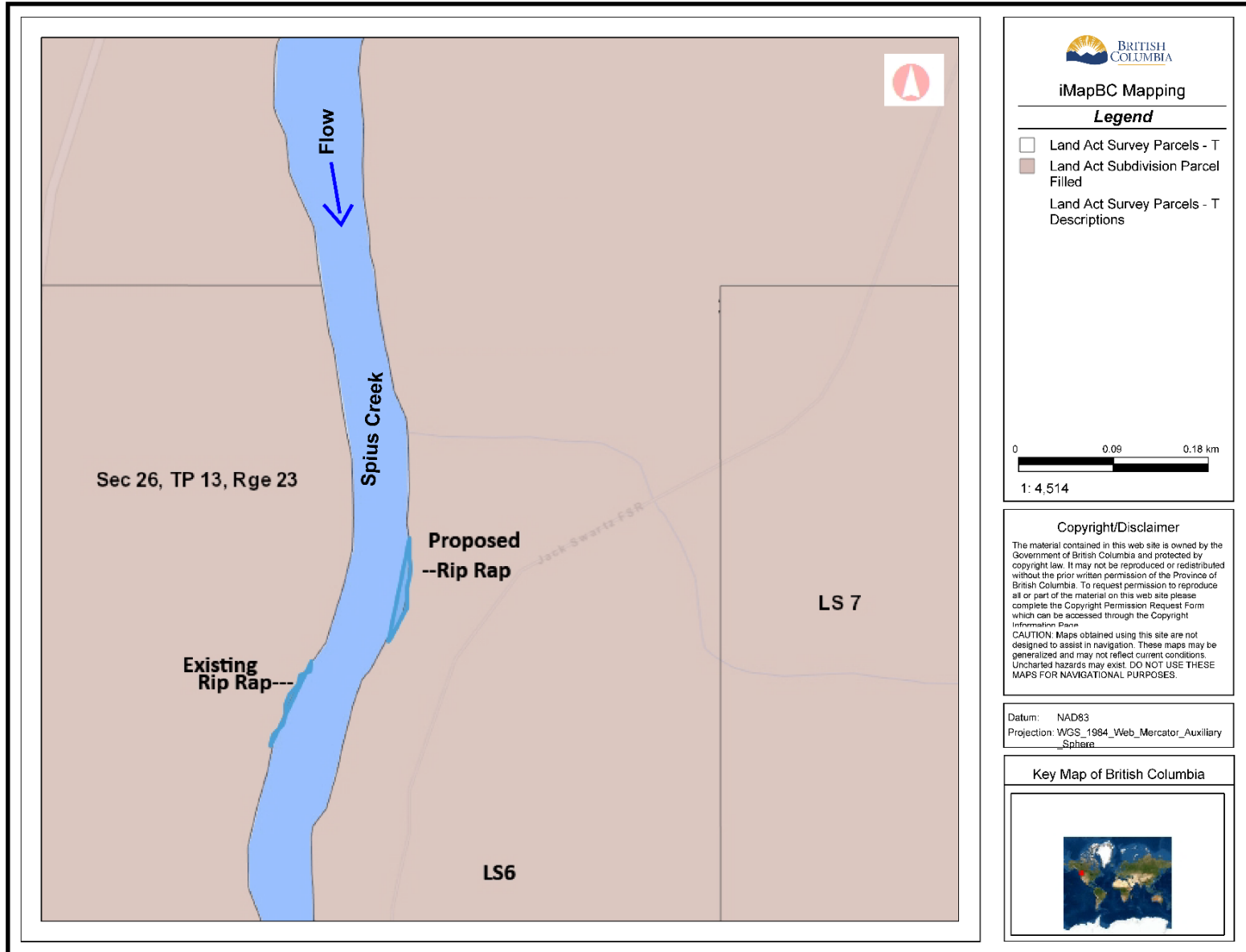
[Water Sustainability Regulation](#)

# Example 1: Integrated Land and Resource Registry (ILRR)





## Example 2: iMapBC

### Site Plan



iMapBC Mapping

#### Legend

-  Land Act Survey Parcels - T
-  Land Act Subdivision Parcel Filled
- Land Act Survey Parcels - T Descriptions

0 0.09 0.18 km

1: 4,514

#### Copyright/Disclaimer

The material contained in this web site is owned by the Government of British Columbia and protected by copyright law. It may not be reproduced or redistributed without the prior written permission of the Province of British Columbia. To request permission to reproduce all or part of the material on this web site please complete the Copyright Permission Request Form which can be accessed through the Copyright Information Page.

CAUTION: Maps obtained using this site are not designed to assist in navigation. These maps may be generalized and may not reflect current conditions. Uncharted hazards may exist. DO NOT USE THESE MAPS FOR NAVIGATIONAL PURPOSES.

Datum: NAD83

Projection: WGS\_1984\_Web\_Mercator\_Auxiliary\_Sphere

#### Key Map of British Columbia

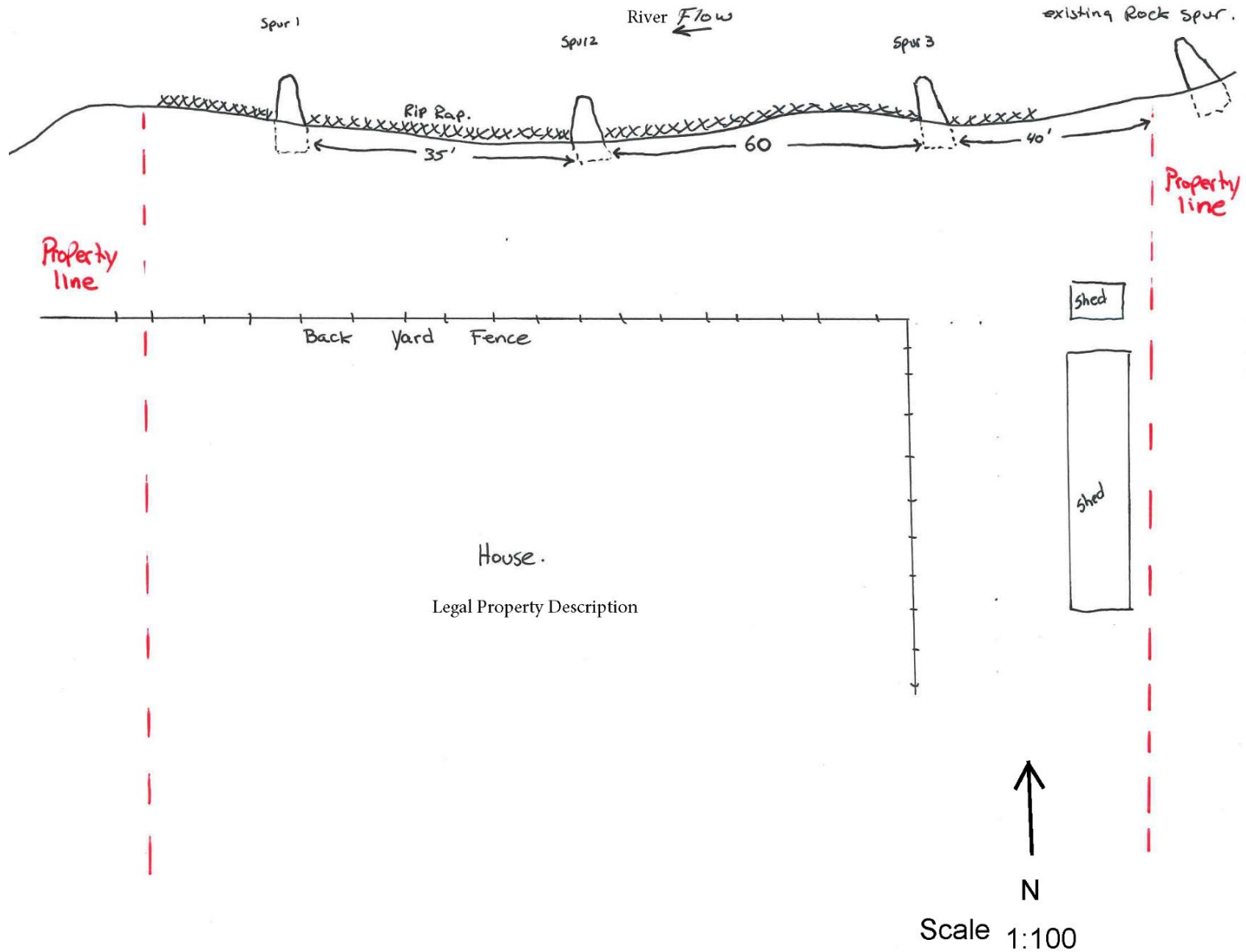




### Example 3: Google Earth



# Example 4: Hand Drawn Sketch





### Example 5: Labeled Photographs

