

The Government of the Province of British Columbia  
Ministry of Environment  
Water Management Branch

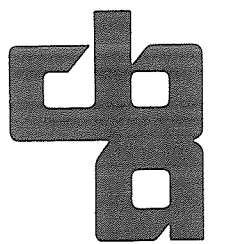
Canada – British Columbia  
Fraser River Flood Control 1968 Agreement  
Project No. 7 District of Mission

**DRAWING LIST**

**CONTRACT DRAWINGS**

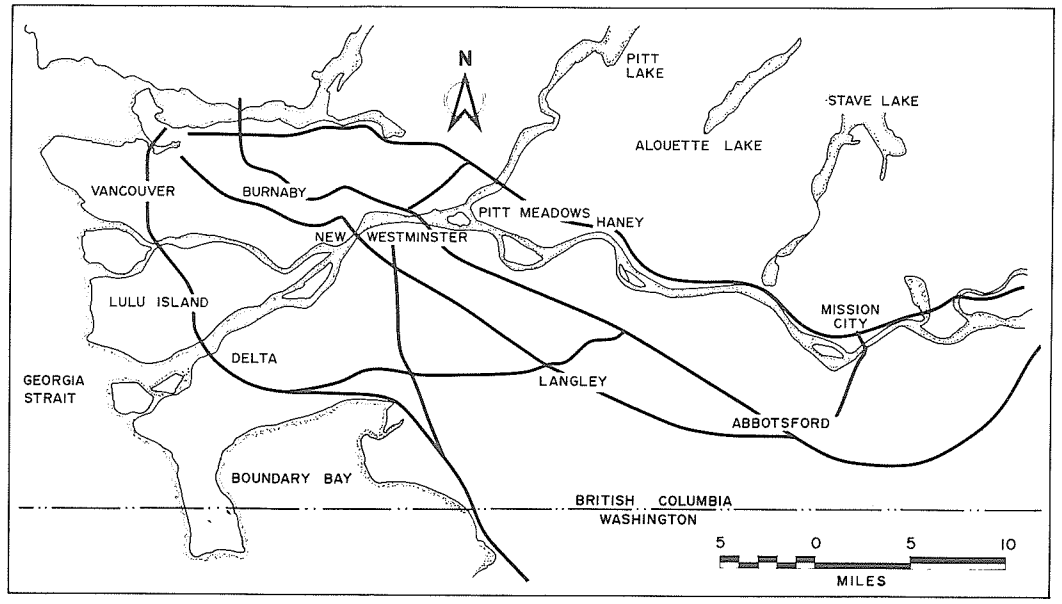
4843-1-1 A KEY PLAN AND SITE PLAN  
4843-1-2 A ALIGNMENT PLAN, SHEET 1 OF 4  
4843-1-3 A ALIGNMENT PLAN, SHEET 2 OF 4  
4843-1-4 A ALIGNMENT PLAN, SHEET 3 OF 4  
4843-1-5 A ALIGNMENT PLAN, SHEET 4 OF 4  
4843-1-6 A DYKE PROFILE

**Contract No. 1  
Mission Dykes**

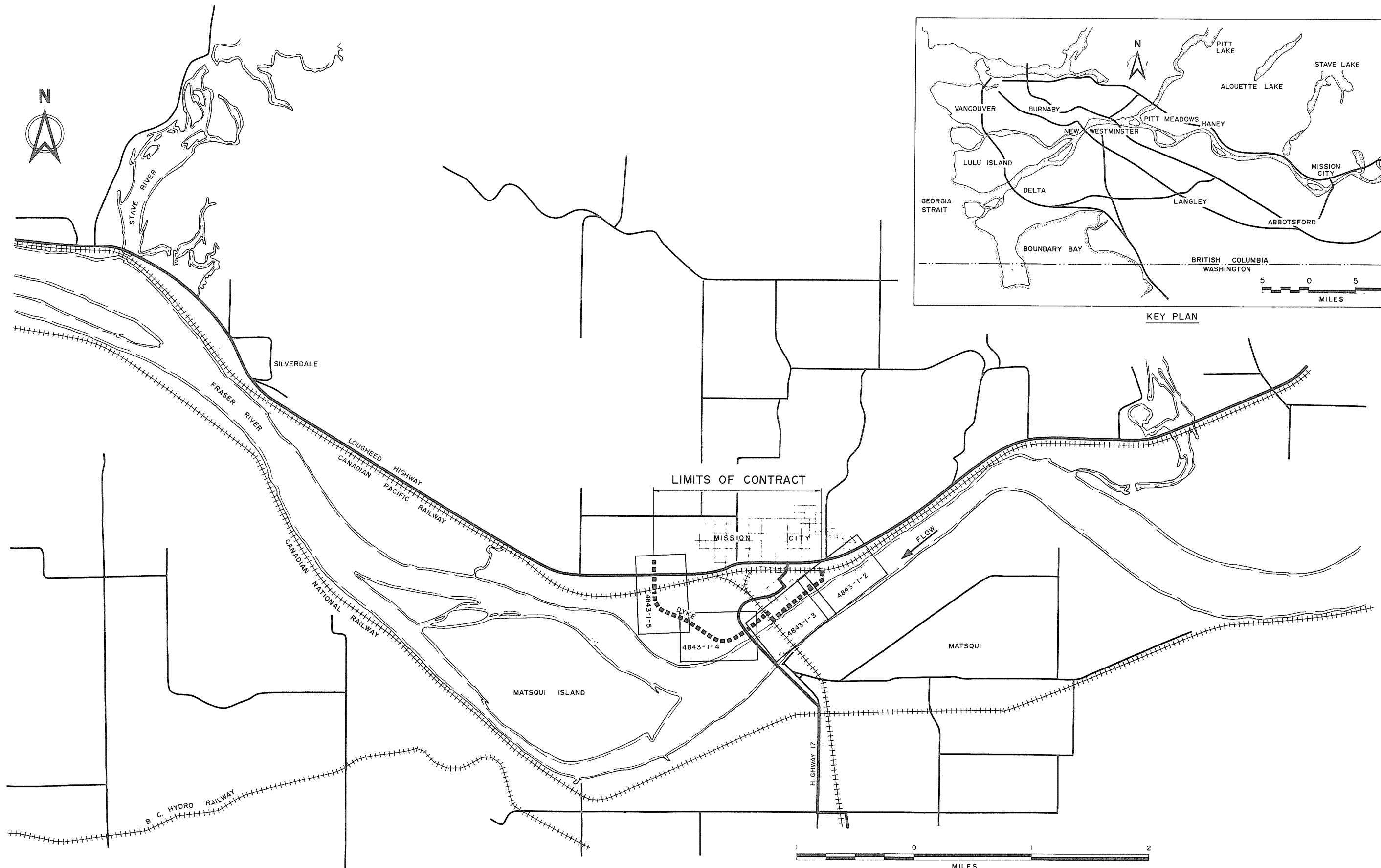


**CBA ENGINEERING LTD**

Consulting Engineers  
Vancouver, Canada



KEY PLAN



SITE PLAN



**CBA ENGINEERING LTD.**  
CONSULTING ENGINEERS - VANCOUVER - CANADA

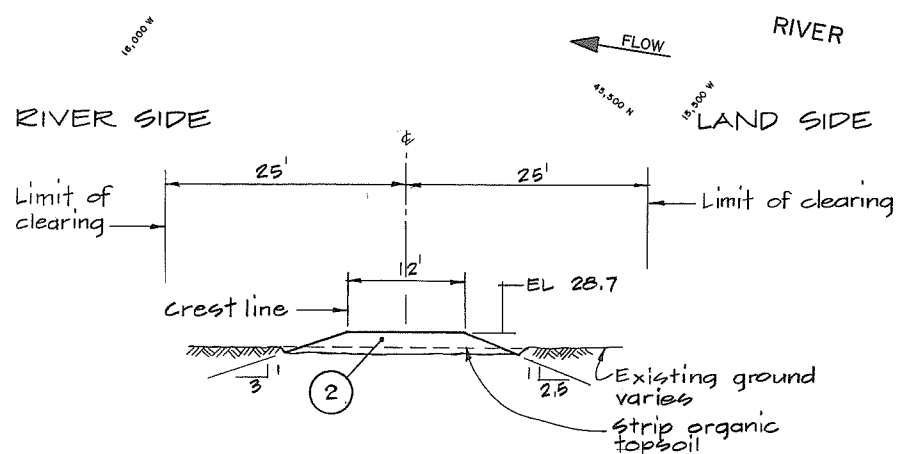
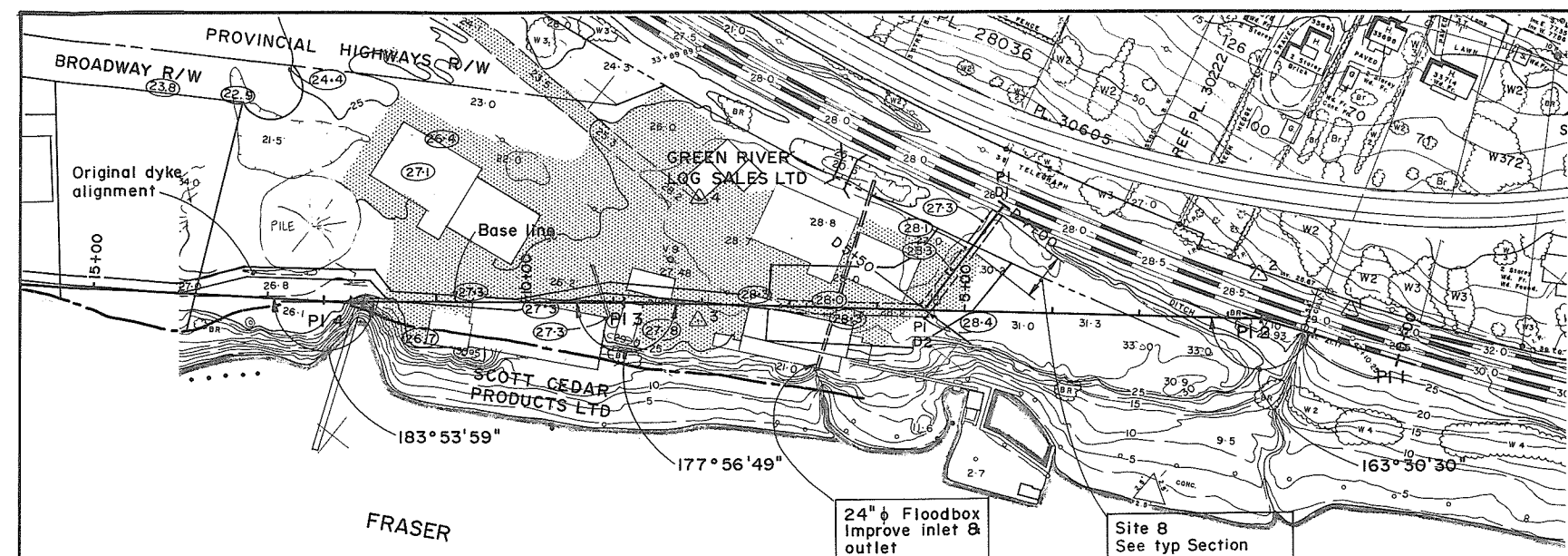
NO. BY REVISIONS DATE  
A PLC As constructed March 1990

RECOMMENDED CHIEF, PROJECTS DIV  
DATE  
APPROVED DIRECTOR  
DATE

Province of British Columbia  
Ministry of Environment  
WATER MANAGEMENT BRANCH  
CANADA - BRITISH COLUMBIA  
FRASER RIVER FLOOD CONTROL 1968 AGREEMENT  
PROJECT NO. 7 - DISTRICT OF MISSION  
CONTRACT NO. 1 - MISSION DYKES  
KEY PLAN AND SITE PLAN

DESIGNED SURVEYED  
DRAWN yeo/13 DATE  
CHECKED FILE NO. 0281550-C25-1  
SCALE AS SHOWN DATE MARCH 1990  
DWG. NO. 4843-1-1A SHEET OF SHEETS

Neg No 342039



TYP SECTION  
SITE 8 CH D4+10 to CH D4+65

THEORETICAL DYKE PROFILE		
CHAINAGE	DESIGN FLOOD ELEVATION	DESIGN CREST ELEVATION
4+00	26.7	28.7
10+00	26.6	28.6
20+00	26.4	28.4
30+00	26.2	28.2
40+00	26.0	28.0
50+00	25.9	27.9
60+00	25.8	27.8
70+00	25.7	27.7
80+00	25.6	27.6
90+00	25.5	27.5
100+00	25.4	27.4
110+00	25.3	27.3
114+00	25.3	27.3
115+00	29.0	31.0
118+00	29.0	31.0

BASE LINE DATA					
PI	Bearing	Chainage	Interval	Co-Ordinates	
				North	East
1	S 70°21'45" W	0+00.01	162.20	46,312.97	15,091.79
2	S 53°52'15" W	1+12.20	729.46	46,258.46	15,244.56
3	S 51°49'04" W	8+91.66	343.36	45,878.36	15,833.73
4	S 55°43'03" W	12+35.02	355.60	45,616.11	16,103.63
5		15+90.00		45,415.81	16,397.45
D1	N 00°00'00" E	D4+00	150.00	46,179.81	15,557.78
D2		D5+50		46,029.81	15,557.78

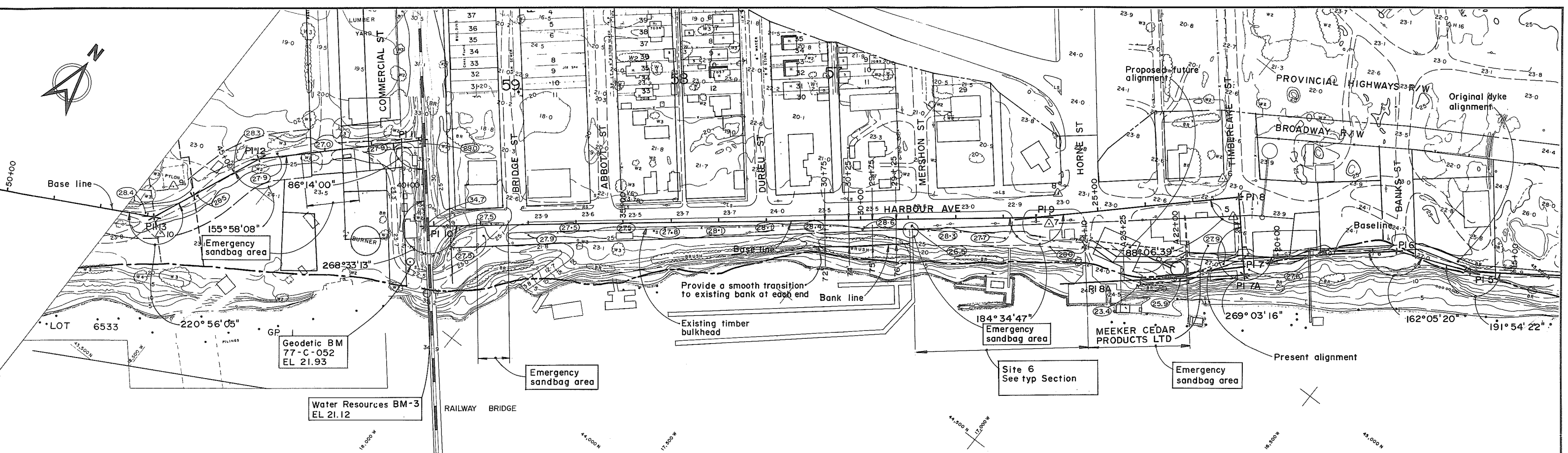
SURVEY MONUMENTS			
Mon	Type	Co-Ordinates	
		North	East
1	Bolt	46,327.23	15,170.82
2	Pipe in concrete	46,295.43	15,275.30
3	Lead plug	45,861.67	15,751.10
4	Lead plug	45,971.69	15,837.73

NOTES  
• For General Notes see Dwg 4843-1-7

LEGEND  
 Asphalt pavement  
 Surveyed EL Oct, 1985  
 Monument



<b>CBA ENGINEERING LTD.</b> CONSULTING ENGINEERS - VANCOUVER - CANADA	RECOMMENDED _____ CHIEF, PROJECTS DIV.	Province of British Columbia Ministry of Environment WATER MANAGEMENT BRANCH CANADA-BRITISH COLUMBIA FRASER RIVER FLOOD CONTROL 1988 AGREEMENT PROJECT NO. 7 - DISTRICT OF MISSION CONTRACT NO. 1 - MISSION DYKES ALIGNMENT PLAN	DESIGNED <u>DLC/EMH</u> DRAWN <u>WN/EC</u> CHECKED <u>DLC/EMH</u> SCALE <u>AS SHOWN</u> DWG. NO. <u>4843-1-2A</u>	SURVEYED _____ DATE _____ FILE NO. <u>0281550-C25-1</u> DATE <u>MARCH 1990</u> SHEET <u>1</u> OF <u>4</u> SHEETS
	APPROVED _____ DIRECTOR		Neg No 342040	



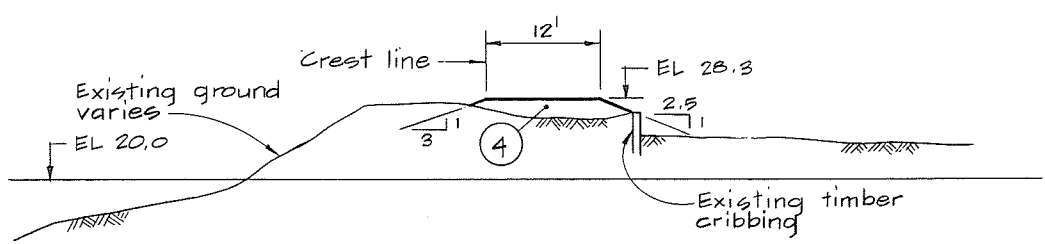
Provide a smooth transition to existing bank at each end

Existing timber bulkhead

Site 6  
See typ Section

FRASER RIVER

← FLOW



TYP SECTION  
SITE 6 CH 25+30 to CH 28+90

BASE LINE DATA					
PI	Bearing	Chainage	Interval	Co-Ordinates	
				North	West
5	S 67°37'25" W	15+90.62	159.64	45,415.81	16,397.45
6	S 49°42'45" W	17+50.25	323.25	45,355.04	16,545.07
7	N 41°13'59" W	20+73.50	130.09	45,146.02	16,791.65
8	S 46°52'41" W	22+03.50	427.27	45,243.85	16,877.39
9	S 51°27'28" W	26+30.26	1281.63	44,951.79	17,189.25
10	N 39°59'19" W	39+12.49	179.94	44,153.21	18,191.68
11	S 46°14'40" W	40+92.43	346.87	44,291.08	18,307.32
12	S 22°09'48" W	44+39.30	249.34	44,051.19	15,557.86
13		46+88.64		43,820.27	18,651.92
7	S 40°17'15" E	20+73.50	34.00	45,146.02	16,791.65
A7	S 49°42'45" W	A20+73.50	326.50	45,120.08	16,769.66
A8		A24+00.00		44,908.96	17,018.72

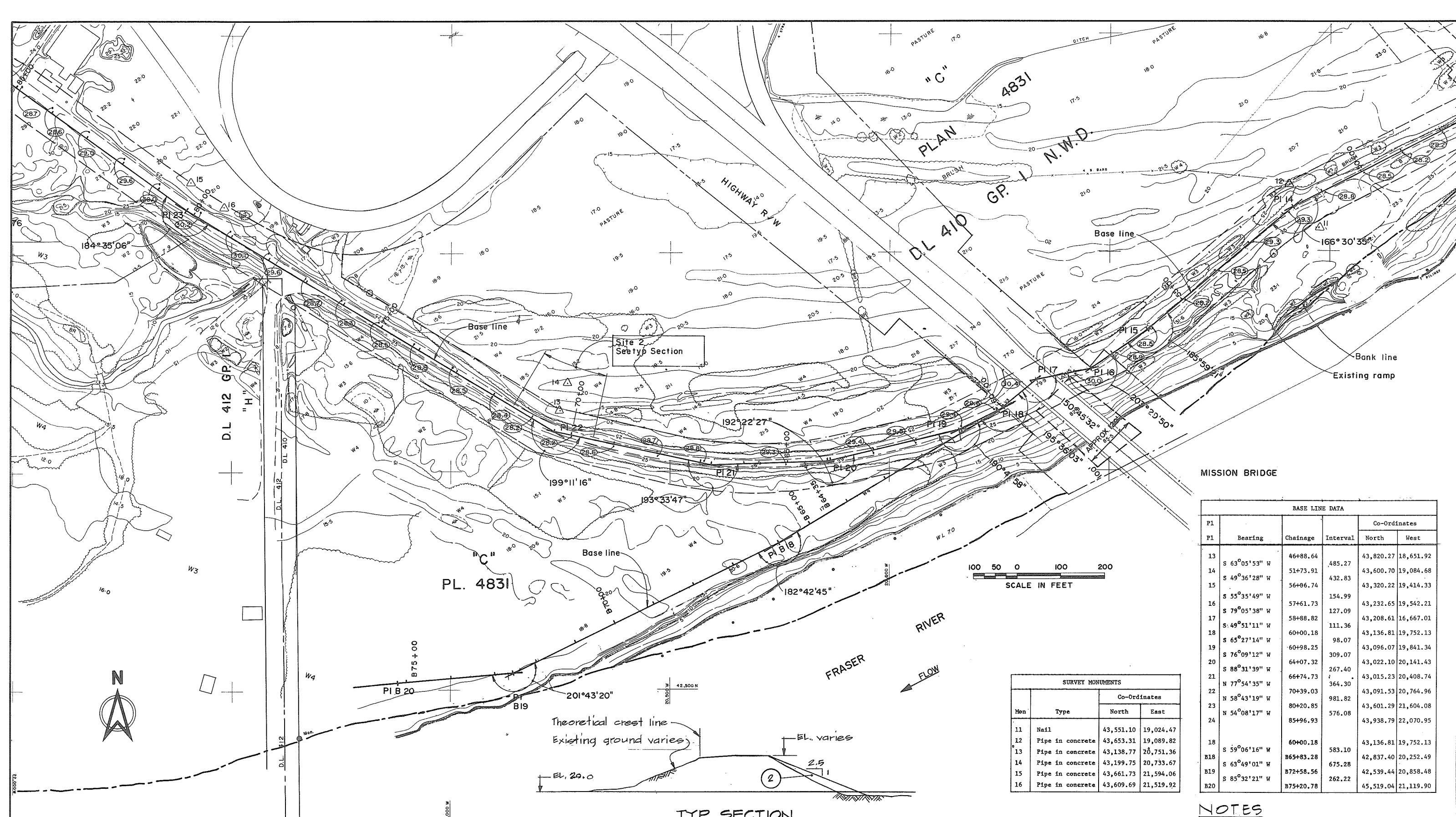
SURVEY MONUMENTS			
Mon	Type	Co-Ordinates	
		North	East
5	Lead plug	45,204.49	16,859.13
6	Fire hydrant	45,243.98	16,929.33
7	Nail	44,953.83	17,155.05
8	Lead plug	45,027.81	17,182.78
9	Mark	43,898.26	18,659.30
10	Bolt	43,801.97	18,623.88

NOTES

- For Legend see Dwg 4843-1-2
- For General Notes see Dwg. 4843-1-7



<p><b>CBA ENGINEERING LTD.</b> CONSULTING ENGINEERS - VANCOUVER - CANADA</p>	RECOMMENDED CHIEF, PROJECTS DIV.	<p>Province of British Columbia Ministry of Environment WATER MANAGEMENT BRANCH CANADA-BRITISH COLUMBIA FRASER RIVER FLOOD CONTROL 1968 AGREEMENT PROJECT NO. 7 - DISTRICT OF MISSION CONTRACT NO 1 - MISSION DYKES ALIGNMENT PLAN</p>	DESIGNED DLC/EMH	SURVEYED DATE
	DATE March 1990		APPROVED DIRECTOR	CHECKED DLC/EMH
NO. BY REVISIONS DATE	DATE	DWG. NO. 4843-1-3A	SCALE AS SHOWN	DATE MARCH 1990
			Neg No 342041	SHEET 2 OF 4 SHEETS



**MISSION BRIDGE**

BASE LINE DATA					
P1	Bearing	Chainage	Interval	Co-Ordinates	
				North	West
13	S 63°05'53" W	46+88.64	485.27	43,820.27	18,651.92
14	S 49°36'28" W	51+73.91	432.83	43,600.70	19,084.68
15	S 55°35'49" W	56+06.74	154.99	43,320.22	19,414.33
16	S 79°05'38" W	57+61.73	127.09	43,232.65	19,542.21
17	S 49°51'11" W	58+88.82	111.36	43,208.61	16,667.01
18	S 65°27'14" W	60+00.18	98.07	43,136.81	19,752.13
19	S 76°09'12" W	60+98.25	309.07	43,096.07	19,841.34
20	S 88°31'39" W	64+07.32	267.40	43,022.10	20,141.43
21	N 77°54'35" W	66+74.73	364.30	43,015.23	20,408.74
22	N 58°43'19" W	70+39.03	981.82	43,091.53	20,764.96
23	N 54°08'17" W	80+20.85	576.08	43,601.29	21,604.08
24		85+96.93		43,938.79	22,070.95
18	S 59°06'16" W	60+00.18	583.10	43,136.81	19,752.13
B18	S 63°49'01" W	865+83.28	675.28	42,837.40	20,252.49
B19	S 85°32'21" W	872+58.56	262.22	42,539.44	20,858.48
B20		875+20.78		45,519.04	21,119.90

SURVEY MONUMENTS			
Mon	Type	Co-Ordinates	
		North	East
11	Nail	43,551.10	19,024.47
12	Pipe in concrete	43,653.31	19,089.82
13	Pipe in concrete	43,138.77	20,751.36
14	Pipe in concrete	43,199.75	20,733.67
15	Pipe in concrete	43,661.73	21,594.06
16	Pipe in concrete	43,609.69	21,519.92

**TYP SECTION**  
SITE 2 CH 69+50 to CH 71+50

**NOTES**  
 • For Legend see Dwg 4843-1-2  
 • For General Notes see Dwg 4843-1-7



**CBA ENGINEERING LTD.**  
CONSULTING ENGINEERS - VANCOUVER - CANADA

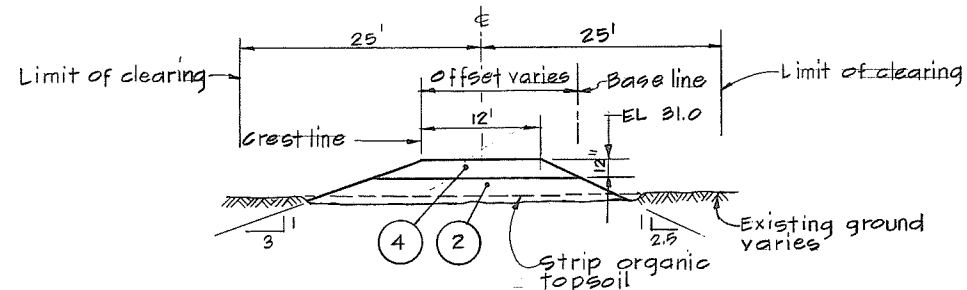
NO.	BY	REVISIONS	DATE
1	RC	As constructed	March 1990

RECOMMENDED \_\_\_\_\_ CHIEF, PROJECTS DIV.  
 DATE \_\_\_\_\_  
 APPROVED \_\_\_\_\_ DIRECTOR  
 DATE \_\_\_\_\_

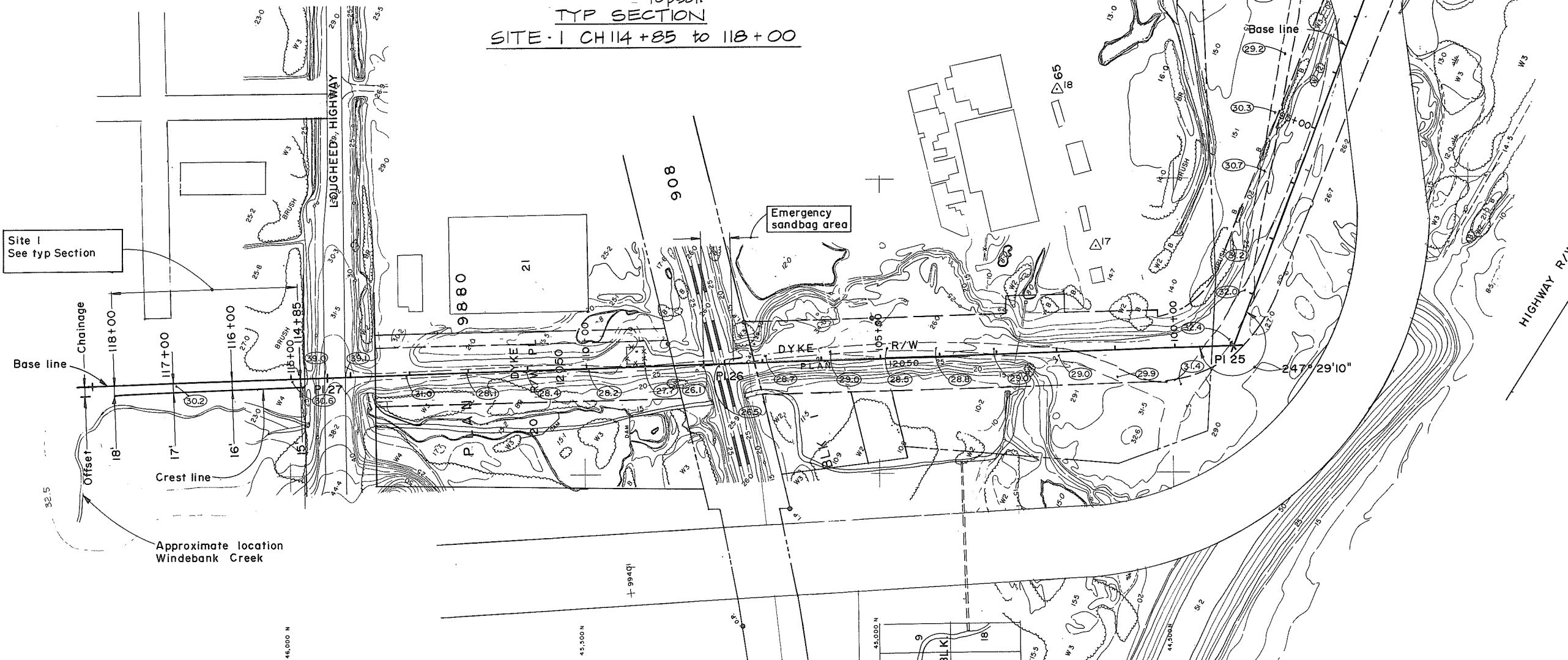
Province of British Columbia  
 Ministry of Environment  
 WATER MANAGEMENT BRANCH  
 CANADA - BRITISH COLUMBIA  
 FRASER RIVER FLOOD CONTROL 1988 AGREEMENT  
 PROJECT NO. 7 - DISTRICT OF MISSION  
 CONTRACT NO. 1 - MISSION DYKES  
 ALIGNMENT PLAN

DESIGNED	DLC/EMH	SURVEYED	
DRAWN	WN	DATE	
CHECKED	DLC/EMH	FILE NO.	0281550-C25-1
SCALE	AS SHOWN	DATE	MARCH 1990
DWG. NO.	4843-1-4A	SHEET	3 OF 4 SHEETS

Neg No 342042



TYP SECTION  
SITE 1 CH 114+85 TO 118+00




BASE LINE DATA					
PI	Bearing	Chainage	Interval	Co-Ordinates	
				North	West
24	N 69°17'03" W	85+96.93	1297.12	43,938.79	22,070.95
25	N 01°47'53" W	98+94.05	864.87	44,397.62	23,284.21
26	N 01°47'53" W	107+58.92	676.60	45,262.06	23,311.35
27	N 01°47'53" W	114+35.52	400.00	45,938.33	23,332.58
28	N 01°47'53" W	118+35.52		46,338.09	23,346.29

SURVEY MONUMENTS			
Mon	Type	Co-Ordinates	
		North	East
17	Nail	44,632.35	23,117.90
18	Nail	44,697.67	22,852.72

**NOTES**  
 • For Legend see Dwg 4843-1-2  
 • For General Notes see 4843-1-7

Neg No 342043

 <b>CBA ENGINEERING LTD.</b> CONSULTING ENGINEERS - VANCOUVER - CANADA	RECOMMENDED <small>CHIEF, PROJECTS DIV.</small>	Province of British Columbia Ministry of Environment WATER MANAGEMENT BRANCH CANADA - BRITISH COLUMBIA FRASER RIVER FLOOD CONTROL 1968 AGREEMENT PROJECT NO. 7 - DISTRICT OF MISSION CONTRACT NO. 1 - MISSION DYKES ALIGNMENT PLAN	DESIGNED <b>DLG/EMH</b> DRAWN <b>Wn</b> CHECKED <b>DLG/EMH</b> SCALE <b>AS SHOWN</b> DWG. NO. <b>4843-1-5A</b>	SURVEYED DATE FILE NO. <b>0281550-C25-1</b> DATE <b>MARCH 1990</b> SHEET <b>4</b> OF <b>4</b> SHEETS
	APPROVED <small>DIRECTOR</small>	PROJECT NO. 7 - DISTRICT OF MISSION CONTRACT NO. 1 - MISSION DYKES ALIGNMENT PLAN		
NO. BY <b>1</b> REVISIONS <b>As constructed</b> DATE <b>March 1990</b>	DATE DATE			

