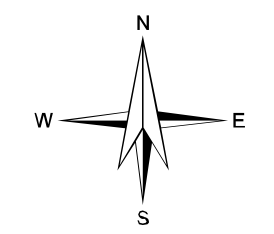


**Glen Valley**  
 glen\_valley\_19  
**Local Diking Authority**  
 Glen Valley Dyking District

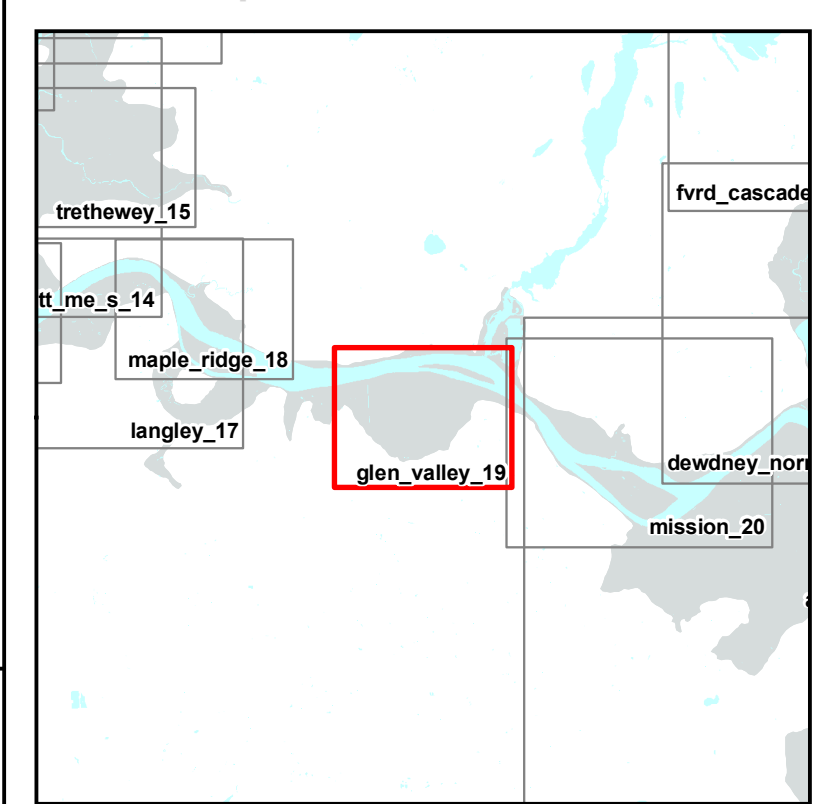
- Legend**
- Pumpstation / Floodbox
  - Pumpstation
  - Floodbox
  - Open Culvert
  - ⊕ Staff Gauge
  - ⊕ Dike Crest Gauge
  - ⊕ Water Survey Canada (WSC) Real Time Gauge
  - Relief Well
  - ▽ Low Dike
  - ▲ Special Concern
  - + Metric Stationing 0+000
  - + Imperial Stationing 0+00
  - ◆ Flood Profile Points Incl. Freeboard †
  - Flood Profile Line
  - RipRap
  - Local Authority's Standard Dike §
  - Local Authority's Non-Standard Dike §§
  - Other Flood Control Works
  - Fish and Wildlife Water Related Structure
  - Dikes Outside Local Area (See Note 1)
  - Floodplain
  - Municipal Boundary
  - Indian Reserves
  - Provincial Park
  - Regional District Park
  - Water Pipeline
  - Sewer Pipeline
  - Gas Pipeline
  - Energy Pipeline
  - Oil
  - Electrical transmission line
  - Pipeline
  - Railway



Note 1: Dikes are shown for reference purposes and are outside local diking authority area.

**Notes Specific to Local Diking Authorities**

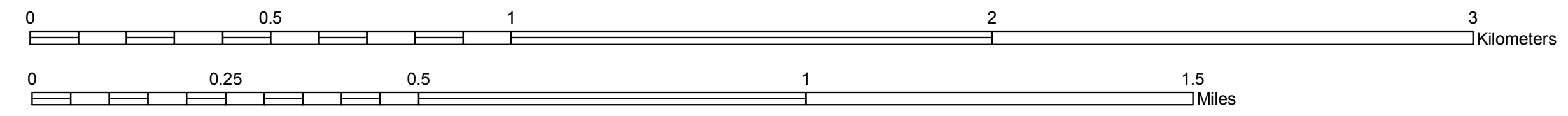
**Index Map**



Maps produced for Ministry of Environment,  
 Lower Mainland Region.  
 Printed from Digital Files by  
 the Integrated Land Management Bureau  
 Map Projection: Albers, NAD83  
 Grid Projection: UTM Zone 10N, NAD 83  
 Revised Date: October 21, 2009  
 File: glen\_valley\_19

**GLEN VALLEY**

1:10,000



**IMPORTANT NOTICE AND DISCLAIMER**  
 The floodplain boundaries and related flood protection infrastructure shown are provided to support flood emergency preparedness, planning and response; broad-based floodplain management, planning and reviews; and other related activities. It is NOT intended to replace detailed floodplain maps designated under the 1987 Canada/BC Floodplain Mapping Agreement.  
**FLOODING MAY OCCUR OUTSIDE OF THE FLOODPLAIN AREAS SHOWN.**  
 The data was compiled from various sources; it is not warranted as to its accuracy or sufficiency by the Ministry of Environment, and is not intended for legal purposes.  
 § Standard dike - a flood protection structure that meets, or has met, provincial dike standards that are regulated by the Inspector of Dikes under the Dike Maintenance Act. Due to morphological, hydrological, and other changes in or about river systems, such a dike shown on the map may not continue to meet current standards.  
 IMPORTANT: To verify a standard dike's current status, the Inspector of Dikes office should be contacted.

§§ Non-standard dike - a flood protection structure that has a lower level of protection than that provided by a standard dike. Flood protection works that conform to this classification often protect rural agricultural lands and are sometimes referred to as agricultural dikes.  
 † The Fraser River flood profile plus freeboard is derived from the Fraser River Hydraulic Model Update Report, March 2008, by Northwest Hydraulic Consultants. "Standard dikes" have not been evaluated against this new profile and may be lower than the elevation of this new profile plus freeboard.  
 Details of this study may be found on the Ministry of Environment, Water Stewardship Division web site.  
 The Flood Profile plus Freeboard denotes the standard dike crest elevations established by the Inspector of Dikes for the Fraser River dikes. Flooding elevations for buildings and other development in the floodplain are established by and are the responsibility of local government and other development approval officials. These flooding elevations may vary from the flood profile plus freeboard elevations shown.

**Glen Valley**  
 glen\_valley\_19