

# HATZIC VALLEY

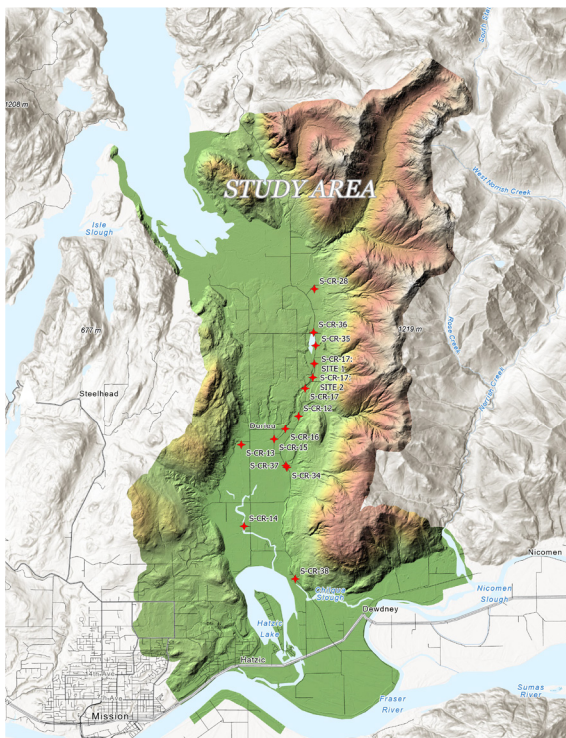
## EMERGENCY WORKS PROGRAM

Newsletter #2 • January 2024

### WHAT'S HAPPENING?

The 2021 atmospheric river event (ARE) caused substantial sediment movement, flooding, and changes through BC's river and creek systems, resulting in extensive damage. In response, the Province of BC, led by the Ministry of Environment and Climate Change Strategy (ENV), established a program to identify, prioritize, and address sites that have experienced adverse environmental impacts from the ARE.

As part of this program, emergency response work is underway in the Hatzic Valley to remove sediment and repair damage caused by the ARE. Activities have continued into 2023 and are planned for 2024.



**MAP:** Map showing the Hatzic Valley project site locations (red dots).

The latter part of 2023 was an impactful period for the program. Some of the achievements and outcomes include the following:

- Design and permitting was completed for Eng and McNab Creeks
- Construction was carried out and completed on Eng and McNab Creeks
- Design work for several project sites
- Construction on Lagace Creek had to be postponed until 2024 due to the presence of spawning salmon
- Western toads were noted in Eng Creek therefore, measures were put in place to enhance their habitat

### WHAT'S BEEN DONE?

In total, 12 sites were previously identified in the Hatzic Valley for sediment removal and works. To date, the work has been completed at five sites:

- ✓ Pattison Creek
- ✓ Carratt Creek
- ✓ Davies Creek
- ✓ Eng Creek - completed November 3<sup>rd</sup>, 2023
- ✓ McNab Creek - completed November 3<sup>rd</sup>, 2023



## WHAT'S NEXT?

2024 will see the last of the sediment removal projects being designed and constructed. The additional sites scheduled as part of the workplan are:

- North Herford Creek
- South Herford Creek
- Lagace Creek (Allan Lake to Pattison Creek)
- Saprano Creek
- Lagace Creek (Pattison Creek to Farms Road and Stave Lake Road Junction)

Additional analysis needs to be carried out for Lagace Creek (Dale Road to Hatzic Lake) to determine the appropriate path forward.

## SEDIMENT REMOVAL SPOTLIGHT: LAGACE CREEK (PATTISON TO FARMS ROAD)

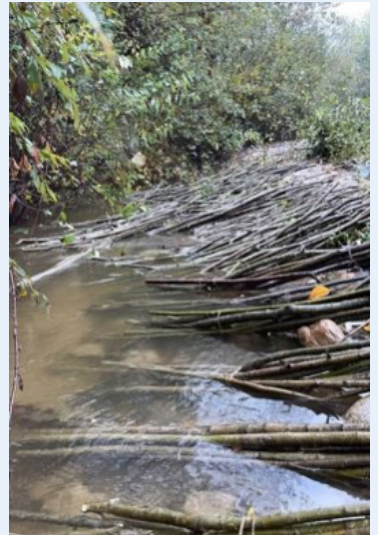
The sediment removal work is occurring in streams that often have other values needing protection. Lagace Creek is a fish-bearing watercourse that is home to various salmon and trout species during their life stages. The sediment removal process must be done at a certain time, and measures must be carried out to protect the aquatic species that call Lagace Creek home. Design elements have been incorporated, where possible, to enhance the habitat conditions, and these include the following:

1. Sediment removal in selected locations by creating pools and riffles to support fish during varying flow conditions.
2. Using erosion protection measures utilizing vegetation (bioengineering) will provide shade, water temperature variability, and nutrient and food sources (insects) that enhance fish habitat.

With the return of the spawning salmon in Lagace Creek, we were unable to carry out the work in 2023 and had to defer the activities in the creek. In order to protect the salmon and other fish that are found in the creek, our regulatory permits designate specific dates when work can be carried out, and the next window of opportunity will be in August 2024.



▲ Salmon spawning in Lagace Creek



▲ Collection of bioengineering stock

## WHO?

A Task Force has been put together, including elected officials, community partners, and rights and title holders and is co-led with the Ministry of Environment and Climate Change Strategy. This team is focused on identifying solutions, approving work plans, and securing proper permitting.



## MORE INFORMATION?

Newsletters will be published every 3 months, providing updates on site progress. For more information, project updates, and answers to frequently asked questions, please visit [bit.ly/SedimentProjectUpdates](https://bit.ly/SedimentProjectUpdates).