

LOG OF TEST HOLE

TEST HOLE NO.
MW06-3

LOCATION: See Drawing 19-4732-1-4

CLIENT: ENDEAVOR PROPERTIES



PROJECT: 819 Yates Street
Phase 2 Environmental Site Assessment

TOP OF HOLE ELEV:

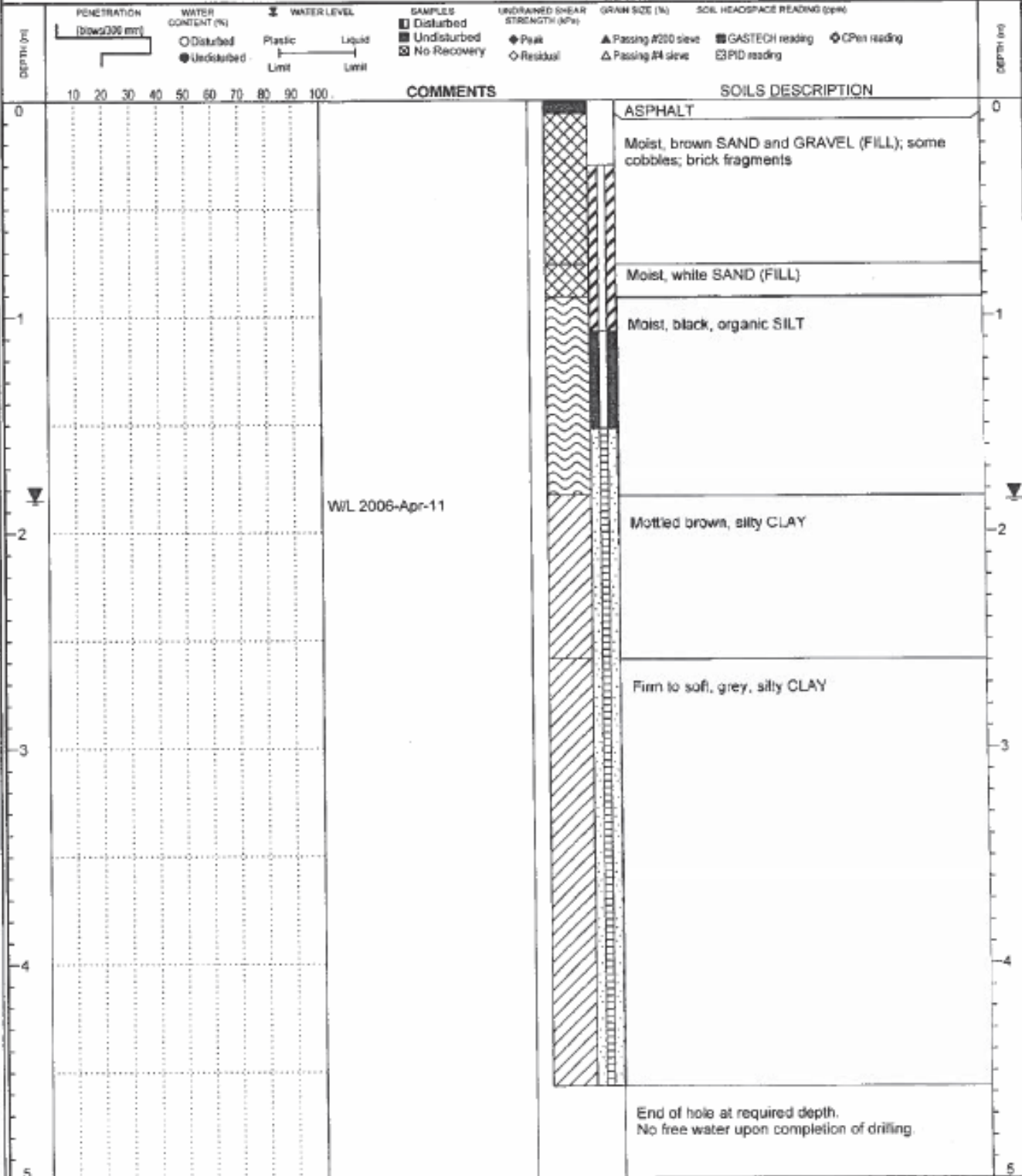
DATE: April 10, 2006

METHOD: Solid Stem Auger

FILE NO.: 19-4732-1

DRILLING CO.: Drilwell Enterprises Ltd.

INSPECTOR: RAK



WELL ID: MW06-3

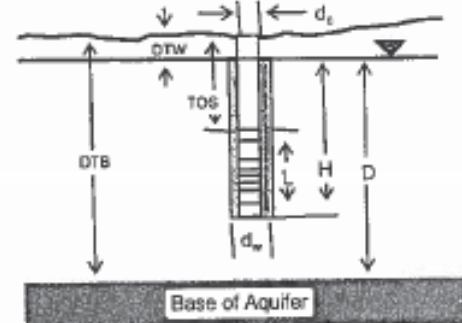
Local ID: 19-4732-1

Date: 11/04/2006

Time: 12:00:00 AM

INPUT

Construction:	
Casing dia. (d_c)	5.2 cm
Annulus dia. (d_w)	15 cm
Screen Length (L)	3 Meter
Depths to:	
water level (DTW)	1.85 Meter
top of screen (TOS)	1.5 Meter
Base of Aquifer (DTB)	5 Meter
Annular Fill:	
across screen --	Open Hole
above screen --	Backfill
Aquifer Material -- Clay soils (surface)	



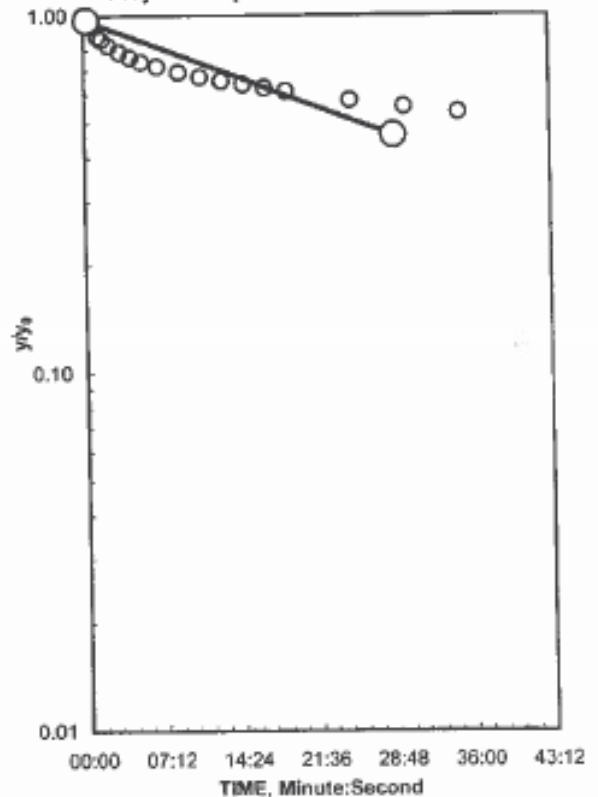
COMPUTED

L_{wetted}	2.65 Meter
$D =$	3.15 Meter
$H =$	2.65 Meter
$Ur_w =$	4.24
y_0 -DISPLACEMENT	2.15 Meter
y_0 -SLUG	2.37 Meter
From look-up table using L/r_w	
Partial penetrate $A =$	1.738
$B =$	0.229
$\ln(Re/r_w) =$	1.098
$Re =$	0.74 Meter
Slope =	0.000189 \log_{10}/sec
$t_{90\%}$ recovery =	5305 sec

Input is consistent.

K = 2E-07 Meter/Second

Adjust slope of line to estimate K



REMARKS:

Bouwer and Rice analysis of slug test, WRR 1976

