

LOG OF TEST HOLE

TEST HOLE NO.
05-38d

LOCATION: 4906 Delta Street, Ladner

CLIENT: Witt's End Holdings
PROJECT: 4906 Delta Street, Ladner

TOP OF HOLE ELEV: 2.1 m (est.)



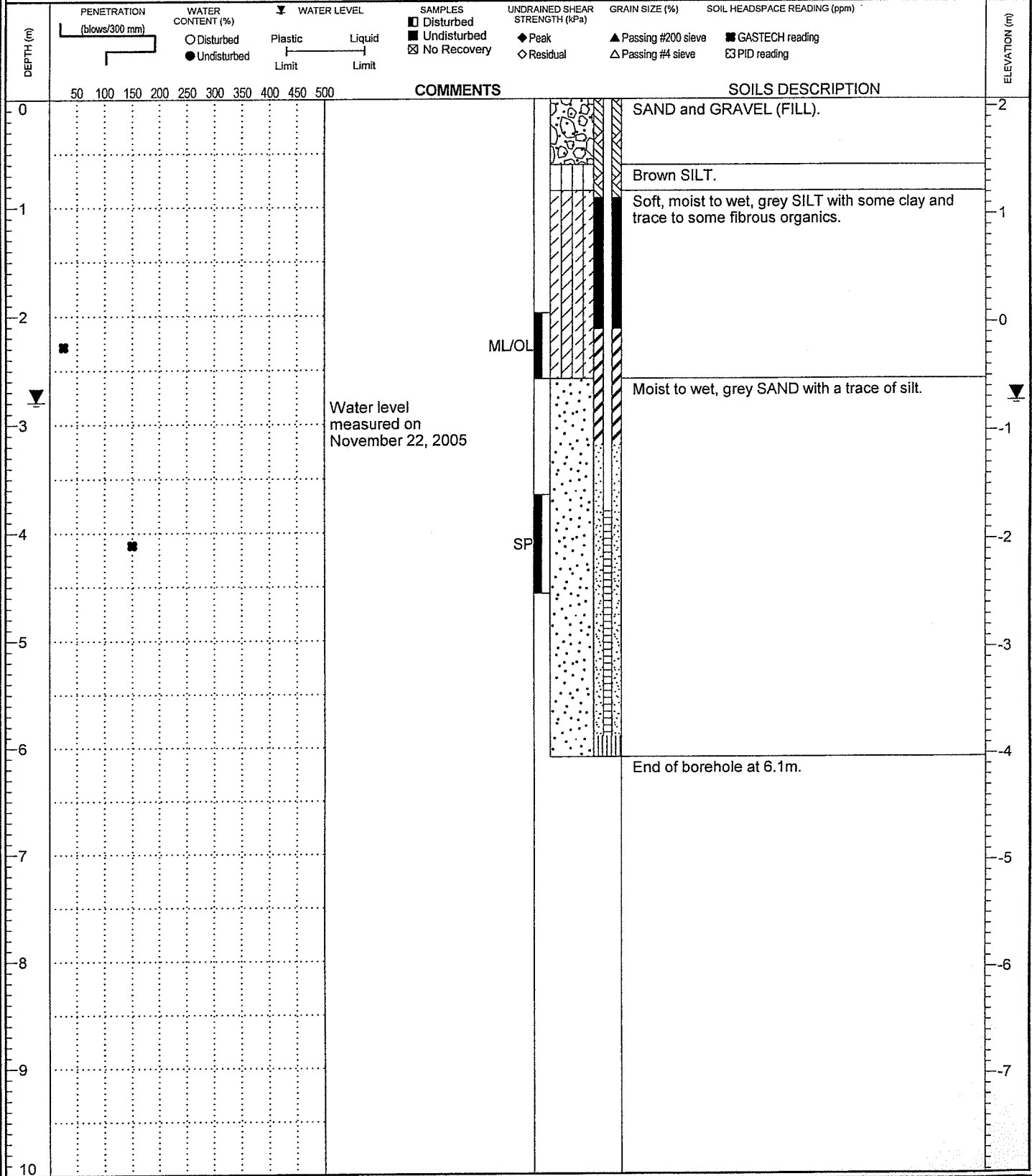
METHOD: Solid/Hollow Stem Auger

DATE: Oct 13/05

DRILLING CO.: Uniwide Drilling Inc.

FILE NO.: 19-4256-0

INSPECTOR: SB



LOG OF TEST HOLE 19-4256-0.GPJ THURBER BC.GDT 14/12/06- THURBER BC.GLB