

LOG OF TEST HOLE

TEST HOLE NO.  
**05-71**

LOCATION: 10552 Industrial Ave

CLIENT: Double J Developer Holding Ltd.

TOP OF HOLE ELEV: Est. 97.17 m

PROJECT: 10552 Industrial Avenue,  
Maple Ridge

METHOD: Rotary vibra-core

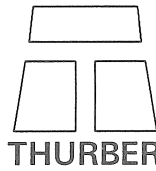
DATE: May 25, 2005

DRILLING CO.: Sonic Drilling Ltd.

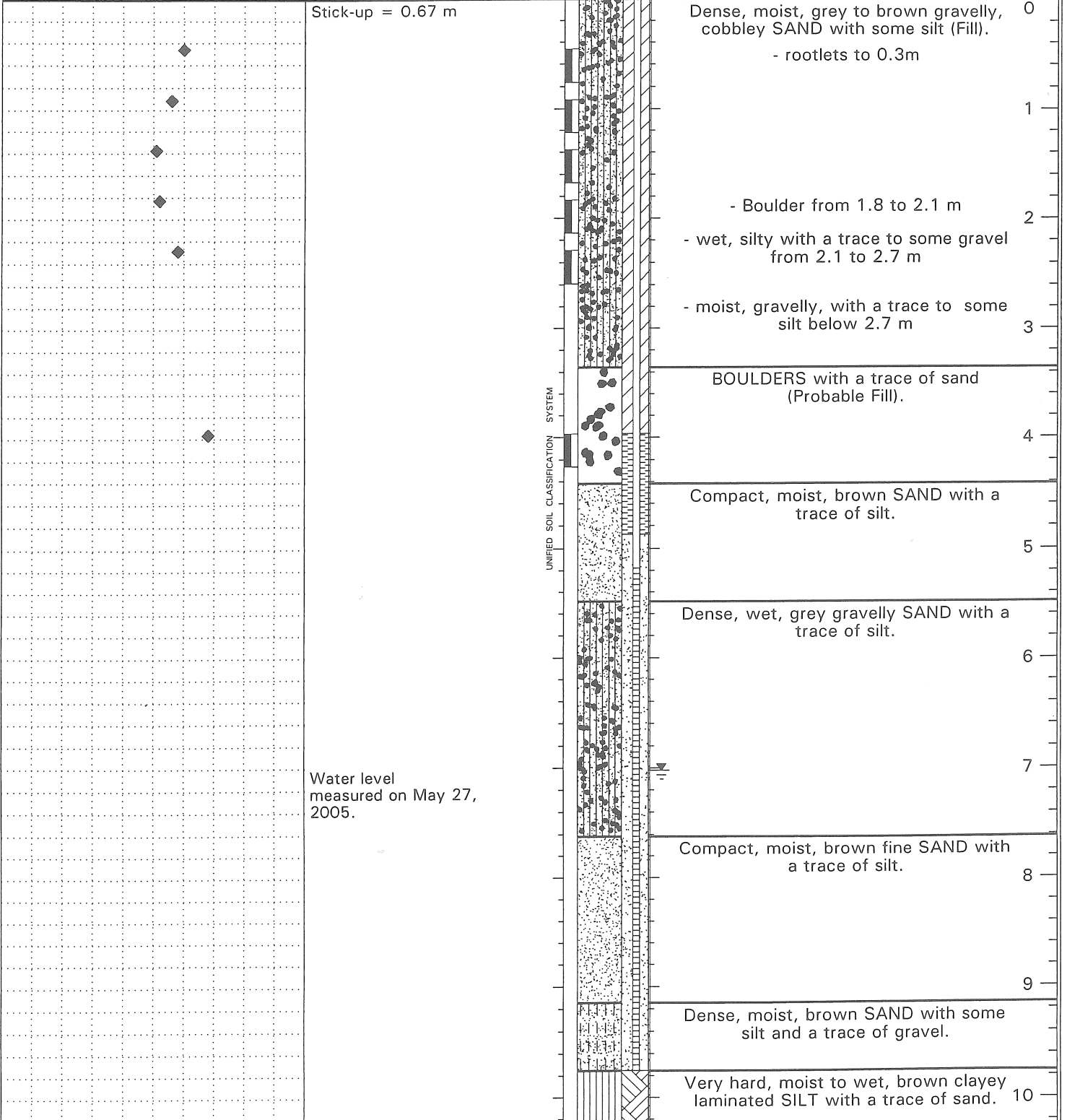
FILE NO.: 19-4212-1

SCALE: 1:50

INSPECTOR: GPA/CU



<b>PENETRATION</b> (blows per 300 mm)	<b>WATER CONTENT (%)</b> ○ Disturbed ● Undisturbed	<b>WATER LEVEL</b> Plastic Limit Liquid Limit	<b>SAMPLES</b> □ Disturbed ■ Undisturbed ⊗ No recovery	<b>HEAD SPACE</b> ◆ (ppm)	<b>GRAIN SIZE (%)</b> ▲ Passing #200 sieve △ Passing #4 sieve
--	--	---	---	------------------------------	---



LOG OF TEST HOLE

LOCATION: 10552 Industrial Ave

CLIENT: Double J Developer Holding Ltd.

TOP OF HOLE ELEV: Est. 97.17 m

PROJECT: 10552 Industrial Avenue,  
Maple Ridge

METHOD: Rotary vibra-core

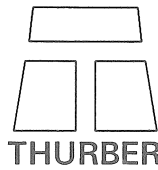
DATE: May 25, 2005

DRILLING CO.: Sonic Drilling Ltd.

FILE NO.: 19-4212-1

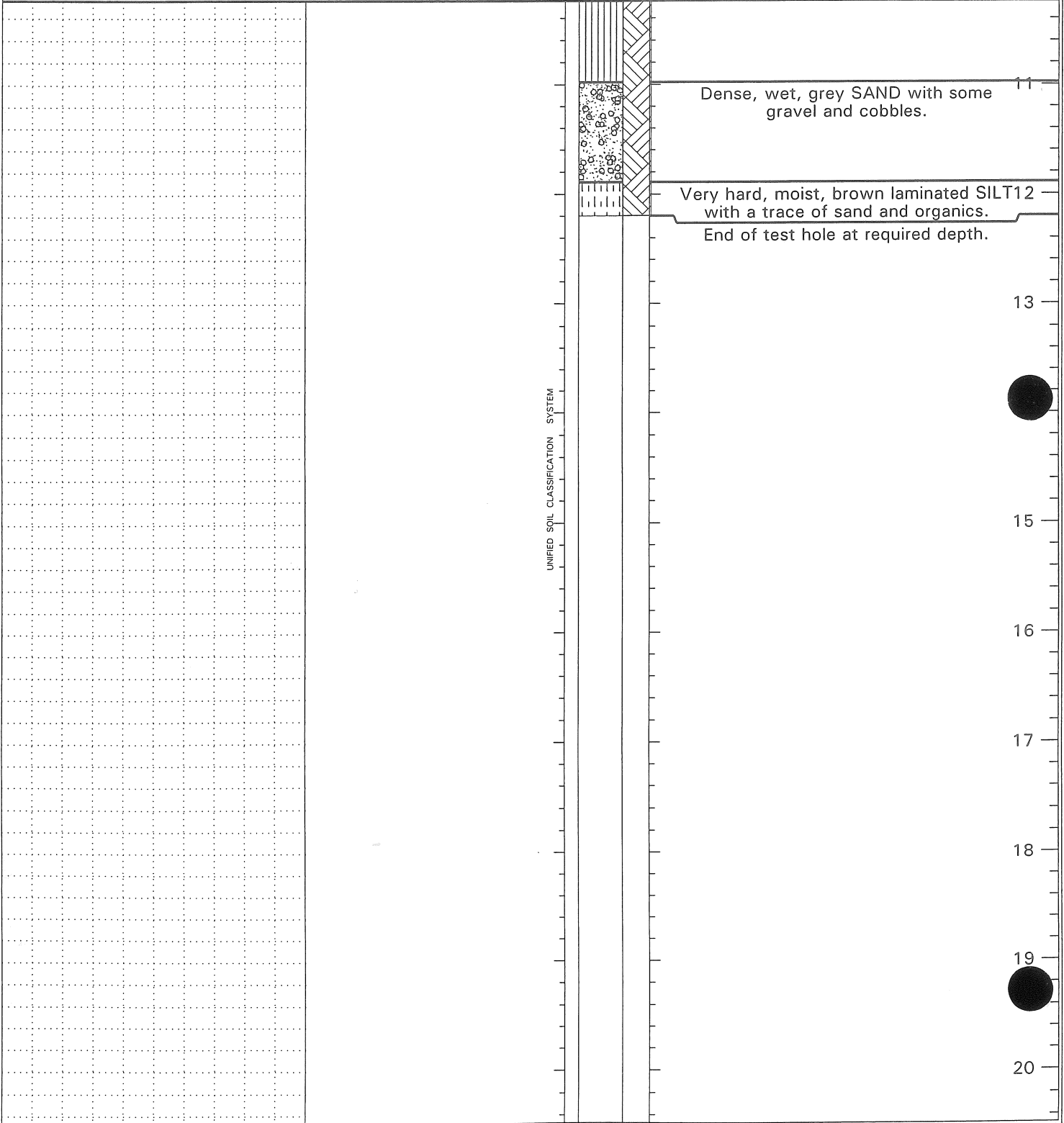
SCALE: 1:50

INSPECTOR: GPA/CU



<b>PENETRATION</b> (blows per 300 mm)	<b>WATER CONTENT (%)</b> ○ Disturbed ● Undisturbed	<b>WATER LEVEL</b> Plastic Limit    Liquid Limit	<b>SAMPLES</b> □ Disturbed ■ Undisturbed ⊠ No recovery	<b>HEAD SPACE</b> ◆ (ppm)	<b>GRAIN SIZE (%)</b> ▲ Passing #200 sieve △ Passing #4 sieve	<b>DEPTH (METRES)</b>
50 100 150 200 250 300 350 400 450						

SOILS DESCRIPTION



UNIFIED SOIL CLASSIFICATION SYSTEM