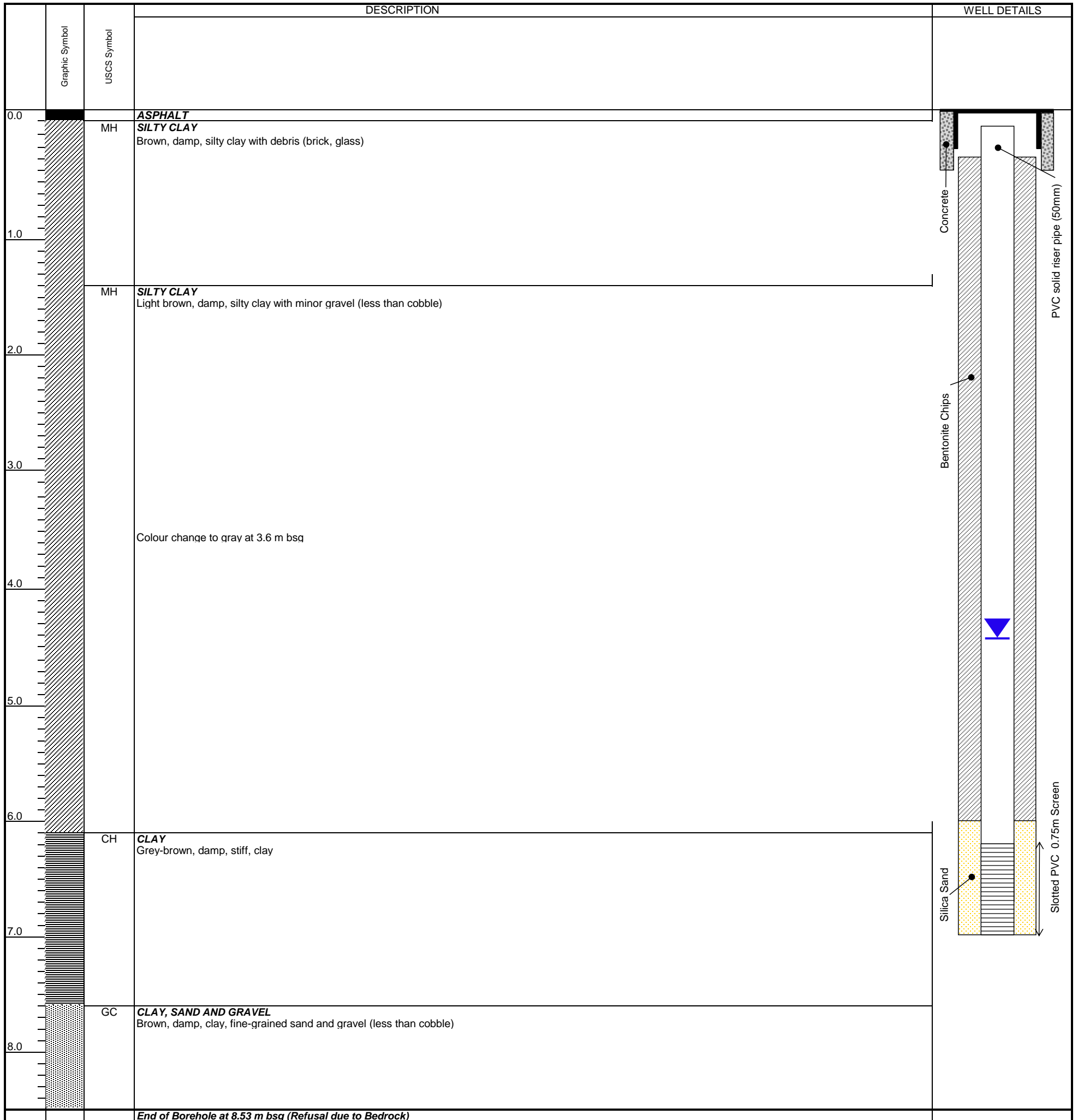




REPRESENTATIVE BOREHOLE LOG

BOREHOLE NAME	BH15-5	WATER LEVEL BELOW TOC (M)	4.46
BOREHOLE ADDRESS	2353 Douglas Street	WATER LEVEL BELOW SURFACE (M)	4.51
BOREHOLE MUNICIPALITY	Victoria	TOTAL BOREHOLE DEPTH (M)	8.53
BOREHOLE SITE ID	8855	BOREHOLE TOC ELEVATION (M ASL)	12.60
LATITUDE	48.43456358	BOREHOLE SURFACE ELEVATION (M ASL)	12.65
LONGITUDE	-123.3645395	TOP OF SCREEN (M BGS)	6.25
BOREHOLE LOCATION	35.5 metres south of the north Site boundary, 2.5 metres east of the west site boundary	BOTTOM OF SCREEN (M MGS)	7.00
FILE NAME	MW15-3_Representative_BH_Log		
DATE DRILLED	27 May 2015		
DRILL METHOD	Truckmount Auger Rig		
BOREHOLE DIAMETER	150 mm	HYDRAULIC CONDUCTIVITY (M/S)	4.828E-7 to 5.050E-7



Any use which a third party makes of this document, or any reliance on or decisions to be made based on it, are the responsibility of such third parties. CSAP/MOE are not responsible for any use or modification of this document. CSAP/MOE accept no responsibility for damages, if any, suffered by any third party as a result of decisions made or actions taken based on this document.