



**MORROW ENVIRONMENTAL CONSULTANTS INC**

Client :  
Shell Canada Products

**Borehole No. : BH01-1**

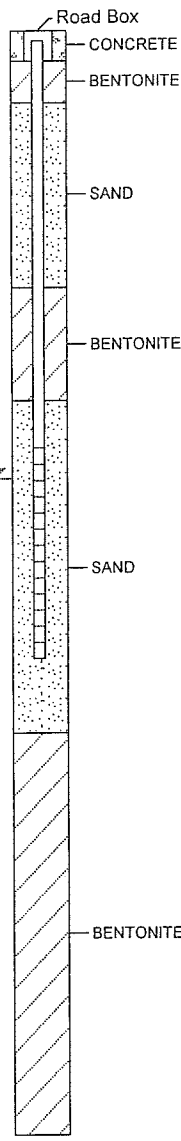
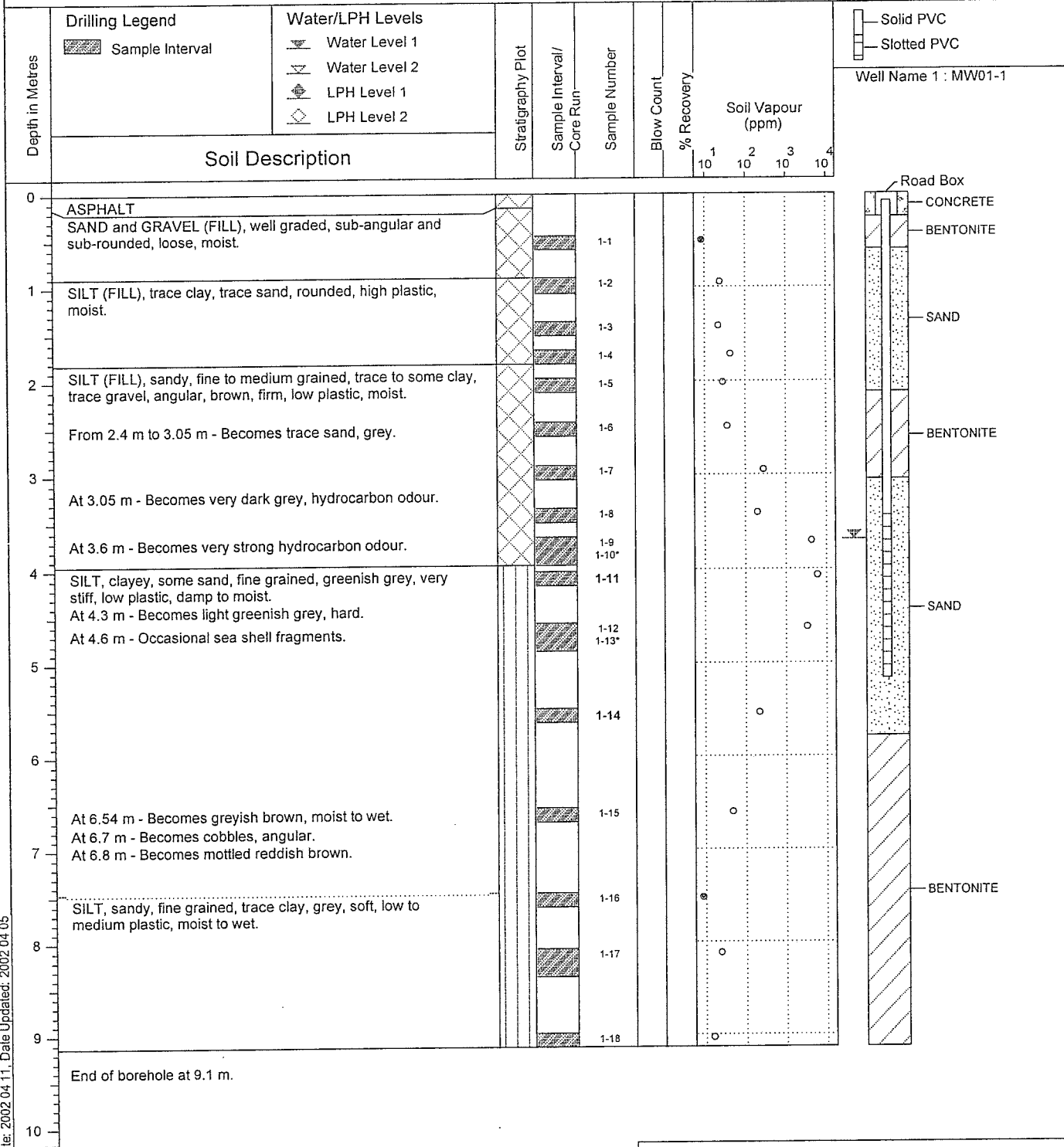
Location :  
3351 Douglas St., Victoria, BC

(Page 1 of 1)

Drilling Contractor : Uniwide Drilling Co. Ltd.  
Drilling Method : Hollow Stem Auger  
Borehole Dia. (m) : 0.20  
Pipe/Slotted Pipe Dia. (m): 0.05, 0.05

Date Water Lev. Meas. : 2001 05 01  
Ground Surf Elev. (m) : 11.69  
Top of Casing Elev. (m) : 11.614

Project Number : V0037  
Borehole Logged By : Stephen Pinto / Ardith Riddell  
Date Drilled : 2001 03 26  
Log Typed By : APM



**Notes:**  
 Cicuto vacuum to a depth of 1.83 m.  
 Concrete pipe at 0.91 m. Stepped out 0.8 m to the south.  
 Concrete pipe at 1.22 m. Stepped out 1.0 m to the south-west.  
 \*1-10 is a blind field duplicate of 1-9.  
 \*1-13 is a blind field duplicate of 1-12.

Print Date: 2002.04.11, Date Updated: 2002.04.05