

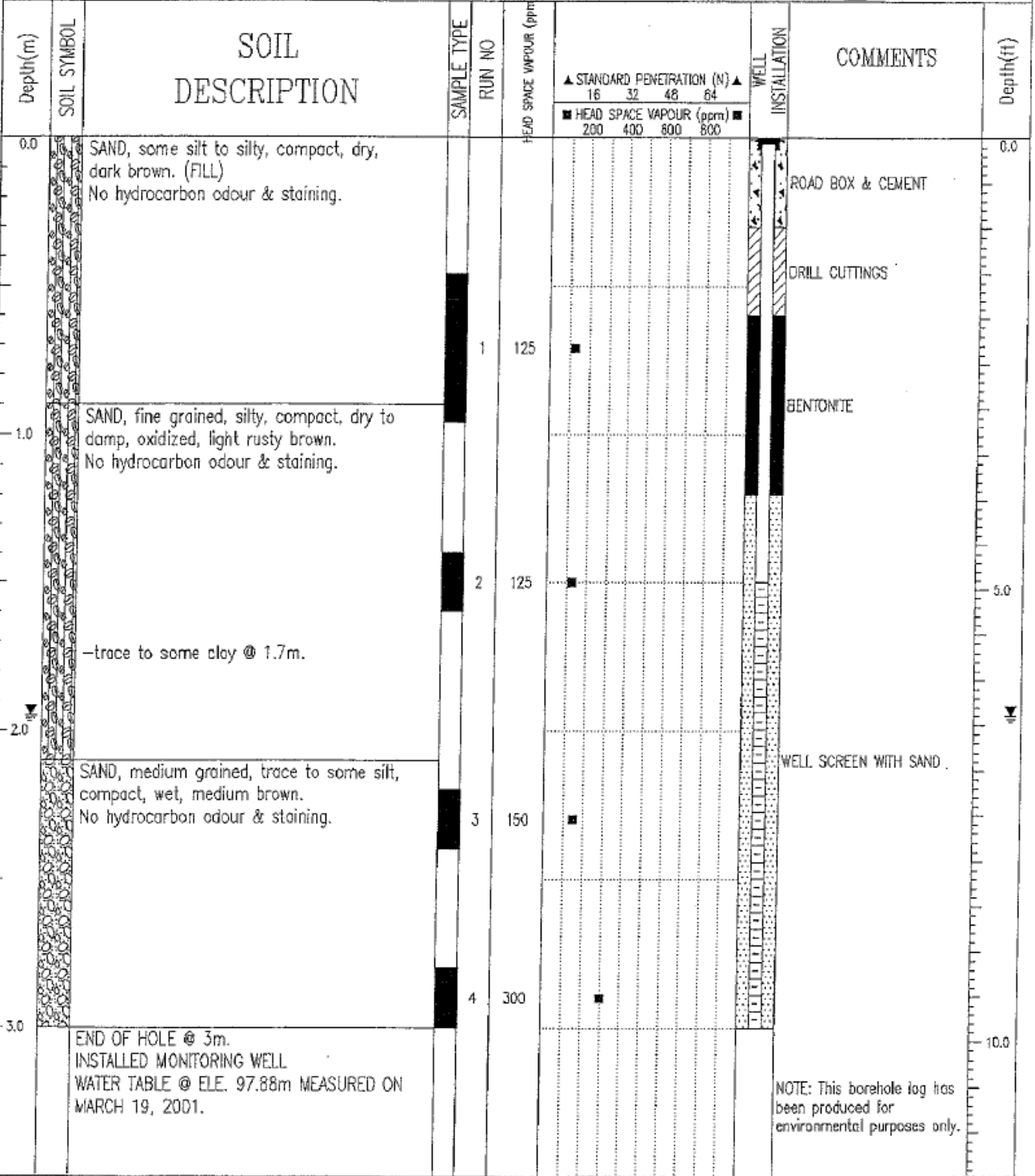
PROJ.: STAGE 2 PSI BOREHOLE LOG BOREHOLE NO: MW03

SE. CORNER OF RICHTER ST. & VAUGHAN AVE. LOCATION: SEE FIGURE 2 PROJECT NO: 0805-01-86750

CLIENT: CANADA LANDS COMPANY UNIWIDE DRILLING - SOLID STEM AUGER ELEVATION: 99.965 m

SAMPLE TYPE  GRAB  NO RECOVERY  SPT  A-CASING  SHELBY TUBE  CORE

BACKFILL TYPE  BENTONITE  PEA GRAVEL  SLOUGH  GROUT  DRILL CUTTINGS  SAND



NOTE: This borehole log has been produced for environmental purposes only.

EBA Engineering Consultants Ltd.  
Kelowna, B.C.

LOGGED BY: CHU  
REVIEWED BY: ALLARD

COMPLETION DEPTH: 3 m  
COMPLETE: 03/19/01