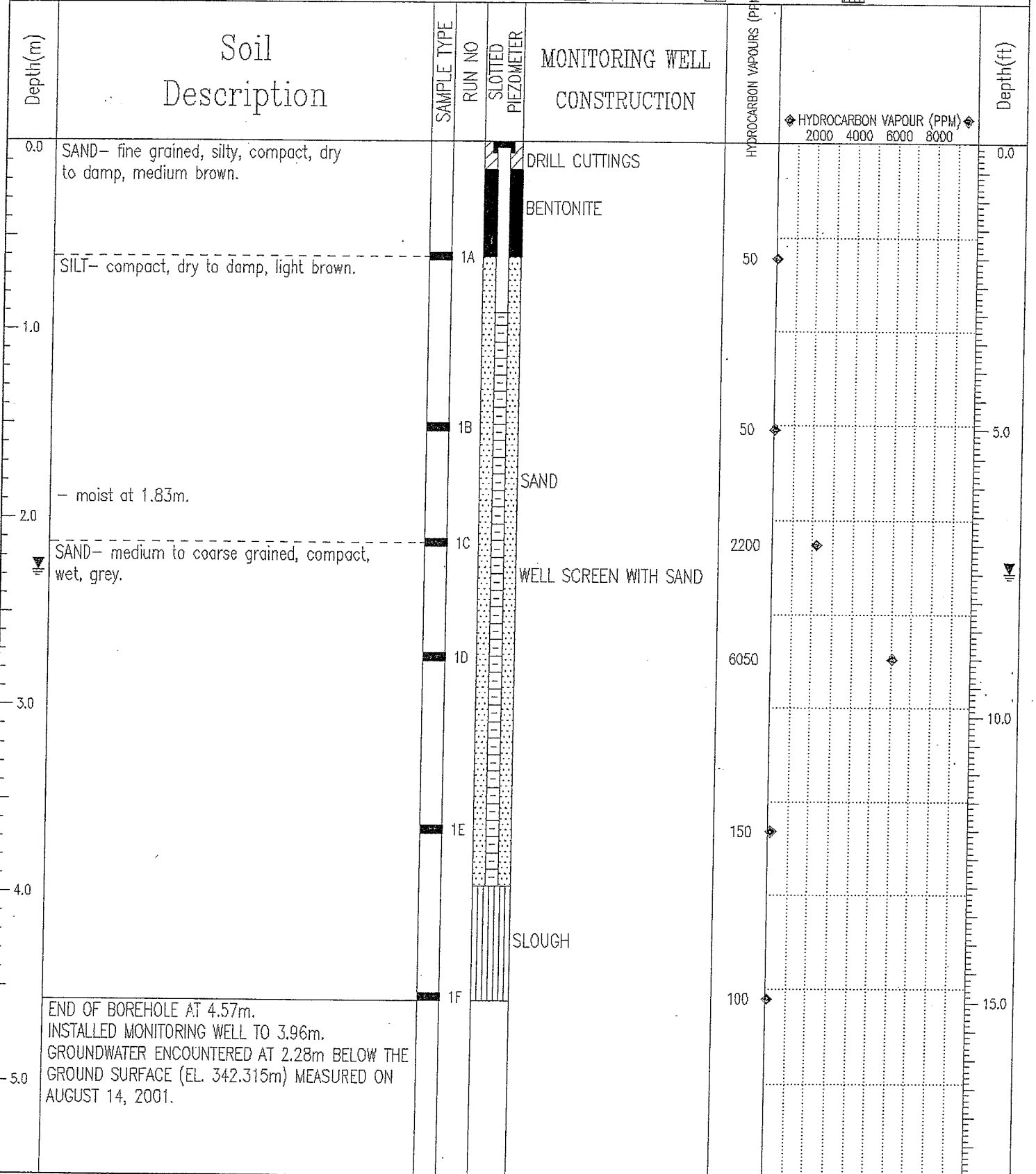


PROJ.: SUPPLEMENTAL DSI - TRAIN STATION	CLIENT: CANADA LANDS COMPANY LTD.	BOREHOLE NO: BH01-1
ADDRESS: 520 CLEMENT AVENUE, KELOWNA, BC	CONTRACTOR: UNIWIDE DRILLING	PROJECT NO: 0805-01-86820
	EQUIPMENT: TRUCK MOUNTED SOLID STEM	ELEVATION: 344.56 m

SAMPLE TYPE  GRAB  SPT SPLIT SPOON

BACKFILL TYPE  BENTONITE  PEA GRAVEL  SLOUGH  GROUT  DRILL CUTTINGS  SAND



EBA Engineering Consultants Ltd.  
 Kelowna, B.C.

LOGGED BY: CHU  
 REVIEWED BY: ALLARD  
 Fig. No: 86820-1

COMPLETION DEPTH: 4.57 m  
 COMPLETE: 07/19/01