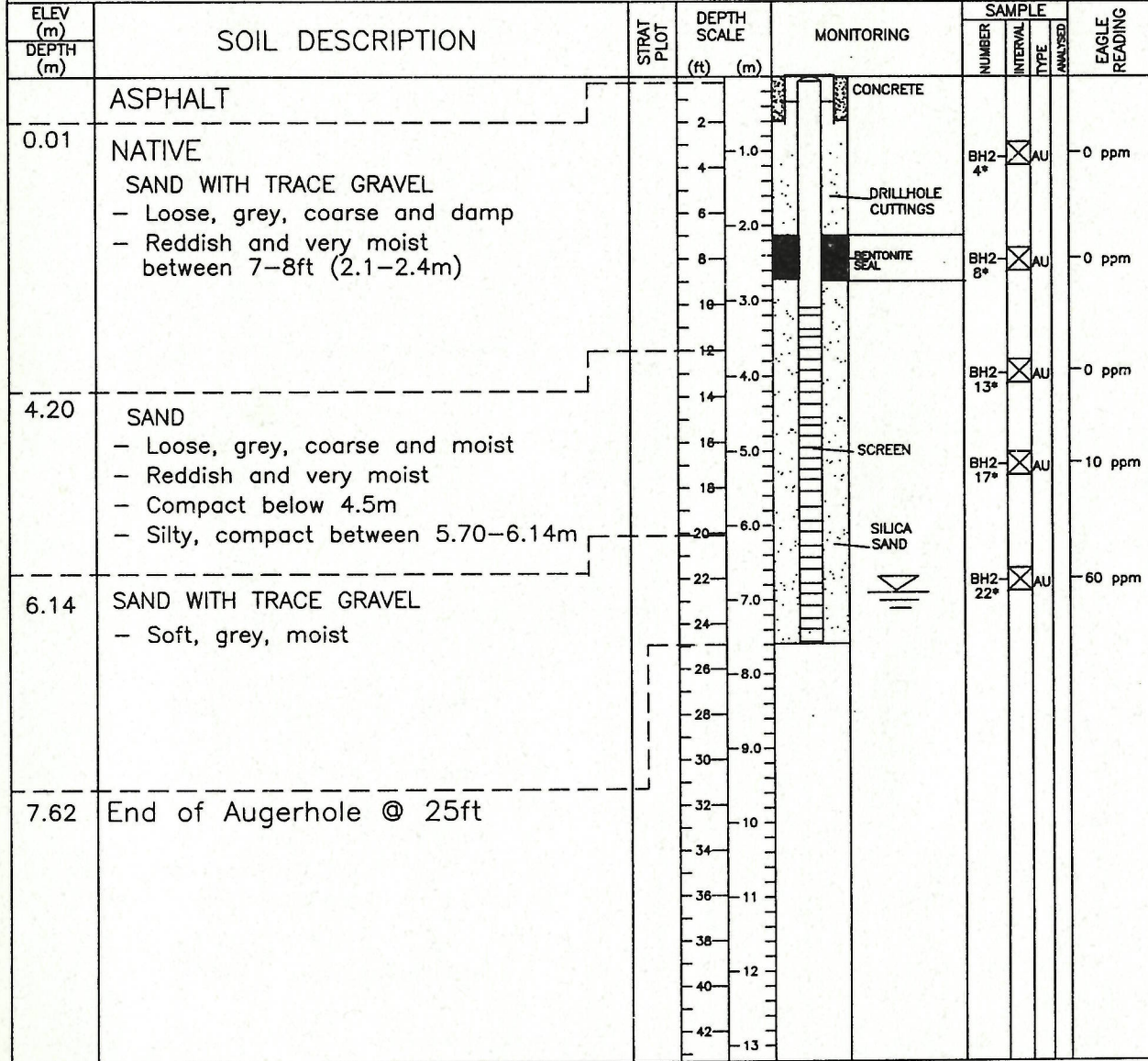


CANASIA Environmental and Engineering Ltd.

CLIENT: <u>CANWEST GROUP</u>	PROJECT No: <u>SJ0002.101</u>	AUGERHOLE MW2				
PROJECT: <u>PHASE 2 ENVIRONMENTAL SITE ASSESSMENT</u>		SHEET 1 OF 1				
AUGERHOLE LOCATION: <u>MW2</u>						
DRILLER: <u>UNIWIDE DRILLING LTD.</u>	DATE DRILLED: <u>FEB 15/00</u>					
DRILLING SUPERVISED BY: <u>D. K. GHOSH</u>						
DRILLING METHOD: <u>SOLID STEM AUGER</u>						
MONITORING WELL DATA		<table border="0" style="width:100%;"> <tr> <td style="width:50%; vertical-align: top;"> WELL SCREEN (WATER LEVEL) ELEV. m. YEAR/MONTH/DAY </td> <td style="width:50%; vertical-align: top;"> SAMPLE TYPE SS - SPLIT SPOON SAMPLE WA - WASH SAMPLE AU - AUGER SAMPLE CN - CONTINUOUS SAMPLER RX - ROCK CORE GS - GRAB SAMPLE* </td> </tr> <tr> <td style="vertical-align: top;"> GAS MONITOR SCREEN (VAPOR READING, YEAR/MONTH/DAY) </td> <td></td> </tr> </table>	WELL SCREEN (WATER LEVEL) ELEV. m. YEAR/MONTH/DAY	SAMPLE TYPE SS - SPLIT SPOON SAMPLE WA - WASH SAMPLE AU - AUGER SAMPLE CN - CONTINUOUS SAMPLER RX - ROCK CORE GS - GRAB SAMPLE*	GAS MONITOR SCREEN (VAPOR READING, YEAR/MONTH/DAY)	
WELL SCREEN (WATER LEVEL) ELEV. m. YEAR/MONTH/DAY	SAMPLE TYPE SS - SPLIT SPOON SAMPLE WA - WASH SAMPLE AU - AUGER SAMPLE CN - CONTINUOUS SAMPLER RX - ROCK CORE GS - GRAB SAMPLE*					
GAS MONITOR SCREEN (VAPOR READING, YEAR/MONTH/DAY)						
- PIPE: <u>2" DIA. PVC</u>						
- SCREEN: <u>10FT. WITH NO. 10 HORIZONTAL SLOTS</u>						
OTHER MONITORS: _____						



PREPARED BY: DKG CHECKED BY: JSB DATE PREPARED: MAR 20/00
NOTE: THIS AUGERHOLE LOG WAS PREPARED FOR HYDROGEOLOGICAL AND/OR ENVIRONMENTAL ASSESSMENT PURPOSES AND DOES NOT NECESSARILY CONTAIN INFORMATION SUITABLE FOR A GEOTECHNICAL ASSESSMENT OF THE SUBSURFACE CONDITIONS. AUGERHOLE DATA REQUIRES INTERPRETATION BY CANASIA ENVIRONMENTAL PERSONNEL BEFORE USE BY OTHERS.