

Client:
Imperial Oil

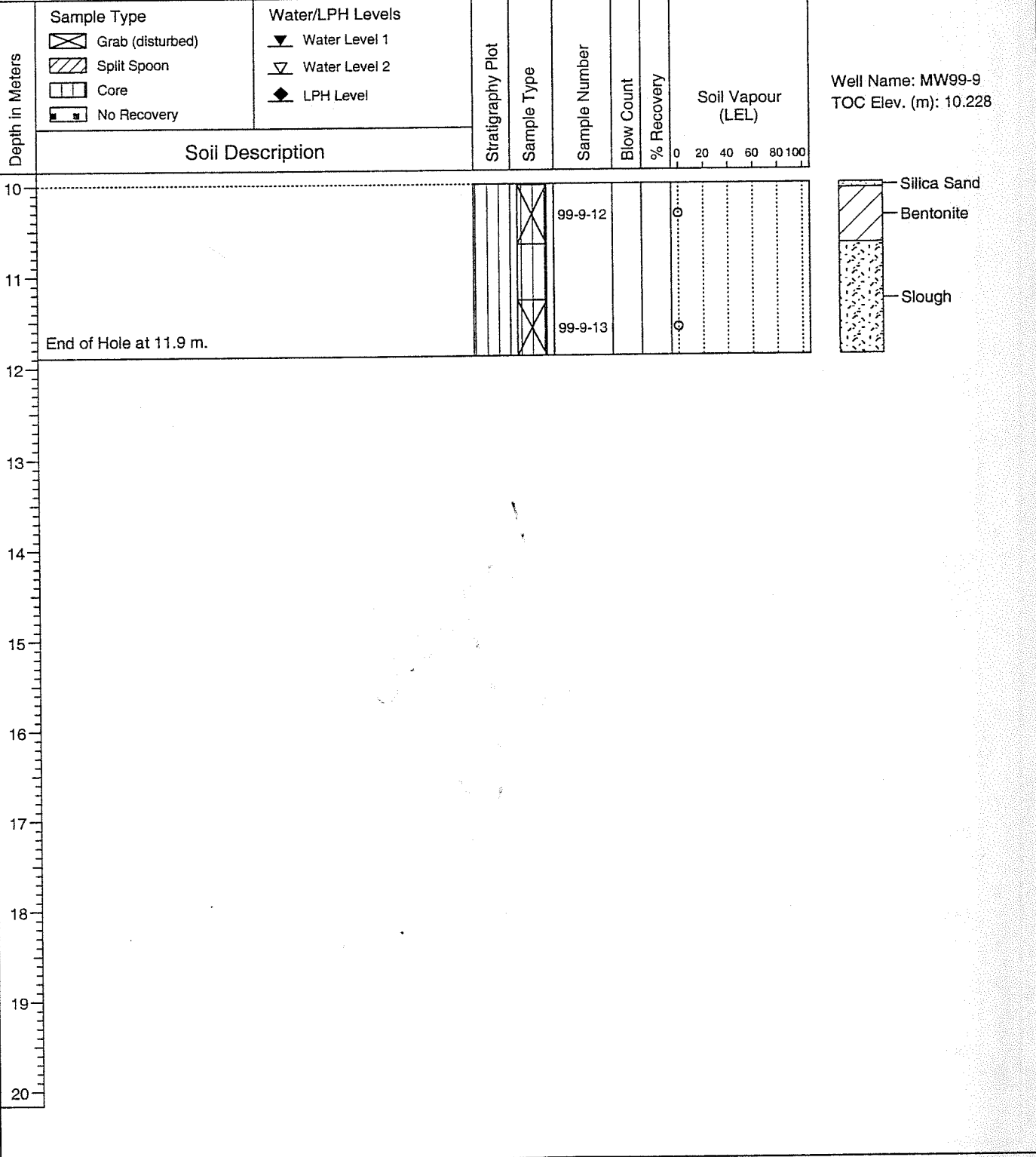
Borehole No.: 99-9

Location: 2735 Douglas Street, Victoria, BC

(Page 2 of 2)

Drilling Contractor : ConeTec Investigations Ltd. Date Water Lev. Meas : 2000 01 11, 2000 07 24
 Drilling Method : Solid Stem (to 5.5m) / Geoprobe Ground Surf. Elev. (m) : 9.561 (L)
 Borehole Diam. (mm) : 150 / 54 Top of Casing Elev. (m) : 10.228 (L)
 Pipe Diam. (mm) : 25.4 (L=local G=geodetic elevation)
 Slotted Pipe Dia. (mm) : 25.4

Project Number : V9-298
 Borehole Logged By : MP
 Date Drilled : 1999 11 26
 Log Typed By : NC



08-23-2000 I:\ATA_SRV\BOREHOLE\99\9298\99298W09.BOR