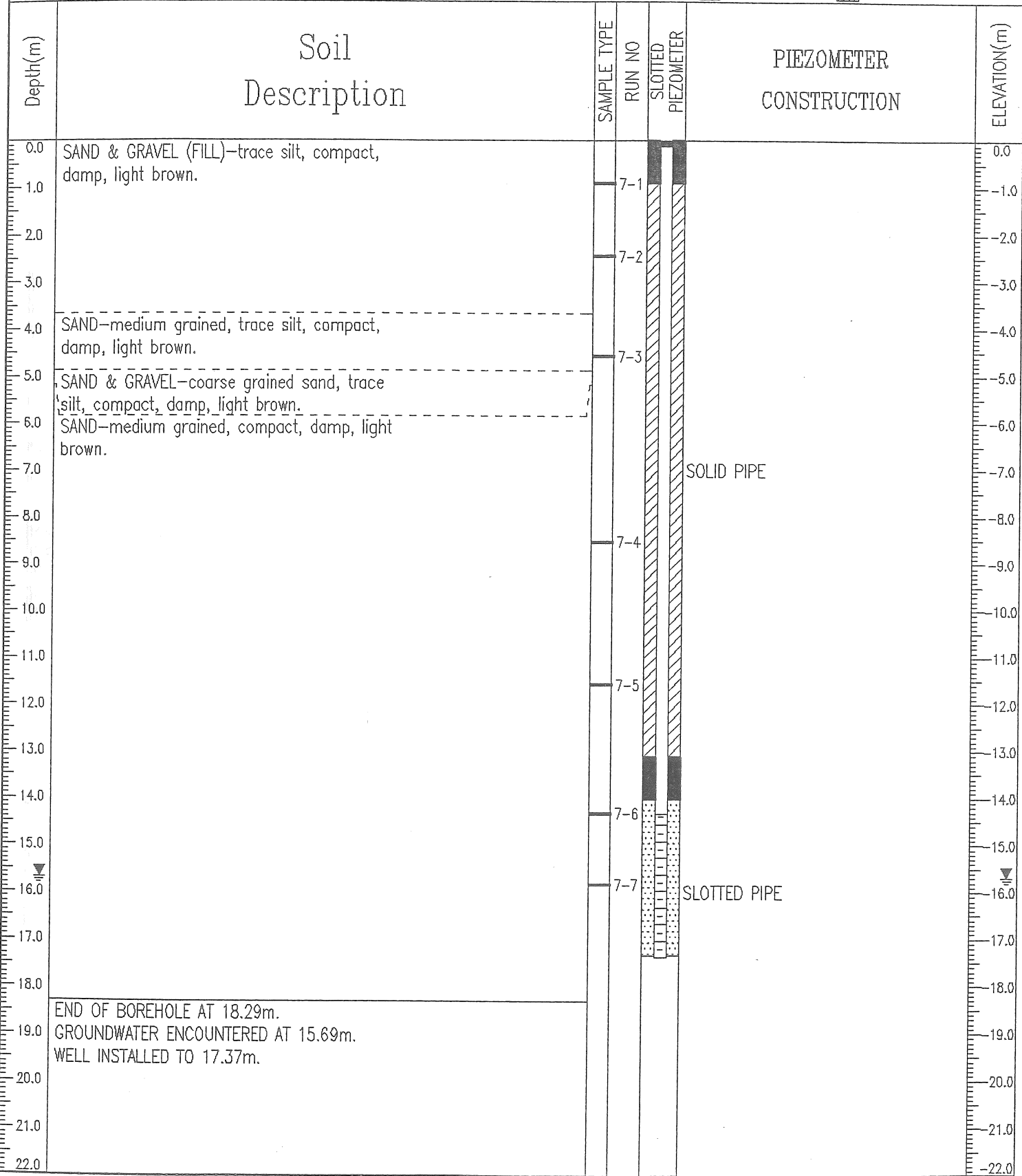


PROJECT: PIER MAC STAGE 2 PSI CLIENT: PIER MAC BOREHOLE NO: BH-007  
 LOCATION: 5520 HWY 97 NORTH CONTRACTOR: UNIWIDE DRILLING PROJECT NO: 0805-99-85058  
 KELOWNA, BC EQUIPMENT: TRUCK MOUNTED HOLLOW STEM ELEVATION:

SAMPLE TYPE  GRAB  SPLIT SPOON  
 BACKFILL TYPE  BENTONITE  PEA GRAVEL  SLOUGH  GROUT  DRILL CUTTINGS  SAND



00/11/10 11:03AM (WELL)