



Client
Shell Canada Products

Borehole No. : BH12-51(5D/6D)

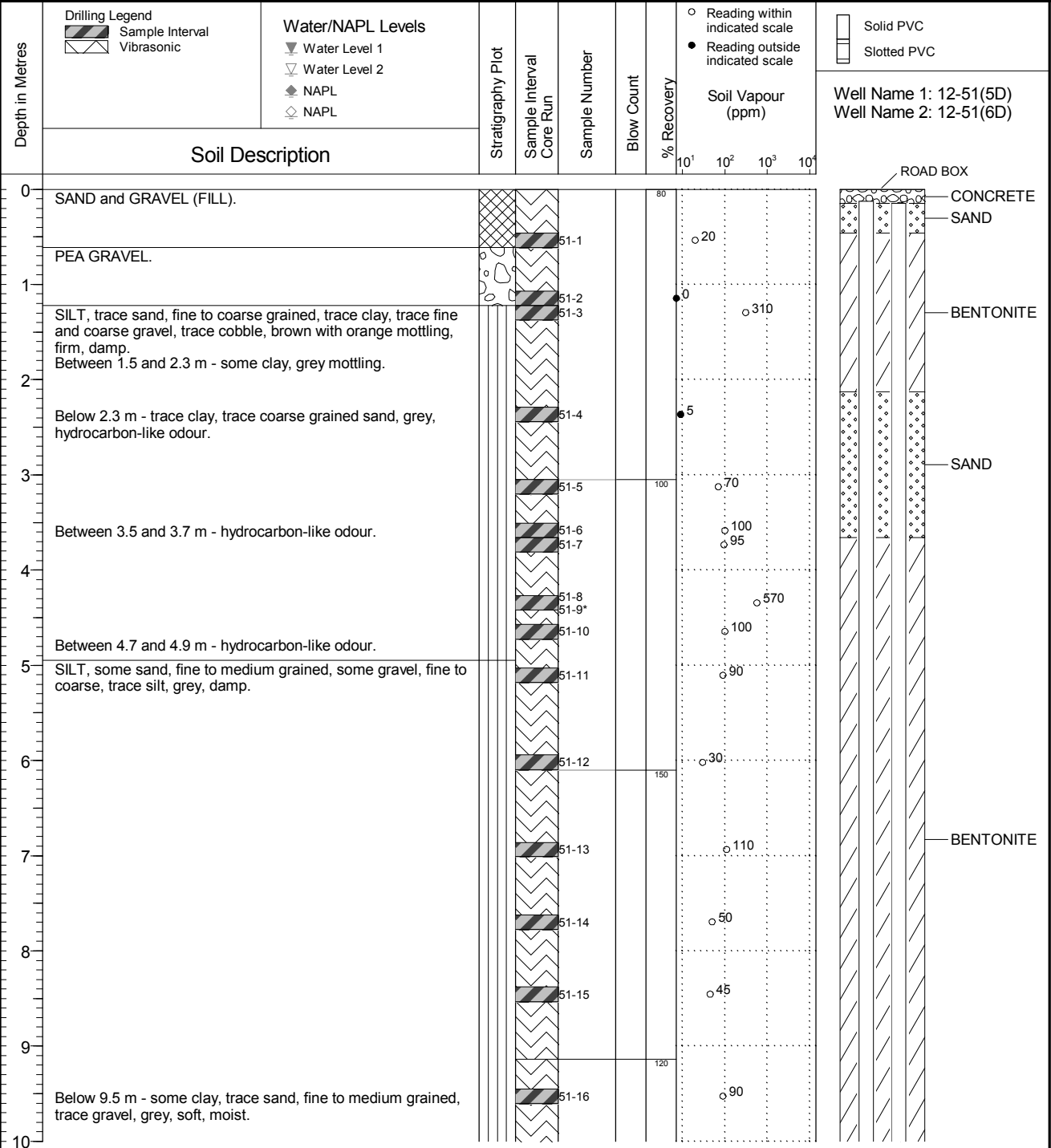
Location
108th & King George Hwy., Surrey, BC

PAGE 1 OF 3

Drilling Contractor: Sonic Drilling Ltd.
Drilling Method: Vibratory Sonic
Borehole Dia. (m): 0.15
Pipe/Slotted Pipe Dia. (m): 0.03/0.03

Date Monitored: n/a
Ground Surface Elev. (m): 83.897
Top of Casing Elev. (m): 83.747, 83.769
Northing: 37043.104
Easting: 47169.756

Project Number: 130915
Borehole Logged By: JWG/MBG
Date Drilled: 2012 04 02
Log Typed By: LJL



NOTES
 Bolded sample denotes sample analyzed.
 * denotes blind field duplicate.
 MW 12-51(5D) is a 1" diameter well.
 MW 12-51(6D) is a 2" diameter well.

Print Date: 2015.10.26 QA1: MBG Date Approved: 2014.09.26

Any use which a third party makes of this document, or any reliance on or decisions to be made based on it, are the responsibility of such third parties. CSAP/MOE are not responsible for any use or modification of this document. CSAP/MOE accept no responsibility for damages, if any, suffered by any third party as a result of decisions made or actions taken based on this document.



Client
Shell Canada Products

Borehole No. : BH12-51(5D/6D)

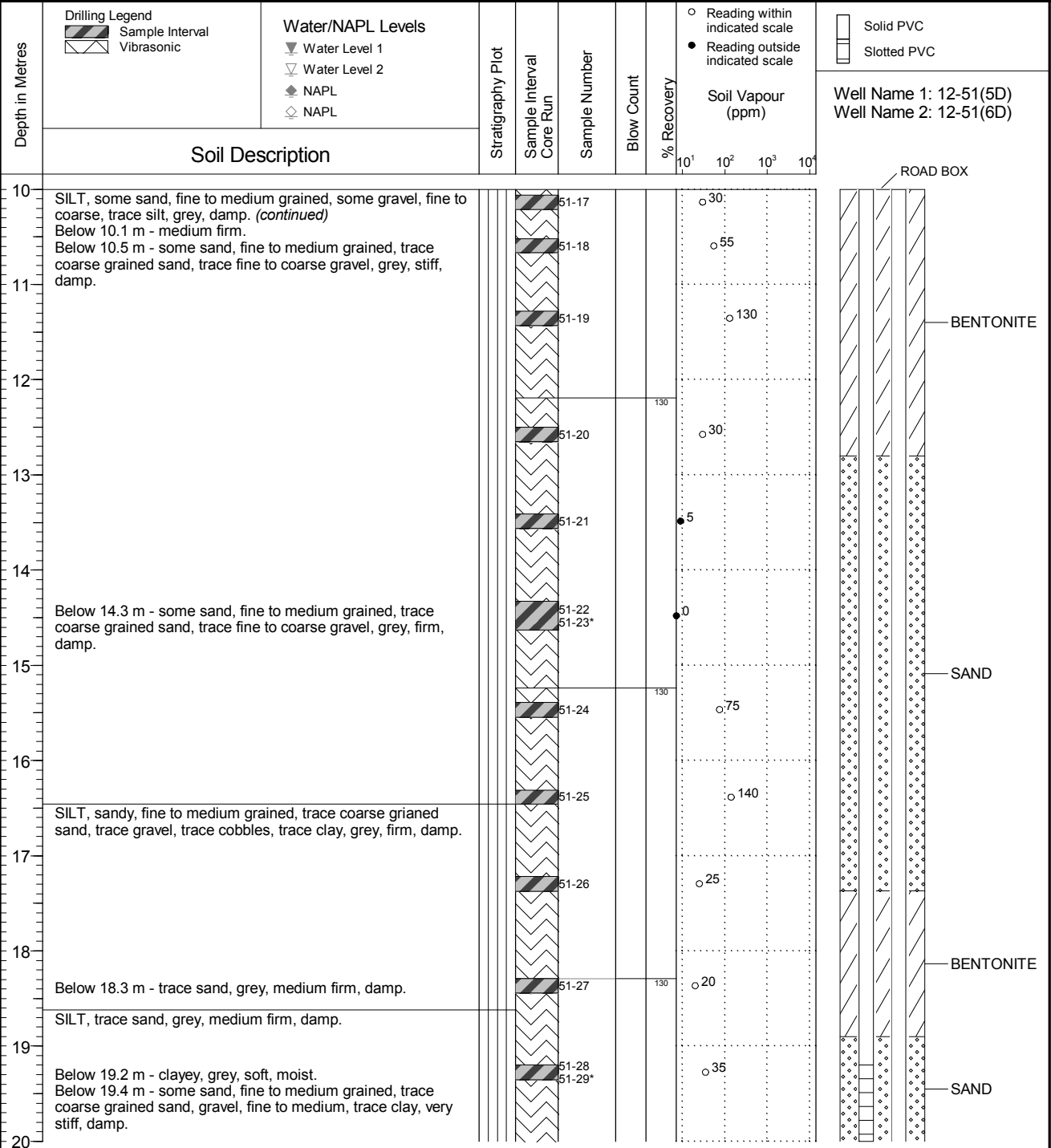
Location
108th & King George Hwy., Surrey, BC

PAGE 2 OF 3

Drilling Contractor: Sonic Drilling Ltd.
Drilling Method: Vibratory Sonic
Borehole Dia. (m): 0.15
Pipe/Slotted Pipe Dia. (m): 0.03/0.03

Date Monitored: n/a
Ground Surface Elev. (m): 83.897
Top of Casing Elev. (m): 83.747, 83.769
Northing: 37043.104
Easting: 47169.756

Project Number: 130915
Borehole Logged By: JWG/MBG
Date Drilled: 2012 04 02
Log Typed By: LJL



NOTES
 Bolded sample denotes sample analyzed.
 * denotes blind field duplicate.
 MW12-51(5D) is a 1" diameter well.
 MW12-51(6D) is a 2" diameter well.

Print Date: 2015.10.26 QA1: MBG Date Approved: 2014.09.26

Any use which a third party makes of this document, or any reliance on or decisions to be made based on it, are the responsibility of such third parties. CSAP/MOE are not responsible for any use or modification of this document. CSAP/MOE accept no responsibility for damages, if any, suffered by any third party as a result of decisions made or actions taken based on this document.



Client
Shell Canada Products

Borehole No. : BH12-51(5D/6D)

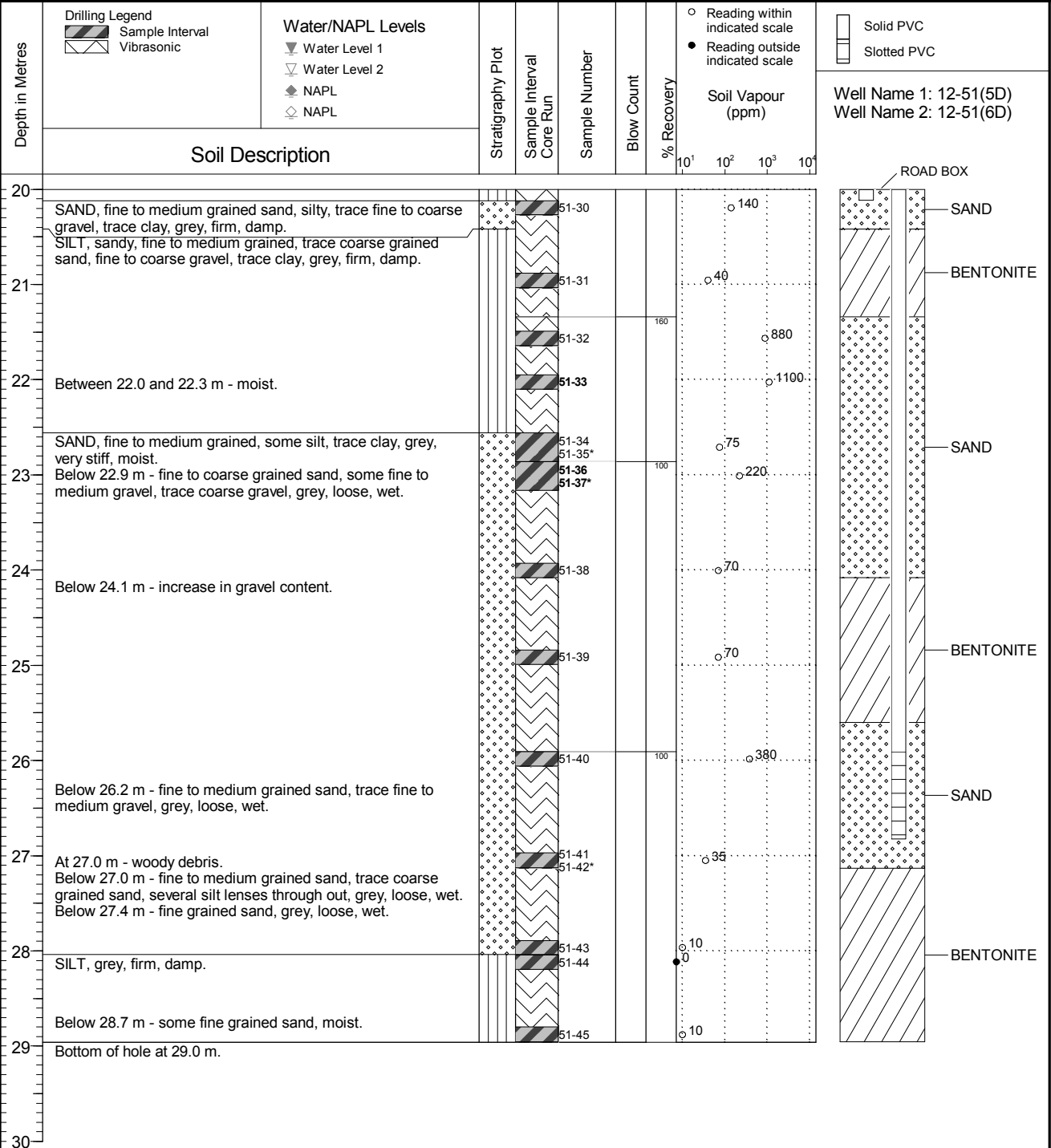
Location
108th & King George Hwy., Surrey, BC

PAGE 3 OF 3

Drilling Contractor Sonic Drilling Ltd.
Drilling Method Vibratory Sonic
Borehole Dia. (m) 0.15
Pipe/Slotted Pipe Dia. (m) 0.03/0.03

Date Monitored n/a
Ground Surface Elev. (m) 83.897
Top of Casing Elev. (m) 83.747, 83.769
Northing: 37043.104 Easting: 47169.756

Project Number: 130915
Borehole Logged By: JWG/MBG
Date Drilled: 2012 04 02
Log Typed By: LJL



NOTES
 Bolded sample denotes sample analyzed.
 * denotes blind field duplicate.
 MW 12-51(5D) is a 1" diameter well.
 MW 12-51(6D) is a 2" diameter well.

Print Date: 2015.10.26 QA1: MBG Date Approved: 2014.09.26

Any use which a third party makes of this document, or any reliance on or decisions to be made based on it, are the responsibility of such third parties. CSAP/MOE are not responsible for any use or modification of this document. CSAP/MOE accept no responsibility for damages, if any, suffered by any third party as a result of decisions made or actions taken based on this document.