

Borehole Log: MW2

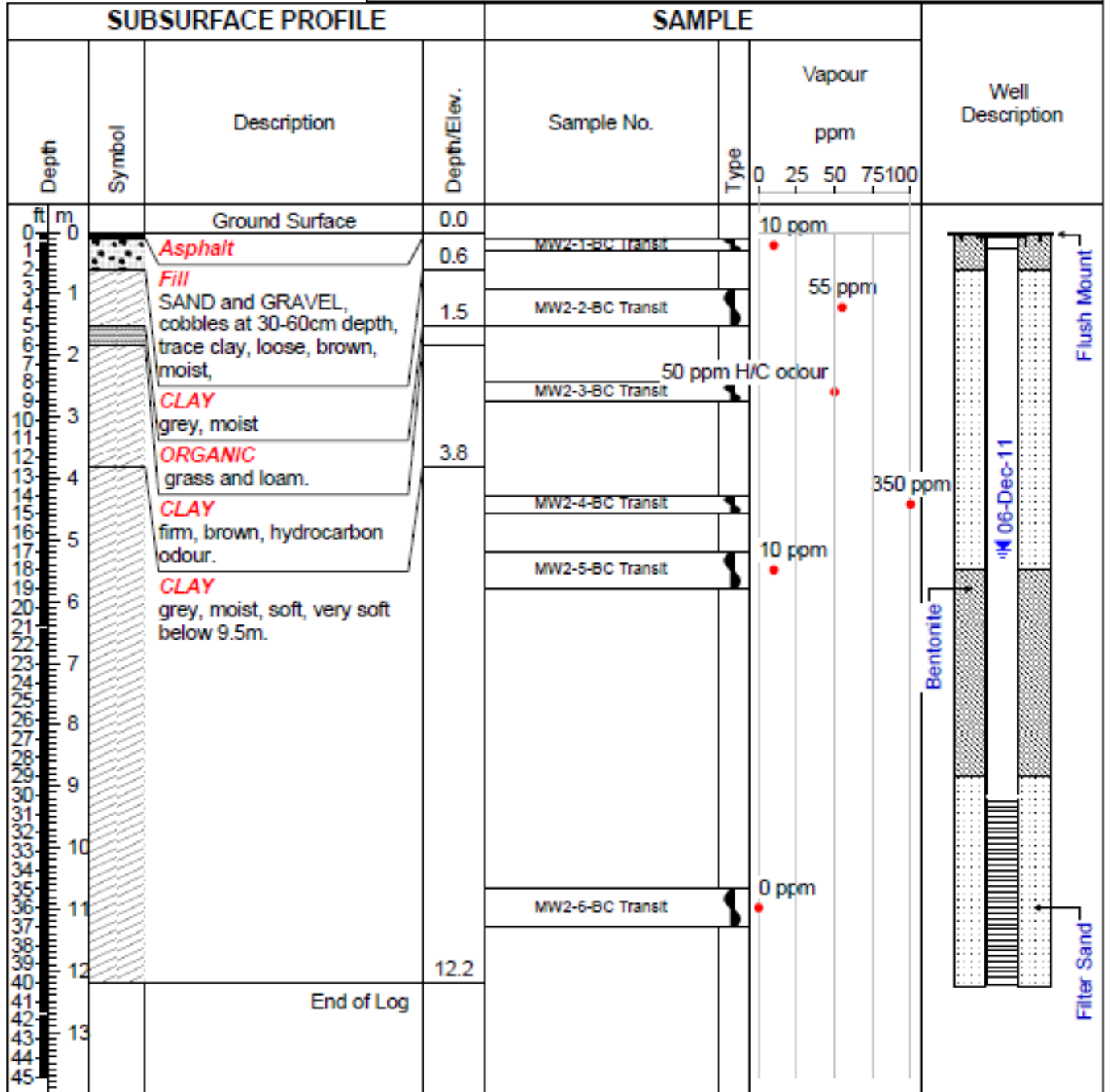
Project No.: 2194-1102

Project: Stage II PSI

Client: BC Transit

520 Gorge Road East, Victoria BC

Logged By: DJ



Drilled By: Blue Max Environmental Drilling Inc.

Well Dia: 2" / 5 cm

Drill Method: Solid Auger Hollow Stem

Hole Dia: 6" / 15 cm

Drill Date: December 01, 2011

All soil observations made on disturbed soil.

Sheet: 1 of 1

**Groundwater Field Conditions
BC Transit Stage 2 Preliminary Site Investigation**

Sample ID	Depth to Bottom (m b TOC)	Depth to Water (m b TOC)	Temperature (°C)	pH	Conductivity (uS)	Date
MW-1	9.192	7.217	11.9	7.93	1060	06-Dec-11
MW-2	12.168	5.148	8.6	7.81	1176	06-Dec-11
MW-3	3.132	1.350	11.5	6.86	1398	06-Dec-11
MW-4	6.072	1.791	11.9	6.93	1181	06-Dec-11
MW-5	2.534	1.006	8.9	6.85	1105	06-Dec-11
MW-6	4.538	1.438	12.8	6.9	1624.0	06-Dec-11
MW-7	2.089	1.930	IVW	IVW	IVW	06-Dec-11
MW-8	3.852	3.253	10.6	6.73	1286	06-Dec-11
MW-9	10.615	0.87	11.4	7.72	934	06-Dec-11

Notes:

IVW - insufficient volume of water for parameter measurement
m b TOC - metres below top of casing
uS - micro semens