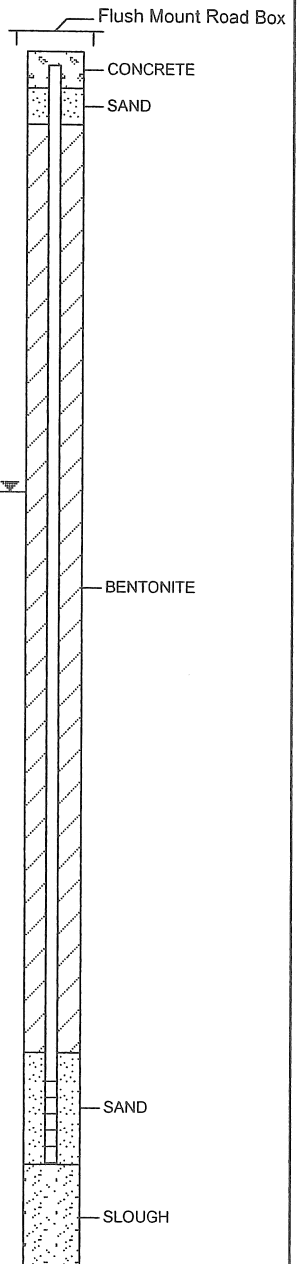


Drilling Contractor: Sonic Drilling Ltd.
 Drilling Method : Vibratory Sonic
 Borehole Dia. (m) : 0.18
 Pipe/Slotted Pipe Dia. (m) : 0.05, 0.05

Date Water Lev. Meas. : 2003 12 22
 Ground Surf Elev. (m) : 10.88
 Top of Casing Elev. (m) : 10.779

Project Number : V033185
 Borehole Logged By : DWB
 Date Drilled : 2003 10 23
 Log Typed By : PKR

Depth in Metres	Drilling Legend	Water/LPH Levels	Soil Description	Straigraphy Plot	Sample Interval/ Core Run	Sample Number	Blow Count	% Recovery	Soil Vapour (ppm)	Well Name 1 : 03-14C
	[Hatched] Sample Interval [Diagonal] Vibrasonic [Dotted] Vac. Extraction	[Triangle] Water Level 1 [Inverted Triangle] Water Level 2 [Diamond] LPH Level 1 [Circle] LPH Level 2								
0	ASPHALT SAND (FILL), well graded, some gravel to gravelly, grey-brown, loose, damp, pockets of black soil (asphalt).									
1										
2	Below 2.0 m - becomes dark grey to black, oily, heavy oil-like odour. AT 2.5 m - woody debris and rootlets, black oily substance ponding on silt layer.									
3	SILT, some sand to sandy, fine grained, brown, soft to firm, moist. SAND, very fine grained, some silt to silty, brown, loose, moist, strong hydrocarbon-like odour. From 2.9 to 2.95 m - becomes silty sand.									
4	SILT, some sand to sandy, very fine grained, olive-grey to brown, soft, wet, strong hydrocarbon-like odour, laminated. SAND, fine to medium grained, trace gravel, trace silt, grey-brown, moist to wet, strong hydrocarbon-like odour. SAND and GRAVEL, coarse grained sand, well graded gravel, some cobbles, grey, loose, saturated.									
5	At 5.0 m - becomes grey coloured, slight hydrocarbon-like odour. Below 5.5 m - light grey coloured drill water, some fine to medium grained sand and silt (increased fines).									
6	Below 6.1 m - trace fine to medium sand and silt (clean gravel).									
7										
8	SAND, fine grained, some silt to silty, grey, loose, saturated, thin layer of decomposing organic matter (orange gel-like matter). SAND and GRAVEL, well graded, grey, loose, saturated.									
9	SAND, very fine grained, silty, grey to olive grey, medium dense, wet. At 8.75 m - thin layer (<5 cm) of organic (peat, woody debris, rootlets), black, soft. SAND, medium grained, trace to some fine grained sand, trace silt, trace gravel, grey-brown, loose, saturated. At 9.6 m - thin layer (approx. 5 cm) of sand and gravel.									
10	...Continued									



Notes:
 Bolded sample denotes sample analyzed.



Client :
Canadian Pacific Railway

Borehole No. : 03-14C

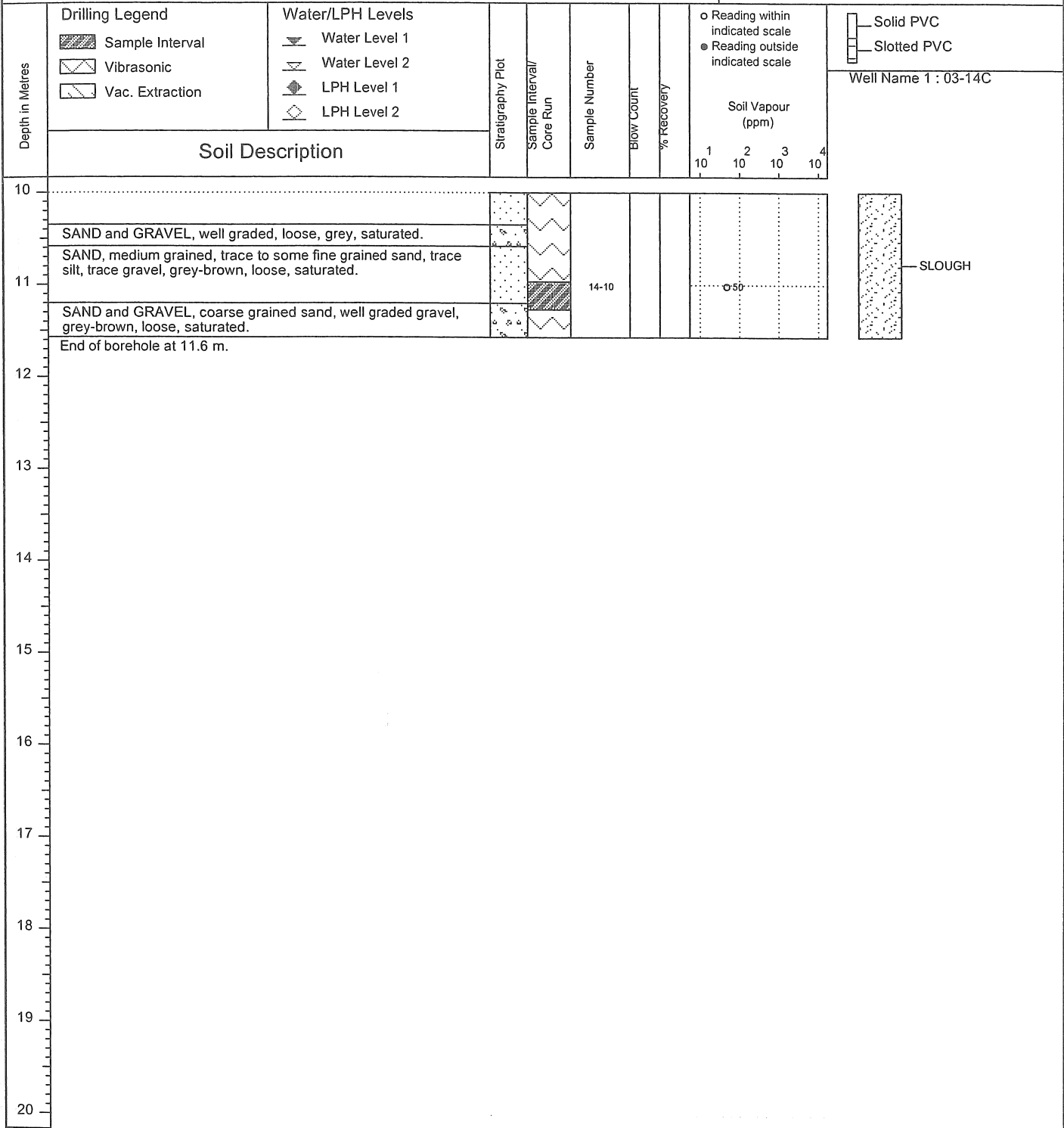
Location :
Port Coquitlam Yard West

(Page 2 of 2)

Drilling Contractor: Sonic Drilling Ltd.
Drilling Method : Vibratory Sonic
Borehole Dia. (m) : 0.18
Pipe/Slotted Pipe Dia. (m): 0.05, 0.05

Date Water Lev. Meas. : 2003 12 22
Ground Surf Elev. (m) : 10.88
Top of Casing Elev. (m) : 10.779

Project Number : V033185
Borehole Logged By : DWB
Date Drilled : 2003 10 23
Log Typed By : PKR



Notes:
Bolded sample denotes sample analyzed.