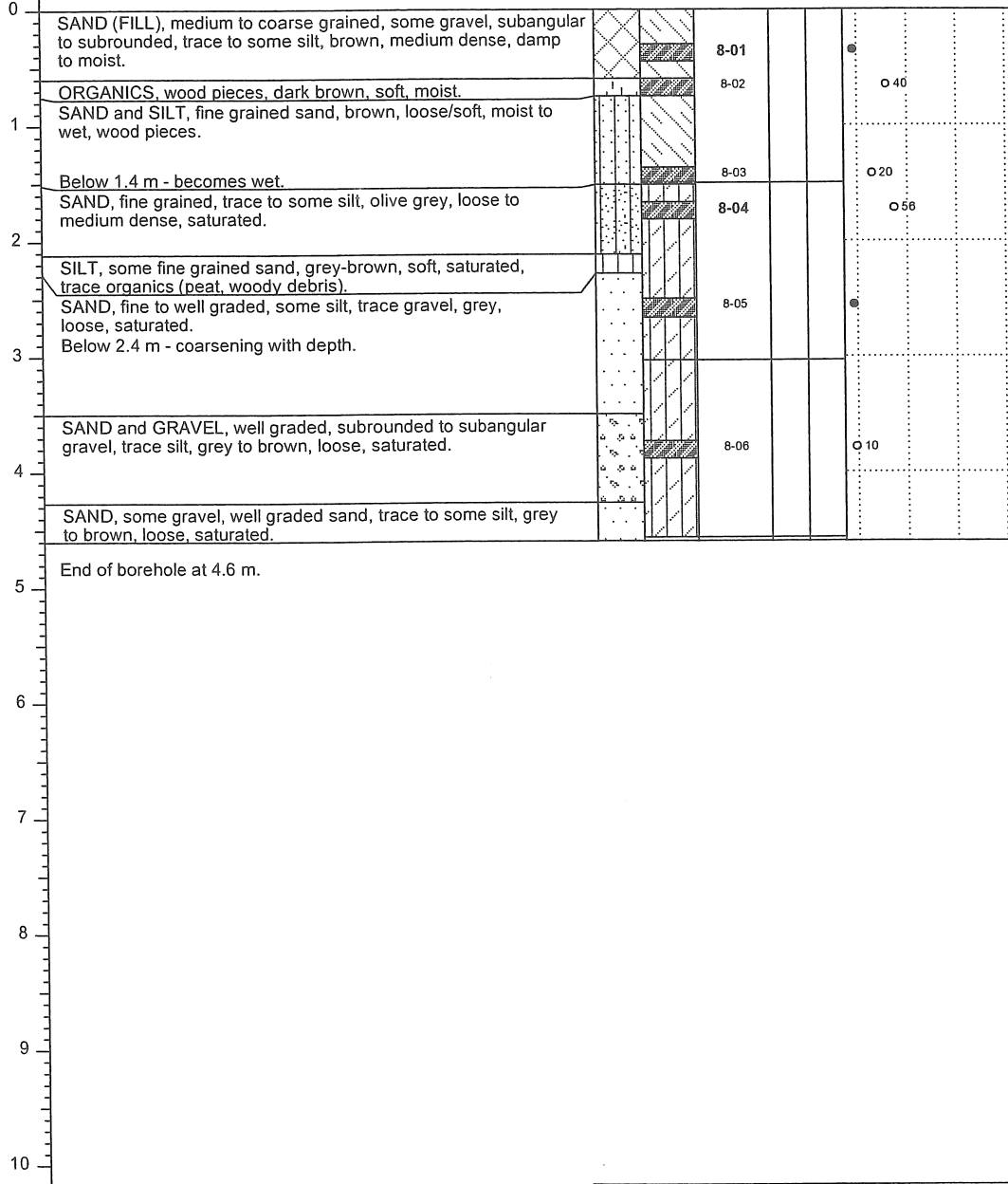


Drilling Contractor: Uniwide Drilling Co. Ltd.
 Drilling Method : Solid Stem Auger
 Borehole Dia. (m) : 0.15

Ground Surf Elev. (m) : 7.985

Project Number : V1611
 Borehole Logged By : EW
 Date Drilled : 2001 12 03
 Log Typed By : SRT

Depth in Metres	Drilling Legend	Water/LPH Levels	Stratigraphy Plot	Sample Interval/ Core Run	Sample Number	Blow Count	% Recovery	○ Reading within indicated scale
	■ Sample Interval ▨ Auger Flyte ▩ Vac. Extraction	▽ Water Level 1 ▾ Water Level 2 ◆ LPH Level 1 ◇ LPH Level 2						● Reading outside indicated scale
Soil Description							Soil Vapour (ppm)	
							1 2 3 4 10 10 10 10	



Notes:
 Bolded sample denotes sample analyzed.
 Vacuum extraction to 1.5 m.
 No monitoring well installed.