

Drilling Contractor: Mud Bay Drilling Co. Ltd.
Drilling Method : Vibratory Sonic
Borehole Dia. (m) : 0.15
Pipe/Slotted Pipe Dia. (m): 0.05, 0.05

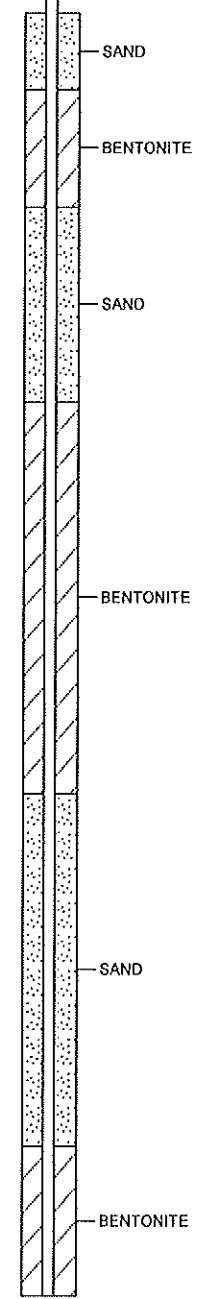
Date Monitored : 2011 07 25
Ground Surf Elev. (m) : 84.325
Top of Casing Elev. (m) : 84.622
Northing: 70451 Easting: 44801

Project Number :130329
Borehole Logged By :JJJ
Date Drilled :2011 06 27
Log Typed By :SGP

Depth in Metres	Drilling Legend Sample Interval Vibrasonic	Water/NAPL Levels Water Level 1 Water Level 2 NAPL NAPL	Stratigraphy Plot	Sample Interval/ Core Run	Sample Number	Blew Count	% Recovery				Soil Vapour (ppm)	Well Name: 11-1	
							1	2	3	4			
0	SAND (FILL), fine to medium grained, trace rootlets, light brown.												
0.5	SILT (FILL), some fine grained sand, trace medium to coarse grained sand, trace clay, trace reddish-brown inclusions, grey-brown.												
1	SAND (FILL), fine to coarse grained, some fine to coarse subrounded gravel, trace silt, grey-brown, moist.												
2	SAND (FILL), fine grained, some medium grained sand, some silt, grey-brown, moist.												
3	SAND (FILL), coarse grained, gravelly, fine to coarse subrounded gravel, trace medium grained sand, grey-brown, wet.												
4	SAND and SILT (TILL), fine grained sand, trace fine to coarse angular gravel, grey-brown.				1-1					125			
5	Below 5.2 m - some fine to coarse subrounded gravel, some cobbles, medium dense.				1-2					300			
6	SILT (TILL), some fine grained sand, fine to coarse subangular gravel, trace 8 to 10 cm diameter cobbles, subrounded to subangular. Between 6.0 - 8.0 m - larger cobbles.				1-3 1-4 1-5*								
7					1-6					300			
8	At 8.0 m - 5 cm fine grained sand inclusion. Below 8.1 m, trace fine rounded gravel, trace coarse grained sand, trace clay, low plasticity.				1-7					75			
9	SILT (TILL), some clay, trace fine grained sand, grey-brown, very dense. Below 8.8 m - some subrounded cobbles, dark brown, moist.				1-8					1100			
10	Below 9.5 m - trace subrounded cobbles, some fine to coarse subangular gravel, moist.				1-9					770			

○ Reading within indicated scale
● Reading outside indicated scale

Stick Up



Print Date: 2014 11 25, Date Approved: 2014 05 20

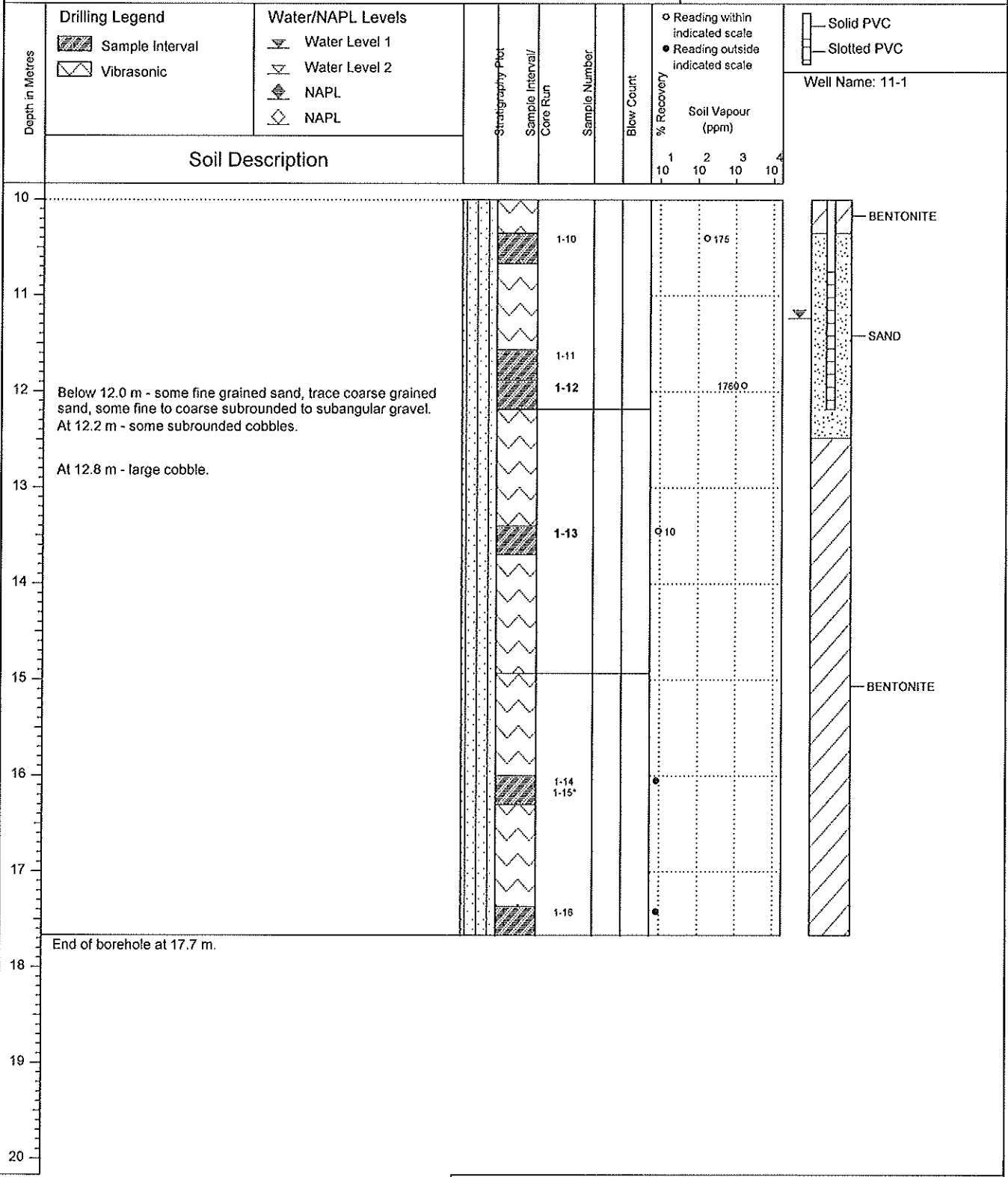
...Continued

Notes:
Bolded sample denotes sample analyzed.
*** denotes blind field duplicate.**
 Any use which a third party makes of this document, or any reliance on or decisions to be made based on it, are the responsibility of such third parties. Suncor Energy Products Partnership/SNC-Lavalin Inc./CSAP/MOE are not responsible for any use or modification of this document. Suncor Energy Products Partnership/SNC-Lavalin/CSAP/MOE accept no responsibility for damages, if any, suffered by any third party as a result of decisions made or actions taken based on this document.

Drilling Contractor: Mud Bay Drilling Co. Ltd.
Drilling Method : Vibratory Sonic
Borehole Dia. (m) : 0.15
Pipe/Slotted Pipe Dia. (m): 0.05, 0.05

Date Monitored : 2011 07 25
Ground Surf Elev. (m) : 84.325
Top of Casing Elev. (m) : 84.622
Northing: 70451 Easting: 44801

Project Number :130329
Borehole Logged By :JJJ
Date Drilled :2011 06 27
Log Typed By :SGP



Print Date: 2014 11 25, Date Approved: 2014 05 20

Notes:
Bolded sample denotes sample analyzed.
*** denotes blind field duplicate.**
 Any use which a third party makes of this document, or any reliance on or decisions to be made based on it, are the responsibility of such third parties. Suncor Energy Products Partnership/SNC-Lavalin Inc./CSAP/MOE are not responsible for any use or modification of this document. Suncor Energy Products Partnership/SNC-Lavalin/CSAP/MOE accept no responsibility for damages, if any, suffered by any third party as a result of decisions made or actions taken based on this document.