



MORROW ENVIRONMENTAL CONSULTANTS INC.

Client:
Shell Canada Products Limited

Location: 3502-27th Avenue, Vernon, BC

Borehole No.: 99-14

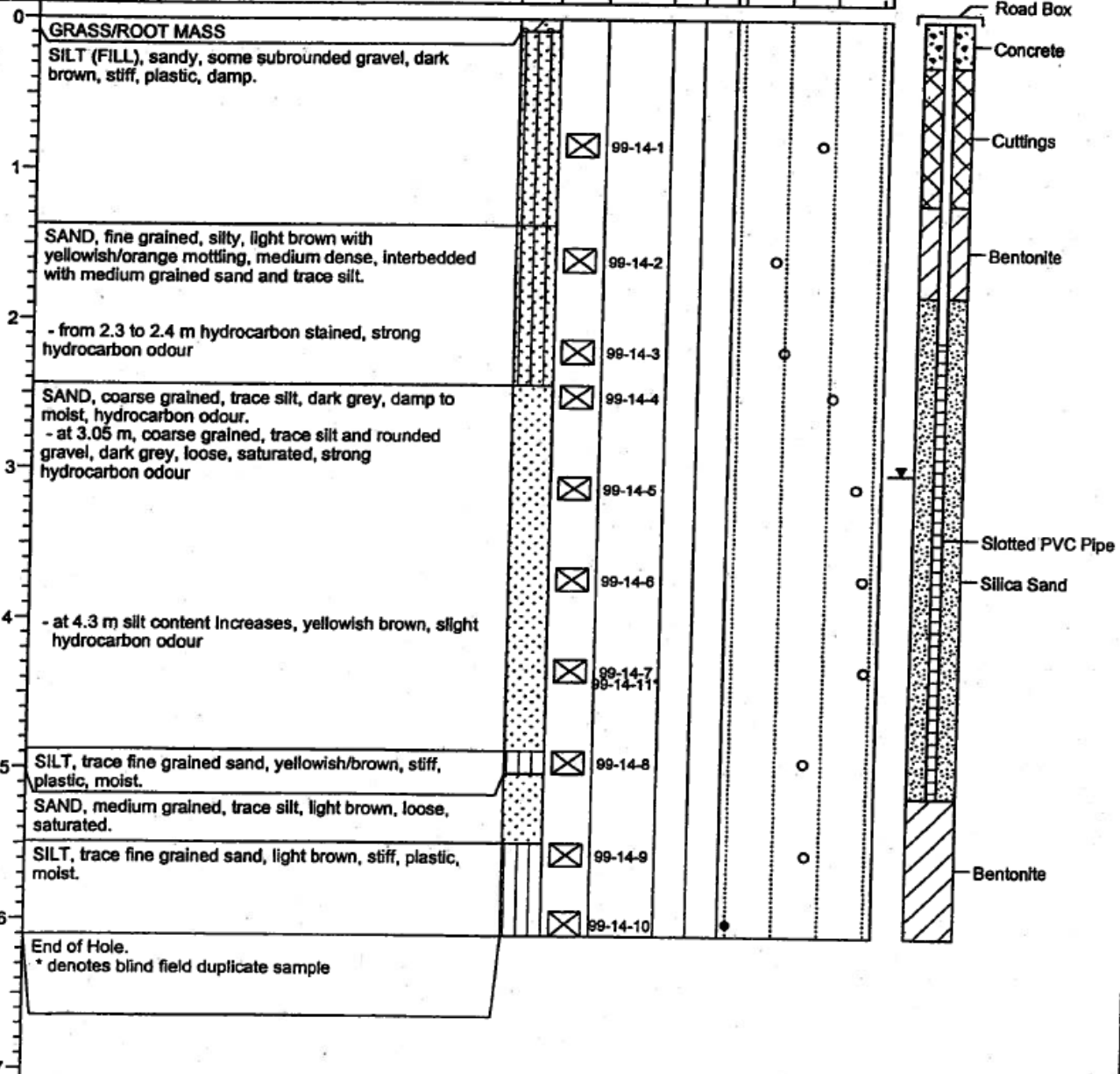
(Page 1 of 1)

Drilling Contractor : Beck Drilling
 Drilling Method : Solid Stem / Hollow Stem
 Borehole Diam. (mm) : 150 / 200
 Ground Surf. Elev. (m) : 370.166 (G)
 (L=local G=geodetic elevation)

Date Water Lev. Meas : 1999 10 14

Project Number : V5-198
 Borehole Logged By : DLS
 Date Drilled : 1999 09 21
 Log Typed By : PA

Depth in Meters	Sample Type	Water/LPH Levels	Stratigraphy Plot	Sample Type	Sample Number	Blow Count	% Recovery	Soil Vapour (ppm)	Well Name: MW 99-14 TOC Elev. (m): 370.063
	☒ Grab (disturbed) ▨ Split Spoon ▭ Core ▩ No Recovery	▼ Water Level 1 ▽ Water Level 2 ◆ LPH Level							
Soil Description									



01-20-2000 P:\V5\198\99DRIL-1\LOGS\V5\198W14.BOR