

Project Name: DSI

MONITORING WELLMW14-5S & D

Project Number: 00168

Location: 4450 & 4451 Still Creek Drive, Burnaby, British Columbia

Coordinates

Northing: 499664.94

Easting: 54588663.13

Datum: 17.08

Drilling Details

Drill Contractor: **Blue Max Environmental**
 Drill Date: **August 28, 2014**
 Drill Method: **Solid Stem Auger**
 Depth of Drilled Hole (mbgs): **12.88**
 Drillhole Diameter (inch): **6"**

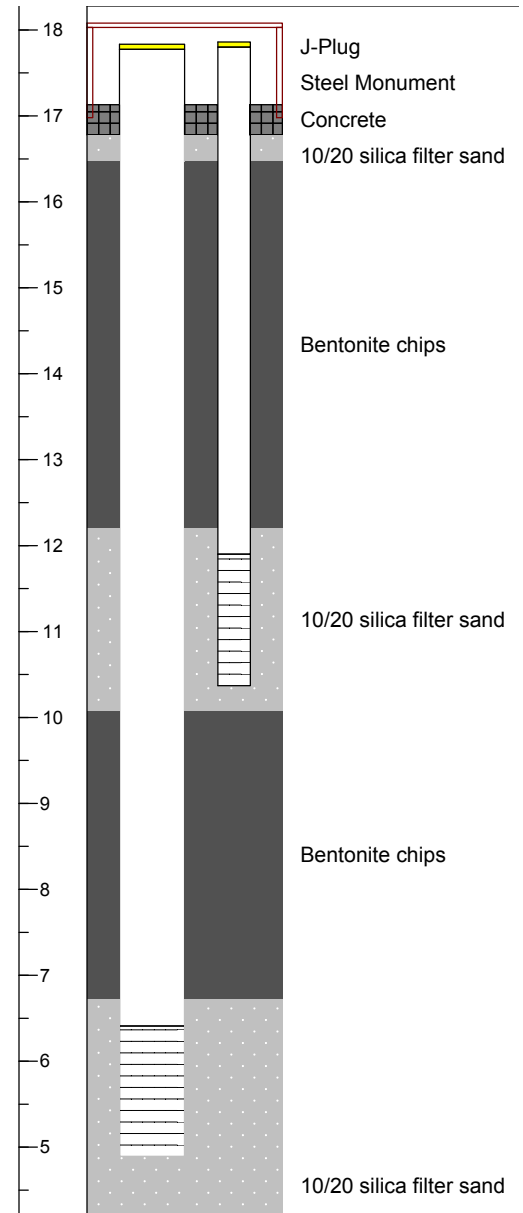
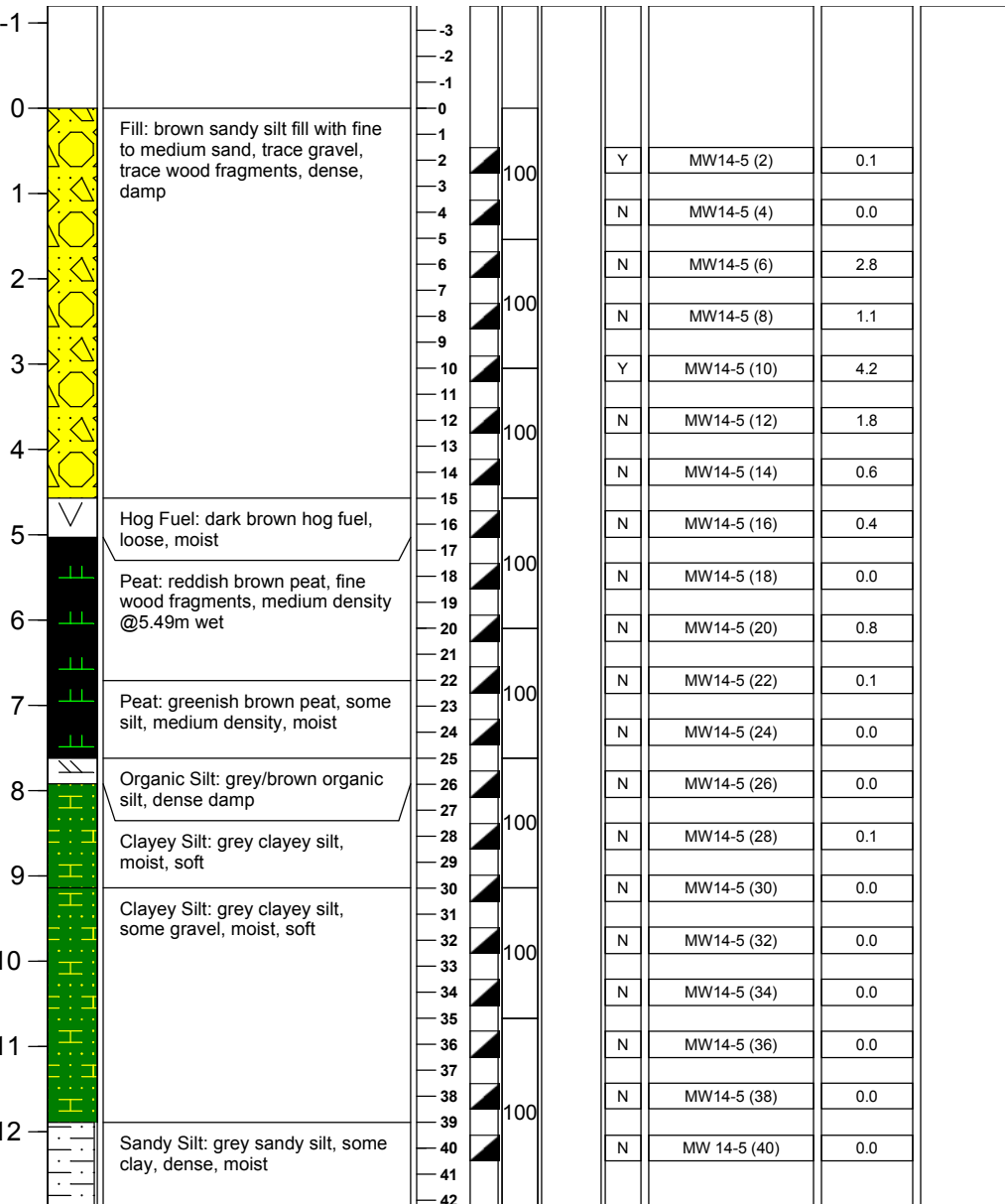
Well Installation Details

Final depth of shallow well (mbgs): **6.855**
 Final depth of deep well (mbgs): **12.080**
 Well Casing Material: **PVC**
 Well Screen Slot Size: **10 slot**
 Well Casing Diameter (inch): **2" (deep); 1" (shallow)**

Any use which a third party makes of this document, or any reliance on or decisions to be made based on it, are the responsibility of such third parties. CSAP/MOE are not responsible for any use or modification of this document. CSAP/MOE accept no responsibility for damages, if any, suffered by any third party as a result of decisions made or actions taken based on this document.

Well Construction Details

Depth (mbgs) Symbol	Lithologic Description	Depth (ftbgs)	Sample Type	% Recovery	Blow Count	Sample Analyzed (Y/N)	Sample ID	Headspace Analysis		Elevation (masl)	MW14-5D (2")	MW14-5S (1")	Construction Comments
								PPM	% LEL				



Report Date:

Logged by: **AG**

Approved by: **TH**

Client: **Cape Development**

Shallow Well Measurements

Depth to Water from TOC (m):

Depth to Bottom from TOC (m):

Well Elevation from TOC (masl):

Ground Elevation (masl):

Date Measured: **September 10, 2014**

Deep Well Measurements

Depth to Water from TOC (m): **8.668**

Depth to Bottom from TOC (m):

Well Elevation from TOC (masl): **17.88**

Ground Elevation (masl): **17.08**

Date Measured: **September 10, 2014** Page 1 of 1