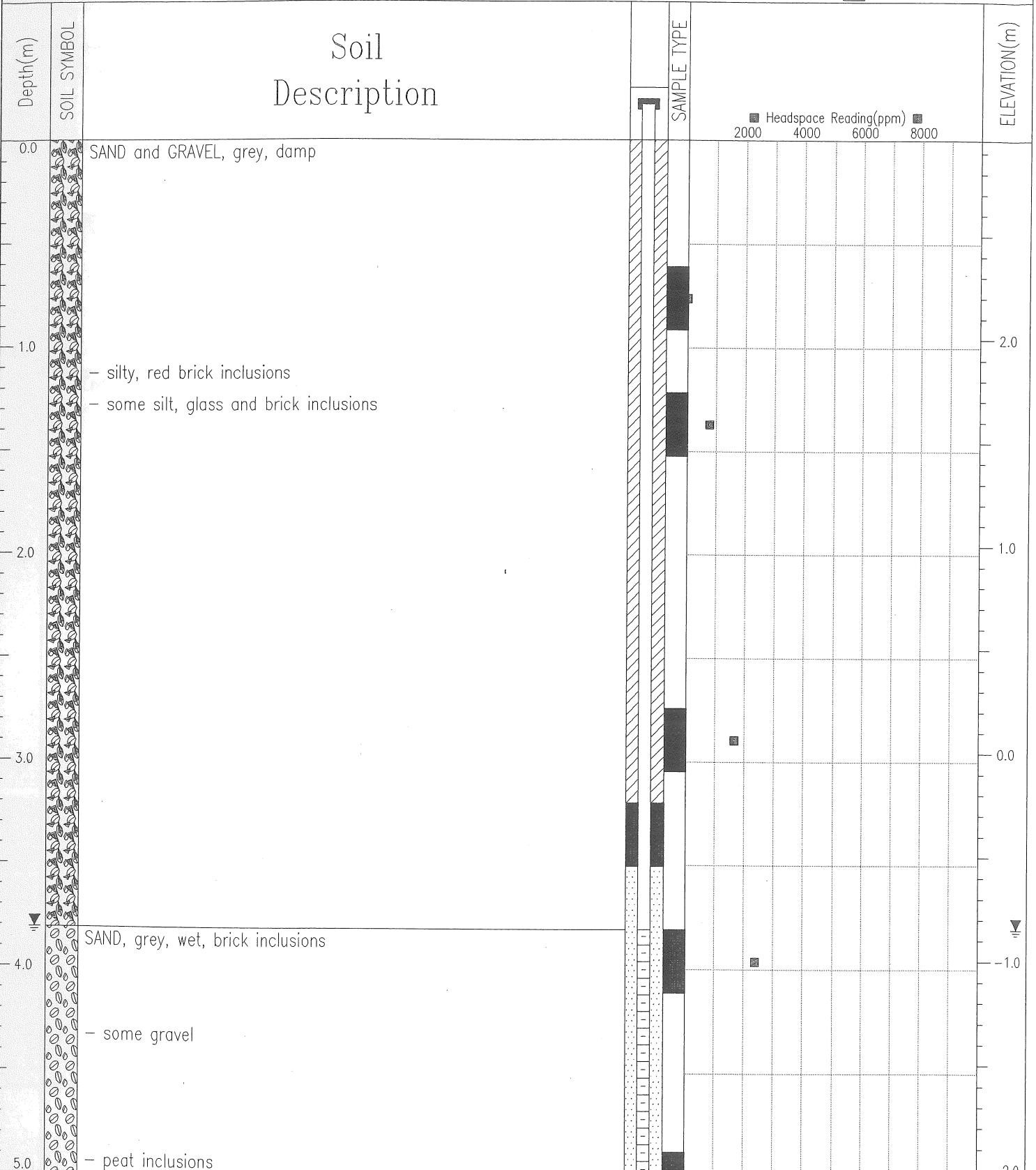


Preliminary Site Investigation	Driller: Uniwide Drilling Co. Ltd.	BOREHOLE NO: EBA04-5
Buckingham Industries Ltd.	Method: Solid Stem / Hollow Stem Auger	PROJECT NO: 5825226.002
Location: 9150 - 9236 River Road, Delta		ELEVATION: 2.96 m

SAMPLE TYPE  Grab

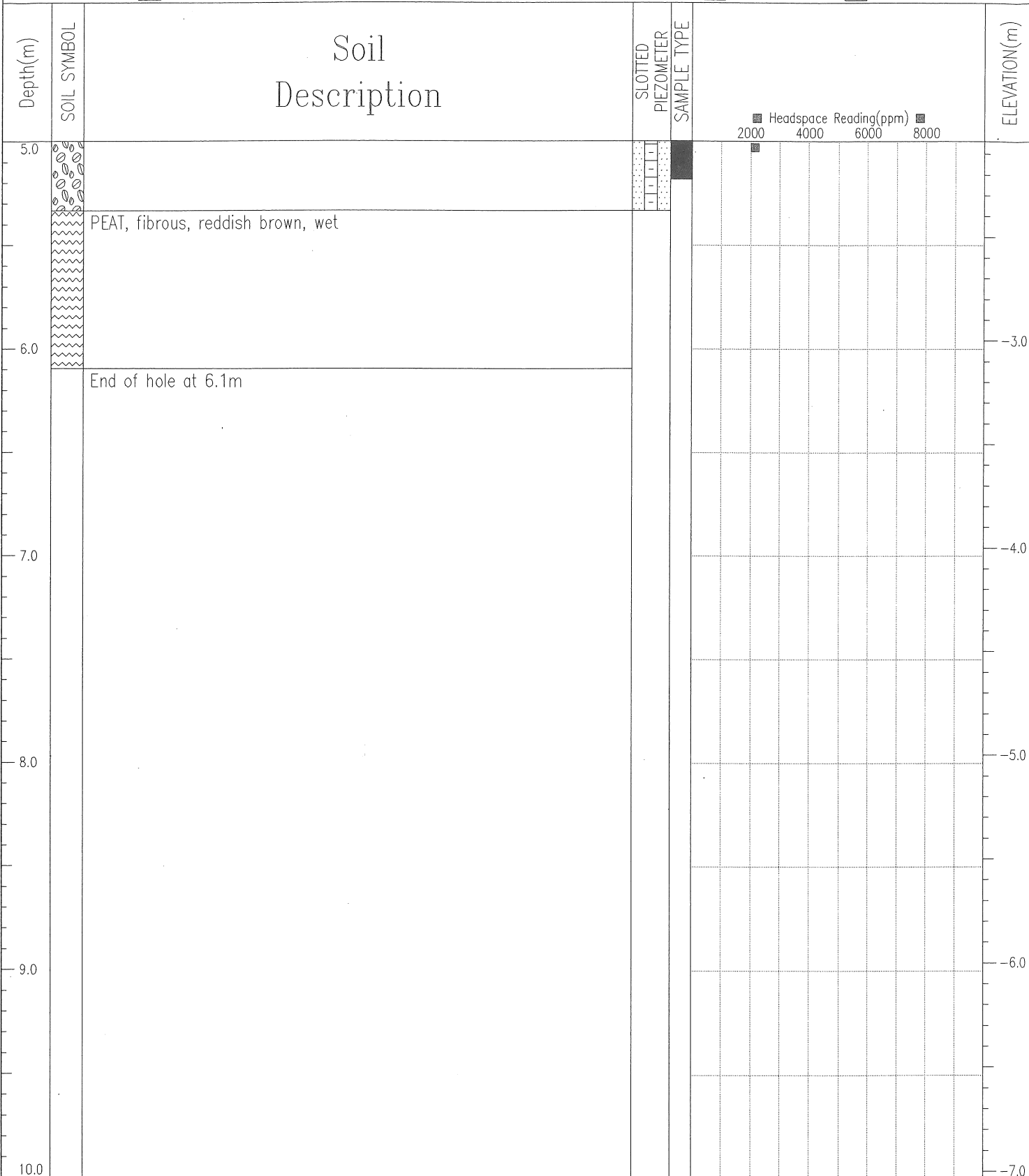
BACKFILL TYPE  BENTONITE  PEA GRAVEL  SLOUGH  GROUT  DRILL CUTTINGS  SAND



<b>EBA ENGINEERING CONSULTANTS LTD.</b> Vancouver, B.C.	LOGGED BY: IN	COMPLETION DEPTH: 6 m
	REVIEWED BY: LS	COMPLETE: 14/08/18

Preliminary Site Investigation	Driller: Uniwide Drilling Co. Ltd.	BOREHOLE NO: EBA04-5
Buckingham Industries Ltd.	Method: Solid Stem / Hollow Stem Auger	PROJECT NO: 5825226.002
Location: 9150 - 9236 River Road, Delta		ELEVATION: 2.96 m

SAMPLE TYPE	<input checked="" type="checkbox"/> Grab
BACKFILL TYPE	<input checked="" type="checkbox"/> BENTONITE <input type="checkbox"/> PEA GRAVEL <input type="checkbox"/> SLOUGH <input type="checkbox"/> GROUT <input type="checkbox"/> DRILL CUTTINGS <input type="checkbox"/> SAND



EBA ENGINEERING CONSULTANTS LTD. Vancouver, B.C.	LOGGED BY: IN	COMPLETION DEPTH: 6 m
	REVIEWED BY: LS	COMPLETE: 14/08/18
		Page 2 of 2