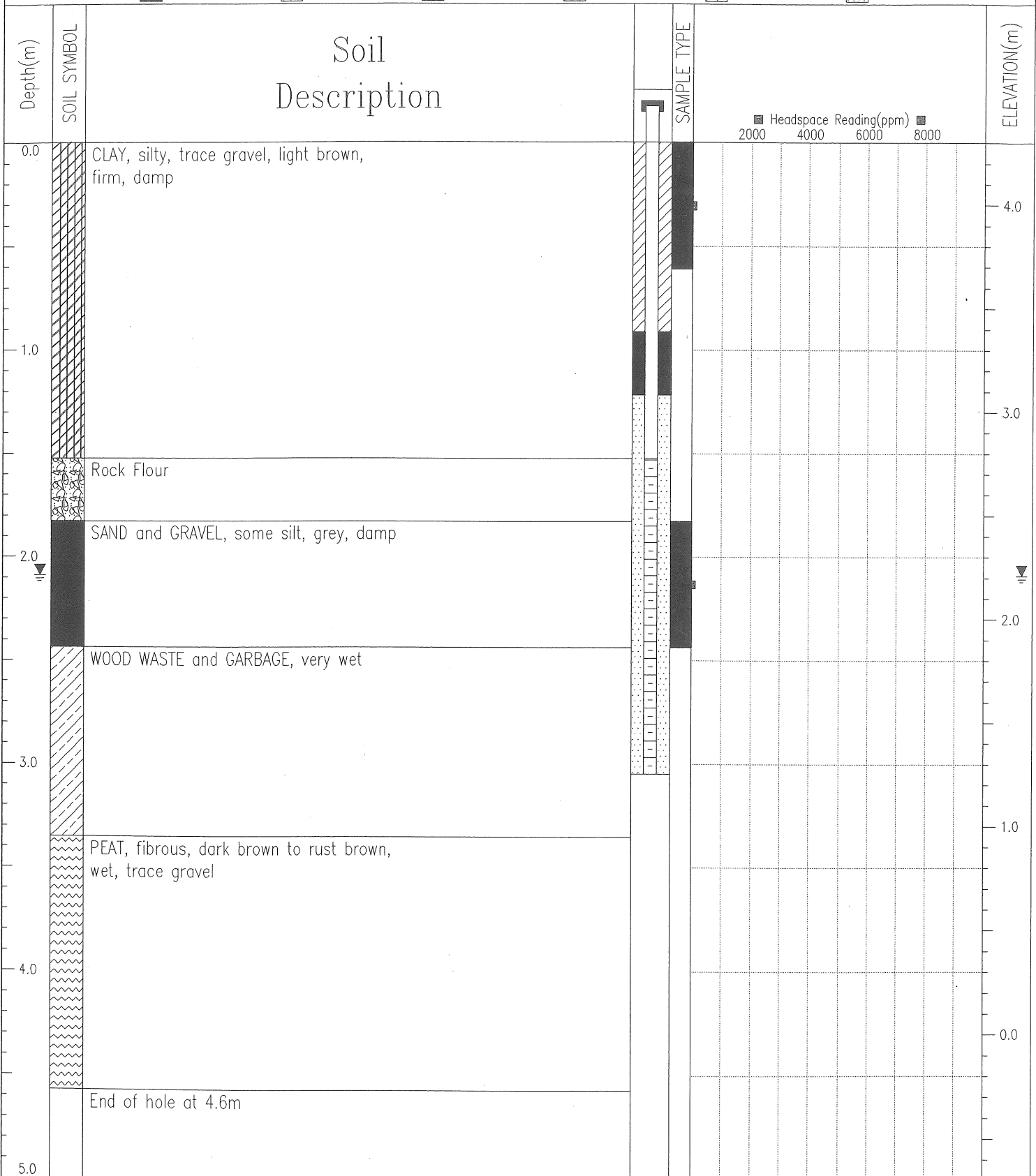


Preliminary Site Investigation	Driller: Uniwide Drilling Co. Ltd.	BOREHOLE NO: EBA04-11
Buckingham Industries Ltd.	Method: Solid Stem / Hollow Stem Auger	PROJECT NO: 5825226.002
Location: 9150 - 9236 River Road, Delta		ELEVATION: 4.3 m

SAMPLE TYPE	Grab
BACKFILL TYPE	BENTONITE



EBA ENGINEERING CONSULTANTS LTD. Vancouver, B.C.	LOGGED BY: IN	COMPLETION DEPTH: 5 m
	REVIEWED BY: LS	COMPLETE: 04/08/24