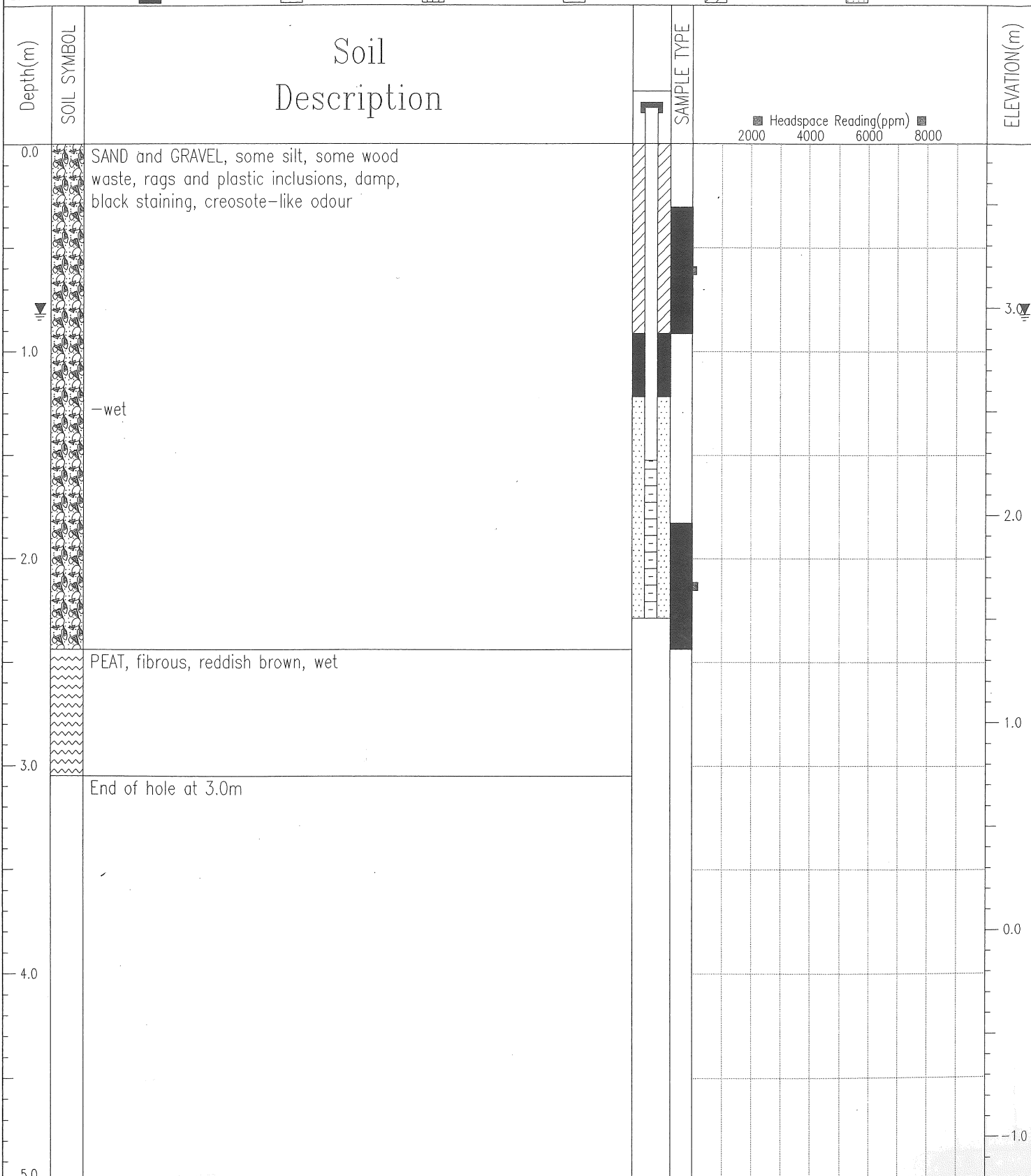


Preliminary Site Investigation	Driller: Uniwide Drilling Co. Ltd.	BOREHOLE NO: EBA04-10
Buckingham Industries Ltd.	Method: Solid Stem / Hollow Stem Auger	PROJECT NO: 5825226.002
Location: 9150 - 9236 River Road, Delta		ELEVATION: 3.79 m

SAMPLE TYPE	Grab
BACKFILL TYPE	BENTONITE PEA GRAVEL SLOUGH GROUT DRILL CUTTINGS SAND



EBA ENGINEERING CONSULTANTS LTD.
Vancouver, B.C.

LOGGED BY: IN
REVIEWED BY: LS

COMPLETION DEPTH: 3 m
COMPLETE: 04/08/24