



Client
Shell Canada Products

Borehole No. : BH16-01

Location
6361 Hammond Bay Road, Nanaimo, BC

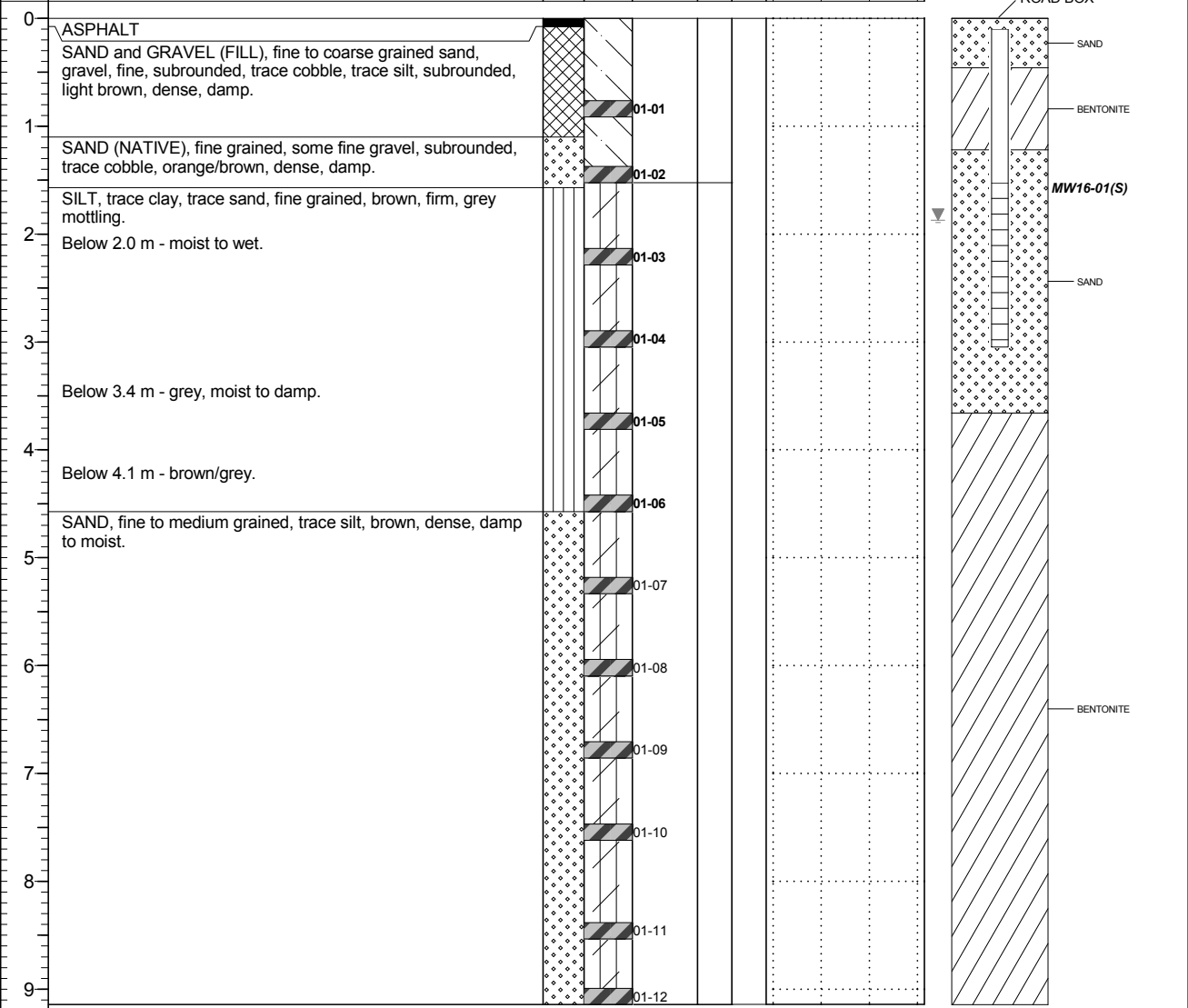
PAGE 1 OF 1

Drilling Contractor: McRae's/Drillwell Enterprises
 Drilling Method: Hydrovac/Solid Stem Auger
 Borehole Dia. (m): 0.15
 Pipe/Slotted Pipe Dia. (m): 0.05/0.05

Date Monitored: 2016 05 19
 Ground Surface Elev. (m): 110.750
 Top of Casing Elev. (m): 110.650
 Northing: 5453956.500
 Easting: 424047.165

Project Number: 511313
 Borehole Logged By: CT
 Date Drilled: 2016 05 09
 Log Typed By: AS

Depth in Metres	Drilling Legend Sample Interval Vac. Extraction Auger Flight	Water/ Levels Water Level 1 Water Level 2 	Stratigraphy Plot	Sample Interval Core Run	Sample Number	Blow Count	% Recovery	<input type="checkbox"/> Reading within indicated scale <input checked="" type="checkbox"/> Reading outside indicated scale	Solid PVC Slotted PVC
	Soil Description							Well Name 1: MW16-01(S)	



Any use which a third party makes of this document, or any reliance on or decisions to be made based on it, are the responsibility of such third parties. CSAP/MOE are not responsible for any use or modification of this document. CSAP/MOE accept no responsibility for damages, if any, suffered by any third party as a result of decisions made or actions taken based on this document.

NOTES
 Bolded sample denotes sample analyzed.