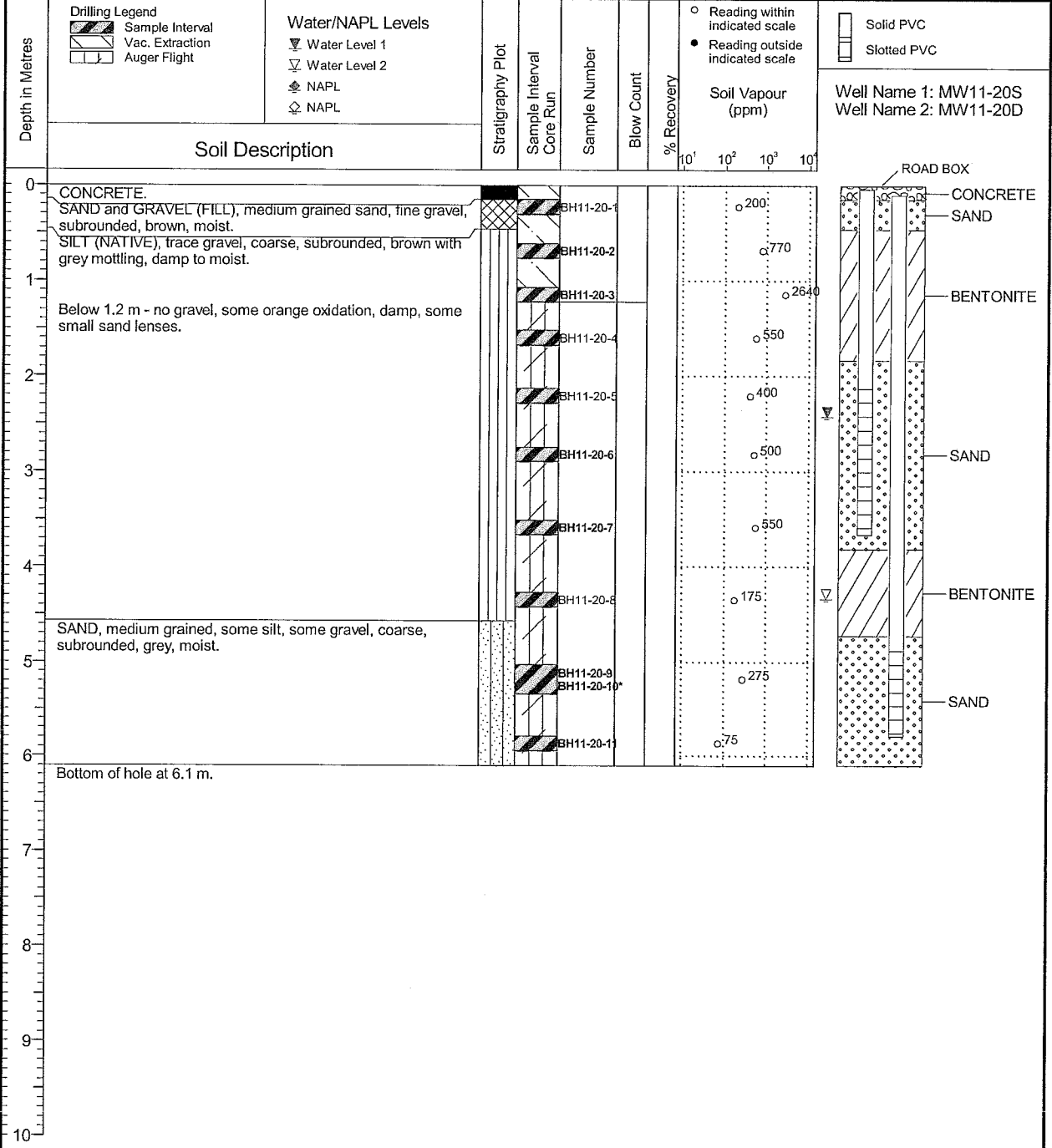


Borehole Log
Site ID: 1938
Submission date: 2015-08-11

RECEIVED
AUG 11 2015
 ENVIRONMENTAL EMERGENCIES AND
 LAND REMEDIATION DIVISION
 VICTORIA

SNC • LAVALIN	Client Shell Canada Products	Borehole No. : 11-20S/D
	Location 4450 Trans Canada Hwy., Cobble Hill, BC	PAGE 1 OF 1

Drilling Contractor: Beck Drilling/Drillwell Drilling Method: Hydrovac/Solid Stem Auger Borehole Dia. (m): 0.15 Pipe/Slotted Pipe Dia. (m): 0.05/0.05	Date Monitored: 2011 10 31 Ground Surface Elev. (m): 73.020 Top of Casing Elev. (m): 72.920 , 72.980 Northing: 5397447.195 Easting: 452975.726	Project Number: 134085 Borehole Logged By: DF/MMJ Date Drilled: 2011 10 18 Log Typed By: MAL
--	--	---



NOTES

Bolded sample denotes sample analyzed.
 *Sample BH11-20-10 is a blind field duplicate of BH11-20-9.
 Borehole day-lighted to a depth of 1.2 m on 2011 10 17.
 MW11-20S pipe diameter - 0.03 m.

Print Date: 2015.03.06 Date Approved: 2015.03.06