



Client  
Shell Canada Products

Borehole No. : 12-75

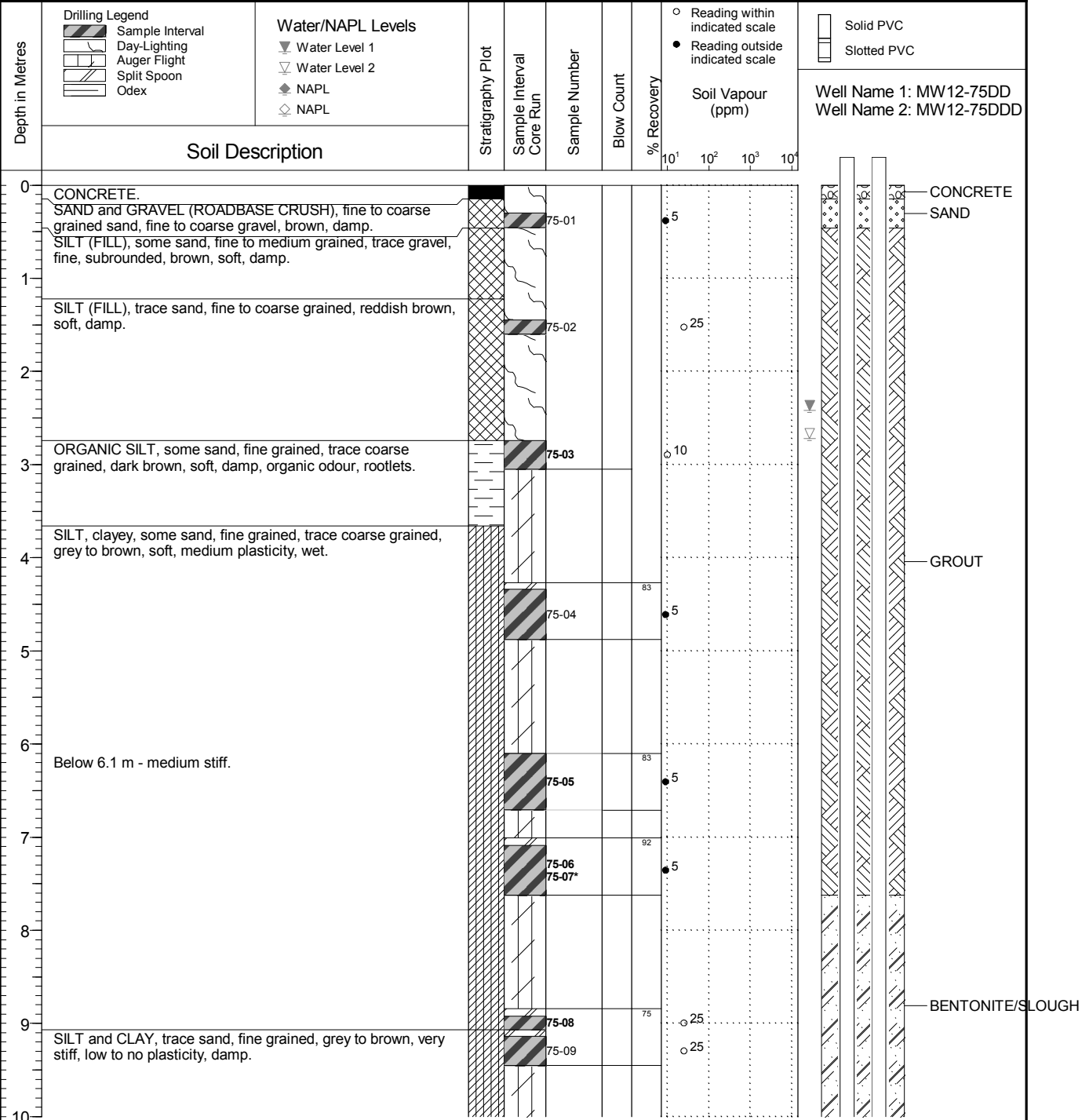
Location  
465 Highway 97, 100 Mile House, BC

PAGE 1 OF 2

Drilling Contractor Spruce City/Geotech Drilling  
Drilling Method Hydrovac/Air Rotary  
Borehole Dia. (m) 0.08  
Pipe/Slotted Pipe Dia. (m) 0.05/0.05

Date Monitored 2012 02 15  
Ground Surface Elev. (m) 930.481  
Top of Casing Elev. (m) 931.480 , 931.514  
Northing: 379.827 Easting: 1230.025

Project Number: 132814  
Borehole Logged By: JM  
Date Drilled: 2012 02 02  
Log Typed By: NN



**NOTES**  
 Bolded sample denotes sample analyzed.  
 \*Sample 75-07 is a blind field duplicate of sample 75-06.  
 Sample 75-11 is a grab sample from air rotary cuttings.  
 Borehole day-lighted to a depth of 3.1 m on February 1, 2012.  
 MW12-75DD is a 0.02 m diameter pipe.

Print Date: 2015.12.17 QA1: JM Date Approved: 2015.04.27

Any use which a third party makes of this document, or any reliance on or decisions to be made based on it, are the responsibility of such third parties. CSAP/MOE are not responsible for any use or modification of this document. CSAP/MOE accept no responsibility for damages, if any, suffered by any third party as a result of decisions made or actions taken based on this document.



Client  
Shell Canada Products

Borehole No. : 12-75

Location  
465 Highway 97, 100 Mile House, BC

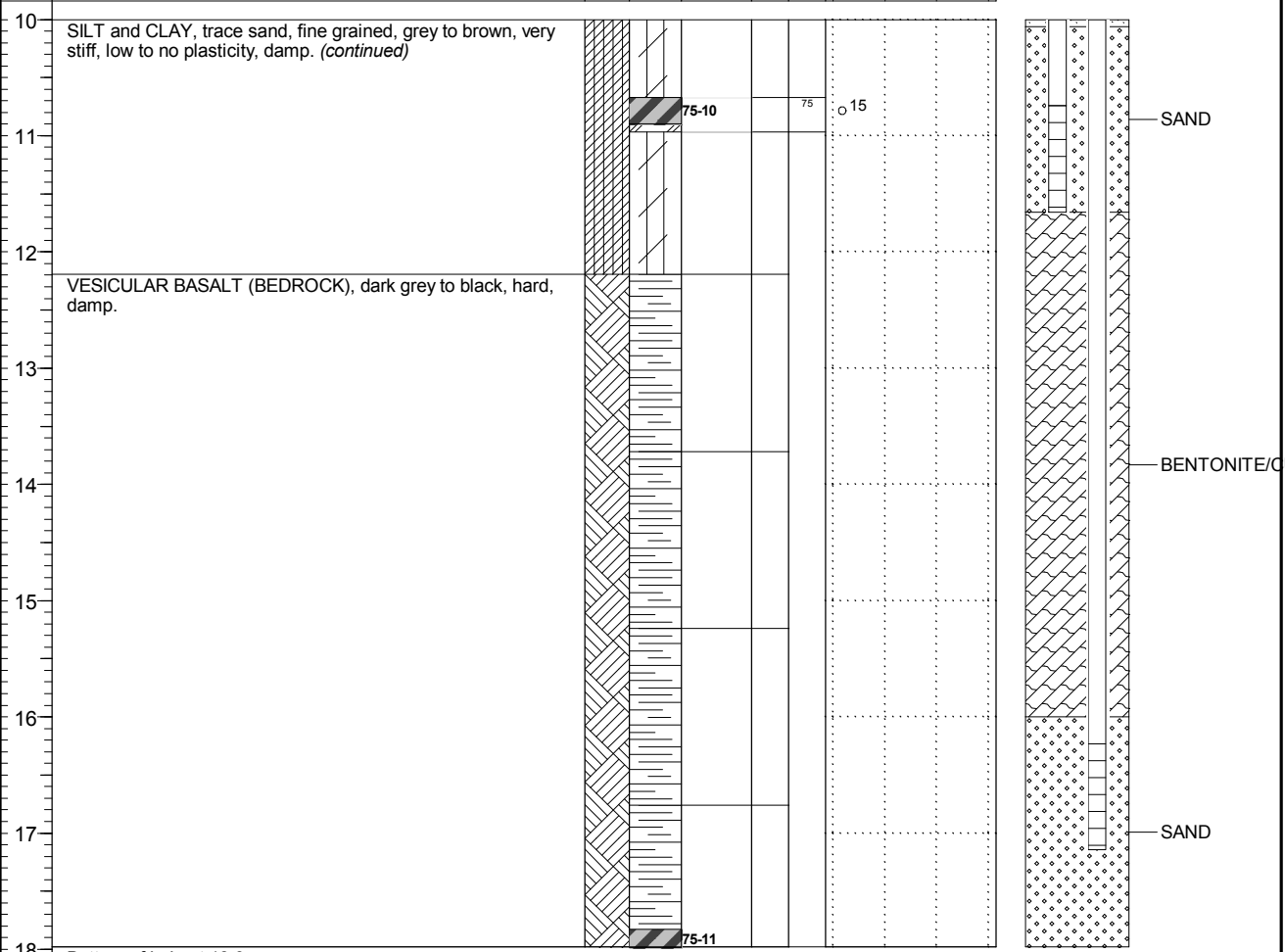
PAGE 2 OF 2

Drilling Contractor Spruce City/Geotech Drilling  
Drilling Method Hydrovac/Air Rotary  
Borehole Dia. (m) 0.08  
Pipe/Slotted Pipe Dia. (m) 0.05/0.05

Date Monitored 2012 02 15  
Ground Surface Elev. (m) 930.481  
Top of Casing Elev. (m) 931.480 , 931.514  
Northing: 379.827 Easting: 1230.025

Project Number: 132814  
Borehole Logged By: JM  
Date Drilled: 2012 02 02  
Log Typed By: NN

Depth in Metres	<b>Drilling Legend</b> Sample Interval Day-Lighting Auger Flight Split Spoon Odex	<b>Water/NAPL Levels</b> Water Level 1 Water Level 2 NAPL NAPL	Stratigraphy Plot	Sample Interval Core Run	Sample Number	Blow Count	% Recovery	○ Reading within indicated scale ● Reading outside indicated scale	Solid PVC Slotted PVC
	Soil Description							Soil Vapour (ppm)	Well Name 1: MW12-75DD Well Name 2: MW12-75DDD



Bottom of hole at 18.0 m.

**NOTES**  
 Bolded sample denotes sample analyzed.  
 \*Sample 75-07 is a blind field duplicate of sample 75-06.  
 Sample 75-11 is a grab sample from air rotary cuttings.  
 Borehole day-lighted to a depth of 3.1 m on February 1, 2012.  
 MW12-75DD is a 0.02 m diameter pipe.

Print Date: 2015.12.17 QA1: JM Date Approved: 2015.04.27

Any use which a third party makes of this document, or any reliance on or decisions to be made based on it, are the responsibility of such third parties. CSAP/MOE are not responsible for any use or modification of this document. CSAP/MOE accept no responsibility for damages, if any, suffered by any third party as a result of decisions made or actions taken based on this document.