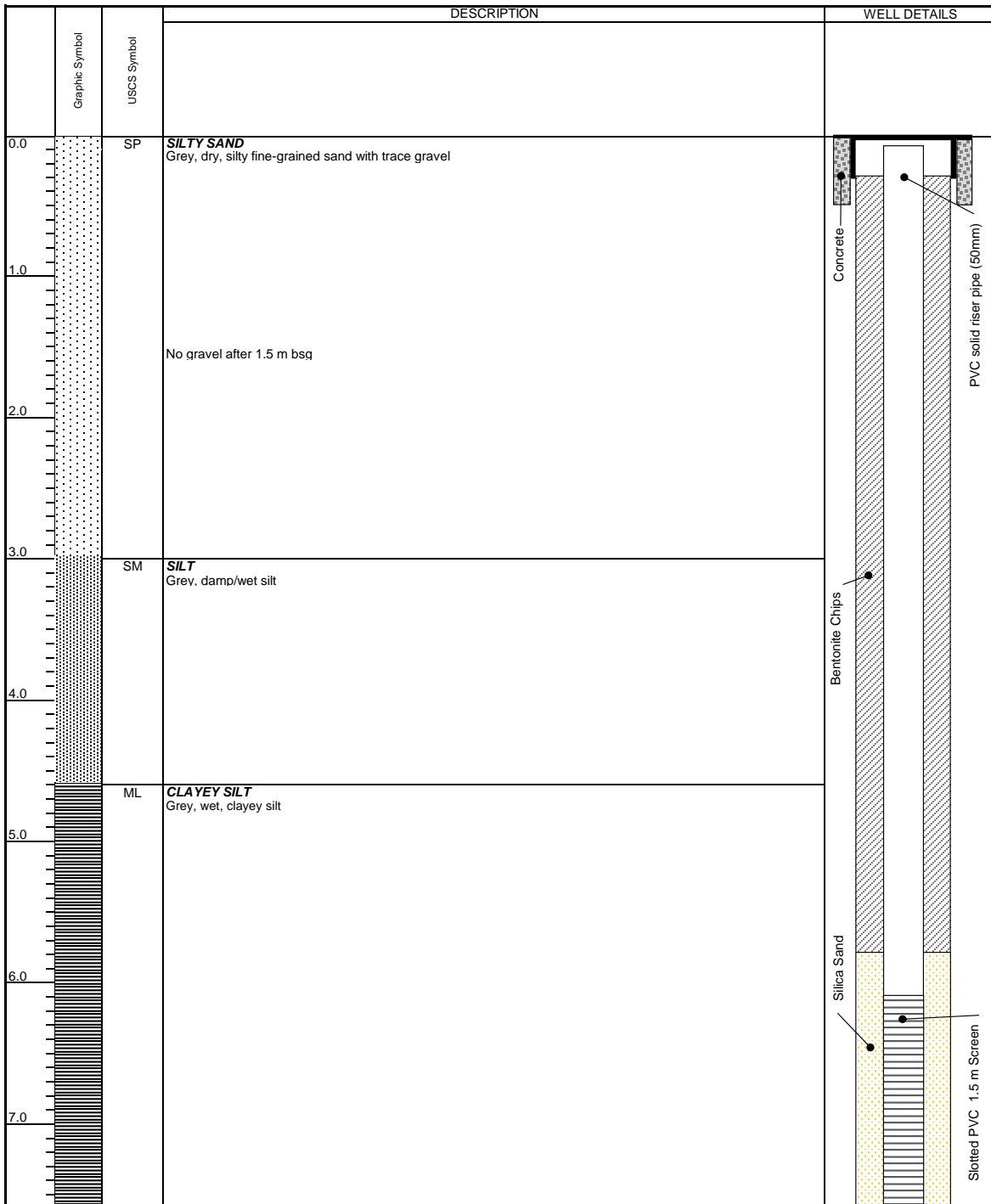




# REPRESENTATIVE BOREHOLE LOG

<b>BOREHOLE NAME</b>	BH15-1/MW15-1	<b>WATER LEVEL BELOW TOC (M)</b>	2.5300
<b>BOREHOLE ADDRESS</b>	527 Carnarvon Street	<b>WATER LEVEL BELOW SURFACE (M)</b>	2.6000
<b>BOREHOLE MUNICIPALITY</b>	New Westminster	<b>TOTAL BOREHOLE DEPTH (M)</b>	7.62
<b>BOREHOLE SITE ID</b>	18474	<b>BOREHOLE TOC ELEVATION (M ASL)</b>	23.0300
<b>LATITUDE</b>	N 49° 12' 15.45"	<b>BOREHOLE SURFACE ELEVATION (M ASL)</b>	23.1000
<b>LONGITUDE</b>	W 122° 54' 31.83"	<b>TOP OF SCREEN (M BGS)</b>	5.10
<b>BOREHOLE LOCATION</b>	Southwest portion of the Site	<b>BOTTOM OF SCREEN (M MGS)</b>	7.60
<b>FILE NAME</b>	S110.201_Representative_BH_Log		
<b>DATE DRILLED</b>	April 17, 2015		
<b>DRILL METHOD</b>	Trackmount Auger Rig		
<b>BOREHOLE DIAMETER</b>	150 mm	<b>HYDRAULIC CONDUCTIVITY (M/S)</b>	4.15E-07



End of Borehole at 7.62 m bsg

Any use which a third party makes of this document, or any reliance on or decisions to be made based on it, are the responsibility of such third parties. CSAP/MOE are not responsible for any use or modification of this document. CSAP/MOE accept no responsibility for damages, if any, suffered by any third party as a result of decisions made or actions taken based on this document.