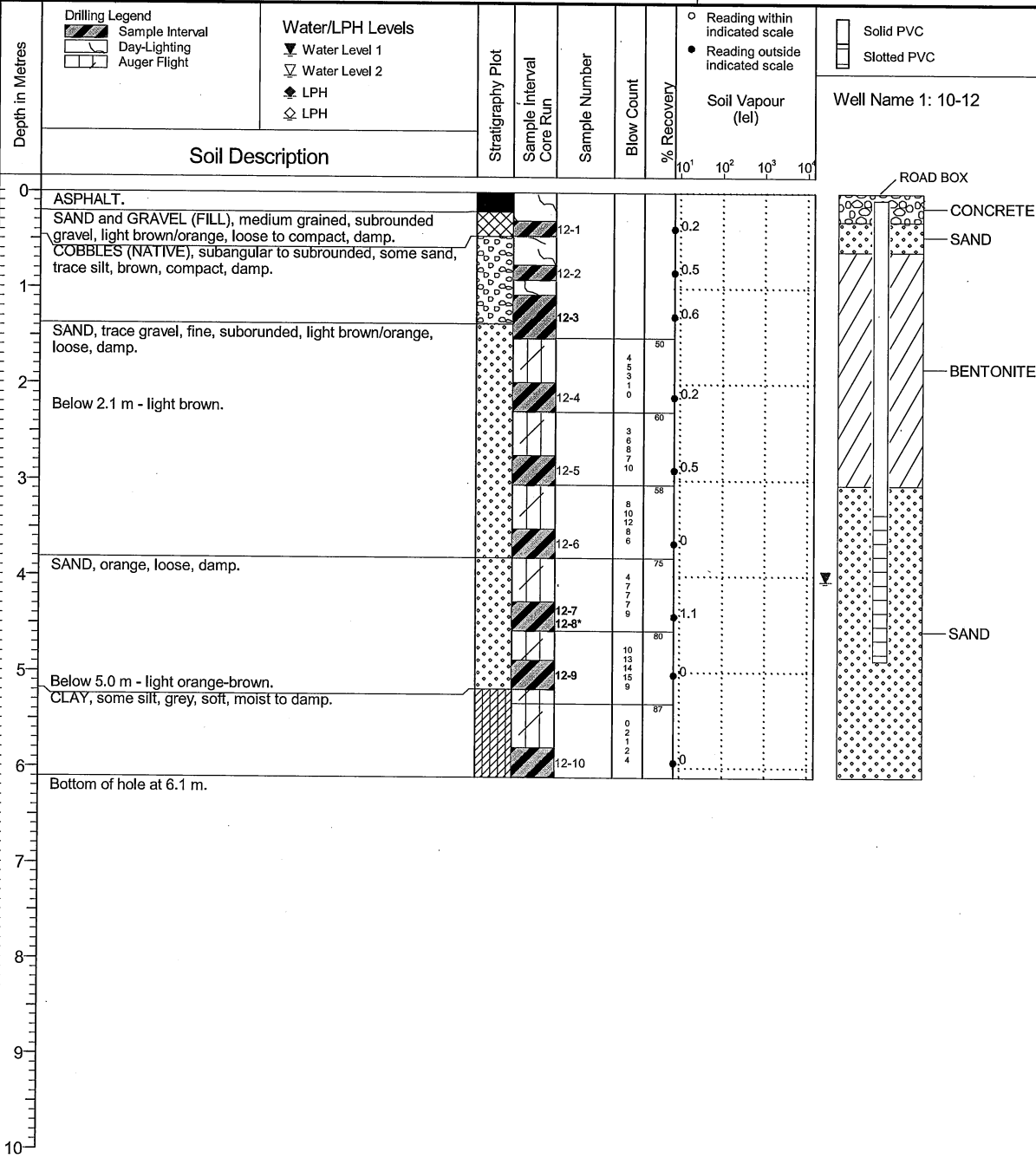


Drilling Contractor McRae's Environmental/Drillwel..
 Drilling Method Hydrovac/Hollow Stem Auger
 Borehole Dia. (m) 0.20
 Pipe/Slotted Pipe Dia. (m) 0.05/0.05

Date Monitored 2010 12 15
 Ground Surface Elev. (m) 7.974
 Top of Casing Elev. (m) 7.901
 Northing: 5448655.129 Easting: 431584.321

Project Number: 132131
 Borehole Logged By: DF
 Date Drilled: 2010 12 01
 Log Typed By: MAL



NOTES
 Bolded sample denotes sample analyzed.
 *Sample 12-8 is a blind field duplicate of 12-7.
 Borehole day-lighted to a depth of 10.12 m on 2010 12 01.

Print Date: 2015.11.19 QA1: CMT Date Approved: 2011.01.05

Any use which a person makes of this data, or any reliance on or decisions to be made based on it, are the sole responsibility of such person. Imperial Oil/SNC-Lavalin Inc./CSAP/MOE are not responsible for any use or modification of this data. Imperial Oil/SNC-Lavalin Inc./CSAP/MOE accept no responsibility for losses or damages, if any, suffered by any person as a result of decisions made or actions taken based on this data