



Client  
Shell Canada Products

Borehole No. : BH14-27D

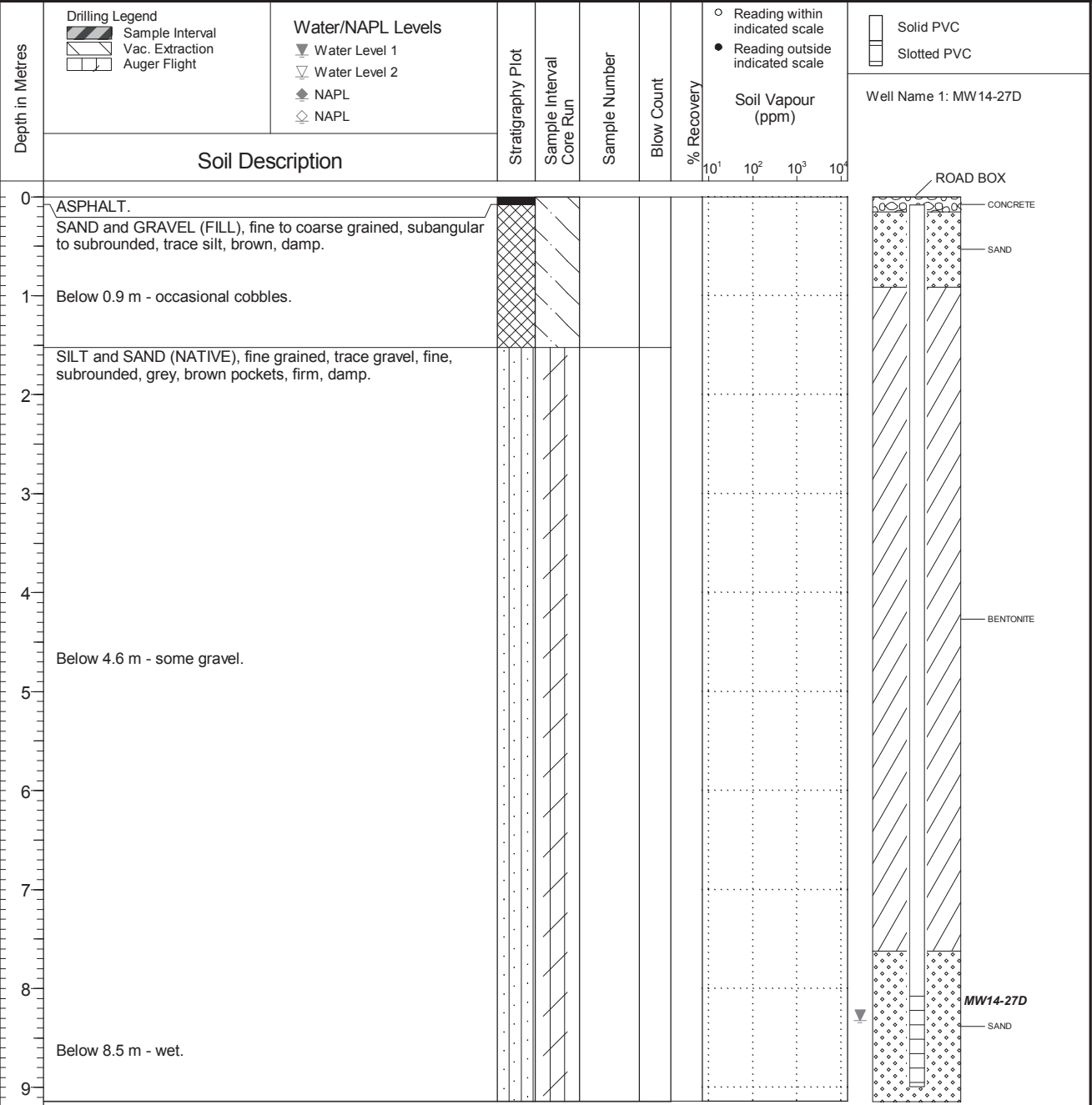
Location  
4727 Rutherford Rd., Nanaimo, BC

PAGE 1 OF 1

Drilling Contractor: McRae's/Drillwell  
 Drilling Method: Hydrovac/Hollow Stem Auger  
 Borehole Dia. (m): 0.20  
 Pipe/Slotted Pipe Dia. (m): 0.05/0.05

Date Monitored: 2014 06 09  
 Ground Surface Elev. (m): 120.495  
 Top of Casing Elev. (m): 120.410  
 Northing: 5453837.126  
 Easting: 425283.106

Project Number: 134052  
 Borehole Logged By: CMT/BH  
 Date Drilled: 2014 06 06  
 Log Typed By: NDS



Any use which a third party makes of this document, or any reliance on or decisions to be made based on it, are the responsibility of such third parties. CSAP/MOE are not responsible for any use or modification of this document. CSAP/MOE accept no responsibility for damages, if any, suffered by any third party as a result of decisions made or actions taken based on this document.

**NOTES**

Borehole day-lighted to a depth of 1.5 m on 2014 06 02.

QA DAF 2014 07 08 AD 2016 04 12 Print Date: 2016-04-15