



Client :  
Shell Canada Products

Borehole No. : BH13-107

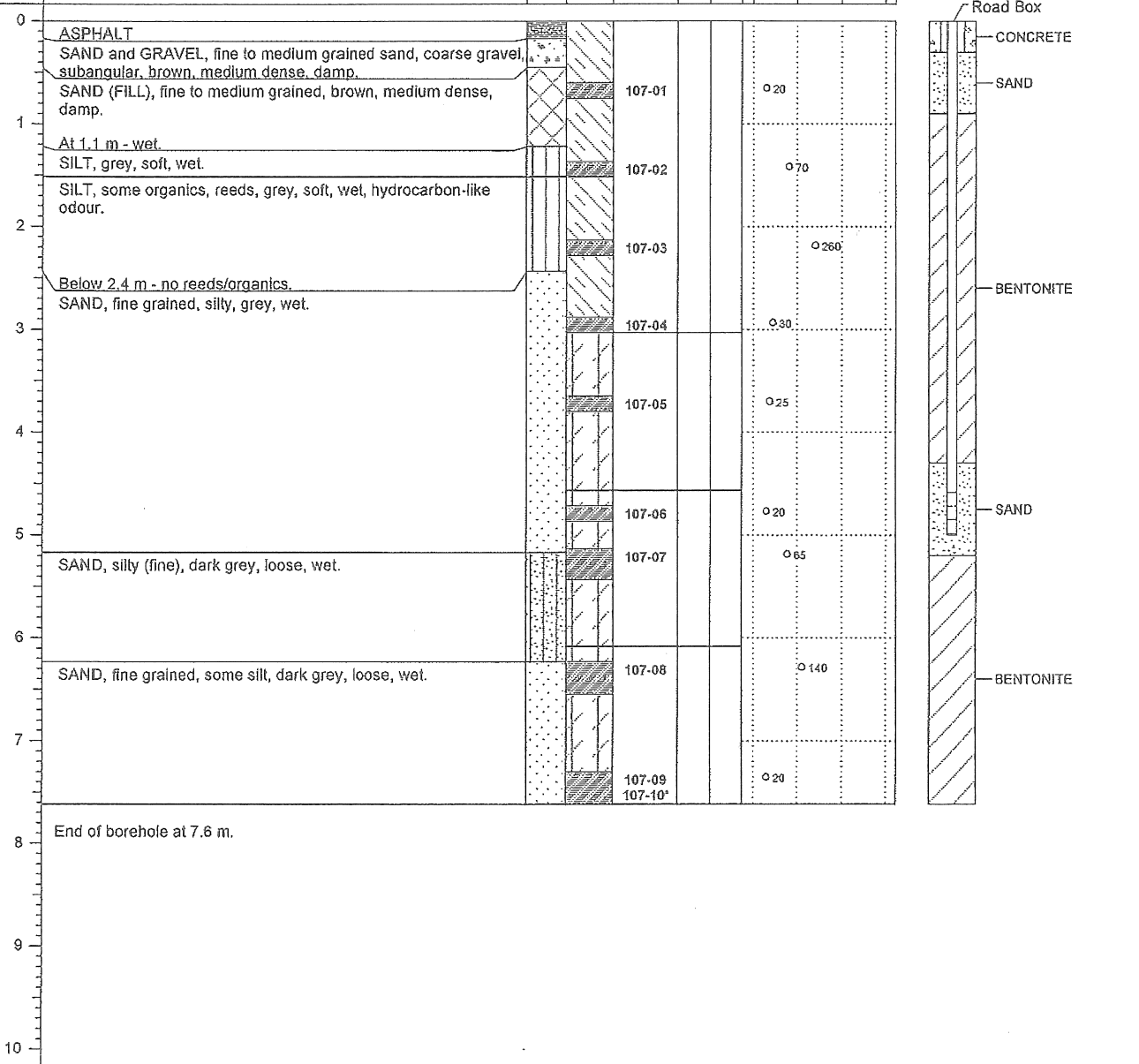
Location :  
City Lands (No.3 Rd and Granville), Richmond, BC

(Page 1 of 1)

Drilling Contractor: McRae's/Uniwide  
Drilling Method : Hydrovac/Solid Stem Auger  
Borehole Dia. (m) : 0.15  
Pipe/Slotted Pipe Dia. (m): 0.05, 0.05

Project Number :130932  
Borehole Logged By :PRJ  
Date Drilled :2013 03 12  
Log Typed By :AS

Depth in Metres	<b>Drilling Legend</b>	<b>Water/NAPL Levels</b>	Stratigraphy Plot	Sample Interval/ Core Run	Sample Number	Blow Count	% Recovery	Soil Vapour (ppm)	○ Reading within indicated scale ● Reading outside indicated scale	▬ Solid PVC ▬ Slotted PVC
	▨ Sample Interval ▩ Auger Flight ▧ Vac. Extraction	≡ Water Level 1 ≡ Water Level 2 ≡ NAPL ≡ NAPL								



Print Date: 2013 10 07, Date Approved: 2013 09 10

**Notes:**  
 Bolded sample denotes sample analyzed.  
 \* Sample 107-10 is a blind field duplicate of 107-09.